

UTA Moves 2050 – Long Range Transit Plan (LRTP)



June 2023

UTA Moves 2050 Long Range Transit Plan

Board of Trustees Presentation

Russ Fox, Director of Planning
Alex Beim, Manager of Long Range and Strategic Planning
Megan Waters, Director of Community Engagement



Agenda Item 9.a.

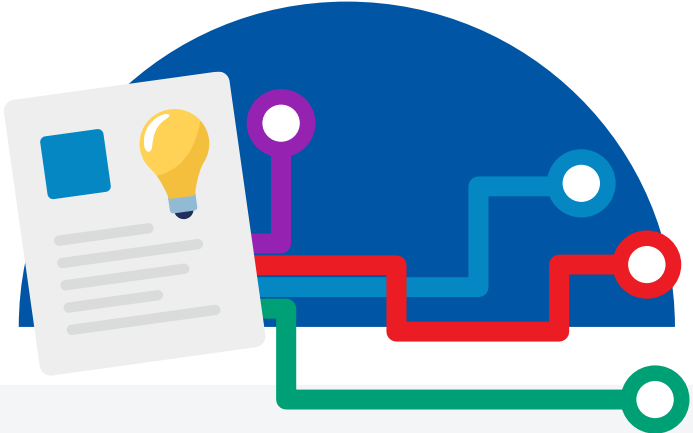


What is the UTA Long Range Transit Plan – UTA Moves 2050?



Responding to Needs

UTA is developing a 30-year Long Range Transit Plan focused on understanding and planning for the **future needs of the communities we serve**

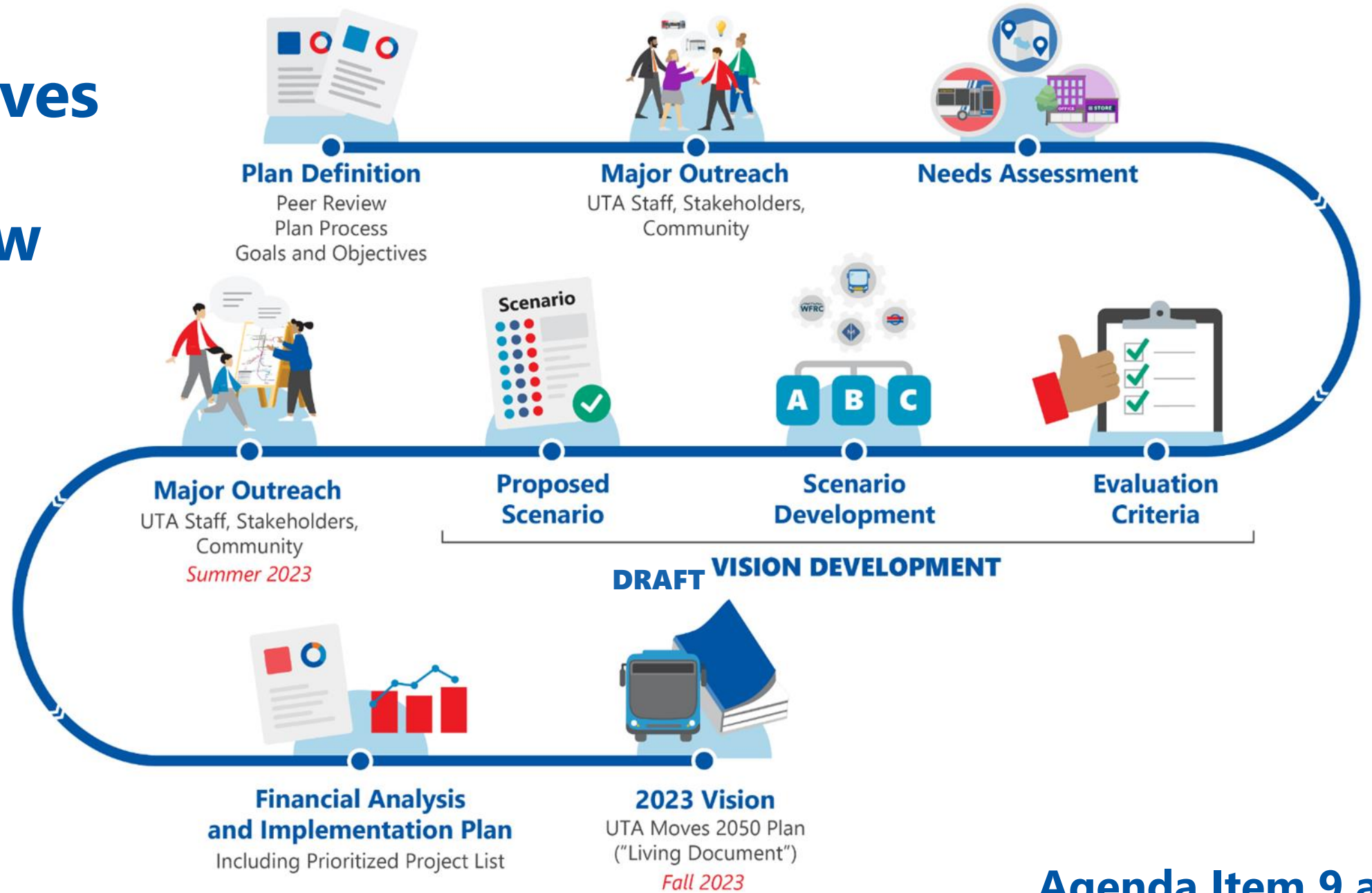


Thinking Big

It will result in a vision for the future of public transportation—**considering all ideas, not restricted by funding**

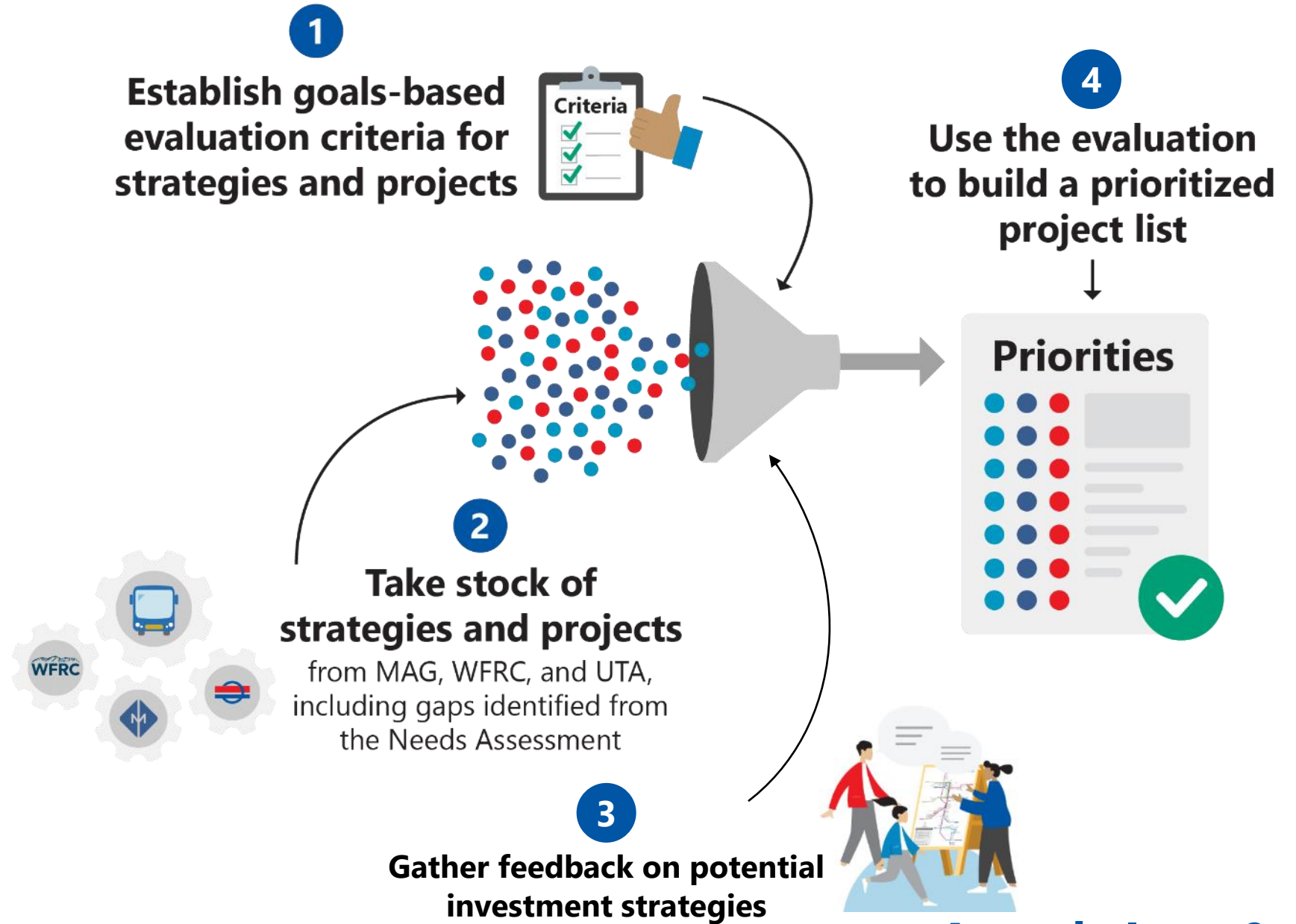
Agenda Item 9.a.

UTA Moves 2050: Overview



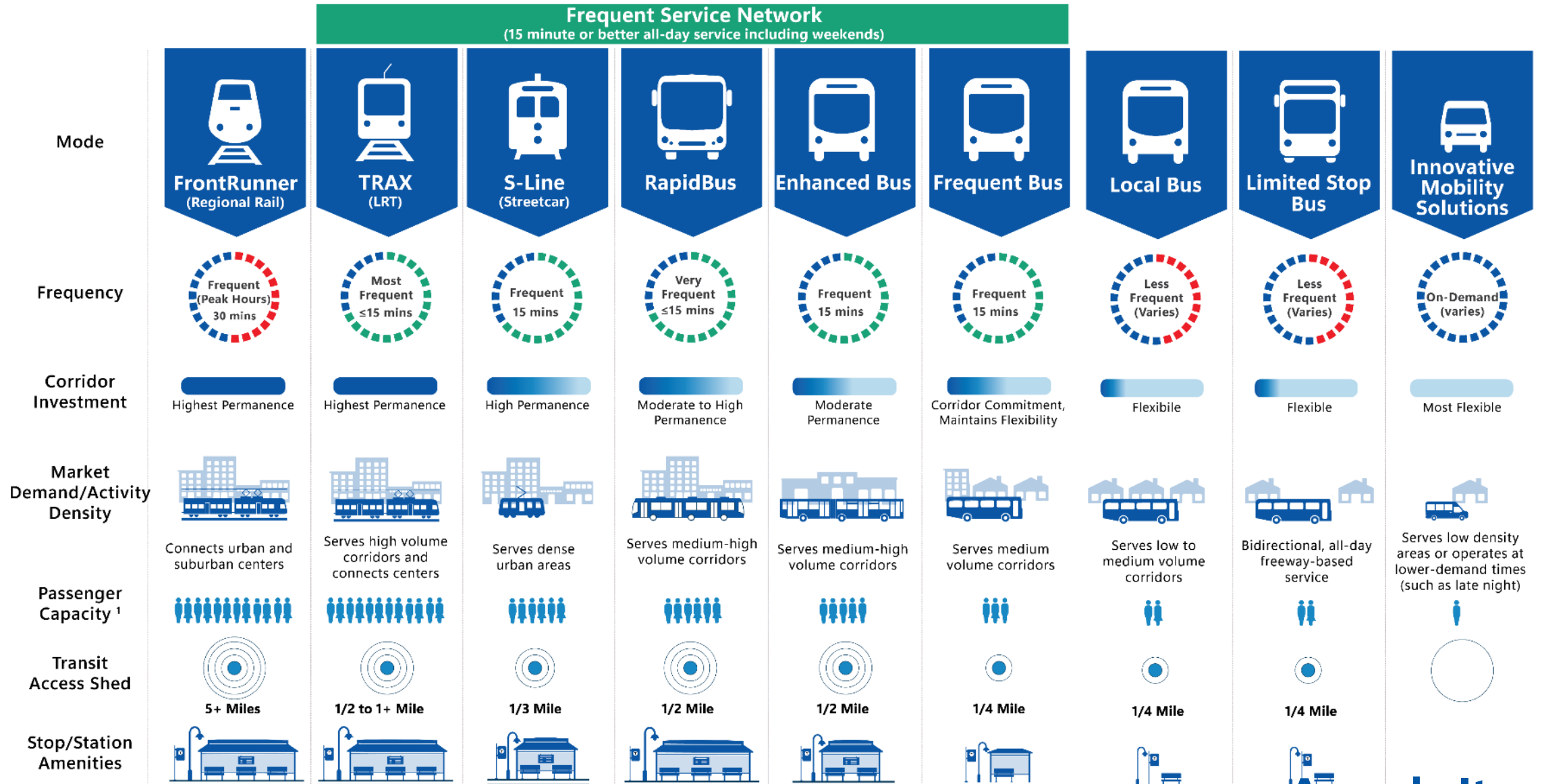
Agenda Item 9.a.

Plan Vision Development



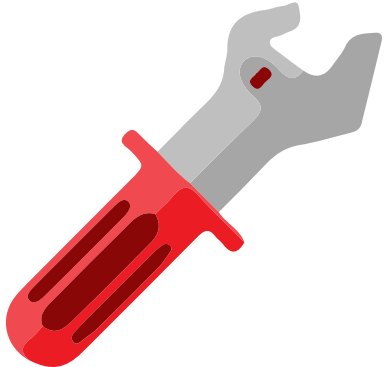
Agenda Item 9.a.

Coordinate Investment Strategy to Growth

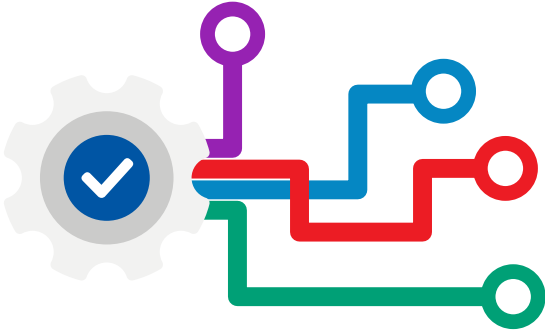


1. Based on vehicle capacity and frequency

Four Investment Strategies



**Maintain
Our System**



**System
Enhancements**

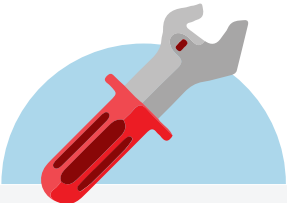


**Expand Frequent
Service Network**

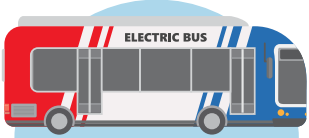


**Serve
Growth Areas**

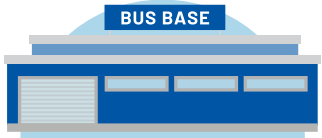
Maintain Our System



State of good repair



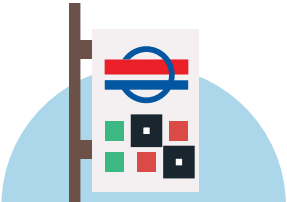
Updating bus fleet to go green



Facilities and support systems



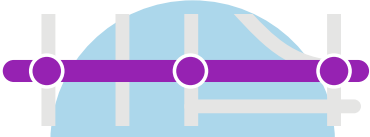
Park and rides



Transit Centers / transfer / layover locations



IT



Corridor preservation



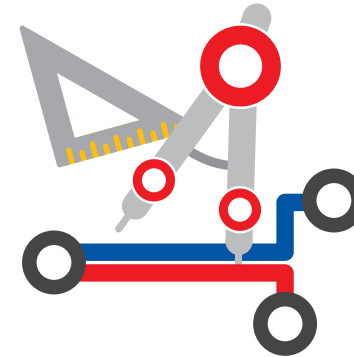
Workforce

Agenda Item 9.a.

System Enhancements



Fast and reliable service is important to existing customers and attracting new customers



Targeted capital improvements to improve on all types of service



Commit to improving technologies for paratransit and On Demand



New technologies

Agenda Item 9.a.

Expand Frequent Service Network

- Improve and expand frequency across system including:
 - Consistency across Frequent Service Network
 - Frontrunner
 - TRAX
 - Bus, including corridor improvements
 - Right of way preservation for potential future extensions



Agenda Item 9.a.

System Enhancements/ Serve Growth Areas

- Operate most routes on weekends, including Sunday
- Extend evening service
- Upgrade existing route frequency
- New routes in select areas
- Innovative Mobility Solution Zones service to provide temporal and geographic coverage
- Develop limited stop bi-directional all-day service to improve regional connectivity



Agenda Item 9.a.

Evaluation Goals Tied to UTA Strategic Plan Goals



Moving Utahns to a Better Quality of Life

- Air quality
- Access to transit



Exceeding Customer Expectations

- Ridership
- Increased frequency & span
- Travel time improvements



Achieving Organizational Excellence

- Cost-Effectiveness



Building Community Support

- Access to communities with high need

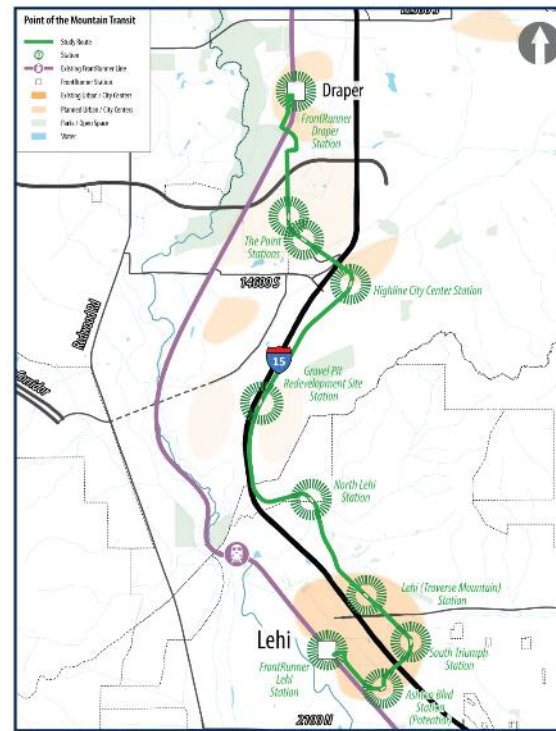


Generating Critical Economic Return

- Serving future transit-supportive land use
- Improved access to jobs & essential services

Regional Planning Processes Concurrent with UTA Moves 2050

- Point of the Mountain
- LCC EIS
- Seasonal service (ski bus)



Agenda Item 9.a.

UTA Moves 2050 Next Steps



Agenda Item 9.a.

UTA Moves 2050 Engagement Strategies

- Informed by community and stakeholders
- Story Map of plan background and Draft Vision
- Upcoming outreach strategies:
 - Interactive map allowing for comment
 - Public meetings
 - Social media outreach
 - Working with partners



Agenda Item 9.a.

Questions & Discussion



<https://rideUTA.com/LRTP>

LRTP@rideuta.com

Agenda Item 9.a.