

Sandy City and South Jordan City Small Area Transit Study

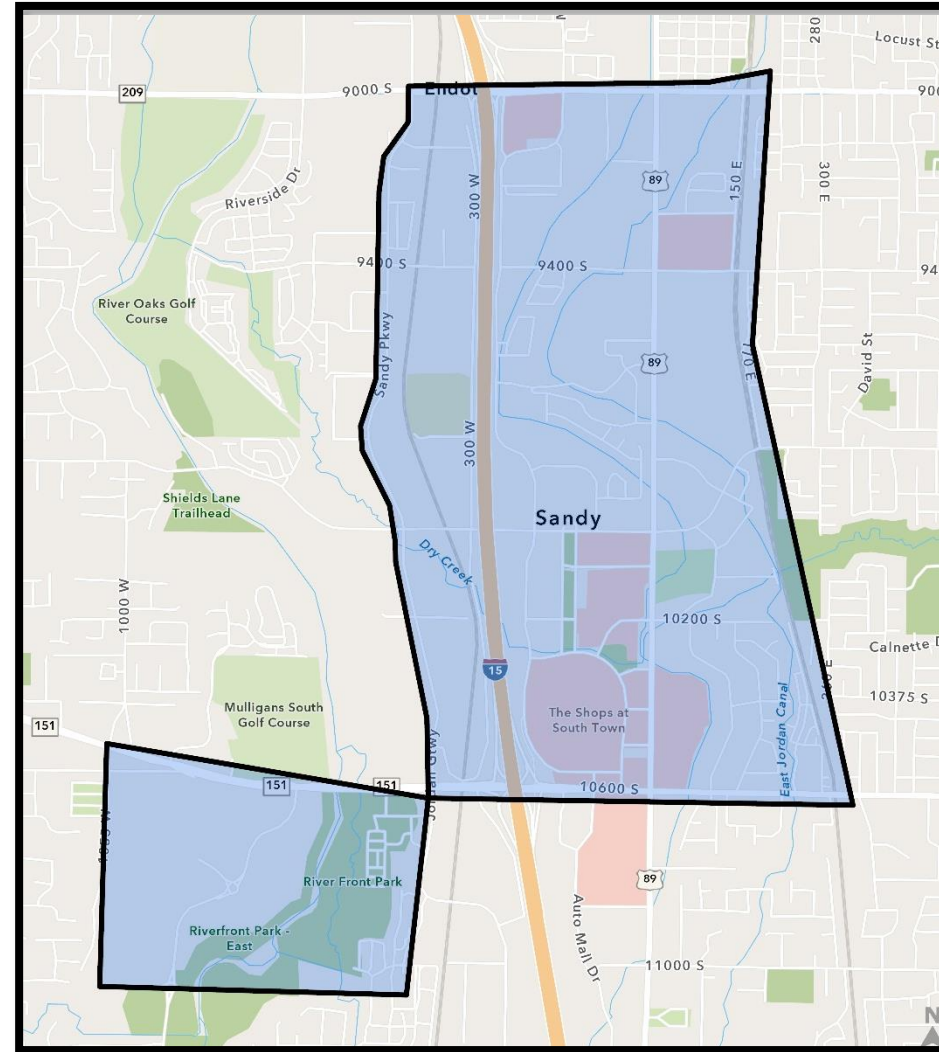


Study Purpose

- Revisit previous Sandy/South Jordan Circulator Study recommendations
- Develop new recommendations for short-term transit service in the study area
- Establish long-term vision for service and identify an incremental path forward.
- Involves Sandy, South Jordan, UDOT, WFRC, South Valley Chamber



Study Area



Scope of Work

- Scope of Work, in brief:
- Review of existing plans
- Review of existing data and future projections
- Create a “Transit Report Card”
- Public outreach
- Develop recommendations

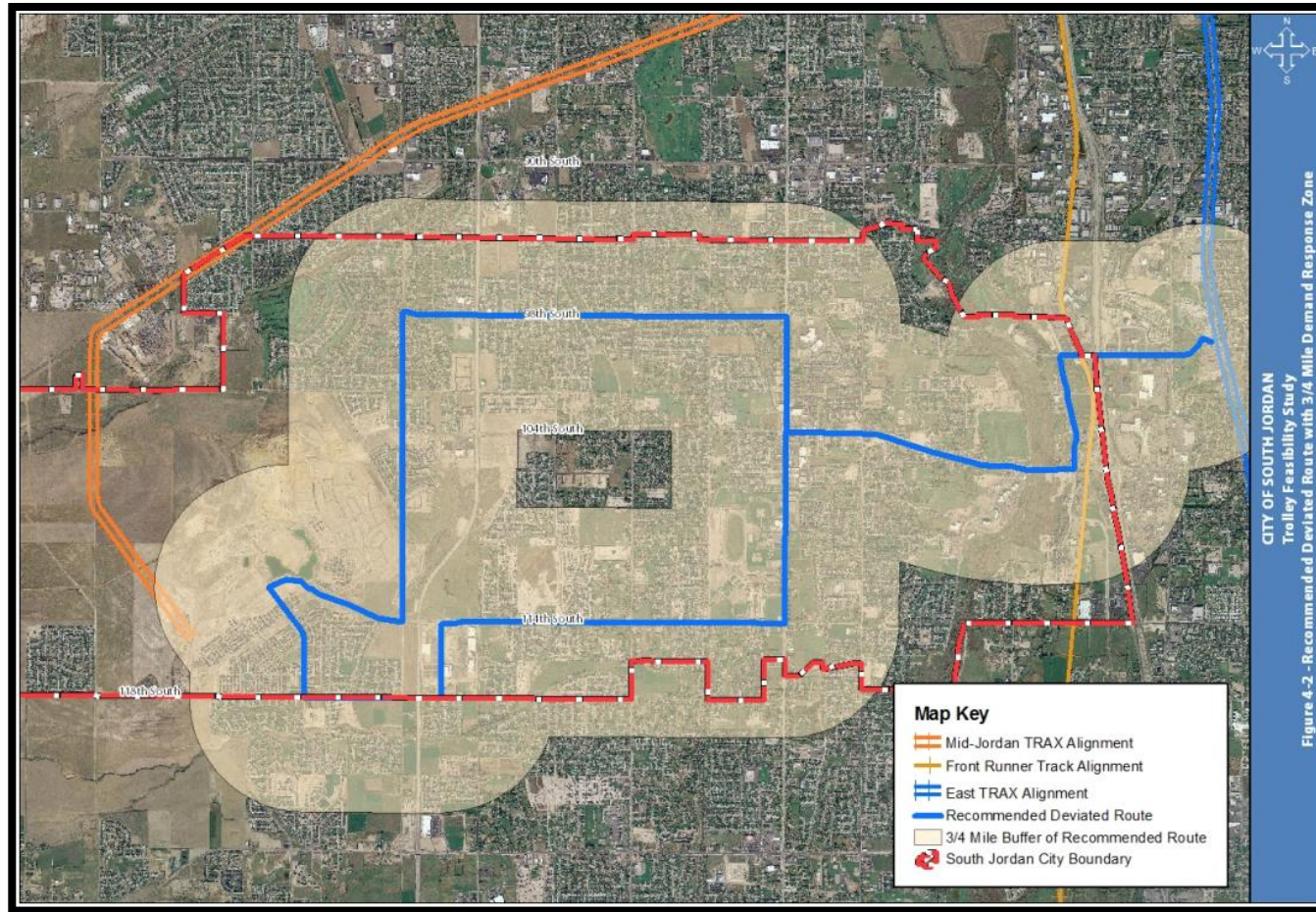
Timeline

- April - Kickoff
- June/July – identify needs and brainstorm solutions
- August/September – Present and gather feedback on draft recommendations
- October – Present Final recommendations



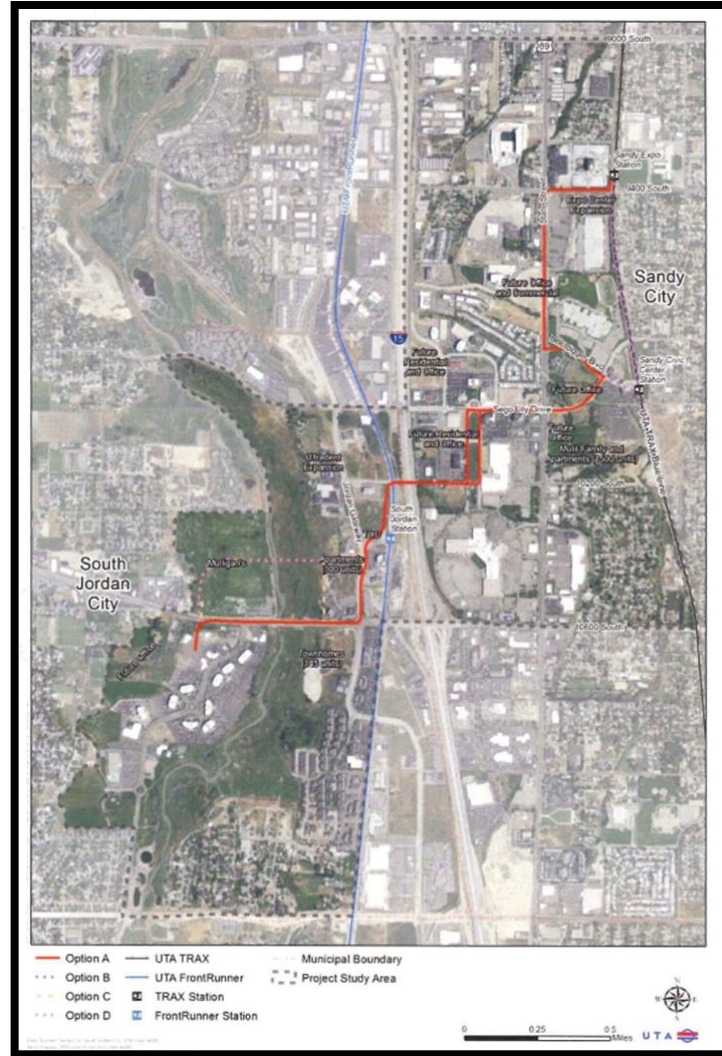
Background Information

2009 South Jordan Trolley Feasibility Study



Background Information

2015 Sandy-South Jordan Circulator Study



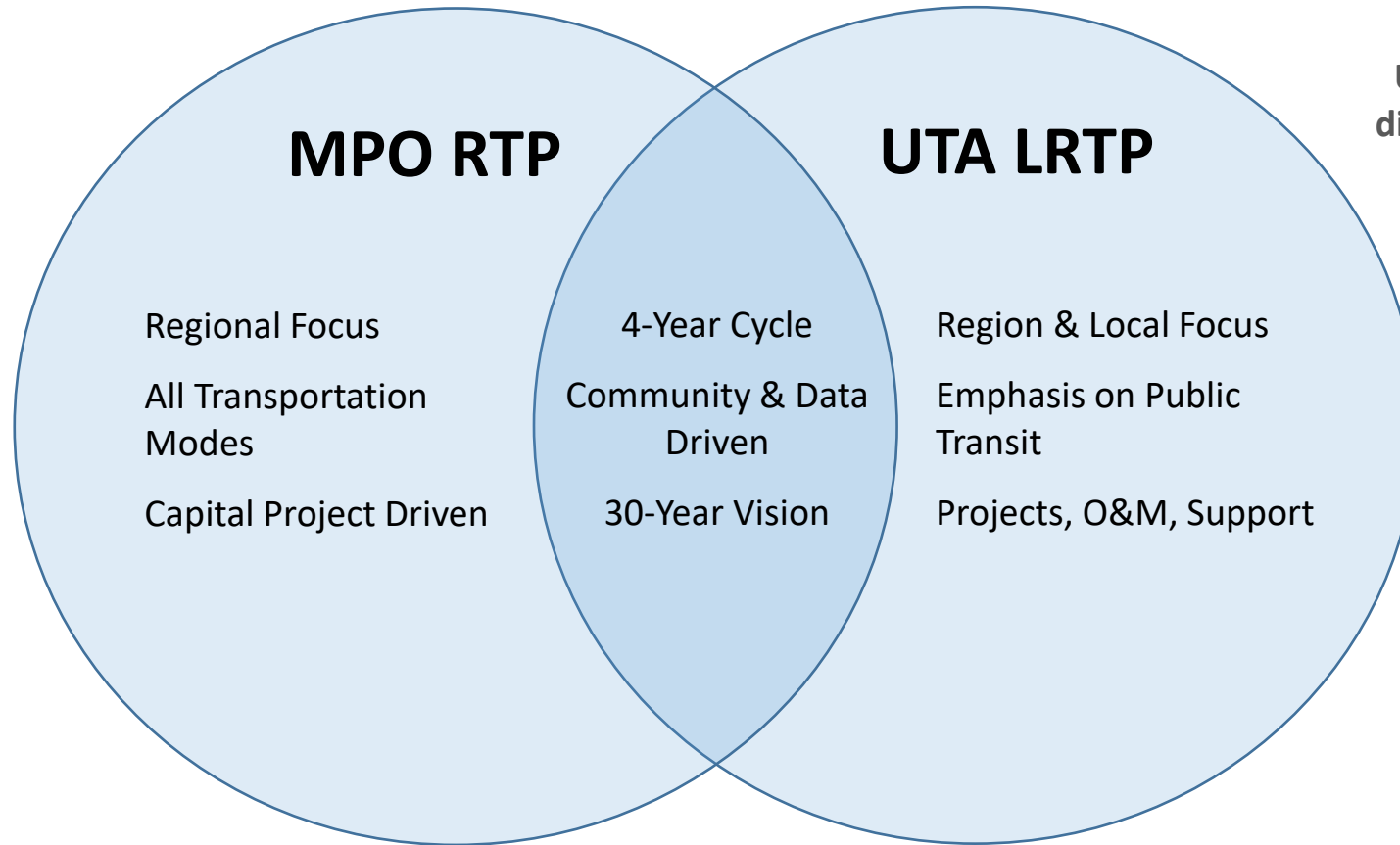
What does UTA do with the study?

UTA Planning Process



What does UTA do with the study?

The Long-Range Transit Plan and Regional Transportation Plan



UTA's LRTP is complementary to, but different from the MPO's RTP planning processes.



Questions and Feedback

