

UTA Bus Speed and Reliability Program (BSRP)



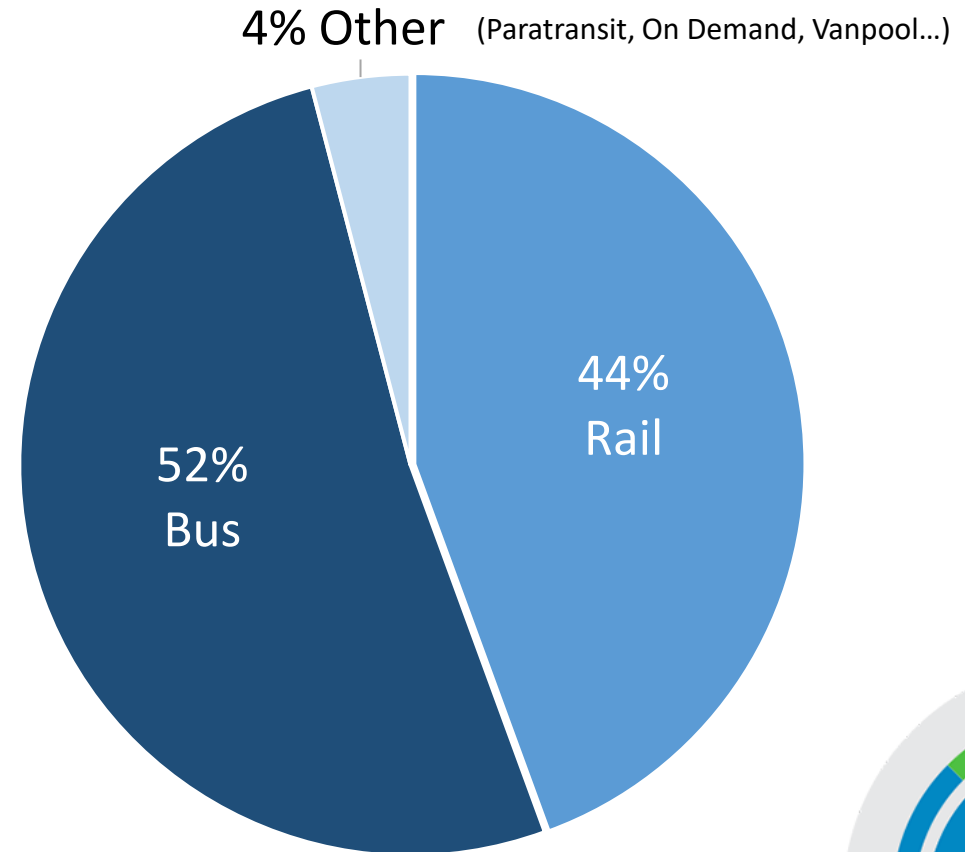
UTA Bus Speed and Reliability Program

- Continuous program
- Small-scale interventions
- Partnership-driven
- A means to implement core routes from RTPs



Importance of bus service

- More than half of UTA ridership is attributed to bus modes
- Bus riders are more likely to:
 - Have lower household income
 - Identify as minority/non-white
 - Use transit
 - more frequently
 - for non-work trips
 - as primary mode of transport
 - throughout the pandemic



2022 Total Ridership

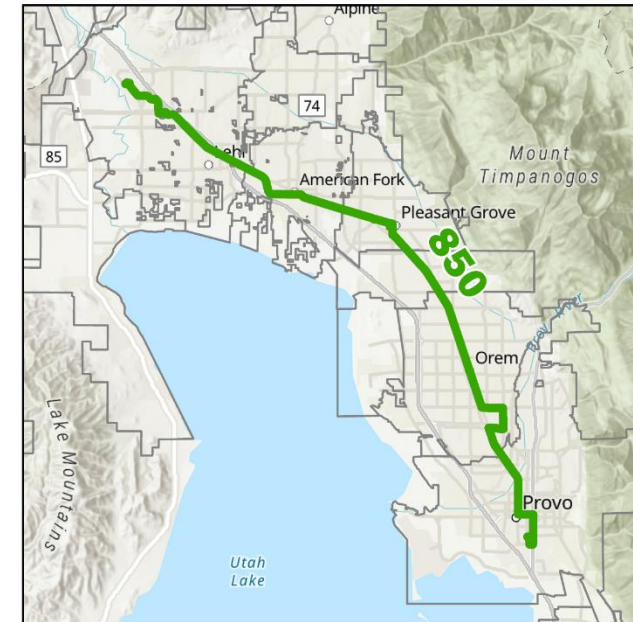
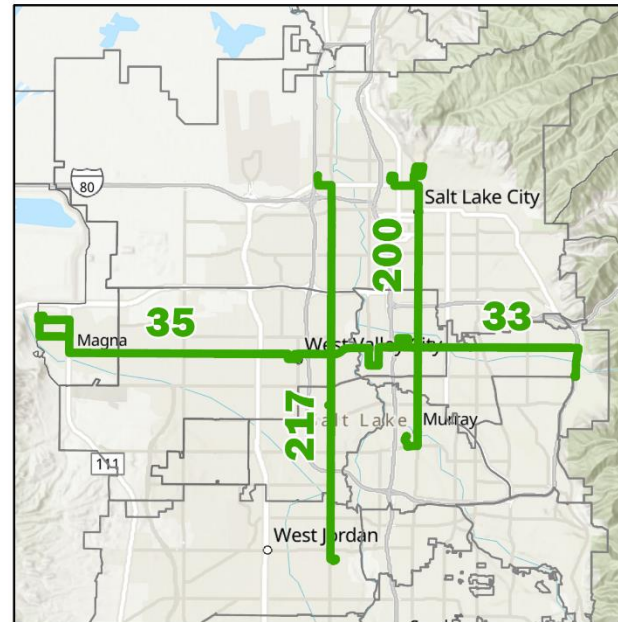


Benefits of improved speed and reliability

- Improved rider and operator experience
- Expanded ridership on existing routes
- Alignment with local and regional goals
- Efficiency: cost, time, labor, energy...
- Safety for all modes of transportation

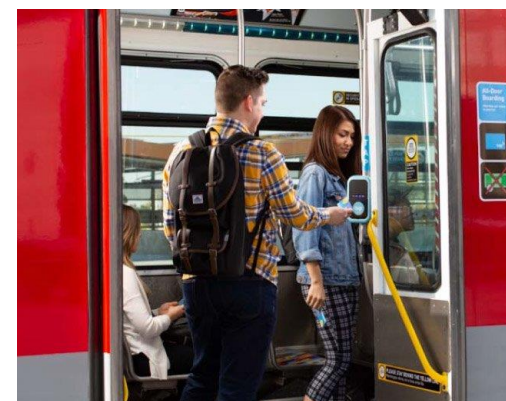
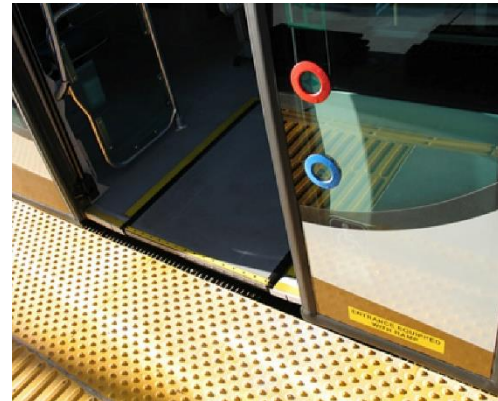


BSRP Initial study routes



BSRP Toolkit

- Transit signal priority (TSP)
- Bus lane or queue jump lane
- Bus stop placement
- In lane bus stops
- Policy suggestions
- ...and more!



Funding and implementation

- \$100,000 budget annually
- Opportunities for grants and partner funding, depending on projects
- Projects are small but can be packaged together.
- In-house design
- Test short-term, low-cost, scalable
 - “Tactical urbanism”

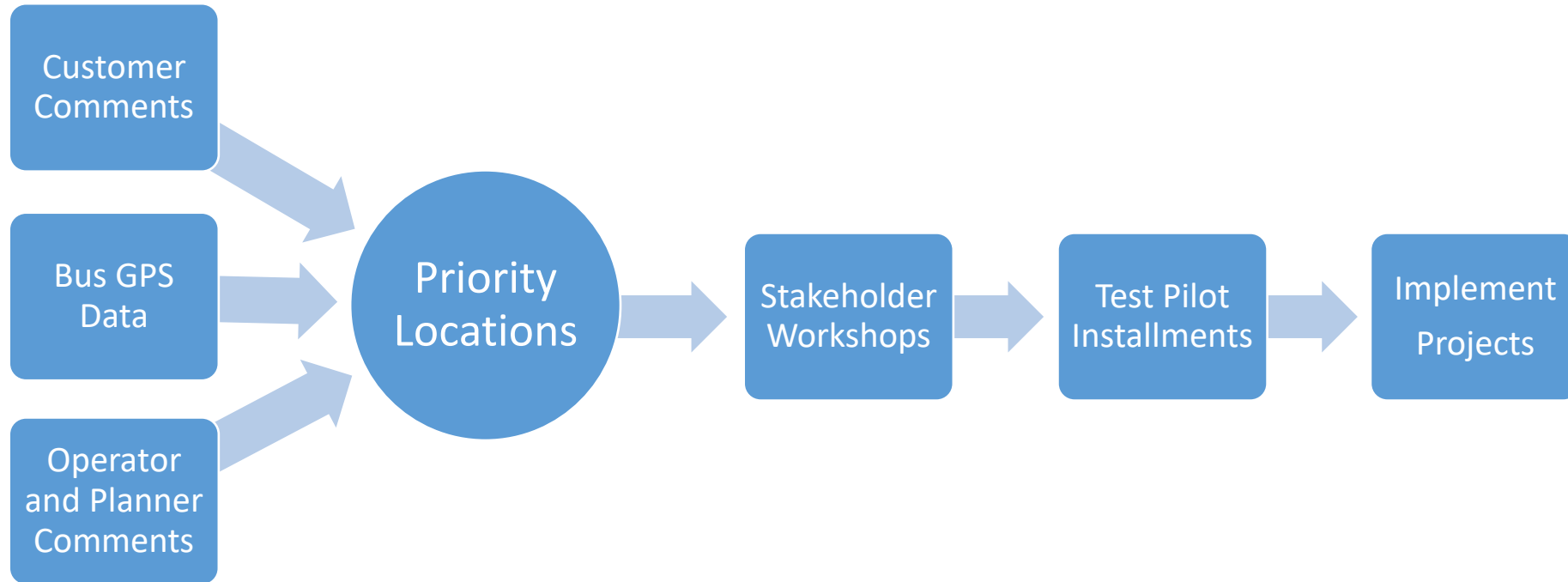


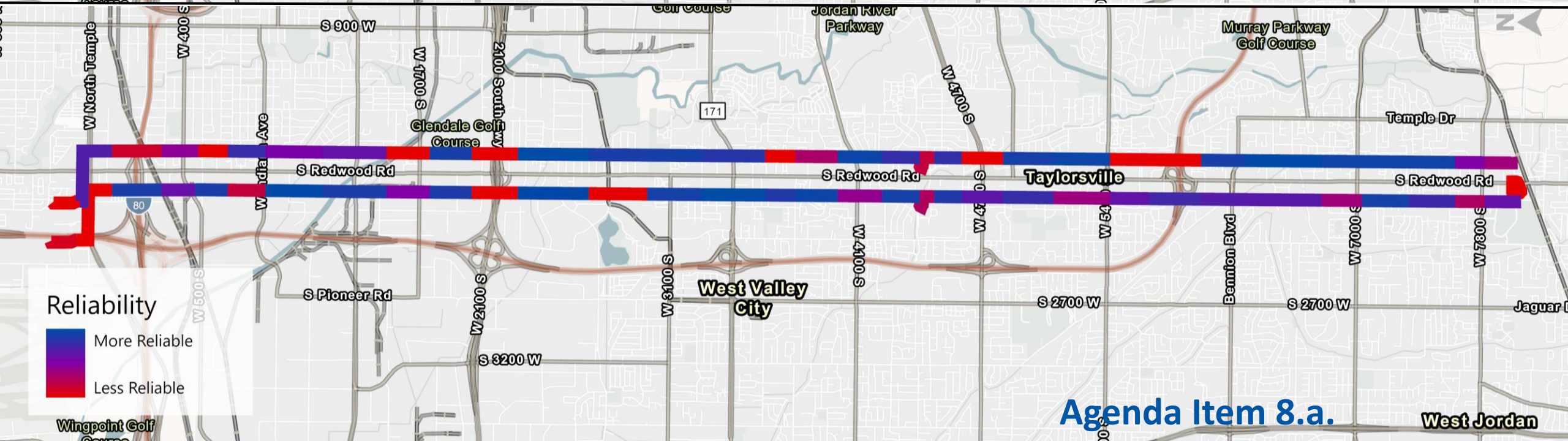
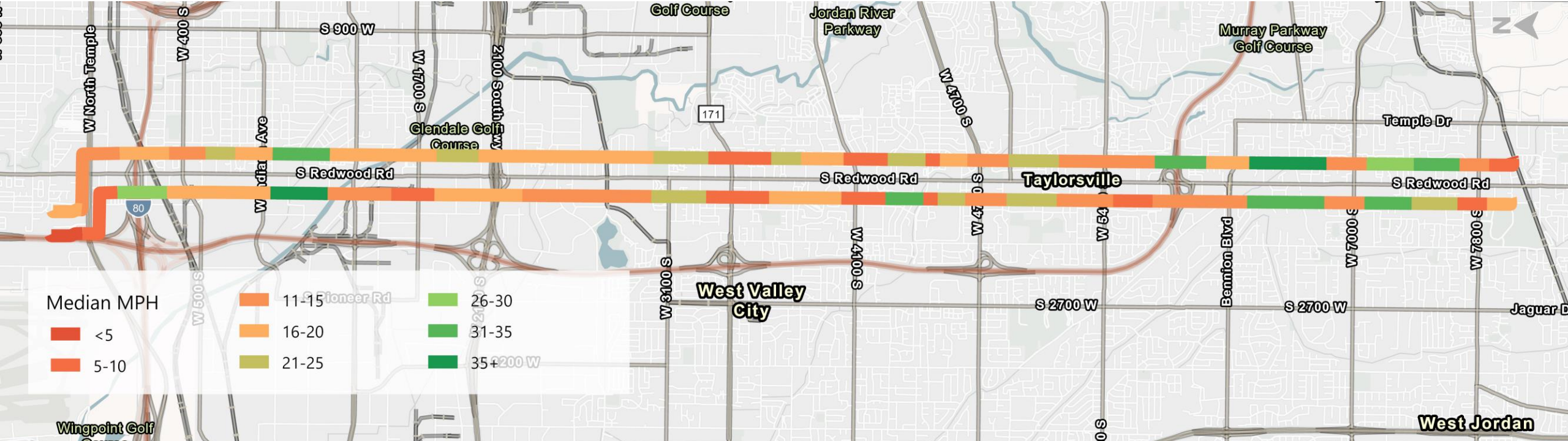
Work to date

- Speed and reliability analysis using vehicle GPS data
- Input from operators, service and operations planners, and others throughout UTA
- Coordination with TSP & bus stop optimization efforts
- Two route-specific workshops: 217, 33/35
- Bus “Ride-Alongs”



From issues to solutions





Agenda Item 8.a.

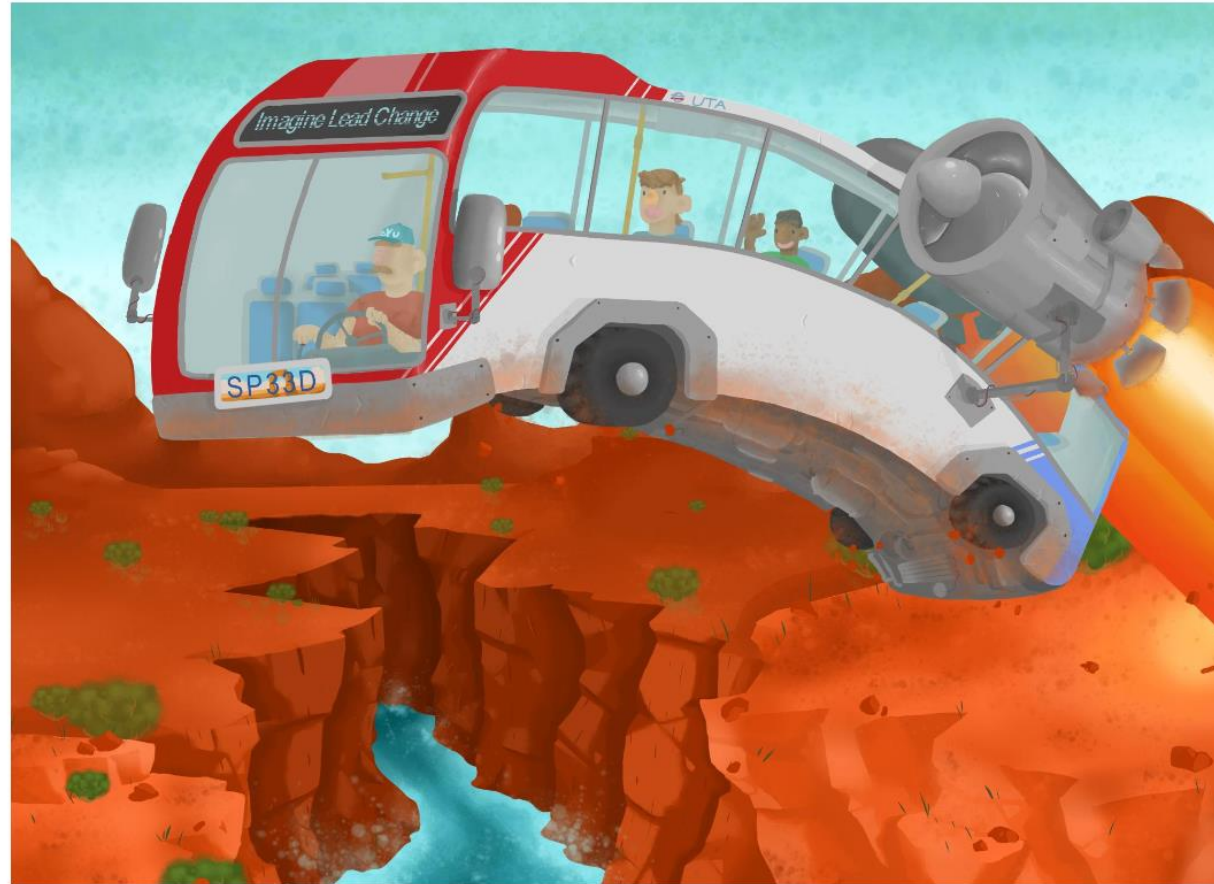
West Jordan

Next Steps

- More workshops and ride-alongs
- Finalize the toolkit document
- Solidify processes for permanent program
- Speed and reliability dashboard
- Identify and begin planning pilot projects
- Public engagement



Thank you!



"The Future of Transportation" - Ben L., 7th - 9th Grade Category



Agenda Item 8.a.