

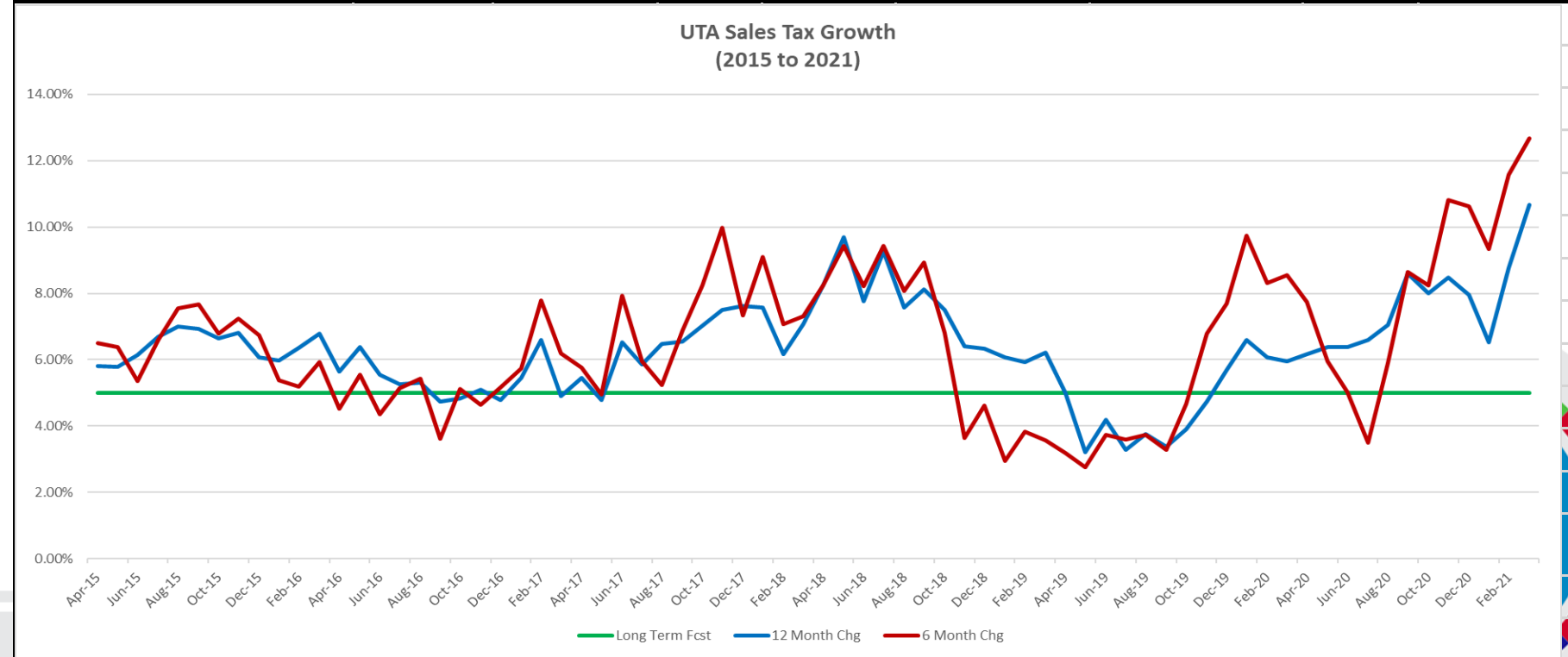
# Financial Report – April 2021



# UTA Board Dashboard

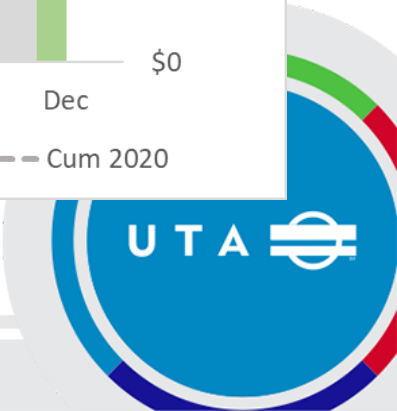
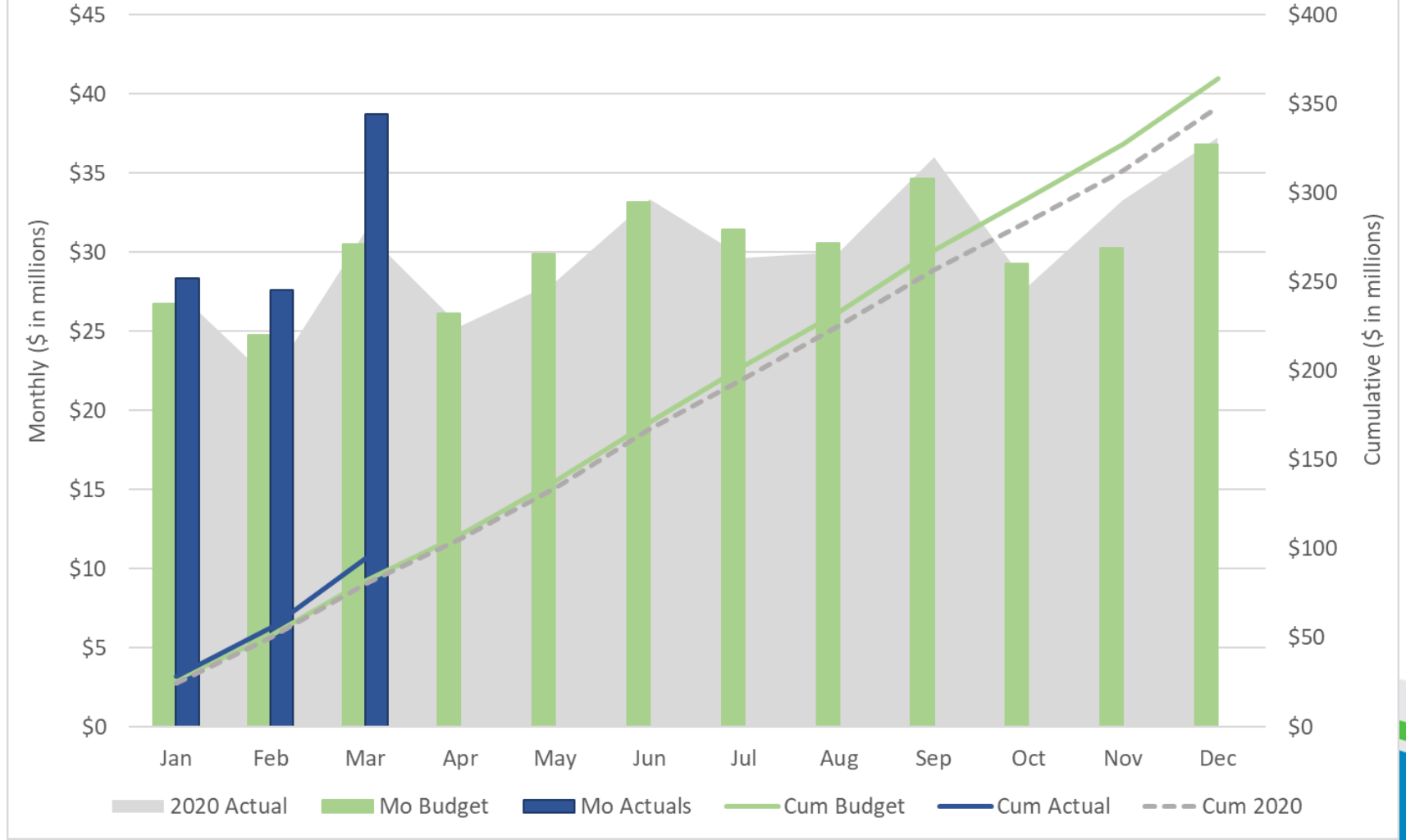
April 2021

Financial Metrics			Fav/ (Unfav)				Fav/ (Unfav)	
	Apr Actual	Apr Budget		%	YTD Actual	YTD Budget		%
Sales Tax (Mar '21 mm \$)	\$ 38.7	\$ 30.5	\$ 8.17	26.8%	\$ 94.6	\$ 82.0	\$ 12.63	15.4%
Fare Revenue (mm)	\$ 2.2	\$ 2.4	\$ (0.20)	-8.4%	\$ 9.8	\$ 10.4	\$ (0.53)	-5.1%
Operating Exp (mm)	\$ 24.3	\$ 26.6	2.24	8.4%	\$ 99.7	\$ 107.2	\$ 7.51	7.0%
Subsidy Per Rider (SPR)	\$ 12.27	\$ 15.06	\$ 2.79	18.5%	\$ 13.05	\$ 15.06	\$ 2.01	13.3%
UTA Diesel Price (\$/gal)	\$ 2.21	\$ 2.25	\$ 0.04	1.7%	\$ 2.13	\$ 2.25	\$ 0.12	5.4%
Operating Metrics	Apr Actual	Apr-20	F/ (UF)	%	YTD Actual	YTD 2020	F/ (UF)	%
Ridership (mm)	1.80	1.20	0.6	49.8%	6.89	11.39	(4.5)	-39.5%
Alternative Fuels	CNG Price (Diesel Gal Equiv)		\$ 1.96					



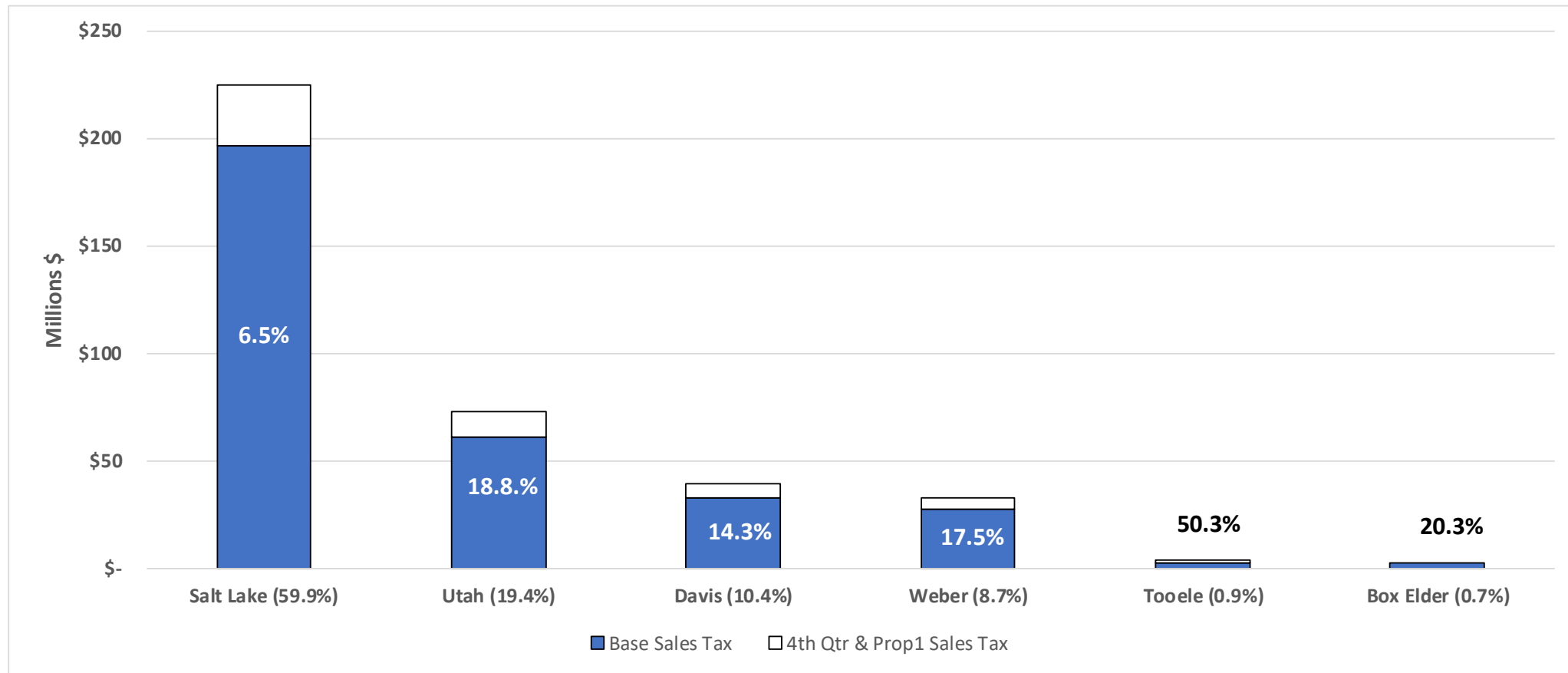
# 2021 Sales Tax

## March (YTD Variance +\$12.6 million)

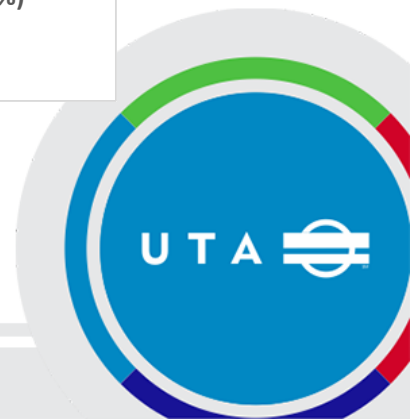


# Sales Tax Collections

(Percentage Growth for 12 months ended March 31, 2021\*)

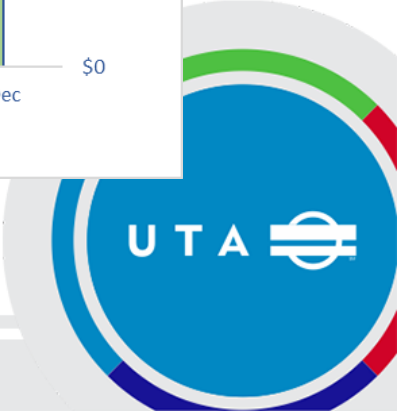
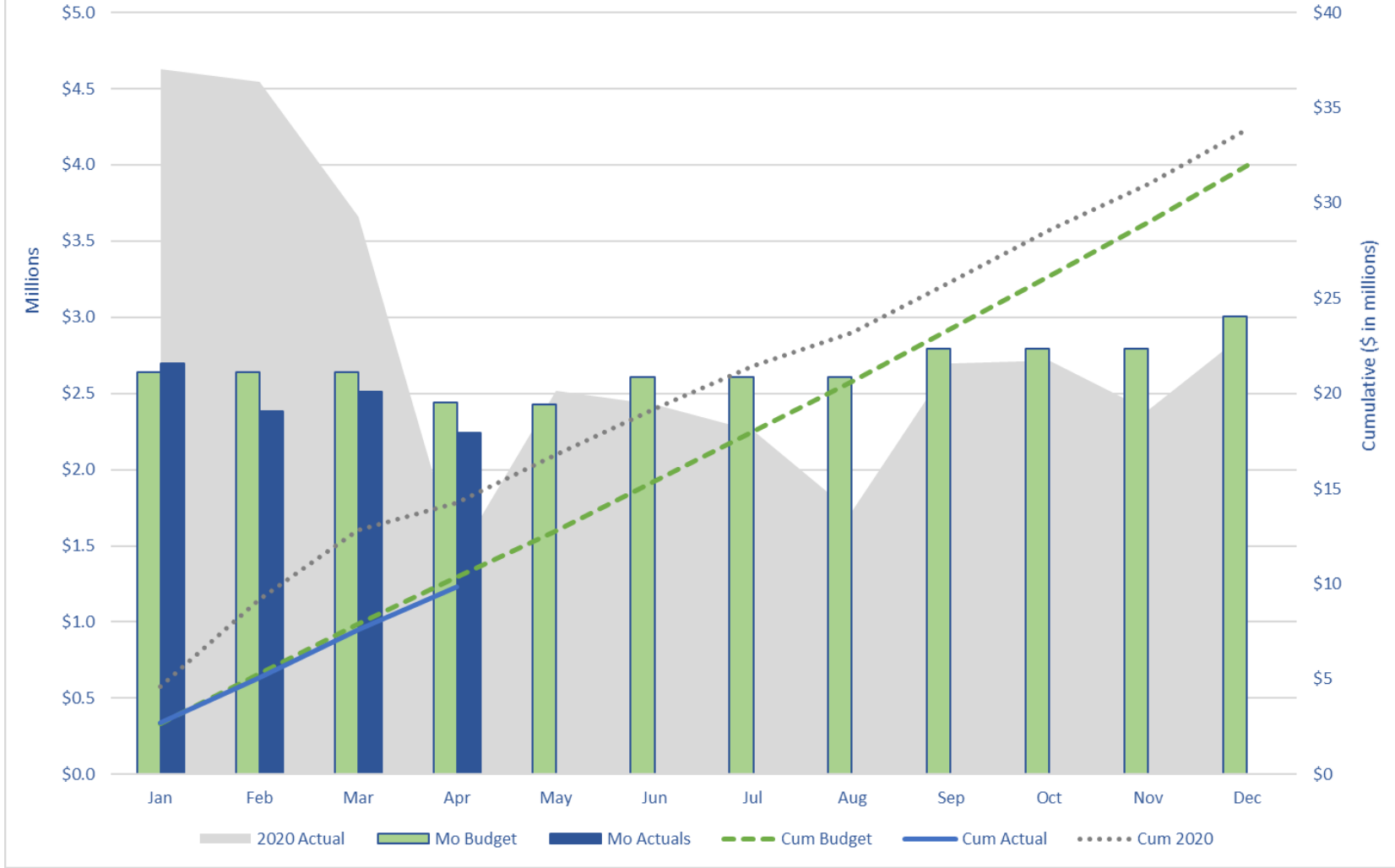


\* Percentage growth in base sales tax revenues over prior year (excludes impact of Proposition 1 and 4<sup>th</sup> quarter rate changes in 2019).

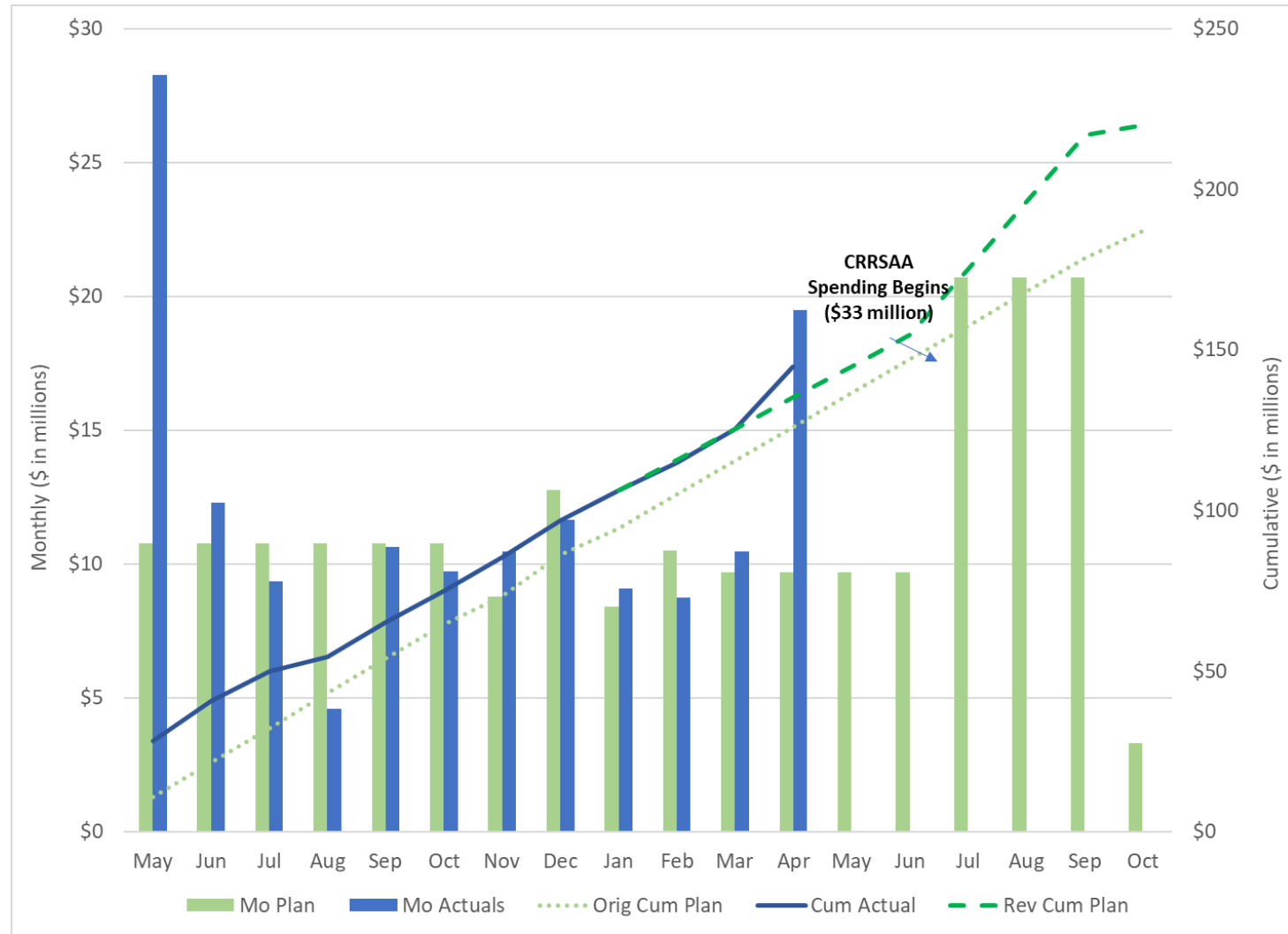


# 2021 Passenger Revenues

## April (YTD Variance -\$526,000)



# 2020 - 2021 Stimulus Funds



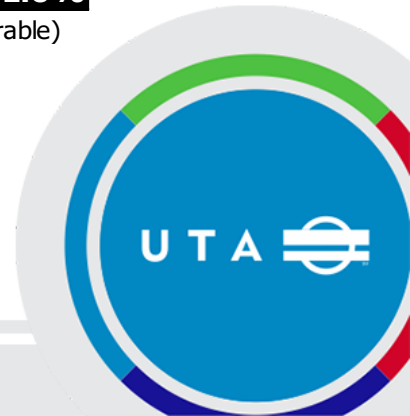
# Operating Financial Results

April 2021

MONTHLY RESULTS					FISCAL YEAR 2021 Dollars in Millions	YEAR-TO-DATE RESULTS				
Prior Year Actual	Current Year					Prior Year Actual	Current Year			
	Actual	Budget	Variance			Actual	Budget	Variance		
					<b>Revenue</b>					
\$ 13.0	\$ 29.0	\$ 26.1	\$ 2.9	10.9%	Sales Tax <i>(Apr accrual)</i>	\$ 96.5	\$ 120.7	\$ 108.1	\$ 12.6	11.7%
1.4	2.2	2.4	(0.2)	-8.4%	Fares	14.3	9.8	10.4	(0.5)	-5.1%
23.6	19.5	14.3	5.2	36.4%	Federal	38.6	57.9	57.2	0.7	1.2%
1.2	0.7	1.4	(0.7)	-51.4%	Other	5.1	3.0	4.9	(1.8)	-37.8%
<b>\$ 39.2</b>	<b>\$ 51.4</b>	<b>\$ 44.2</b>	<b>\$ 7.1</b>	<b>16.1%</b>	<b>TOTAL REVENUE</b>	<b>\$ 154.5</b>	<b>\$ 191.4</b>	<b>\$ 180.5</b>	<b>\$ 11.0</b>	<b>6.1%</b>
					<b>Expense</b>					
\$ 13.0	\$ 12.9	\$ 13.3	\$ 0.3	2.4%	Salary/Wages	\$ 51.8	\$ 51.7	\$ 53.1	\$ 1.4	2.6%
6.0	5.0	6.2	1.2	19.9%	Fringe Benefits	24.0	24.8	25.0	0.2	0.6%
1.3	2.2	2.5	0.2	8.8%	Services	6.1	7.4	9.9	2.5	25.6%
2.6	2.0	1.9	(0.2)	-8.1%	Parts	7.6	6.2	7.6	1.4	18.5%
0.6	1.8	1.9	0.1	4.5%	Fuel	5.9	7.0	7.4	0.4	5.7%
0.5	0.4	0.5	0.1	24.8%	Utilities	2.0	2.4	2.0	(0.4)	-21.2%
1.1	0.8	1.1	0.4	32.0%	Other	3.6	3.1	5.2	2.1	40.1%
(1.1)	(0.8)	(0.8)	(0.0)	6.0%	Capitalized Cost	(3.4)	(3.0)	(3.1)	0.0	-1.5%
<b>\$ 24.1</b>	<b>\$ 24.3</b>	<b>\$ 26.6</b>	<b>\$ 2.2</b>	<b>8.4%</b>	<b>TOTAL EXPENSE</b>	<b>\$ 97.5</b>	<b>\$ 99.7</b>	<b>\$ 107.2</b>	<b>\$ 7.5</b>	<b>7.0%</b>
\$ 9.2	\$ 7.7	\$ 7.5	\$ (0.2)	-2.5%	Debt Service	\$ 35.4	\$ 30.6	\$ 30.1	\$ (0.5)	-1.7%
<b>\$ 6.0</b>	<b>\$ 19.3</b>	<b>\$ 10.1</b>	<b>\$ 9.2</b>	<b>90.3%</b>	<b>Contrib. Capital/Reserve</b>	<b>\$ 21.5</b>	<b>\$ 61.1</b>	<b>\$ 43.2</b>	<b>\$ 18.0</b>	<b>41.6%</b>

Favorable/(Unfavorable)

Favorable/(Unfavorable)



# 2021 Operating Expense by Mode YTD

## Operating Expense By Mode (\$ in Millions)

MTD	Apr 2020		April 2021		Variance '21	
	Actual	Actual	Budget	\$	Percent	
<i>Administrative</i>	\$ 3.5	\$ 3.2	\$ 3.7	\$ 0.5	12.4%	
<i>Operating Support</i>	3.9	4.4	4.4	0.0	1.0%	
<i>Bus</i>	8.5	8.3	9.1	0.8	8.9%	
<i>Light Rail</i>	3.0	3.1	3.4	0.3	7.7%	
<i>Commuter Rail</i>	1.8	1.7	2.1	0.3	15.1%	
<i>Maintenance of Way</i>	1.5	1.5	1.6	0.1	8.9%	
<i>Paratransit</i>	1.7	1.9	2.0	0.1	6.8%	
<i>Special Services</i>	0.2	0.2	0.3	0.1	23.1%	
<b>Total Operating Expense</b>	<b>\$ 24.1</b>	<b>\$ 24.3</b>	<b>\$ 26.5</b>	<b>\$ 2.2</b>	<b>8.4%</b>	

YTD	Apr 2020		April 2021		Variance '21	
	Actual	Actual	Budget	\$	Percent	
<i>Administrative</i>	\$ 12.0	\$ 11.9	\$ 15.5	\$ 3.6	23.0%	
<i>Operating Support</i>	15.9	17.1	17.8	0.7	4.1%	
<i>Bus</i>	35.5	35.7	36.6	0.9	2.5%	
<i>Light Rail</i>	11.9	12.4	13.6	1.1	8.2%	
<i>Commuter Rail</i>	7.6	7.2	8.0	0.8	9.6%	
<i>Maintenance of Way</i>	6.3	6.6	6.5	(0.2)	-2.6%	
<i>Paratransit</i>	7.4	7.6	8.0	0.4	4.4%	
<i>Special Services</i>	0.9	1.0	1.2	0.2	18.6%	
<b>Total Operating Expense</b>	<b>\$ 97.5</b>	<b>\$ 99.7</b>	<b>\$ 107.2</b>	<b>\$ 7.5</b>	<b>7.0%</b>	



# Questions?

