

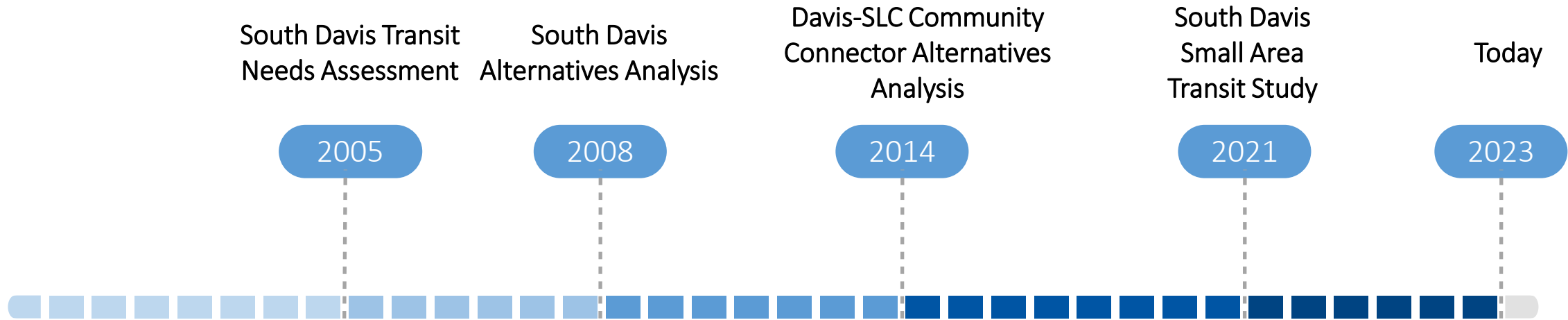
**AR2023-05-01**

**Resolution Approving Davis-SLC  
Community Connector Locally  
Preferred Alternative and  
Recommending Approval by the  
Authority's Board of Trustees**



# Background

Previous transit studies identified a need for a project:



Based on technical analysis, coordination with stakeholders, and public outreach, it was recommended that the Davis-SLC Community Connector project connect Farmington to Research Park at the University of Utah.



# Project

- Corridor-based Bus Rapid Transit to connect:
  - FrontRunner Farmington Station
  - Centerville
  - Bountiful
  - Woods Cross
  - North Salt Lake
  - Downtown Salt Lake City
  - University of Utah/Research Park
- All mixed flow, no dedicated lane
- Completing Federal National Environmental Policy Act (NEPA) document and design



# Davis-SLC Community Connector LPA

- 26-mile corridor
- Corridor-based Bus Rapid Transit
- 15-minute service 6am – 8pm with 30-minute service in early mornings and late evenings
- 18 new battery electric buses
- 12 new stations/6 new stops
- Will utilize ~17 other stops
- End of line platforms with overhead chargers
- ~5800 riders per day
- Capital cost: \$75M



Davis-Salt Lake City Community Connector

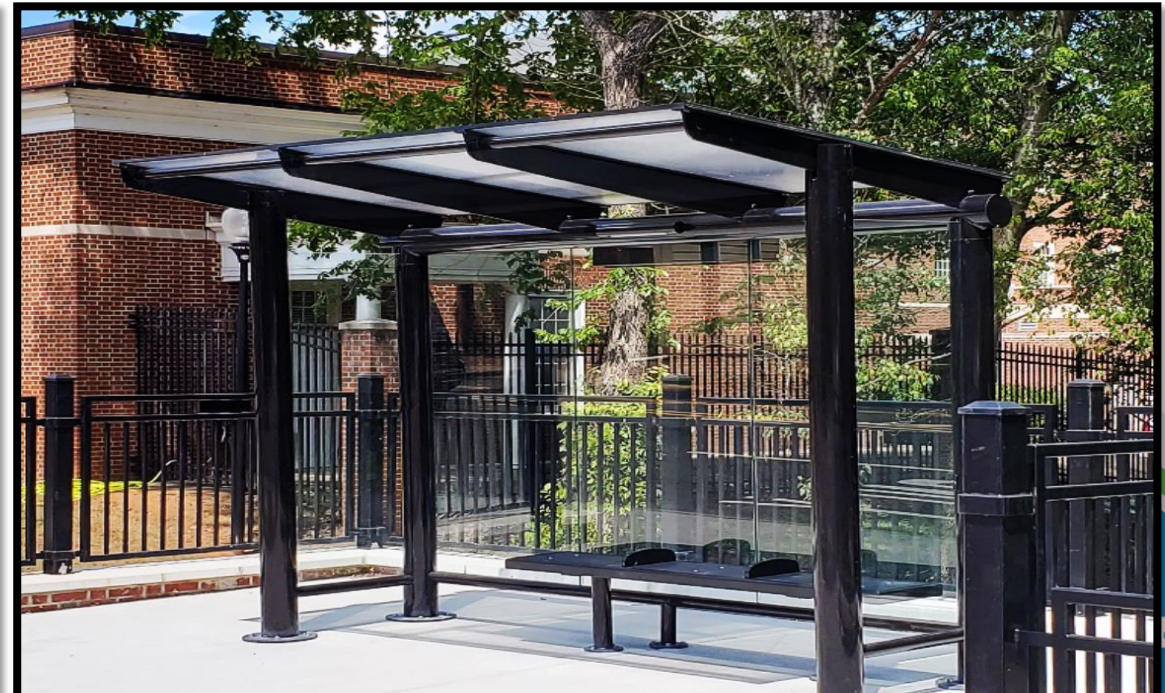
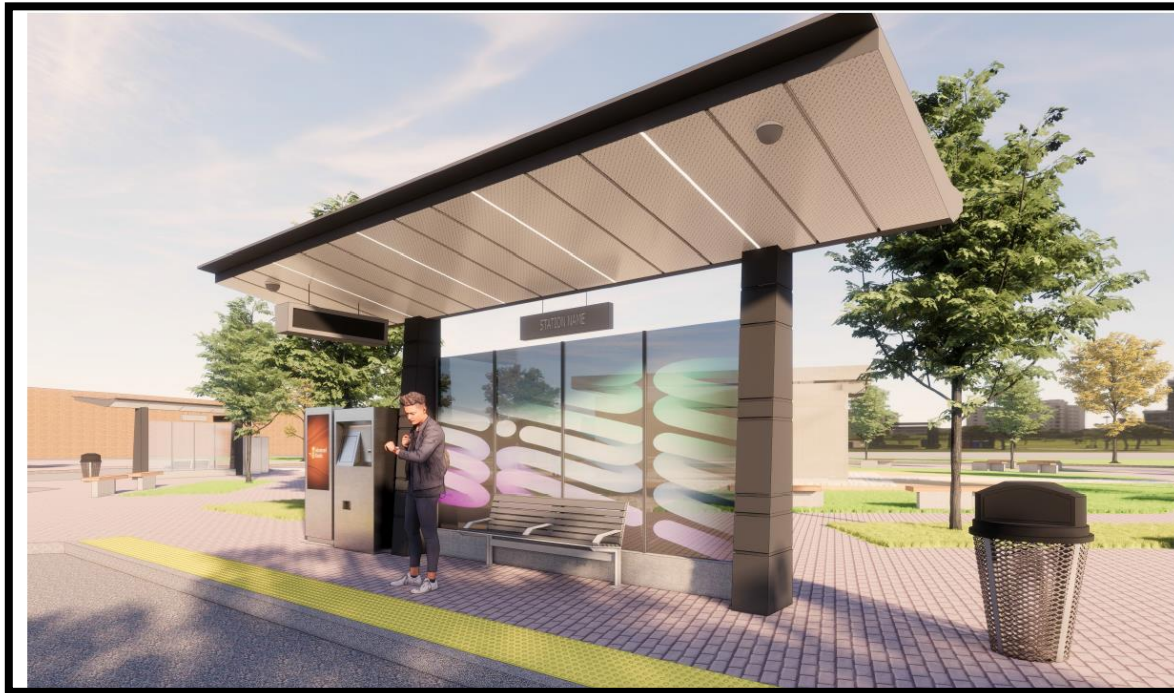
# Stations

vs.

# Stops

- Built specifically for the project
- Includes a substantial canopy with architectural features
- Additional amenities
- Level or Near Level Boarding

- Served by local routes
- Includes a prefabricated shelter
- Standard UTA bus stop amenities (included amenities can vary by location)



## LPA Status

- Project partners, including affected Cities, were updated on April 25, 2023
- Included in WFRC Draft 2023-2050 RTP (expected adoption date of May 2023)
- Requesting Local Advisory Council approval today
- Next step is UTA Board of Trustees approval



# Capital Funding

Draft Funding Plan:	
Federal - 50% to 80% Share	
Small Starts Funding	\$37.5 M - \$60M
Local - 20% to 50% Share	
Local Funding Needed	\$15M - \$37.5M
Potential Sources of Local Funding	
UTA Funds	\$5M - \$10M
WFRC CMAQ/STP	\$5M - \$10M
Davis County	\$3.5M - \$5M
Salt Lake County	\$1.5M - \$5M
Legislative/TTIF Funds	\$10M - \$20M
Rocky Mountain Power	\$1M
<b>Total Project Cost:</b>	<b>\$75M</b>



## Next Steps

- LPA approval by UTA Local Advisory Council and Board of Trustees will allow drafting of Capital Project plan to proceed
- Continue completion of NEPA document and design
- Request entry into FTA Project Development
- Once partner funding commitments are finalized, Capital Project plan will be presented to Local Advisory Council and Board of Trustees for their approval
- Submit Small Starts grant application



# Recommended Action (by acclamation)

Motion to approve AR2023-05-01  
Resolution Approving the Davis-Salt Lake City Community Connector  
Locally Preferred Alternative  
and recommending approval by the Authority's Board of Trustees

