

# Ridership Report

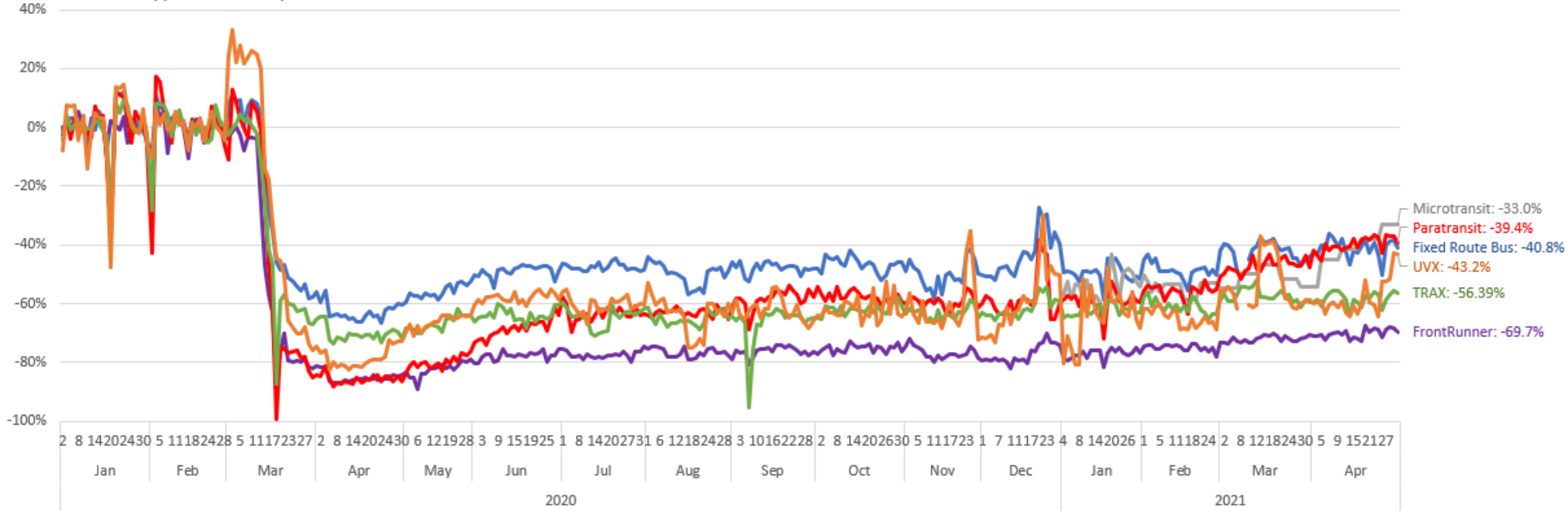
## January – April 2021

Leave this area blank  
on every slide.



# Ridership Report

Daily Ridership by Mode - % Difference from Normal Ridership  
Service Type: Weekday



\* All ridership is taken from unadjusted, preliminary data and is subject to change.

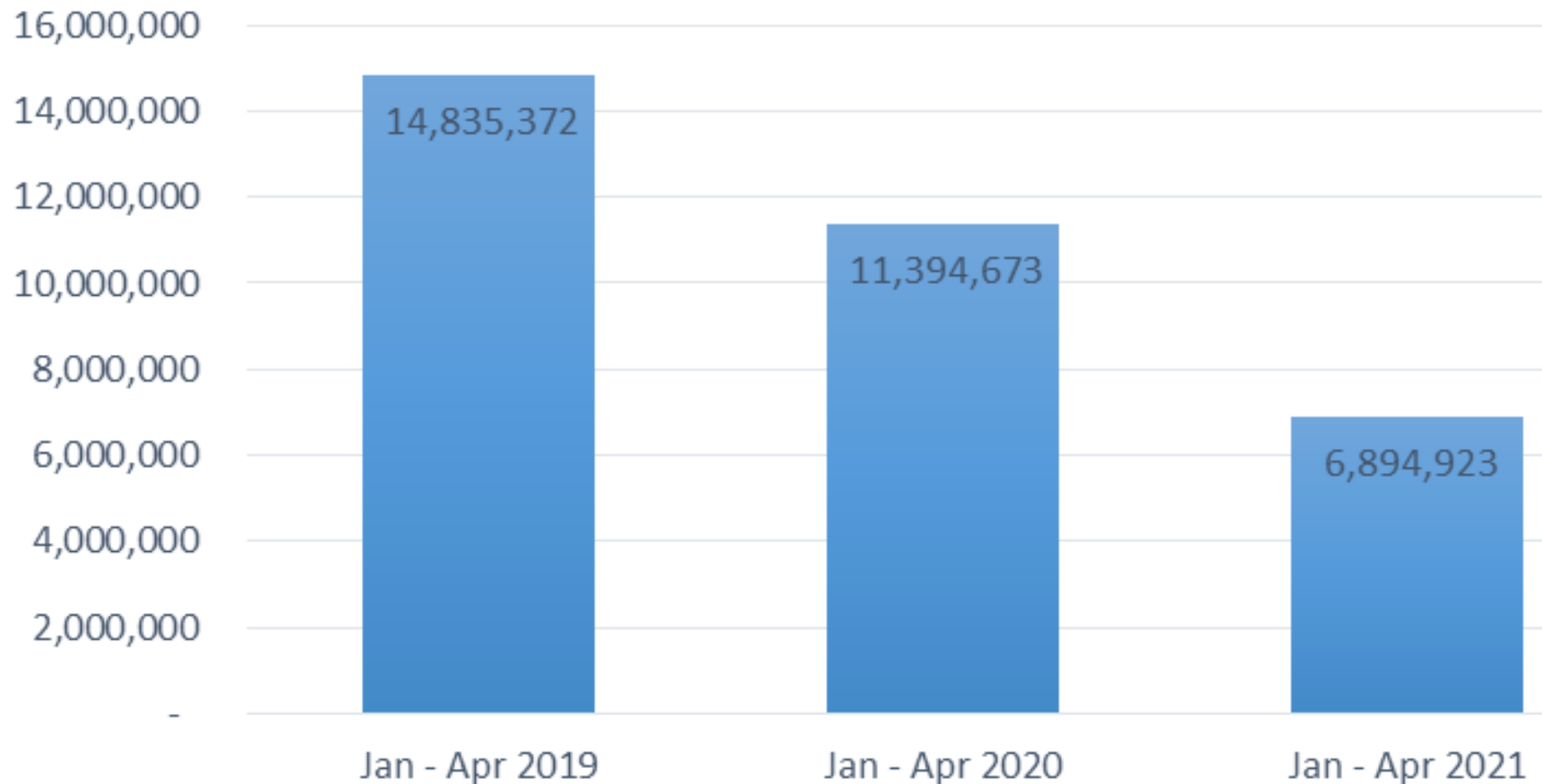
\*\* Dates with holidays in the current or previous years have been removed.

Leave this area blank  
on every slide.



# Ridership Report

## Year to Year Ridership January - April

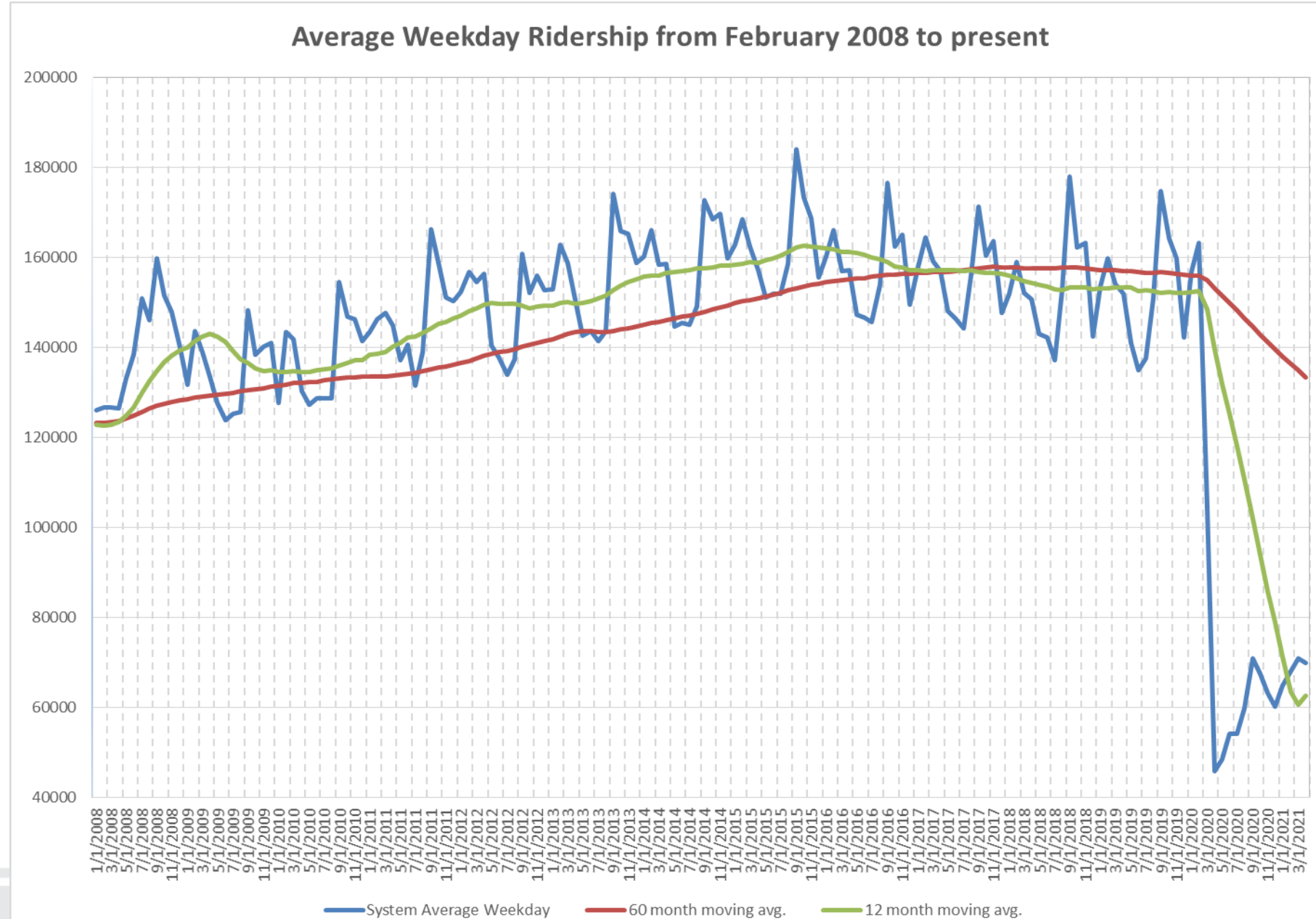


Leave this area blank  
on every slide.



# Ridership Report

Leave this area blank  
on every slide.



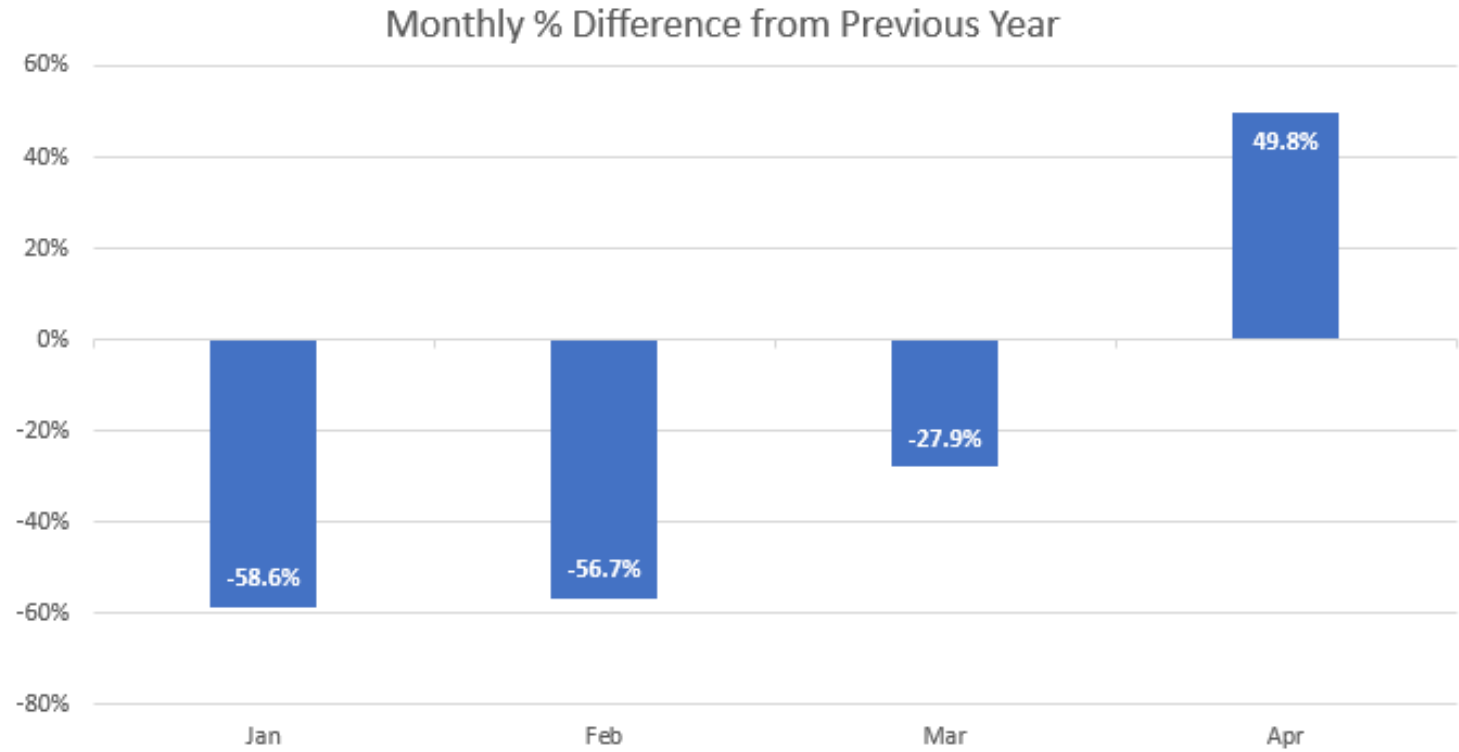
# Ridership Report

Mode	Jan - Apr 2020	Jan - Apr 2021	% Change
Bus System	5,581,233	3,746,929	-32.9%
Paratransit	91,069	65,805	-27.7%
Route Deviations	102,034	72,820	-28.6%
Mobility Management	818	815	-0.4%
Light Rail	3,967,492	2,216,987	-44.1%
S-Line	125,672	80,491	-36.0%
Commuter Rail	1,153,130	502,105	-56.5%
Vanpool	373,226	208,971	-44.0%
<b>UTA System</b>	<b>11,394,673</b>	<b>6,894,923</b>	<b>-39.5%</b>

Leave this area blank  
on every slide.



# Ridership Report



Leave this area blank  
on every slide.



# Ridership Report



Leave this area blank  
on every slide.



# Questions?

Leave this area blank  
on every slide.

