

Agency Report

- Ridership report



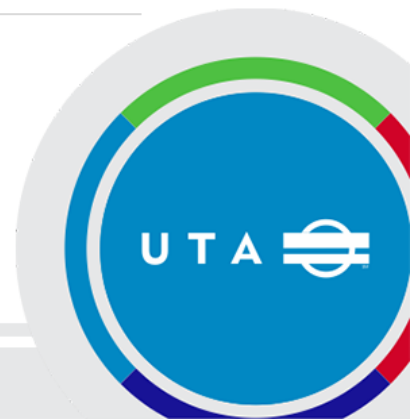
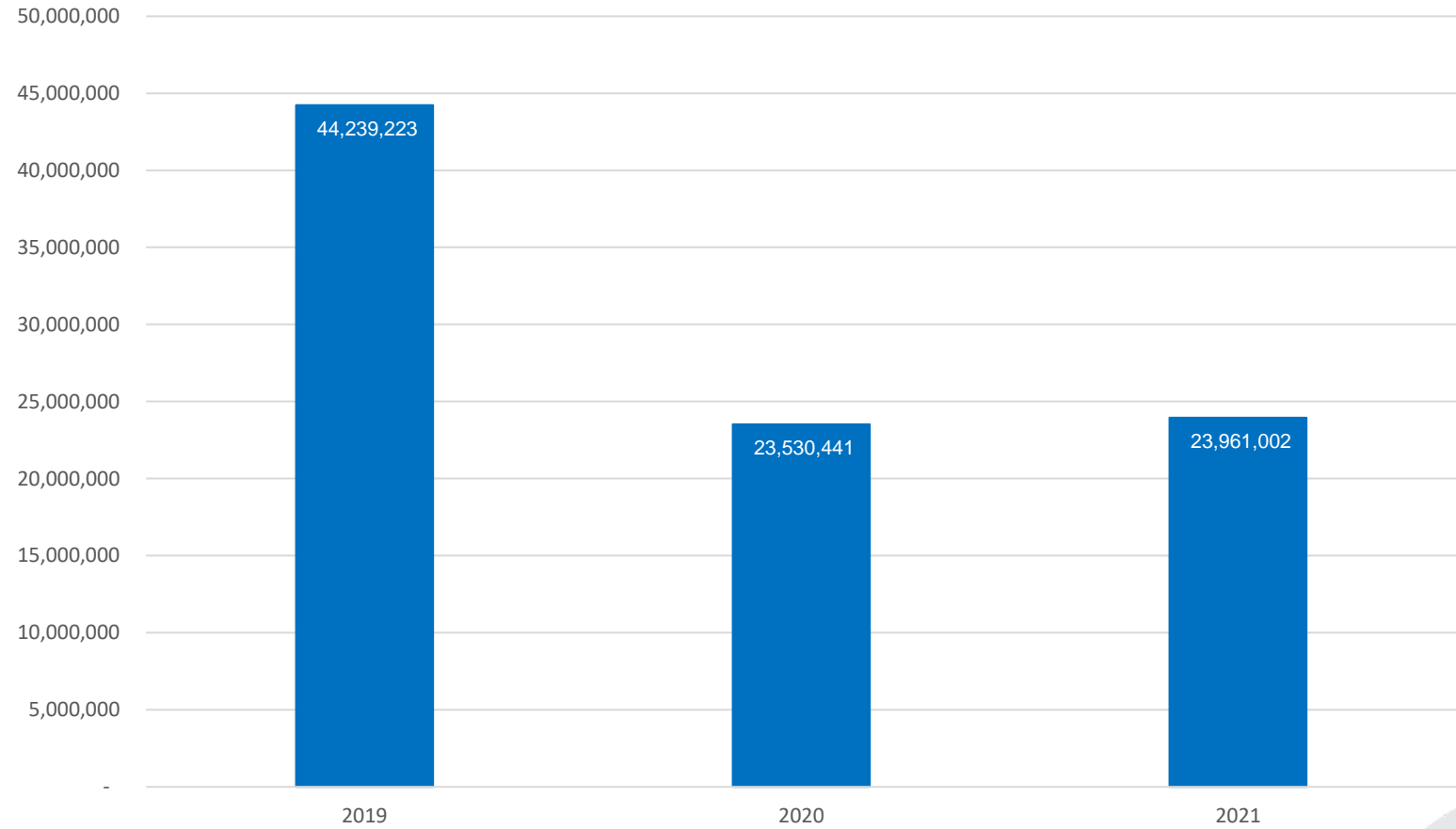
Ridership Report

January-December 2021



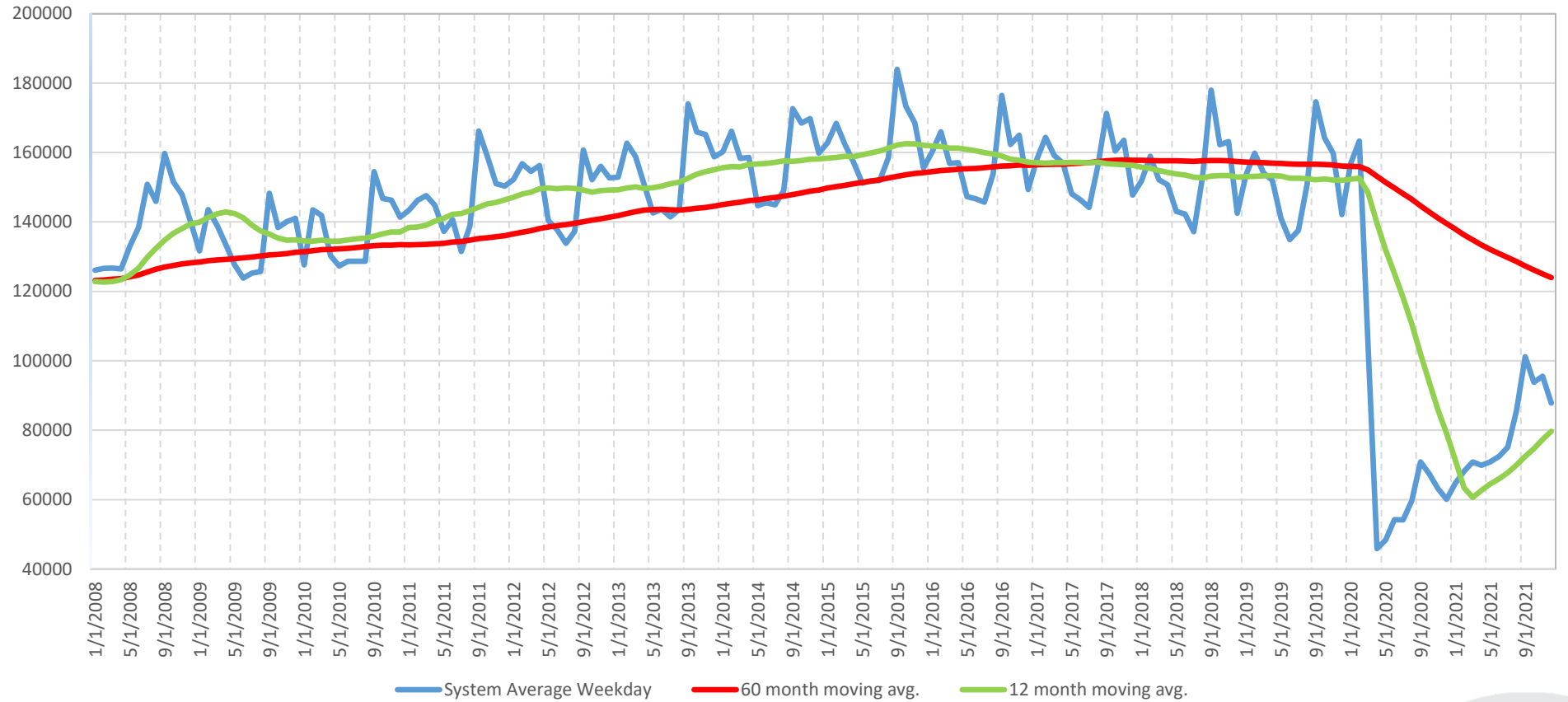
Ridership Report

Year to Year Ridership January - December



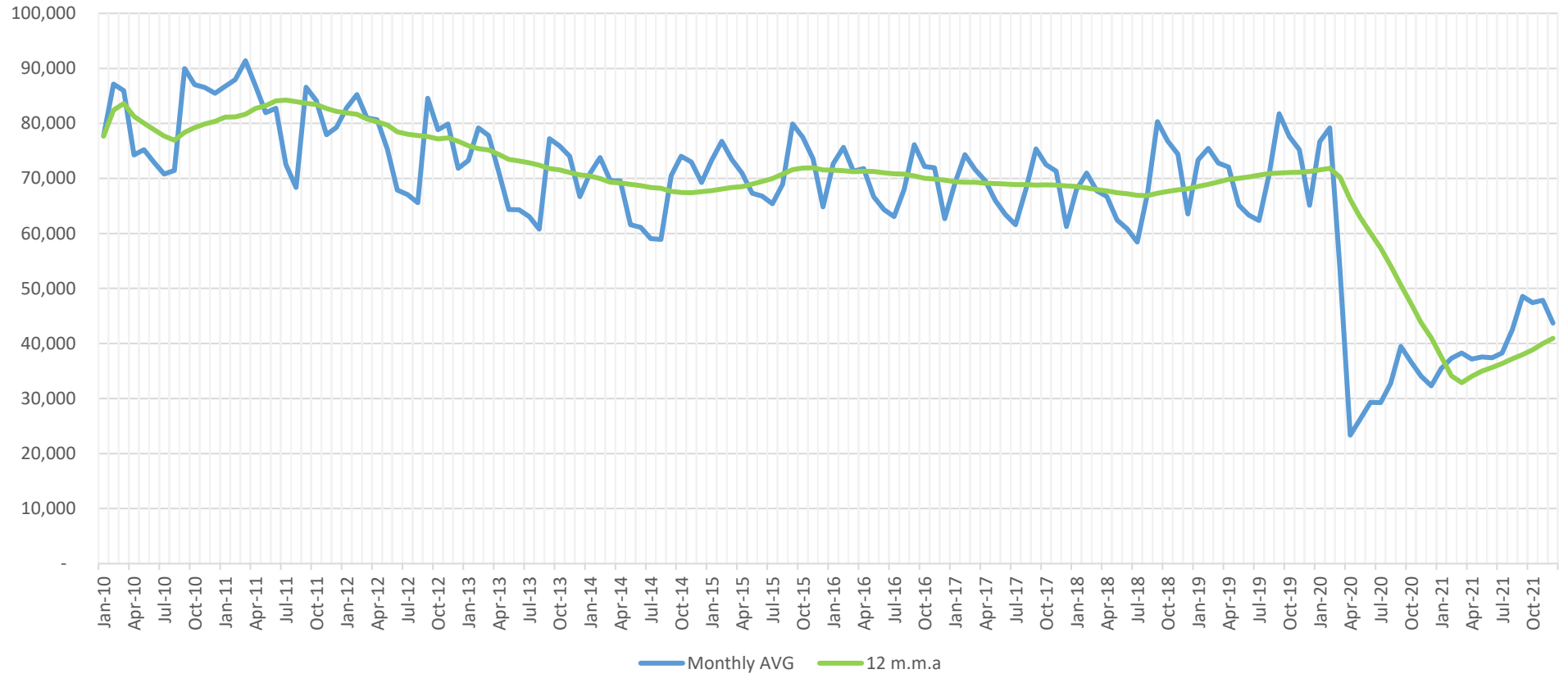
Ridership Report

Average Weekday Ridership from February 2008 to present



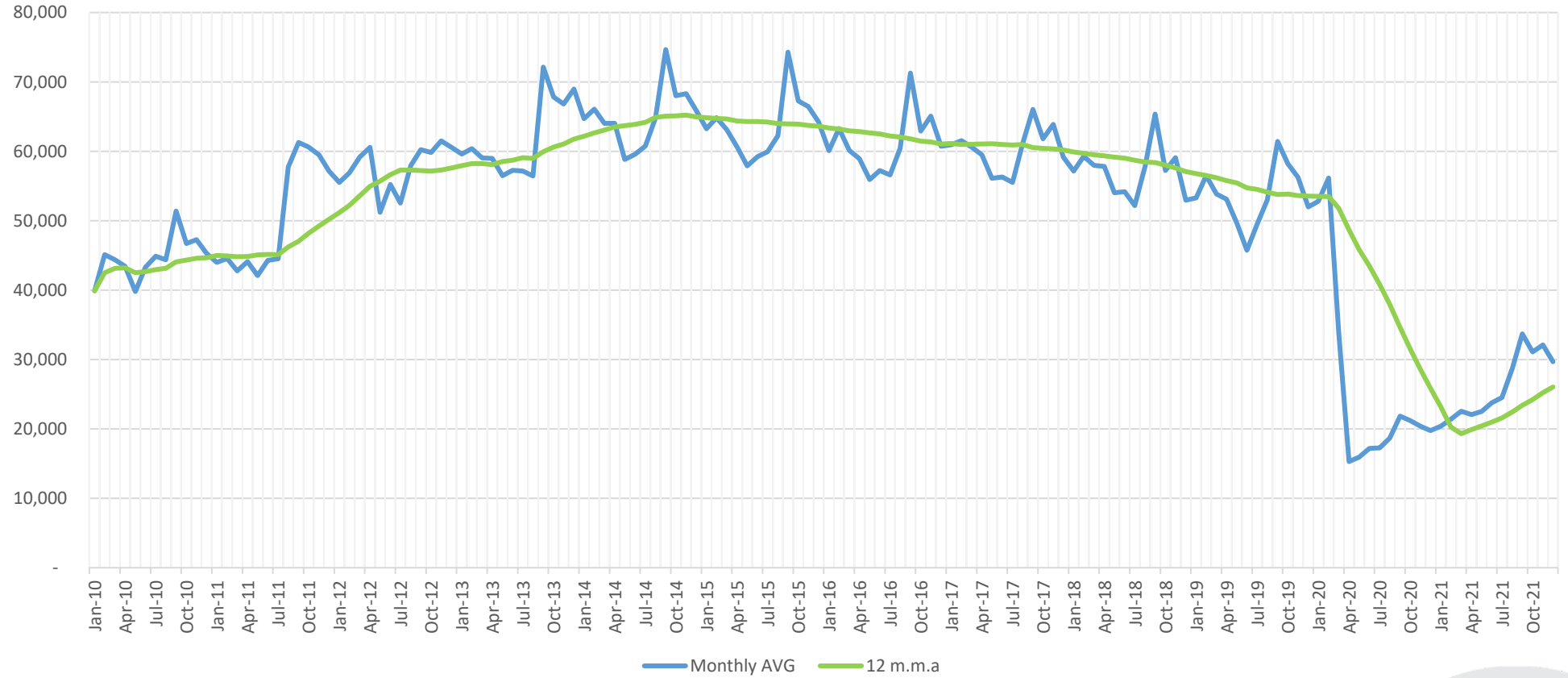
Ridership Report

Fixed Route Bus Average Weekday Ridership from 2010 to 2021



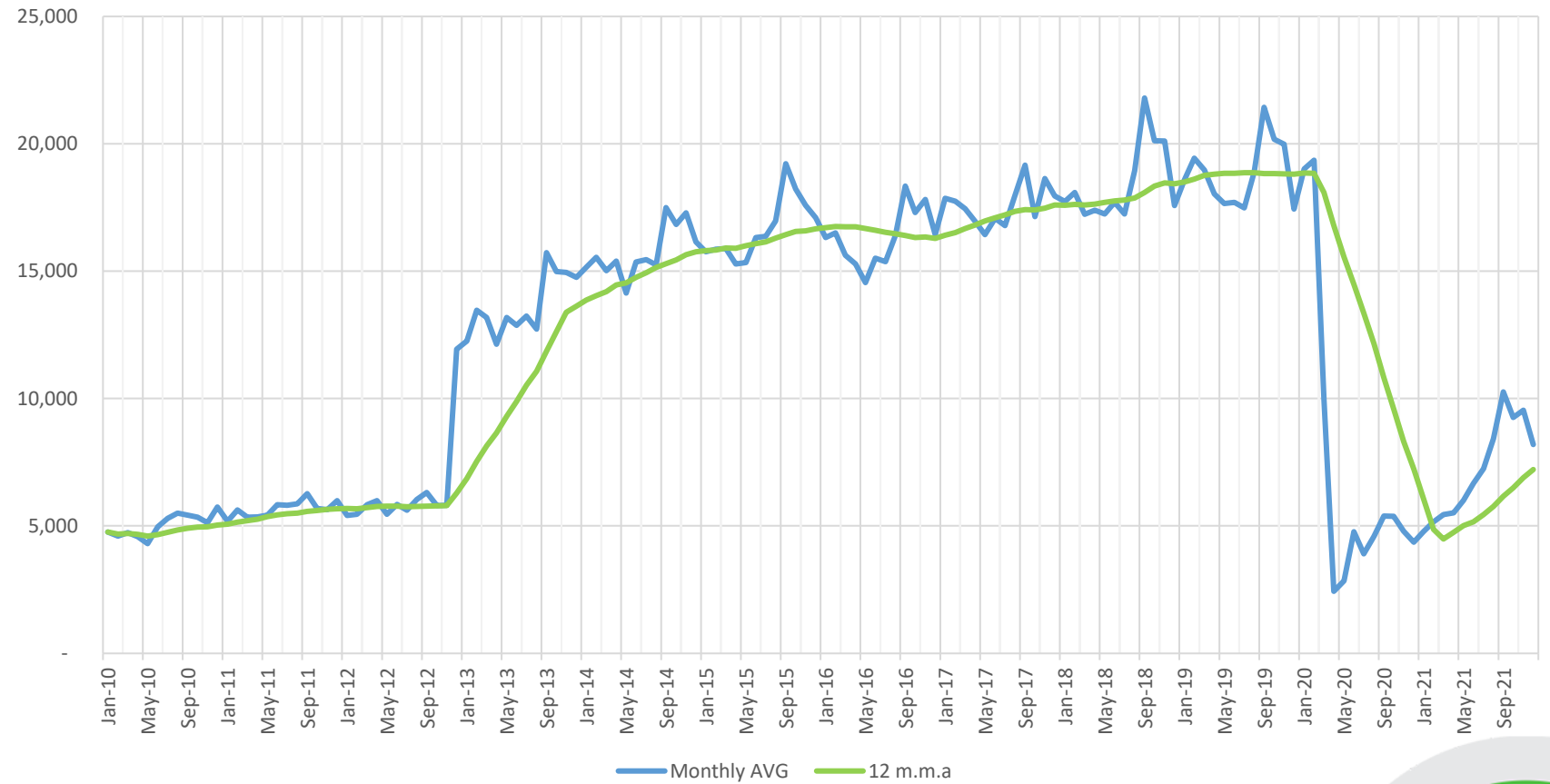
Ridership Report

TRAX Average Weekday Ridership from 2010 to 2021



Ridership Report

FrontRunner Average Weekday Ridership from 2010 to 2021



Ridership Report

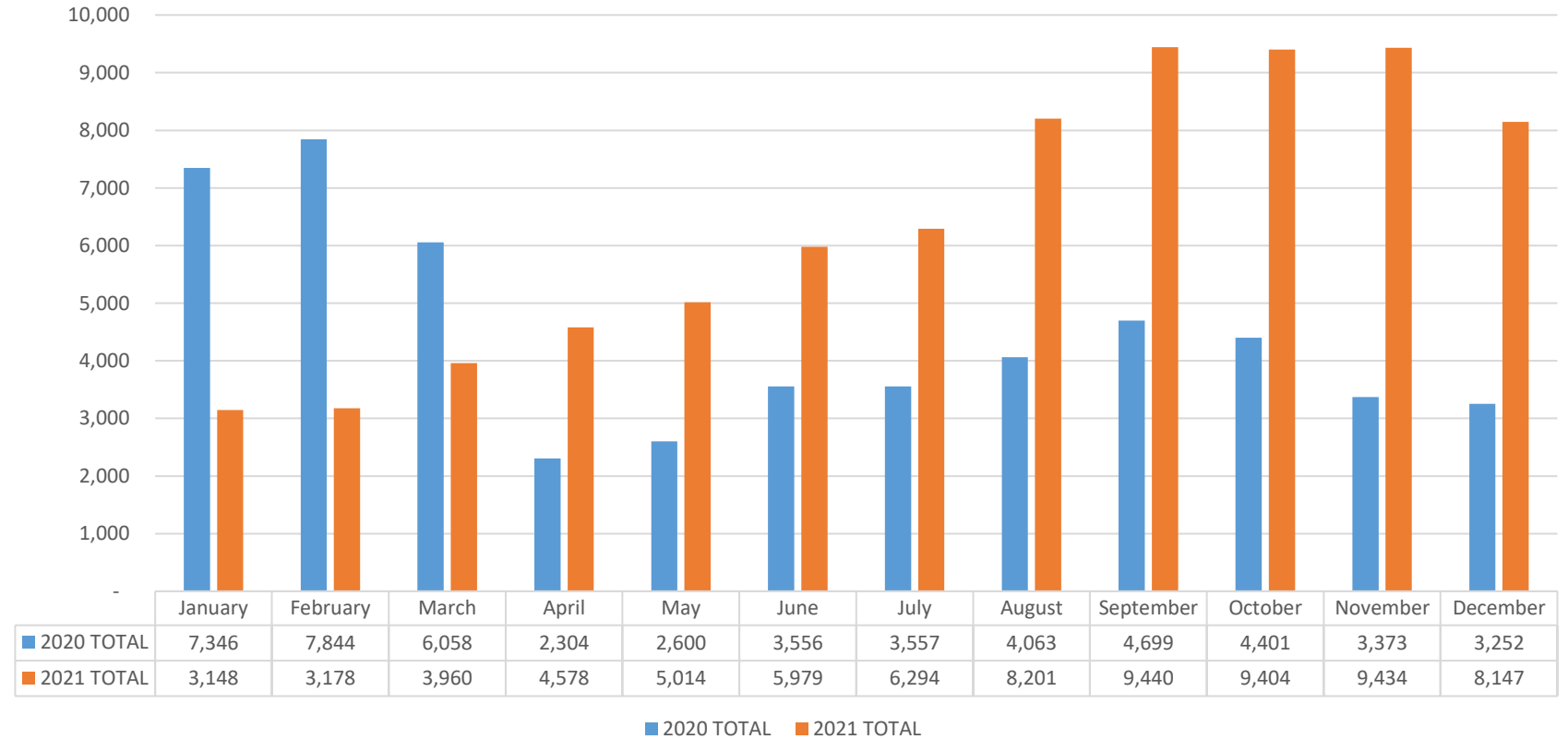
Mode	Jan - Dec 2020	Jan - Dec 2021	% Change
Bus System	12,142,866	12,310,065	1.38
Paratransit	185,024	254,524	37.56
Route Deviations	226,488	305,940	35.08
Mobility Management	2,088	2,379	13.94
Light Rail	7,975,159	8,119,529	1.81
Streetcar (S-Line)	272,206	284,334	4.46
Commuter Rail	2,024,523	2,062,333	1.87
Vanpool	702,087	577,272	-17.78
UTA On Demand (VIA)	NA	44,626	NA
UTA System	23,530,441	23,961,002	1.83

* MicroTransit became an official transit mode in Aug 2021.



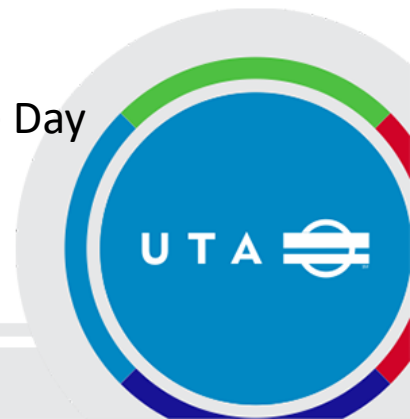
Ridership Report

UTA on Demand(Via) Microtransit Monthly Comparison



Mode	Jan - Dec 2020	Jan - Dec 2021	% Change
Microtransit	53,053	76,777	45%

- MicroTransit replaced several Flex Routes starting August Change Day



Ridership Report

Fixed Route Bus Ridership

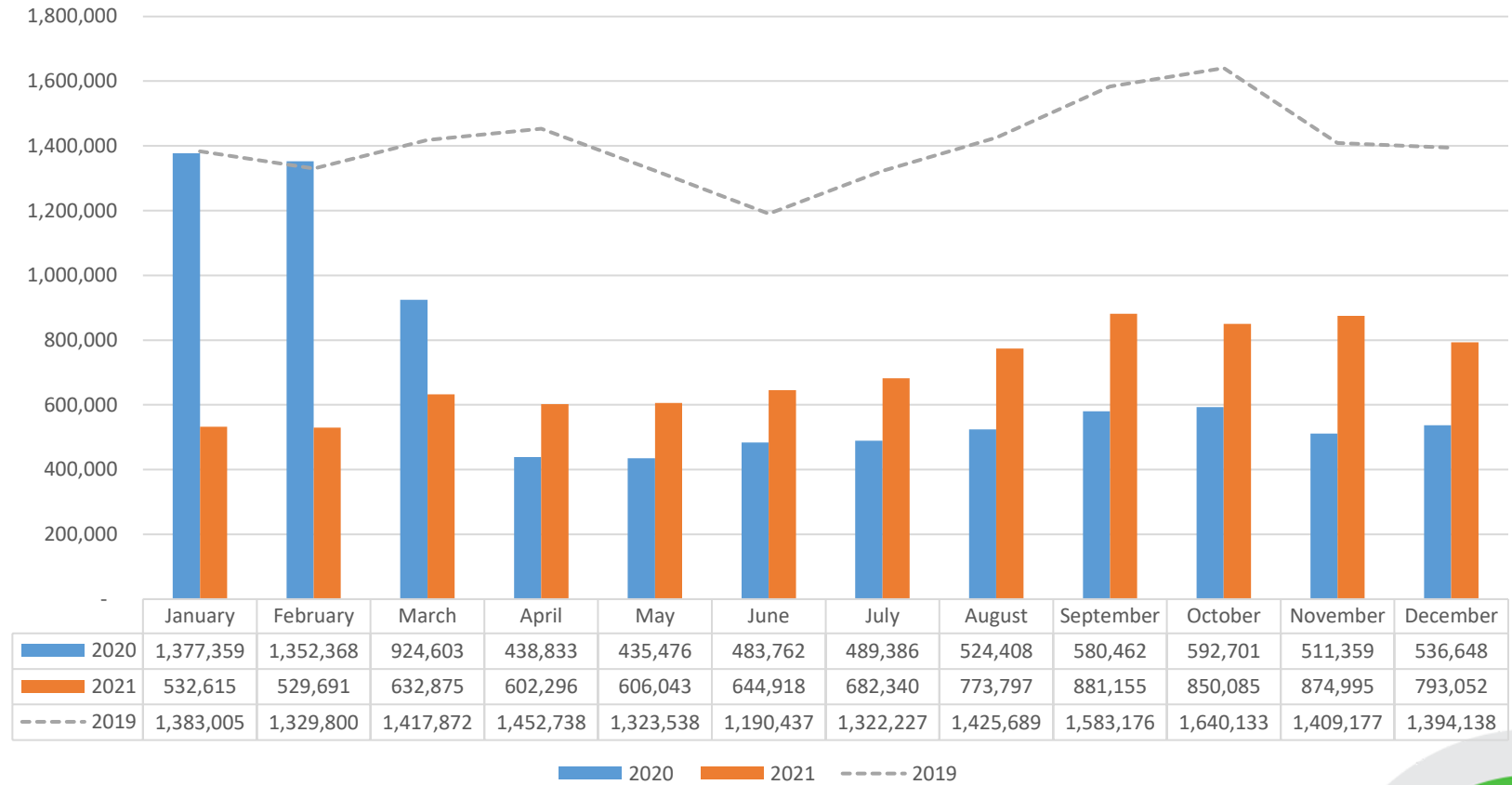


Mode	Jan - Dec 2020	Jan - Dec 2021	% Change
Bus	12,142,866	12,310,065	1.3%

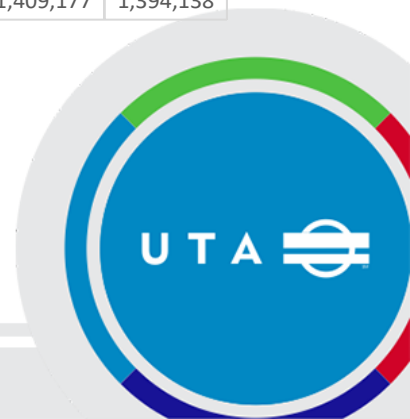


Ridership Report

Light Rail Ridership (includes Street Car)

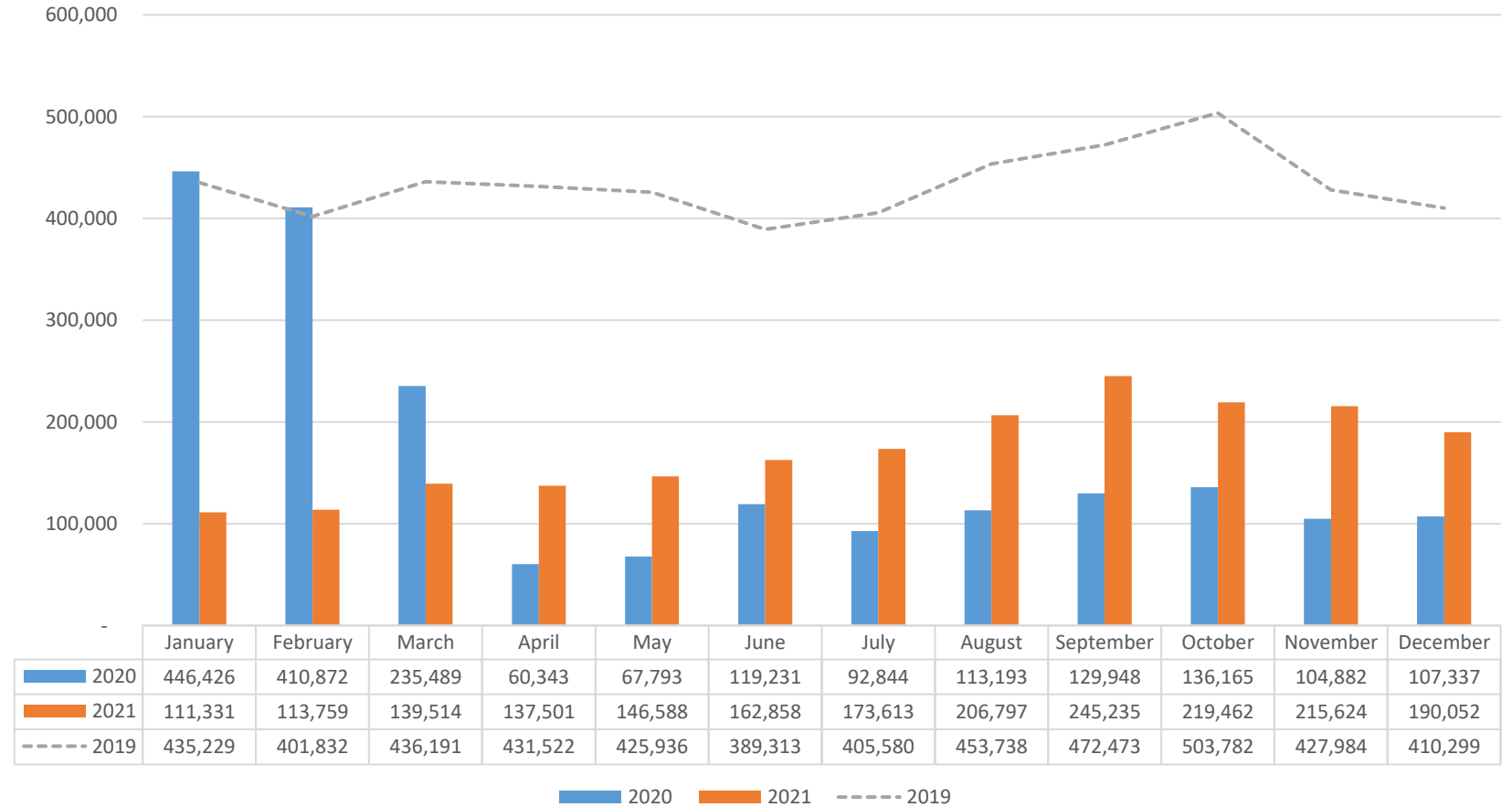


Mode	Jan - Dec 2020	Jan - Dec 2021	% Change
Light Rail	8,247,365	8,403,863	1.90%



Ridership Report

Commuter Rail Ridership



Mode	Jan - Dec 2020	Jan - Dec 2021	% Change
Commuter Rail	2,024,523	2,062,333	1.87%



Free Fare Days, Tuesday 12/21 and Wednesday 12/22

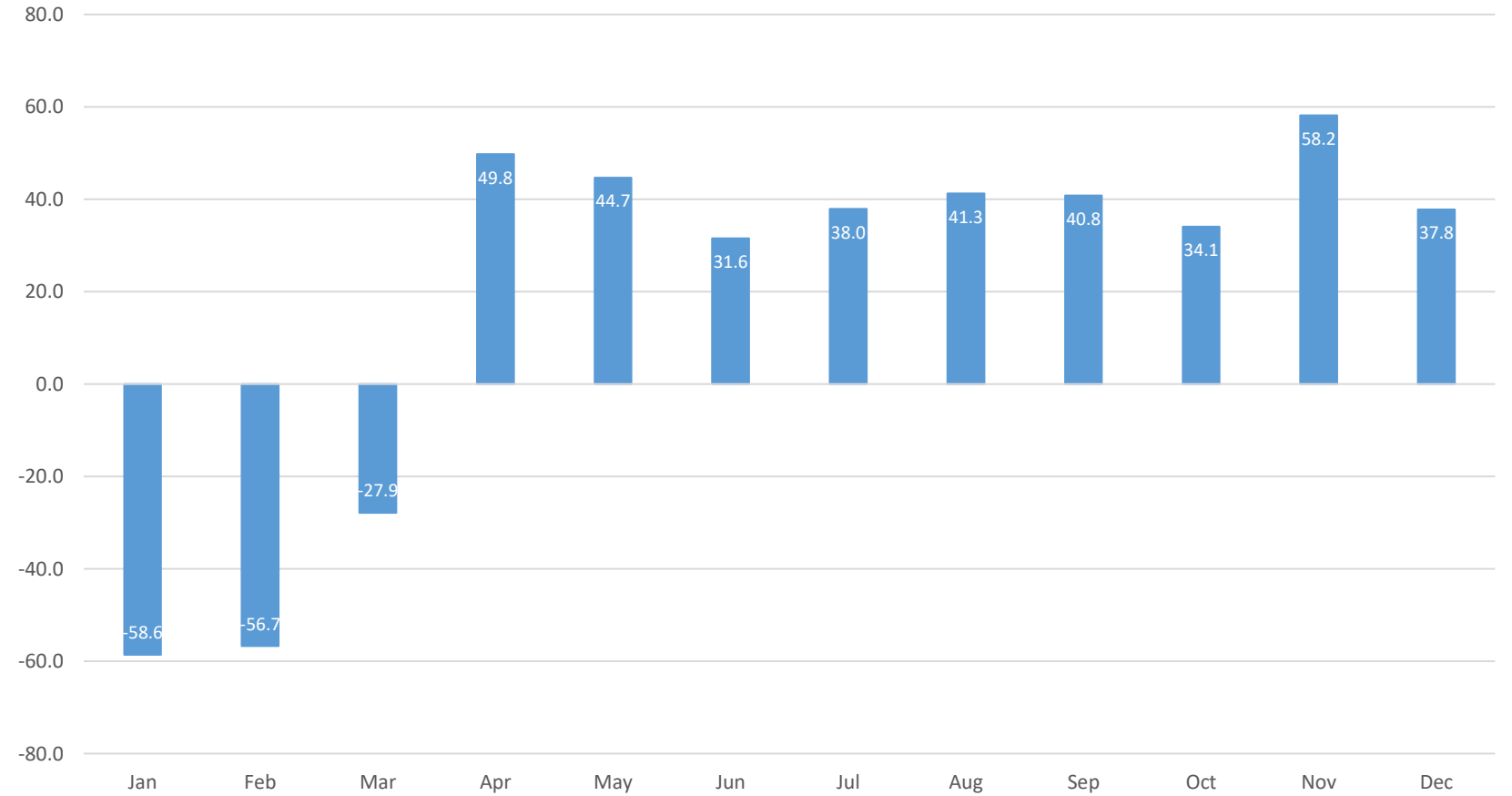
- FrontRunner has seen the highest ridership impact (14%) compared to other modes followed by paratransit (8%). Both of these modes have higher fares and are perceived to have higher values from customers' perspectives.
- Trax and Fixed Route Bus has seen a decrease due to other unknown factors in the current transit marketplace.

	(A) Free Fare Days Average Daily Ridership	(B) Base Base (Avg of 3 previous weekdays)	(C) % Free Fare Ridership Impact (no holiday pattern adjustment)	(D) Holiday Ridership Pattern Adjustment (Previous Year Holiday % drop compare to previous 3 weekdays)	(E) = (C) - (D) Net Free Fare Ridership Impact Estimate with Holiday Ridership Pattern Incorporated
FrontRunner	8,392	8,015	4.69%	-9.58%	14.2%
Fixed Route Bus	39,845	41,909	-4.92%	-2.98%	-1.9%
Trax	27,457	28,677	-4.26%	-0.61%	-3.6%
Paratransit	1,094	1,116	-2.02%	-10.2%	+8.2%



Ridership Report

Monthly % Difference from Previous Year



Questions?

