

UTA Local Advisory Council Meeting

May 6, 2026

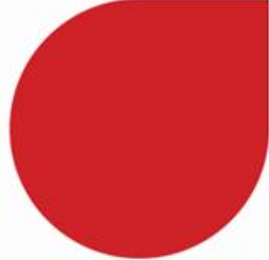
To view the meeting remotely, you may join through the UTA Public Meeting Portal or Zoom.

To view the meeting through the Public Meeting Portal: <https://rideuta.legistar.com/Calendar.aspx>

To view the meeting live on Zoom, register at:

https://bit.ly/UTA_LAC_05-06-26





UTA Local Advisory Council Meeting

May 6, 2026

CALL TO ORDER AND OPENING REMARKS



PLEDGE OF ALLEGIANCE





Agenda Item 2.



SAFETY FIRST MINUTE



PUBLIC COMMENT

- Live comments are limited to 3 minutes per commenter
- One person's time may not be used to extend another person's time
- Live comments may be heard from in-person attendees as well as Zoom attendees
- For comments via Zoom, use the “raise hand” function in Zoom to indicate you would like to make a comment
- Public comment was solicited prior to the meeting through alternate means, including email, telephone, and the UTA website
- Any comments received through alternate means were distributed to the body for review in advance of the meeting

PUBLIC COMMENT

3:00

- Please state your name for the record
 - Limit comments to 3 minutes

CONSENT



Consent Agenda

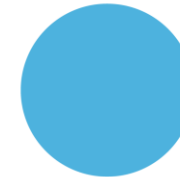
- a. Approval of the February 18, 2026 Local Advisory Council Meeting Minutes
 - b. Audit Committee Report
-

Recommended Action (by acclamation)

Motion to approve the consent agenda.



DISCUSSION ITEMS



Open Dialogue with the Board of Trustees



FrontRunner 2X Program



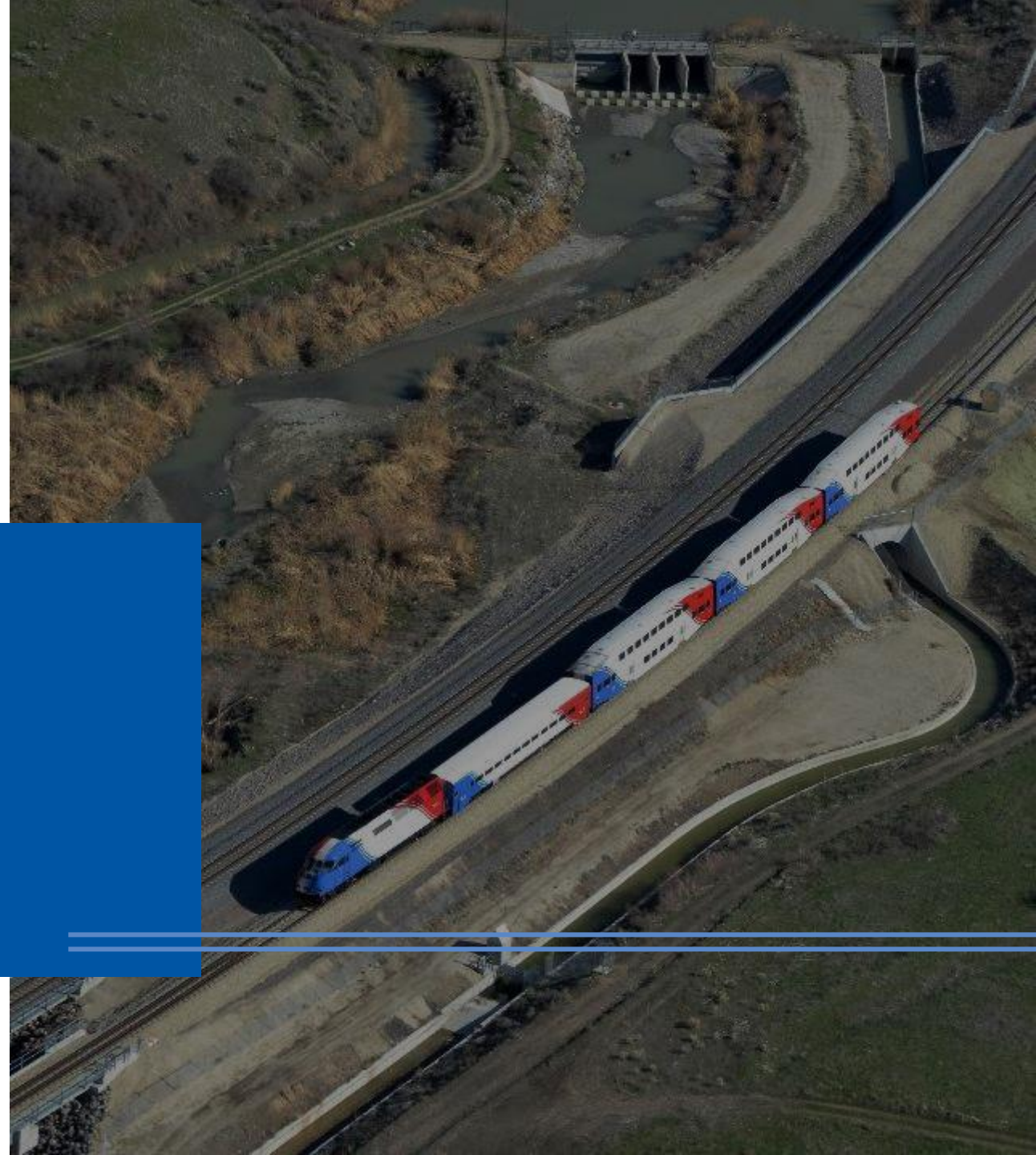
FRONTRUNNER 2X

UTA  

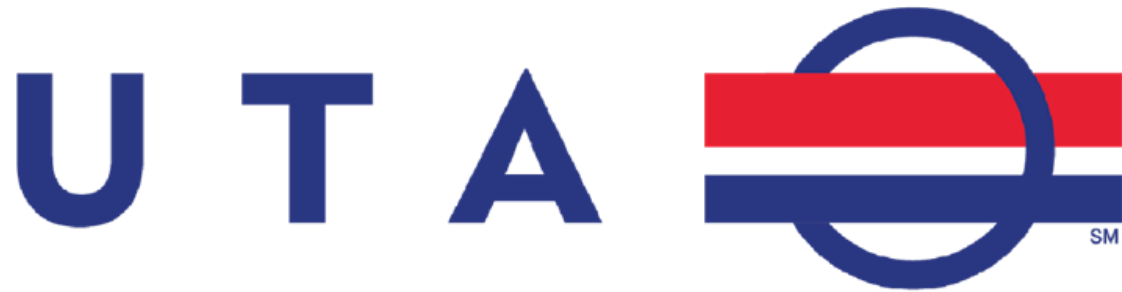
Local Advisory Council

May 6, 2026

Agenda Item 6. b.



Project Team



Why Strategic Double Tracking?



Project Purpose



- Ridership is at 90% capacity in the peak hour peak direction
- Double (2X) train frequency on the existing FrontRunner corridor to reduce congestion and increase ridership



Project Benefits



Increased Frequency
(15-minute peak, 30-minute off peak)



Increased Ridership
(53% increase)



Improved Reliability



Increased Choice
(17% faster than I-15 by 2050)



Supports Economic Development

FrontRunner 2X Improvements



11 Double Track Sections



1 New Station



1 Track Realignment

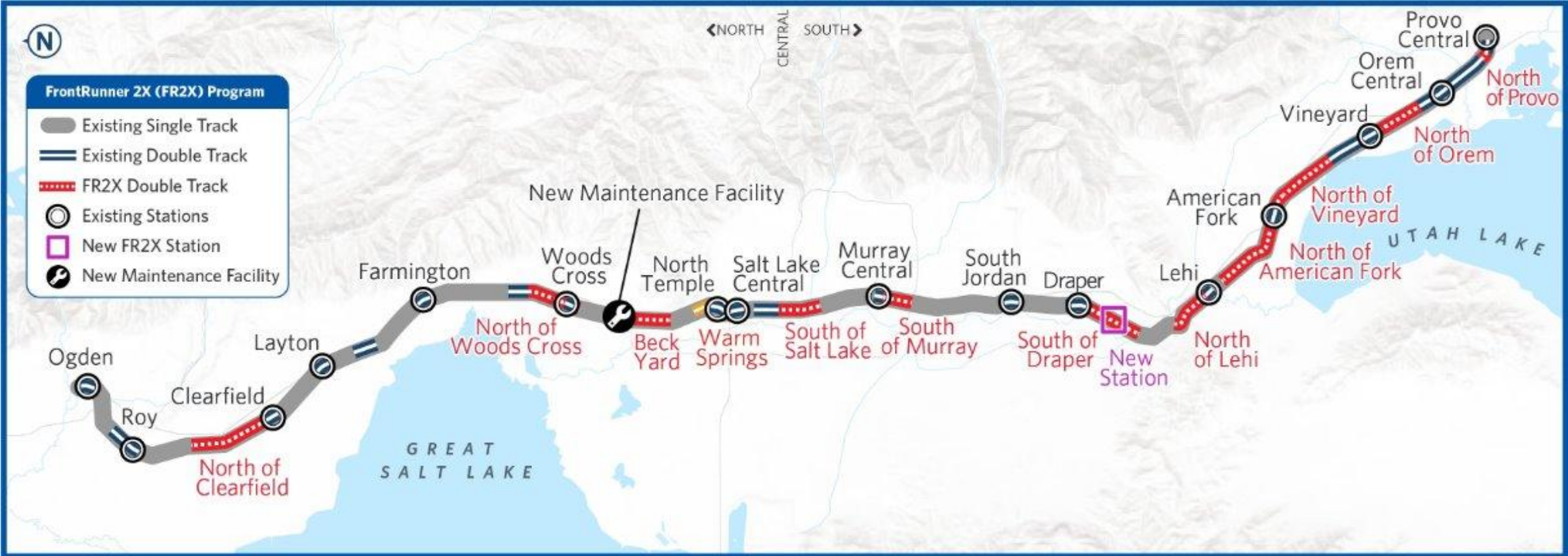


10 New Trainsets



Maintenance Facility

Project Map



Bluffdale Station

Future FrontRunner
Station



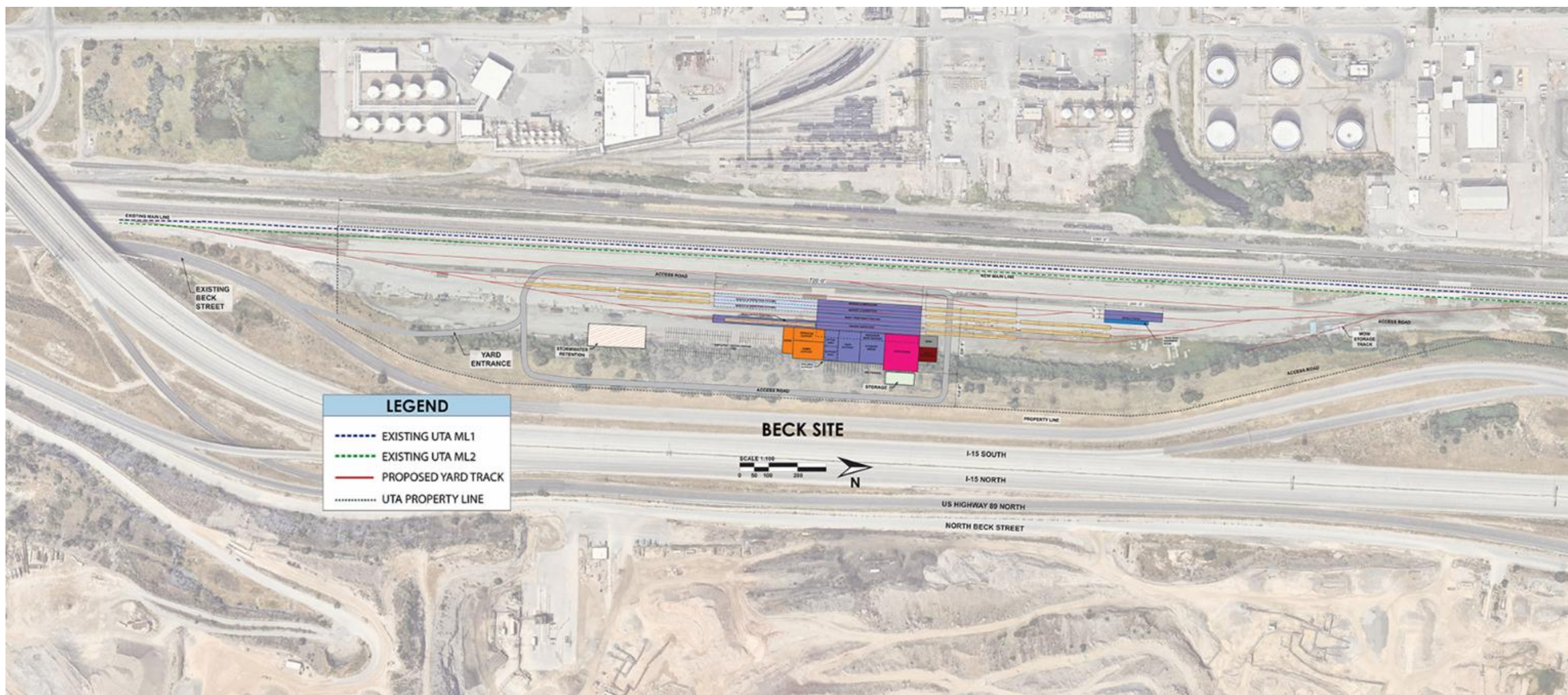
 THE POINT

FRONTRUNNER 2X

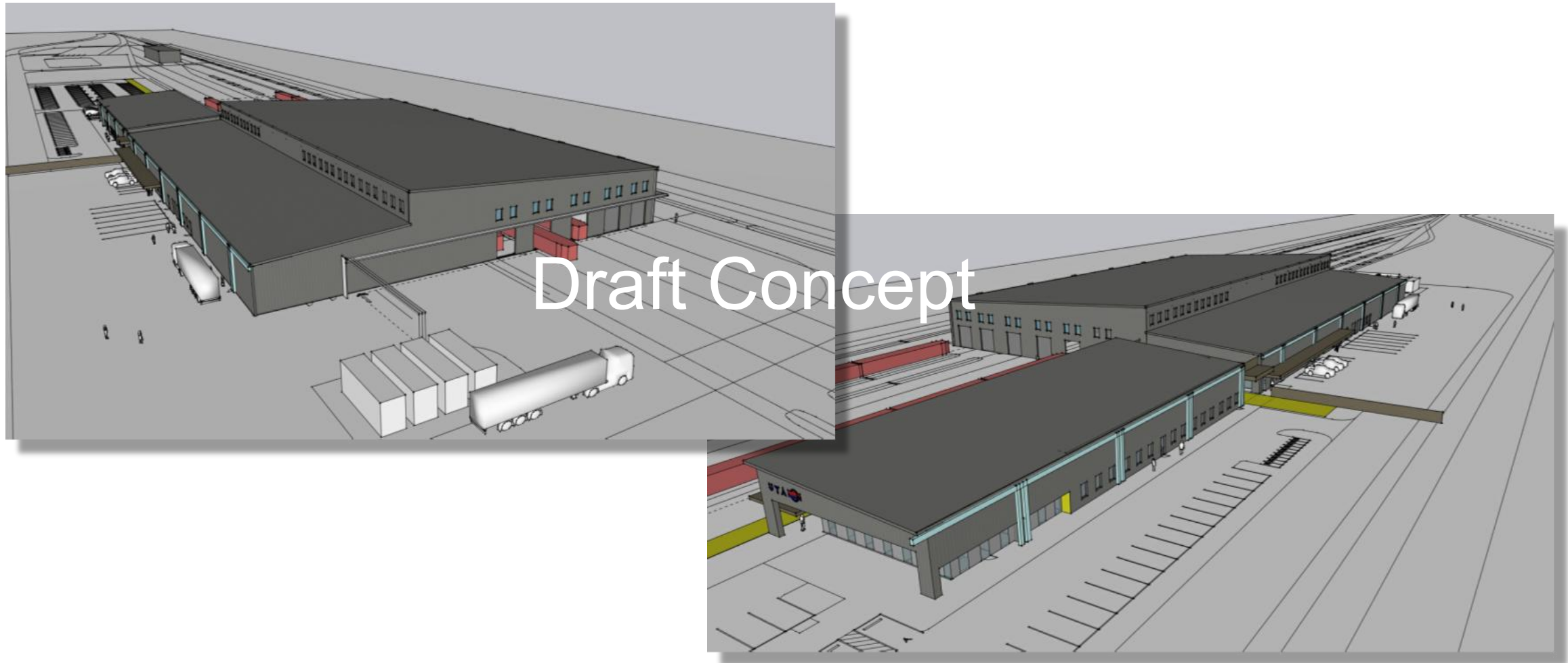
FrontRunner Bluffdale Station



Beck Street Maintenance Facility



Beck Street Maintenance Facility

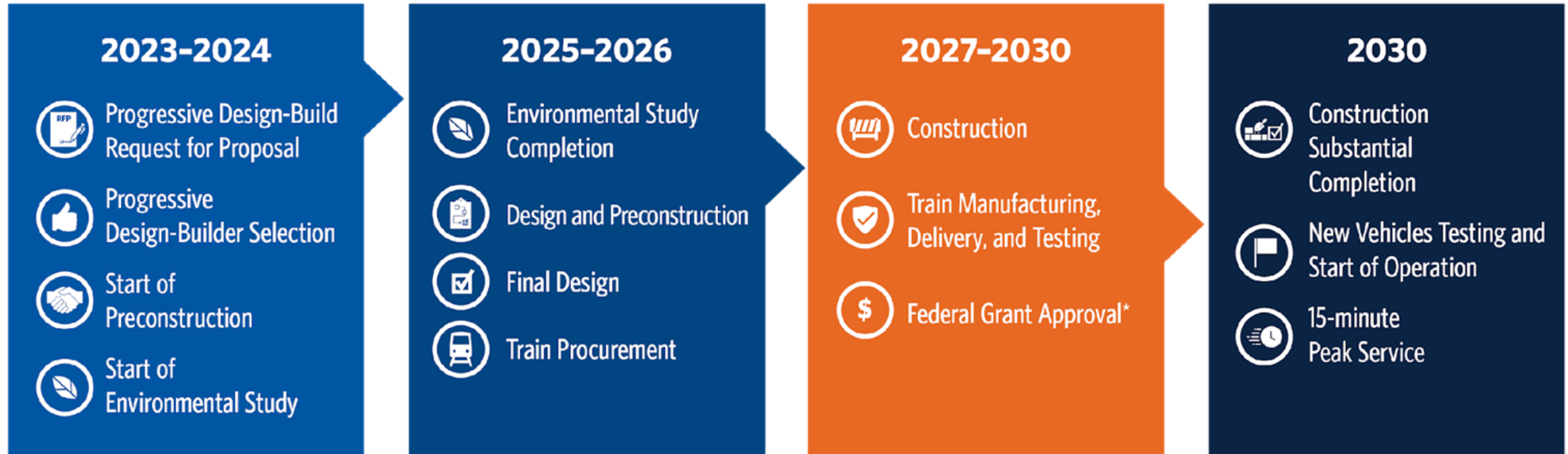


Vehicles

- Procuring Diesel Multiple Unit (DMU) vehicles aligned with UTA's FrontRunner Forward vision for more frequent and agile service



Project Timeline



* Timeline and project details depend on federal funding and approval timelines.



FrontRunner 2X Cost & Funding

Estimate:
\$3.2 Billion

Committed State Funds:
\$845 Million

Federal Grant
**Federal Transit Administration (FTA)
Capital Investment Grant (CIG)**

Stay Informed

Website: FrontRunner2X.utah.gov

Email: FrontRunner2X@utah.gov

Phone: 888-882-0373



Supplemental Information



Improving Utah's Commuter Rail System
 The Utah Transit Authority (UTA) and the Utah Department of Transportation (UDOT) are partnering to add more capacity to the region's commuter rail system to support the transit demands of continued population and economic growth along the Wasatch Front. The FrontRunner 2X project will increase train frequency and travel reliability.



IMPROVEMENTS

| | | |
|---|-----------------------------------|----------------------------|
| 26.1 Miles of Added Double Track | 11 Double Track Sections | 1 Realigned Section |
| 10 New Trainsets | 1 New Maintenance Facility | 1 New Station |

RIDER BENEFITS

| | | |
|---|--|--------------------------------|
| 15 MIN. Peak Service Current: 30 min. | 30 MIN. All-Day Service Current: 60 min. | 53% Ridership Increase* |
|---|--|--------------------------------|

*Based on 2050 estimates

RIDERSHIP CAPACITY OVER 80% PER MONTH



BUDGET

- Total budget (~\$3.2 billion)
- USDOT Request (~\$2.4 billion)

FEDERAL GRANTS

- 9 USDOT* grants received | All projects:
 - ✓ on time
 - ✓ on budget
 - ✓ exceeded ridership expectations

*USDOT = U.S. Department of Transportation

TIMELINE



To learn more about FrontRunner 2X, please visit frontrunner2x.utah.gov | V1.2 Last Updated April 9, 2026

INVESTING IN UTAH'S FUTURE

Continuing investments in transit are necessary to support our region's rapid growth and expand access to schools, jobs, care centers, parks, and essential services for current and future residents.*
 *UTA Long-range Transit Plan 2023-2050

| | | |
|--|---|---|
| FREQUENCY 2x the service 17% faster than I-15* *Based on 2050 estimates | CONNECTING FAMILIES AND COMMUNITIES Top 5 nationally in: Birth Rates Marriage Rates *According to the 2023 U.S. Census Bureau, American Community Survey | CLEAN & SAFE Continue to provide clean, safe transit throughout the Wasatch Front |
| ECONOMIC DEVELOPMENT The new Bluffdale Station is strategically located to serve the Point of the Mountain development, which includes 3,300 residential units and 2.6 million square feet of commercial space | RETURN ON INVESTMENT \$1/\$5 Every \$1 invested in public transit generates \$5 of economic activity* *According to the American Public Transportation Association | GOODS AND SERVICES \$9.6B/year Amount generated in goods and services per year due to time and mileage savings* *According to the UTA 2023 Economic Report |

MEETING UTAH'S TRANSPORTATION NEEDS

FrontRunner 2X is Essential for Utah's Robust Growth

- +1.6 million residents statewide by 2050
- +1.1 million residents along Wasatch Front by 2050 (70% of Utah's population growth)
- Two-thirds statewide job growth will be in Salt Lake and Utah counties in the Wasatch Front*
- Utah is the 4th highest state population growth by percent 2020-2024**
- The FrontRunner 2X project will directly support the successful preparation and delivery of the 2034 Olympic Games, as well as post Games benefits including increased skier days, hospitality, visitor spending, etc.

*According to the Kern C. Gardner Institute, 2022
 **U.S. Census Bureau

ADJOURN

