

Financial Report - October 2024



Monthly Operating Financial Report October 2024

December 18, 2024



Utah Transit Authority

Board Dashboard: Oct 31, 2024

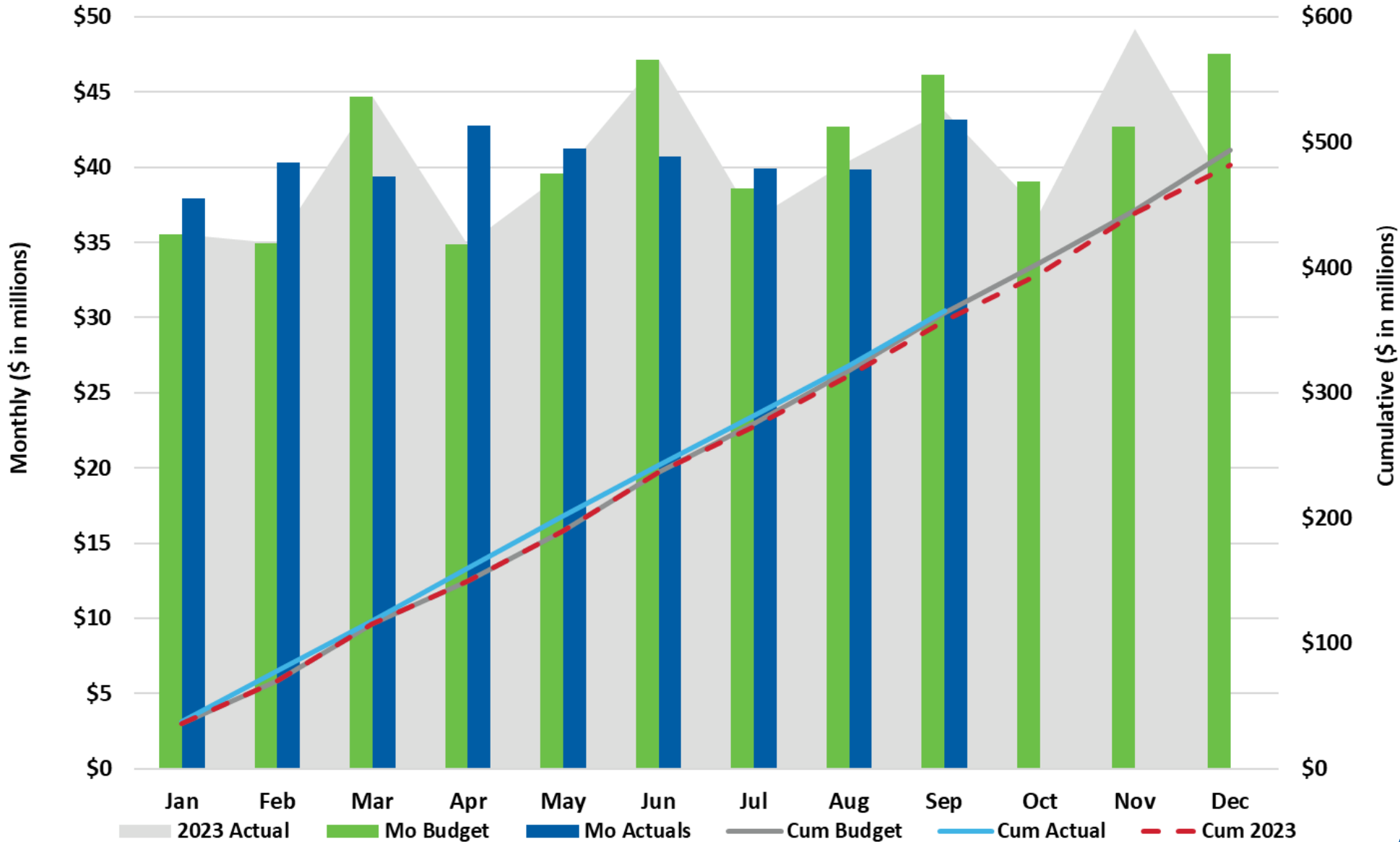
Financial Metrics	Oct Actual	Oct Budget	Fav / (Unfav)	%	YTD Actual	YTD Budget	Fav / (Unfav)	%
Sales Tax (Sep '24 mm \$)	\$ 43.2	\$ 46.2	\$ (2.97)	● -6.4%	\$ 365.3	\$ 364.3	\$ 0.99	● 0.3%
Fare Revenue (mm)	\$ 3.5	\$ 3.4	\$ 0.04	● 1.1%	\$ 33.3	\$ 31.1	\$ 2.24	● 7.2%
Operating Exp (mm)	\$ 35.4	\$ 36.1	\$ 0.73	● 2.0%	\$ 344.0	\$ 353.8	\$ 9.79	● 2.8%
Subsidy Per Rider (SPR)	\$ 8.20	\$ 10.04	\$ 1.84	● 18.3%	\$ 9.13	\$ 10.78	\$ 1.65	● 15.3%
UTA Diesel Price (\$/gal)	\$ 2.60	\$ 4.03	\$ 1.43	● 35.5%	\$ 2.63	\$ 4.03	\$ 1.40	● 34.7%
Operating Metrics	Oct Actual	Oct-23	F / (UF)	%	YTD Actual	YTD 2023	F / (UF)	%
Ridership (mm)	3.90	3.43	0.5	● 13.5%	34.03	29.20	4.8	● 16.5%
Energy Cost by Type (Monthly Avg YTD)								
	Diesel Bus (Cost per Mile)				\$ 0.53			
	Diesel CR (Cost per Mile)				\$ 4.49			
	Unleaded Gas (Cost per Mile)				\$ 0.38			
	CNG (Cost per Mile)				\$ 0.37			
	Bus Propulsion Power (Cost per Mile)				\$ 0.59			
	TRAX Propulsion Power (Cost per Mile)				\$ 0.87			

"Sales Tax" lists the amount of sales tax revenue received for the month listed in bold. All other data reflects the month listed in the table title.

Agenda Item 6.b.

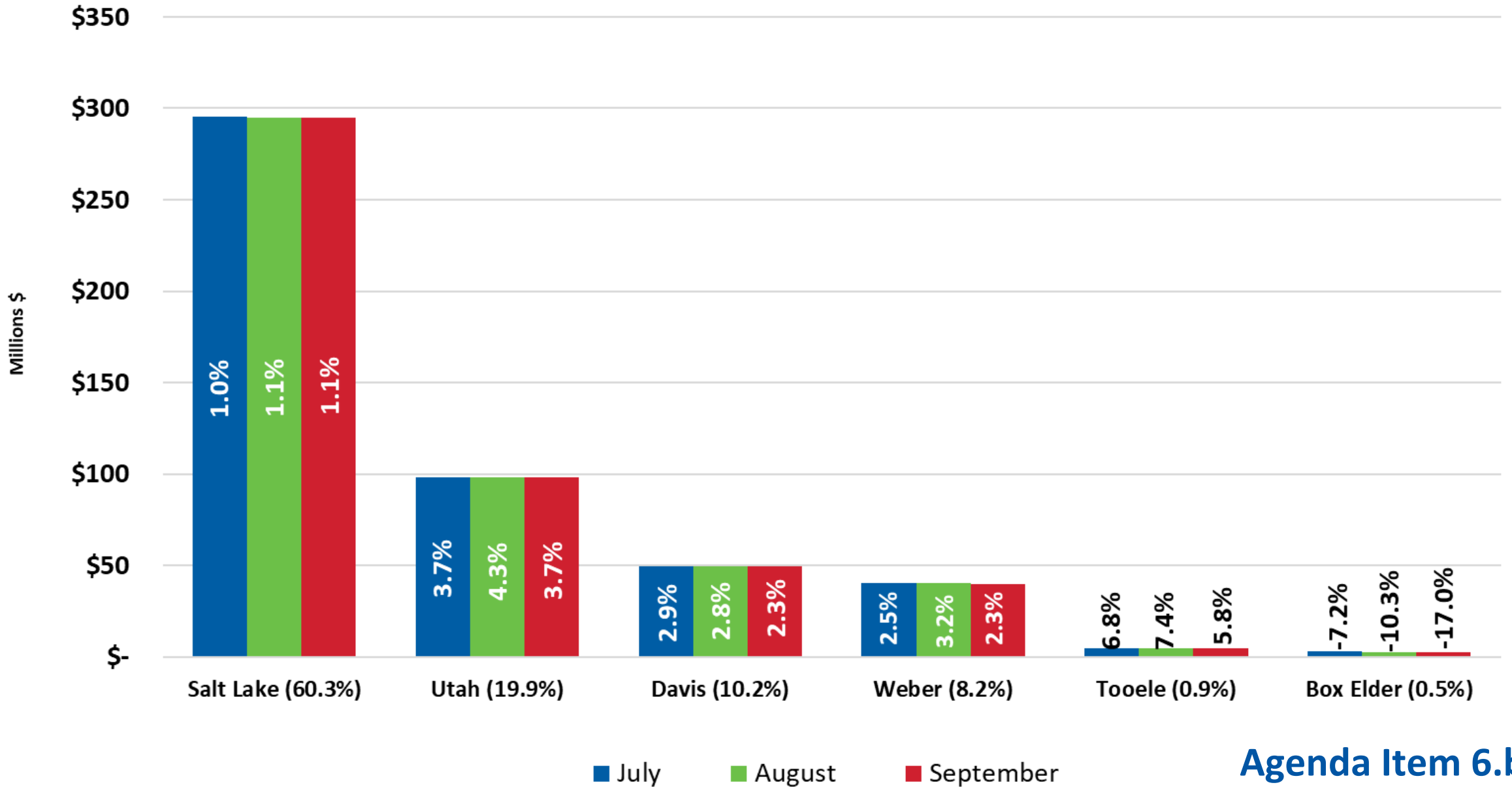
2024 Sales Tax

September YTD Variance \$1.0M / 0.3% Above Budget



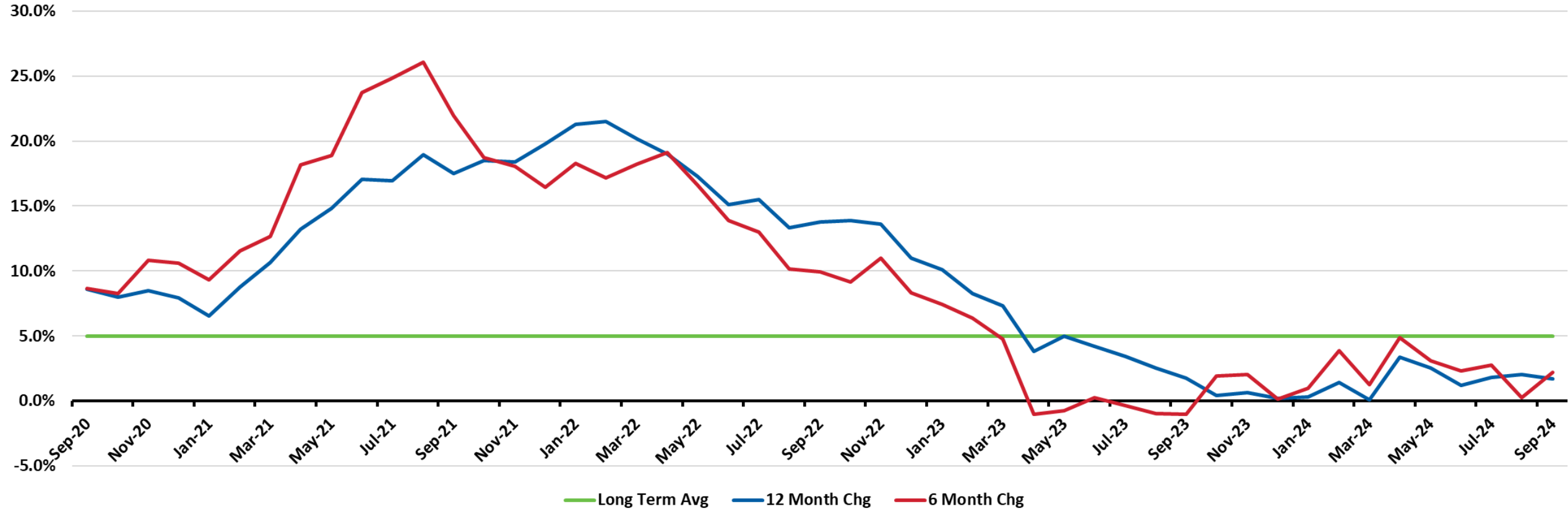
Sales Tax Collections

Percentage Change for 12 months ended September 30, 2024



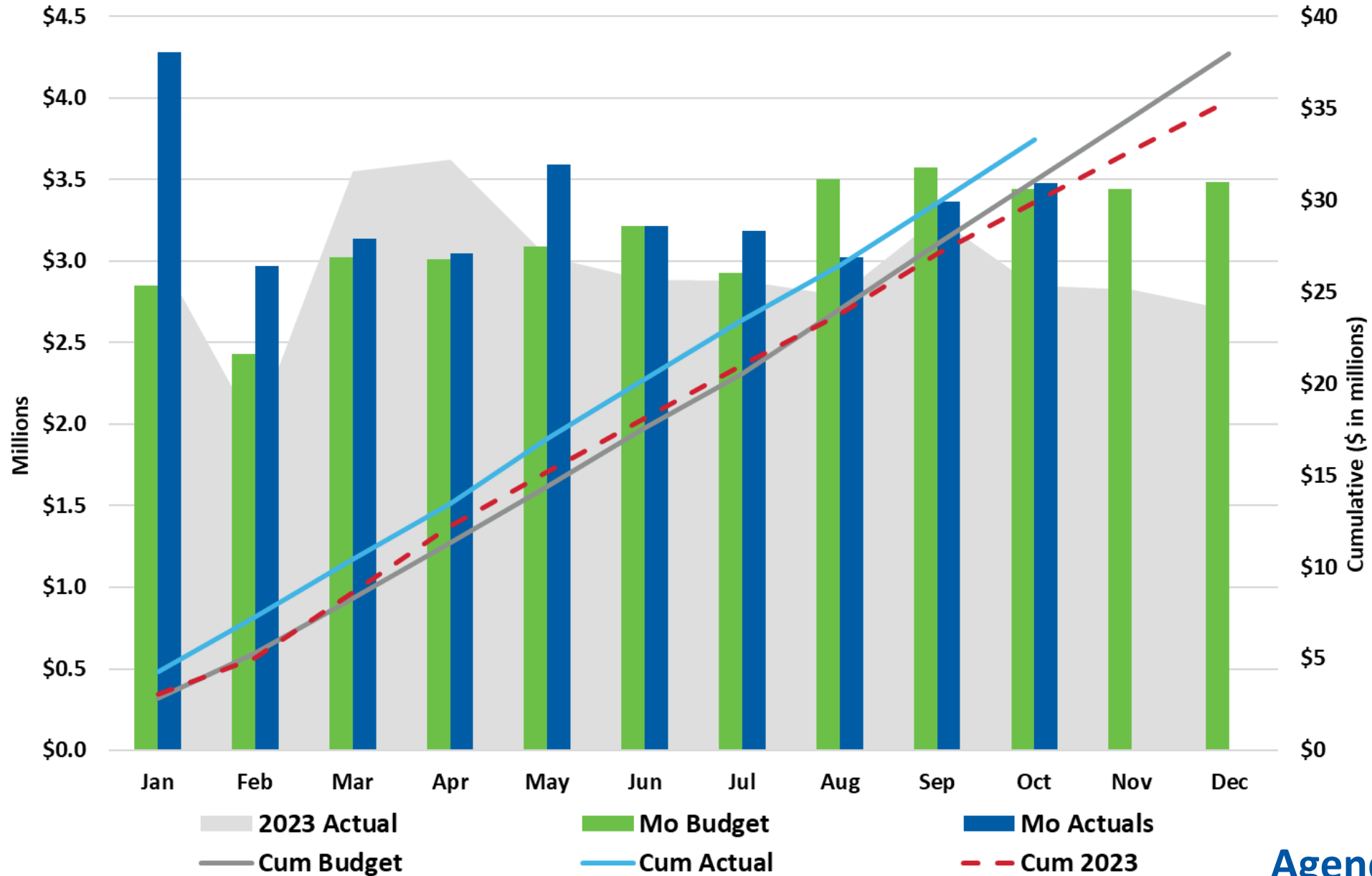
Agenda Item 6.b.

UTA Sales Tax Growth 2020 - 2024



2024 Passenger Revenue

Oct YTD \$2.2M / 7.2% > Budget



Agenda Item 6.b.

FTE Report: October 2024



FTE Report

Oct-24

	Budget	Oct-24 Budget vs. Actual			Vacancy Rate		
		Actual	Variance	Vacancy Rate	Prior Month	Start of Year	Prior Year
Administrative FTE							
Admin Depts	633.9	606.0	27.9	4.4%	5.0%	7.1%	6.3%
Operating Depts	384.0	372.5	11.5	3.0%	3.0%	2.5%	4.2%
Subtotal	1,017.9	978.5	39.4	3.9%	4.3%	5.4%	5.5%

	Budget	Vacancy			Vacancy Rate	Start of Year	Prior Year
		Actual	Variance	Rate			
Bargaining Unit FTE							
Admin Depts	47.0	78.0	-31.0	-66.0%	-61.7%	-54.8%	-126.2%
<i>Operating Modes</i>							
Bus	1078.0	1,145.0	-67.0	-6.2%	-6.1%	3.5%	6.0%
Light Rail	285.0	286.0	-1.0	-0.4%	-0.4%	-4.9%	0.7%
Commuter Rail	103.0	112.0	-9.0	-8.7%	-4.9%	3.9%	1.9%
Riverside	157.0	158.5	-1.5	-1.0%	2.9%	4.7%	7.2%
Asset Mgt	186.0	165.0	21.0	11.3%	14.0%	11.4%	13.0%
Subtotal	1,856.0	1,944.5	-88.5	-4.8%	-3.8%	1.8%	0.6%

Total FTE	2,873.9	2,923.0	-49.1	-1.7%	-0.9%	3.0%	2.3%
------------------	----------------	----------------	--------------	--------------	--------------	-------------	-------------

Agenda Item 6.b.

October 2024 YTD Financial Results



OPERATING FINANCIALS

October 2024 YTD

FISCAL YEAR 2024 Dollars In Millions	YEAR-TO-DATE RESULTS					
	Prior Year Actual	Current Year				
		Actual	Budget	Variance		
Revenue						
Sales Tax (Oct accrual)	\$ 395.1	\$ 404.7	\$ 403.4	\$ 1.3	0.3%	
Fares	29.9	33.3	31.1	2.2	7.2%	
Federal	59.5	38.0	72.0	(34.0)	-47.2%	
Other *	61.8	65.1	18.7	46.4	248.5%	
TOTAL REVENUE	\$ 546.3	\$ 541.1	\$ 525.1	\$ 15.9	3.0%	
Expense						
Salary/Wages	\$ 144.6	\$ 160.8	\$ 156.7	\$ (4.1)	-2.6%	
Overtime	12.2	11.8	11.3	(0.5)	-4.2%	
Fringe Benefits	75.9	85.3	83.7	(1.6)	-1.9%	
Total Compensation	\$ 232.8	\$ 257.8	\$ 251.6	\$ (6.2)	-2.5%	
Services	30.1	31.4	37.5	6.1	16.3%	
Parts	19.8	21.0	21.6	0.6	2.9%	
Fuel	24.6	22.4	29.7	7.2	24.4%	
Utilities	6.3	5.7	6.3	0.6	10.1%	
Other	11.4	15.5	17.6	2.1	11.9%	
Capitalized Cost	(10.1)	(9.8)	(10.5)	(0.7)	6.9%	
TOTAL EXPENSE	\$ 314.9	\$ 344.0	\$ 353.8	\$ 9.8	2.8%	
Debt Service	65.7	72.1	69.4	(2.7)	-3.8%	
Contrib. Capital/Reserves	\$ 164.2	\$ 125.0	\$ 101.9	\$ 23.1	22.6%	

*Does not include Sale of Assets (\$727.4K favorable) or
Non-Cash items

Favorable/(Unfavorable)

Agenda Item 6.b.

Questions?



Capital Program Update October 2024

December 18, 2024



**Utah Transit Authority
Capital Program: October 31, 2024**

Chief Office	Oct Actual	Oct Budget	Variance	%	YTD Actual	YTD Budget	Variance	%
People	\$ 5,305	\$ 94,000	\$ 88,695	● 94.4%	\$ 1,855,488	\$ 2,147,000	\$ 291,512	● 13.6%
Executive Director	82,274	152,000	69,726	● 45.9%	1,343,478	1,925,000	581,522	● 30.2%
Planning & Engagement	322,504	569,000	246,496	● 43.3%	2,954,983	4,733,000	1,778,017	● 37.6%
Operations	990,214	550,000	(440,214)	● -80.0%	3,560,703	4,393,000	832,297	● 18.9%
Enterprise Strategy	410,655	643,000	232,345	● 36.1%	3,829,014	4,999,000	1,169,986	● 23.4%
Finance	825,410	2,673,000	1,847,590	● 69.1%	14,519,171	25,025,000	10,505,829	● 42.0%
Capital Services	10,188,934	17,536,000	7,347,066	● 41.9%	91,640,001	116,804,000	25,163,999	● 21.5%
Total	\$ 12,825,295	\$ 22,217,000	\$ 9,391,705	● 42.3%	\$ 119,702,837	\$ 160,026,000	\$ 40,323,163	● 25.2%

UTAH TRANSIT AUTHORITY



October YTD Capital Spend



Top 10 Project Spend YTD October 2024

Project	YTD Actual Cost
Mid-Valley Connector	\$ 14,148,533
Paratransit Replacements	9,917,742
Fares Systems Replacement Program	7,023,612
Light Rail Vehicle Rehab	6,862,113
PSS Component Replacement	\$ 6,395,304
Replacement Non-Revenue Support Vehic	5,903,135
Rail Car Purchase	5,000,000
Replacement Buses	4,558,744
Rail Replacement Program	3,558,039
Train Control Rehab & Replacement	2,937,814
Total	\$ 66,305,037



Questions

