

# Financial Report – April 2024



# Monthly Operating Financial Report

## April 2024

June 12, 2024



# Agenda Item 6.b.

## Utah Transit Authority

Board Dashboard: April 30, 2024

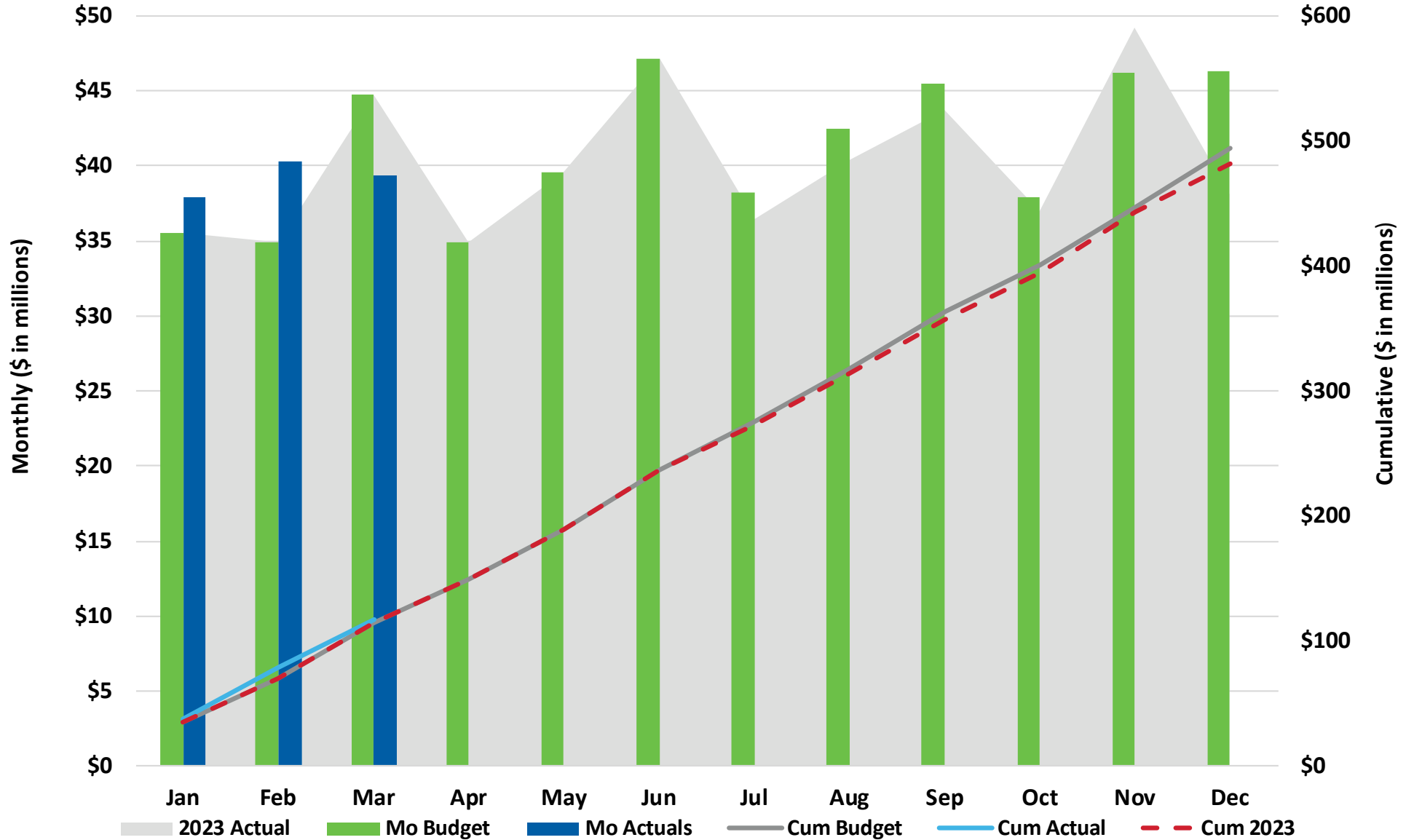
<b>Financial Metrics</b>	Apr Actual	Apr Budget	Fav / (Unfav)	%	YTD Actual	YTD Budget	Fav / (Unfav)	%
Sales Tax (Mar '24 mm \$)	\$ 39.4	\$ 44.7	\$ (5.31)	-11.9%	\$ 117.6	\$ 115.2	\$ 2.40	2.1%
Fare Revenue (mm)	\$ 3.0	\$ 3.0	\$ 0.04	1.2%	\$ 13.4	\$ 11.3	\$ 2.12	18.7%
Operating Exp (mm)	\$ 31.7	\$ 35.5	\$ 3.79	10.7%	\$ 129.3	\$ 141.7	\$ 12.36	8.7%
Subsidy Per Rider (SPR)	\$ 8.19	\$ 10.78	\$ 2.59	24.0%	\$ 8.68	\$ 10.78	\$ 2.10	19.5%
UTA Diesel Price (\$/gal)	\$ 2.59	\$ 4.03	\$ 1.44	35.6%	\$ 2.74	\$ 4.03	\$ 1.29	32.0%
<b>Operating Metrics</b>	Apr Actual	Apr-23	F / (UF)	%	YTD Actual	YTD 2023	F / (UF)	%
Ridership (mm)	3.50	2.69	0.8	30.1%	13.35	11.05	2.3	20.8%
<b>Energy Cost by Type (Monthly Avg YTD)</b>								
	<b>Diesel Bus</b> (Cost per Mile)				\$ 0.50			
	<b>Diesel CR</b> (Cost per Mile)				\$ 4.34			
	<b>Unleaded Gas</b> (Cost per Mile)				\$ 0.32			
	<b>CNG</b> (Cost per Mile)				\$ 0.26			
	<b>Bus Propulsion Power</b> (Cost per Mile)				\$ 0.91			
	<b>TRAX Propulsion Power</b> (Cost per Mile)				\$ 0.79			

"Sales Tax" lists the amount of sales tax revenue received for the month listed in bold. All other data reflects the month listed in the table title.

# Agenda Item 6.b.

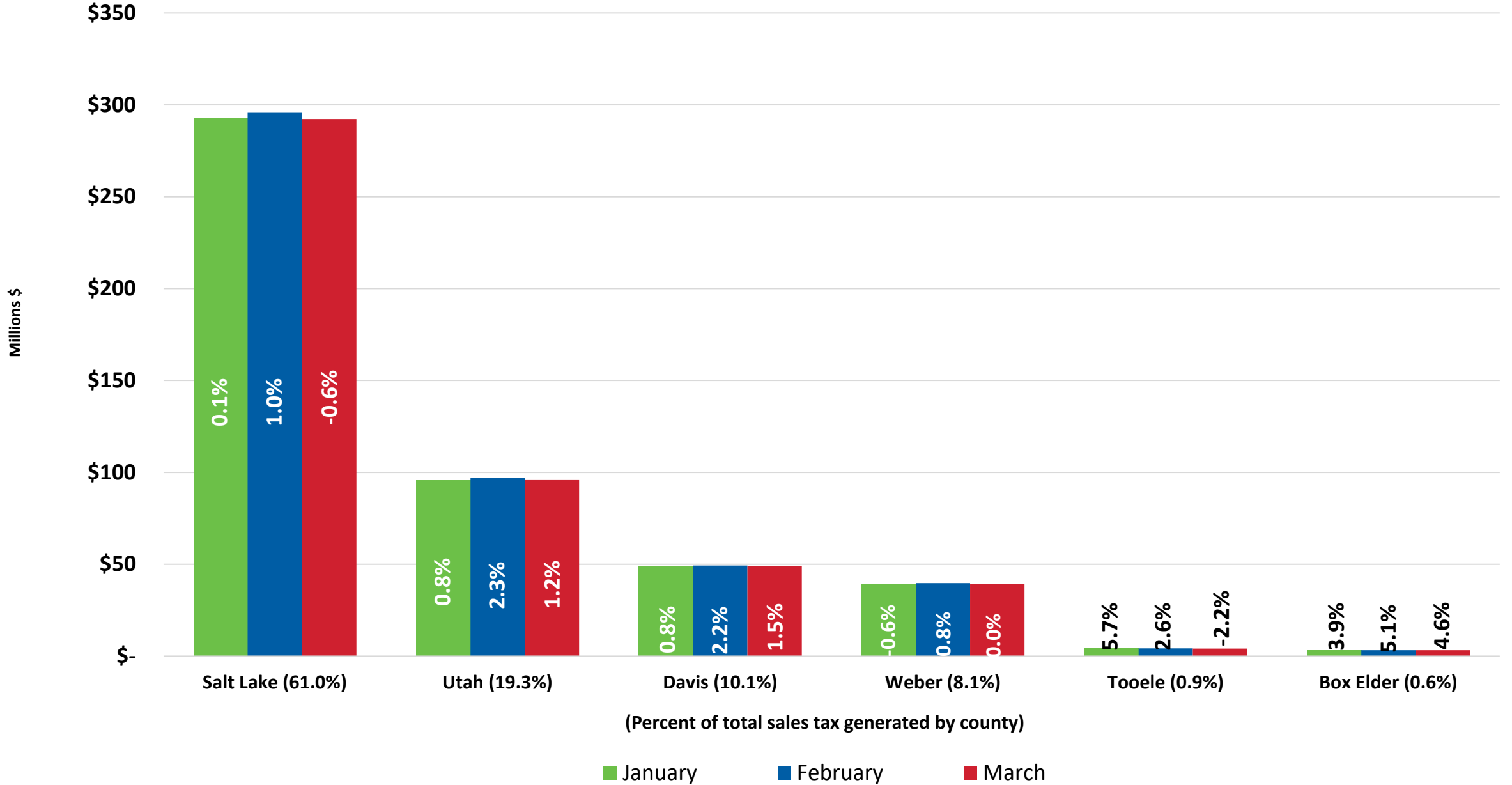
## 2024 Sales Tax

March YTD Variance \$2.4M Above Budget



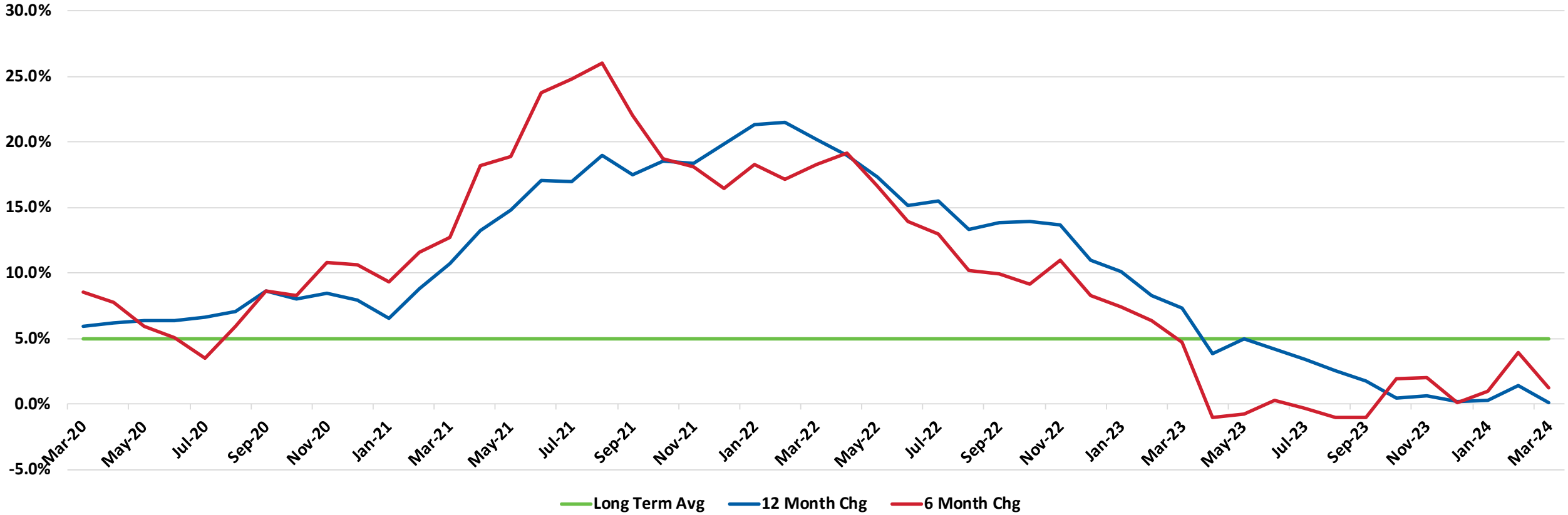
# Agenda Item 6.b.

## Sales Tax Collections Percentage Change for 12 months ended March 31, 2024



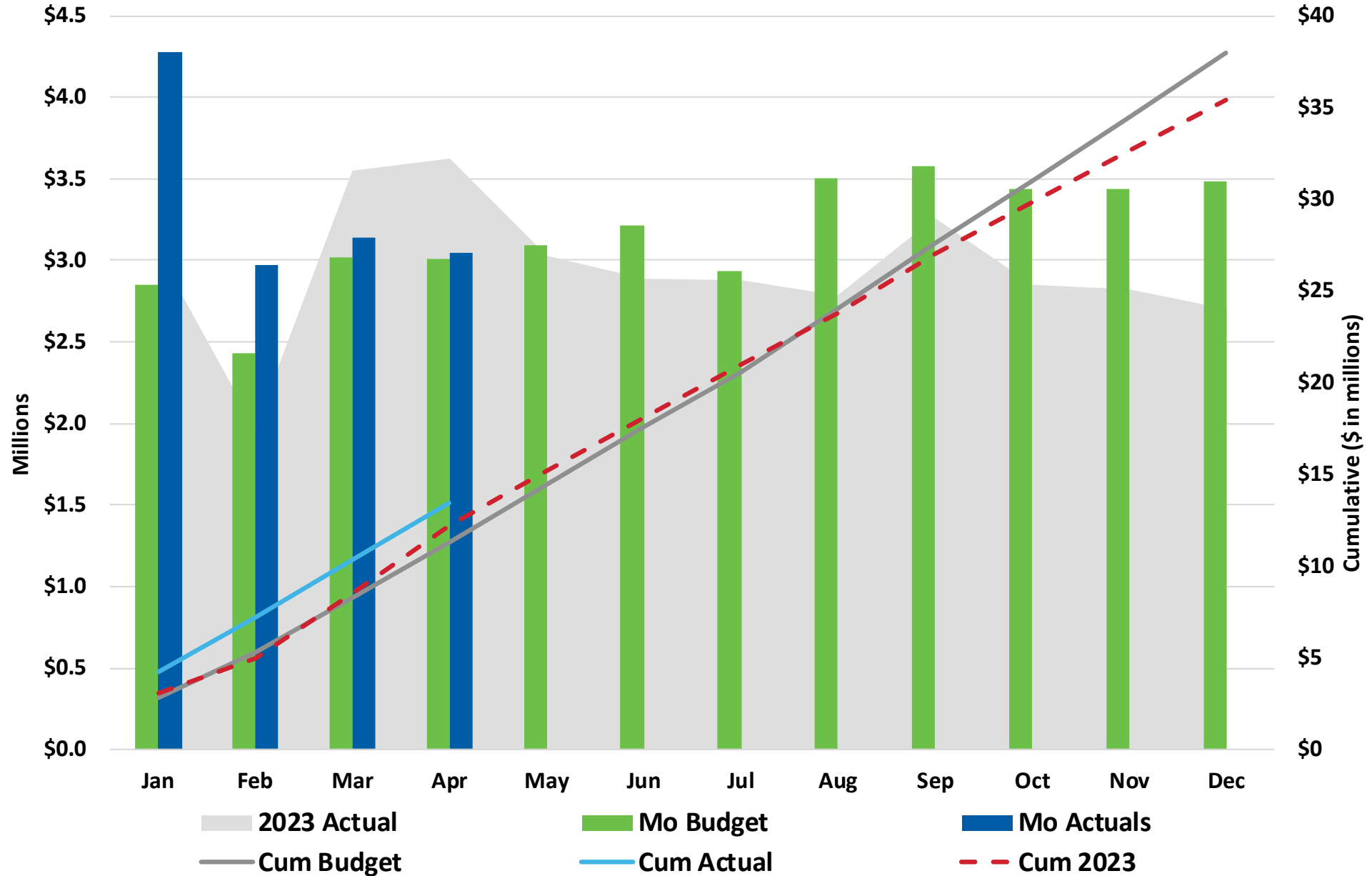
# Agenda Item 6.b.

## UTA Sales Tax Growth 2020 - 2024



# Agenda Item 6.b.

## 2024 Passenger Revenue April YTD \$2.1M > Budget



# FTE Report April 2024

	<b>FTE Report</b>	Apr-24
---	-------------------	--------

	Budget	Apr-24 Budget vs. Actual			Vacancy Rate		
		Actual	Variance	Vacancy Rate	Prior Month	Start of Year	Prior Year
<b>Administrative FTE</b>							
Admin Depts	633.9	606.5	27.4	4.3%	6.1%	7.1%	12.1%
Operating Depts	384.0	371.5	12.5	3.3%	3.1%	2.5%	6.2%
<b>Subtotal</b>	<b>1,017.9</b>	<b>978.0</b>	<b>39.9</b>	<b>3.9%</b>	<b>5.0%</b>	<b>5.4%</b>	<b>9.8%</b>

	Budget	Vacancy			Prior Month	Start of Year	Prior Year
		Actual	Variance	Rate			
<b>Bargaining Unit FTE</b>							
Admin Depts	47.0	88.5	-41.5	-88.3%	-83.0%	-54.8%	-83.6%
<i>Operating Modes</i>							
Bus	1,078.0	1,066.0	12.0	1.1%	1.7%	3.5%	13.5%
Light Rail	285.0	292.0	-7.0	-2.5%	-6.3%	-4.9%	5.6%
Commuter Rail	103.0	105.0	-2.0	-1.9%	-6.8%	3.9%	1.9%
Riverside	157.0	154.5	2.5	1.6%	2.2%	4.7%	8.2%
Asset Mgt	186.0	166.0	20.0	10.8%	10.8%	11.4%	11.4%
<b>Subtotal</b>	<b>1,856.0</b>	<b>1,872.0</b>	<b>-16.0</b>	<b>-0.9%</b>	<b>-1.2%</b>	<b>1.8%</b>	<b>8.9%</b>

<b>Total FTE</b>	<b>2,873.9</b>	<b>2,850.0</b>	<b>23.9</b>	<b>0.8%</b>	<b>1.0%</b>	<b>3.0%</b>	<b>9.2%</b>
------------------	----------------	----------------	-------------	-------------	-------------	-------------	-------------



**OPERATING FINANCIALS**

Apr 2024 YTD

FISCAL YEAR 2024 Dollars In Millions	YEAR-TO-DATE RESULTS					
	Prior Year Actual	Current Year				Variance
		Actual	Budget			
<b>Revenue</b>						
Sales Tax (Apr accrual)	\$ 150.8	\$ 157.8	\$ 150.1	\$ 7.7	5.1%	
Fares	12.2	13.4	11.3	2.1	18.7%	
Federal	0.1	0.0	24.0	(24.0)	-99.8%	
Other *	18.5	28.3	7.5	20.8	278.5%	
<b>TOTAL REVENUE</b>	<b>\$ 181.6</b>	<b>\$ 199.6</b>	<b>\$ 192.9</b>	<b>\$ 6.7</b>	<b>3.5%</b>	
<b>Expense</b>						
Salary/Wages	\$ 57.1	\$ 61.9	\$ 62.5	\$ 0.6	0.9%	
Overtime	5.1	4.5	4.6	0.0	0.9%	
Fringe Benefits	28.9	32.0	33.3	1.3	3.8%	
<b>Total Compensation</b>	<b>\$ 91.2</b>	<b>\$ 98.5</b>	<b>\$ 100.3</b>	<b>\$ 1.9</b>	<b>1.9%</b>	
Services	11.3	10.8	15.1	4.3	28.8%	
Parts	8.5	10.0	8.6	(1.4)	-16.2%	
Fuel	10.8	8.3	12.0	3.6	30.5%	
Utilities	3.1	2.7	2.7	(0.1)	-2.1%	
Other	3.8	3.5	7.2	3.7	51.6%	
Capitalized Cost	(4.3)	(4.5)	(4.2)	(0.3)	6.0%	
<b>TOTAL EXPENSE</b>	<b>\$ 124.5</b>	<b>\$ 129.3</b>	<b>\$ 141.7</b>	<b>\$ 12.4</b>	<b>8.7%</b>	
Debt Service	27.0	25.4	27.9	2.4	8.8%	
<b>Contrib. Capital/Reserves</b>	<b>\$ 30.1</b>	<b>\$ 44.9</b>	<b>\$ 23.4</b>	<b>\$ 21.5</b>	<b>91.8%</b>	

\*Does not include Sale of Assets (\$56.2K) or Non-Cash items

Favorable/(Unfavorable)