

Additional Service Discussion



Additional Service Definitions

- *“Baseline Service”* means regularly scheduled transit service provided by UTA or its contractors including bus, light rail, paratransit, innovative mobility, and commuter rail services.
- *“Event Service”* means additional services added to baseline service during an event that may increase ridership beyond the baseline service level.
- *“Sponsored Service”* means longer-term transit service provided by UTA pursuant to a sponsored service agreement that is funded in whole or in part by a third-party sponsor for the purpose of improving transit availability in a specific area.
- *“Charter Service”* Federal Transit Regulations information on next slide



Federal Transit Administration Charter Service Regulation

Charter Bus Service Regulations

FTA's Charter Service Regulations (49 CFR Part 604), which implement 49 U.S.C. 5323(d), protect private charter operators from unauthorized competition from FTA grant recipients. In essence, the charter regulations were implemented to ensure that transit agencies, subsidized with federal money, do not unfairly compete with privately owned bus companies. Under the charter rules, with limited exceptions, local transit agencies are restricted from operating chartered services.

Charter service means, but does not include demand response service to individuals:

- Transportation provided by a recipient at the request of a third party for the exclusive use of a bus or van for a negotiated price. The following features may be characteristic of charter service:
 - A third party pays the transit provider a negotiated price for the group;
 - Any fares charged to individual members of the group are collected by a third party;
 - The service is not part of the transit provider's regularly scheduled service, or is offered for a limited period of time; or
 - A third party determines the origin and destination of the trip as well as scheduling; or
- Transportation provided by a recipient to the public for events or functions that occur on an irregular basis or for a limited duration and:
 - A premium fare is charged that is greater than the usual or customary fixed route fare; or
 - The service is paid for in whole or in part by a third party.



Specials & Event Schedule for 2024

University of Utah school calendar: Semester class start & end dates, Spring & Fall breaks

UTA Holidays and service levels on those holidays

Major arenas/stadiums: Vivint Arena, Maverik Center, Rio Tinto Stadium, Smith's Ballpark, Abravanel Hall, Eccles Theater

Sports events: Football, Basketball, Baseball, Hockey, Gymnastics, Soccer

Temple Square events: Conference Center, Tabernacle, Christmas Lights

Salt Palace Conventions: Outdoor Retailers, DoTERRA, FanX, etc.

Parades: St. Patrick's, Pride, Days of '47, etc.

Marathons: Salt Lake Marathon, Race of the Cure, etc.

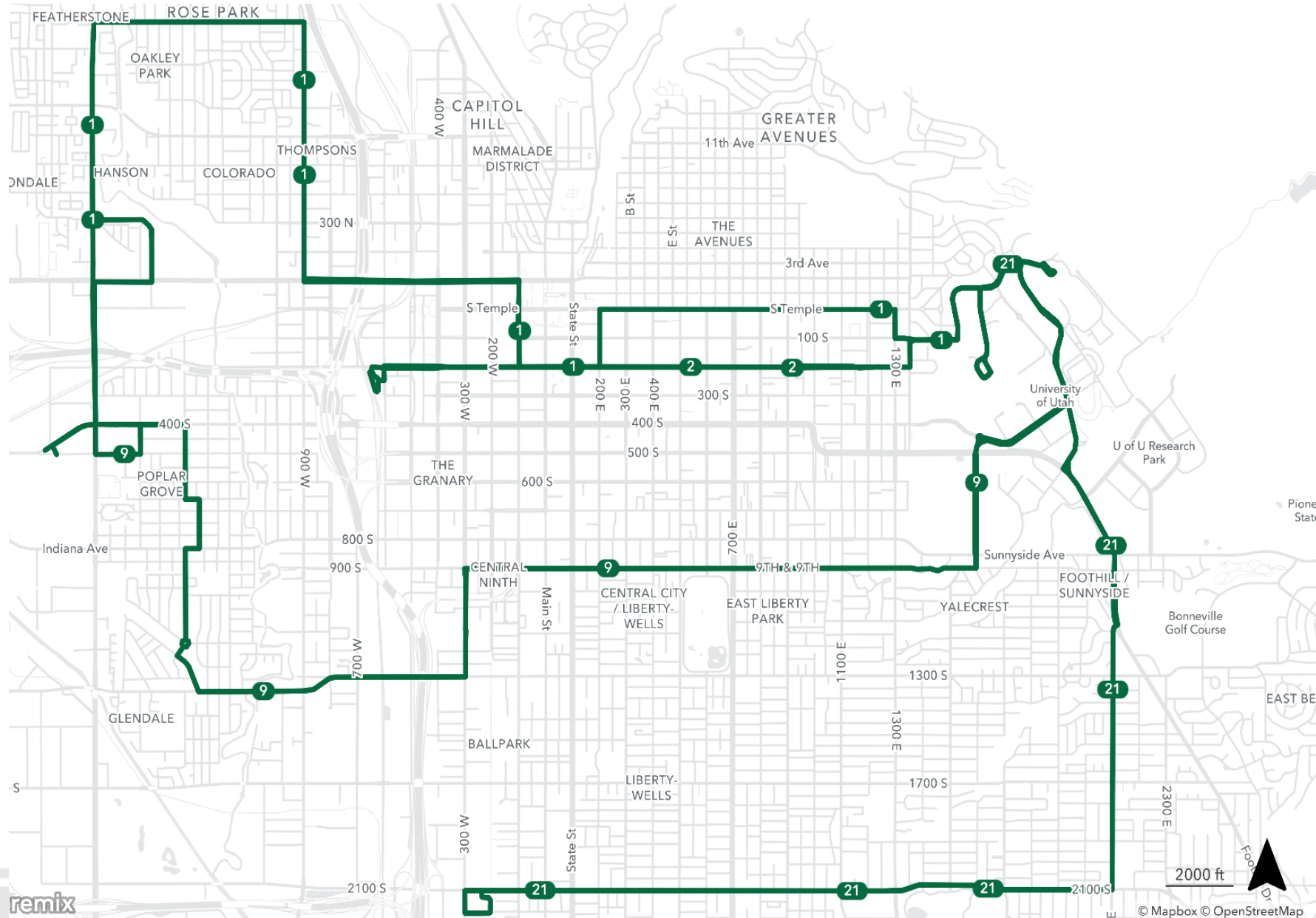
Concerts: Salt Lake and Ogden Twilight, Utah Symphony, etc.

Graduations: College and High School

Festivals: Pride, Utah Arts Festival, Utah State Fair, Greek, etc.

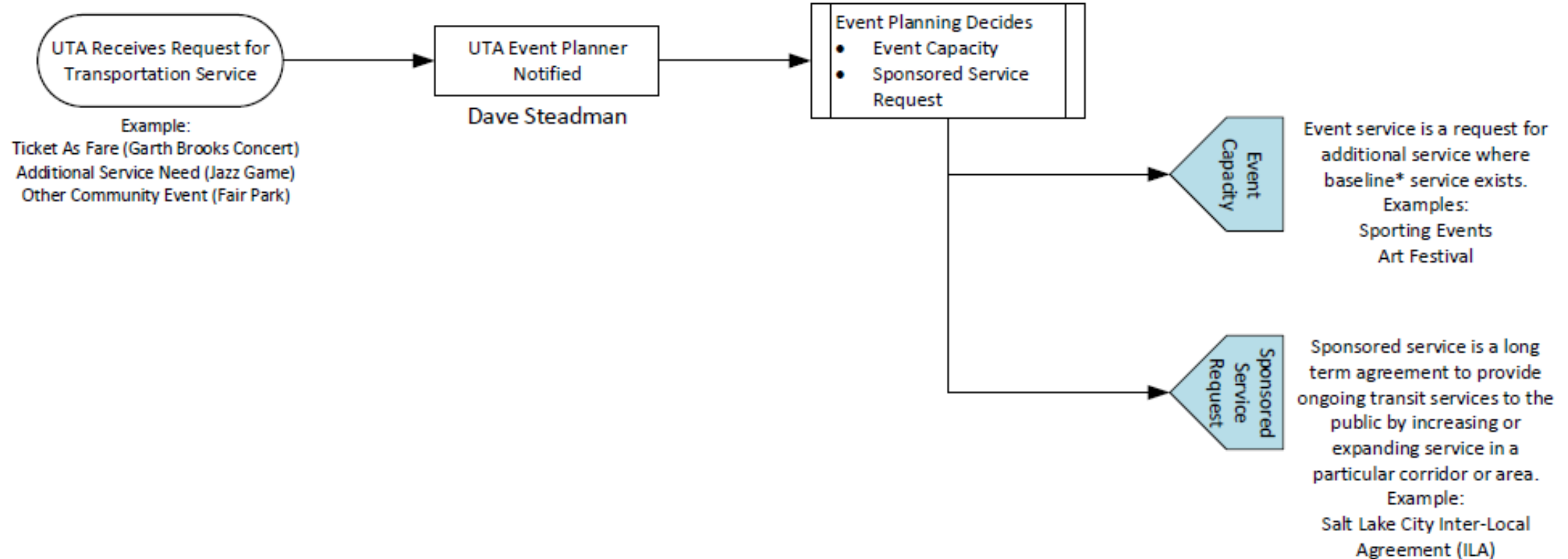


Salt Lake City Interlocal Agreement



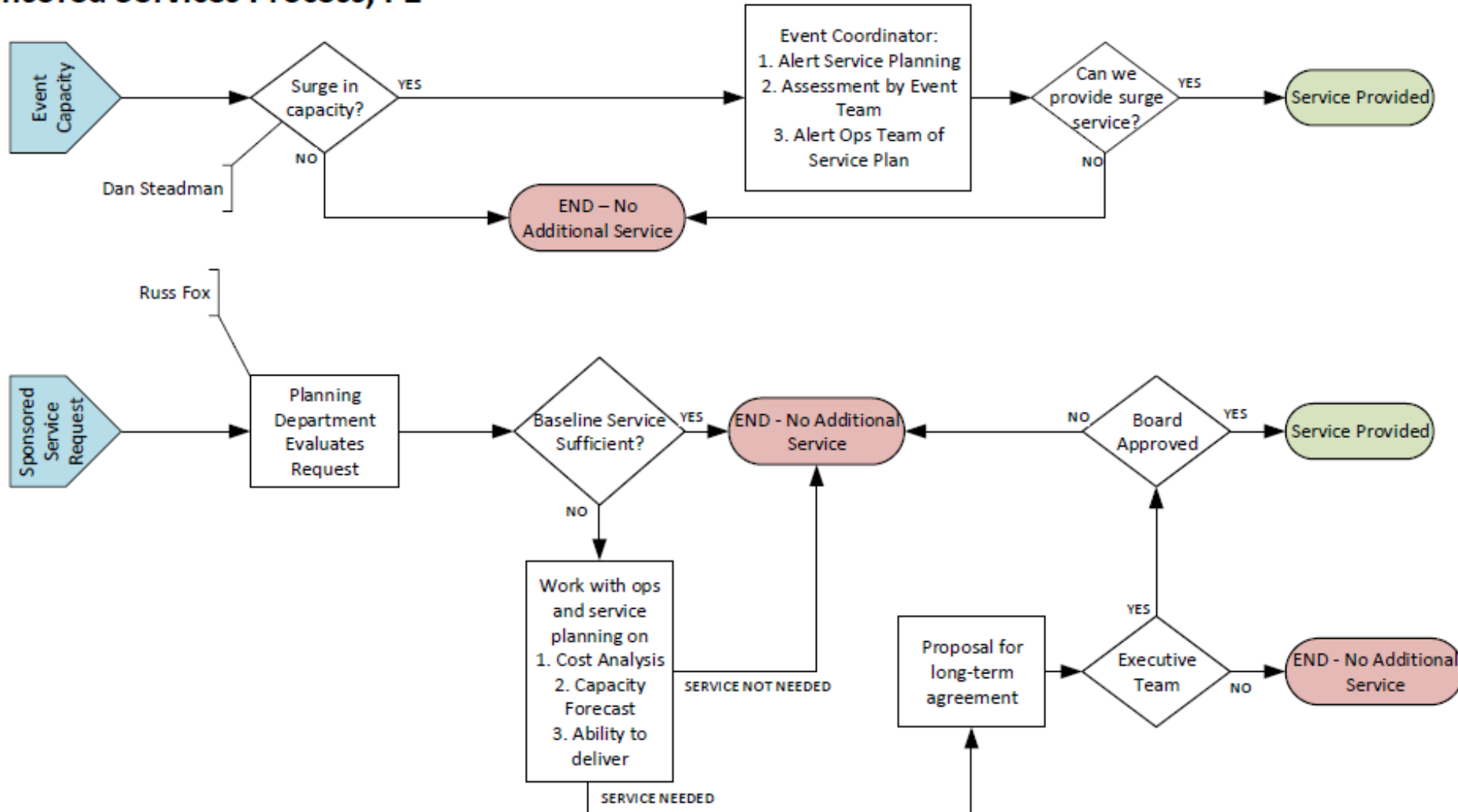
Process Outline

Utah Transit Authority Event, Charter, and Sponsored Services Process, P1



Process Outline

Utah Transit Authority Event, Charter, and Sponsored Services Process, P2



Questions?

