

UTA Five-Year Service Plan Draft Network



step 1

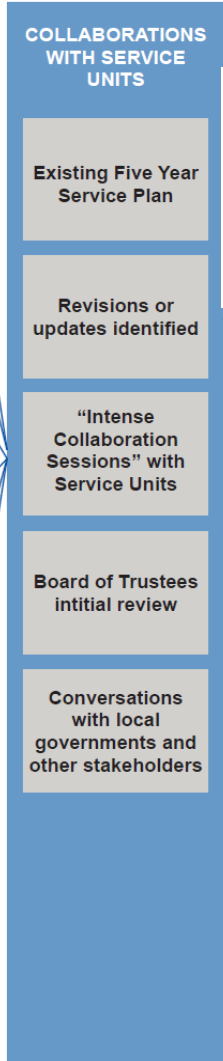
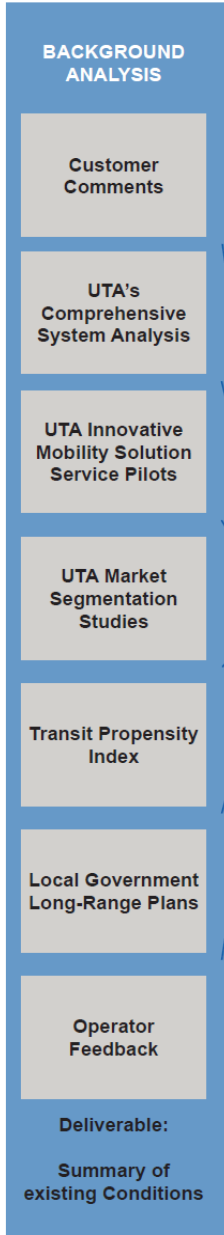
Five-Year Service Plan Development Process

step 2

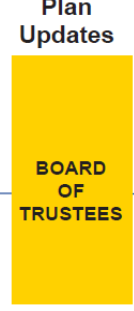
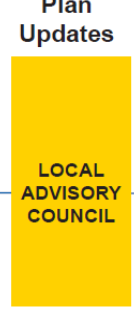
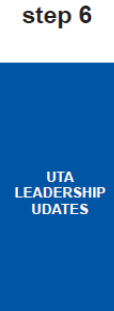
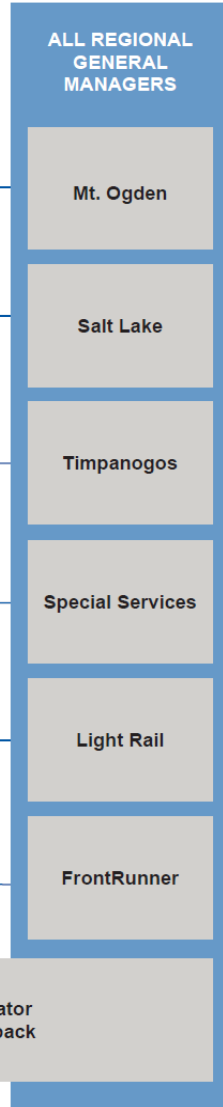
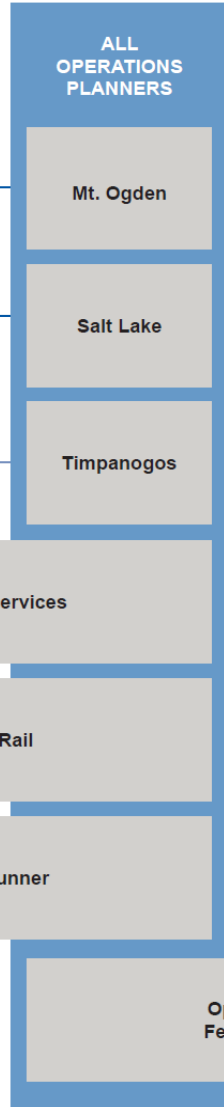
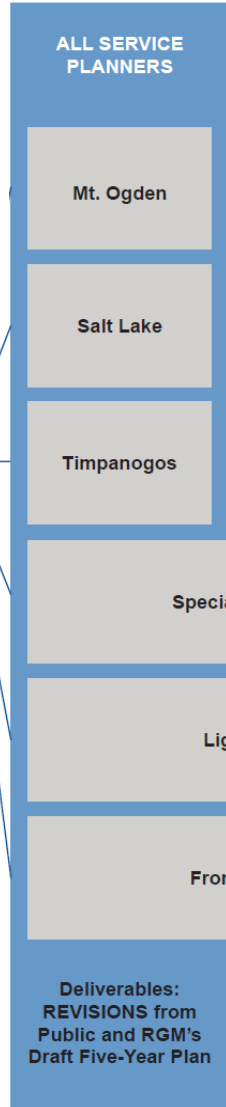
step 3

step 4

step 5



BOT
Presentation of Public Draft Network



The Plan

August 2023	Planned but Not Phased		Unconstrained	Vision Items
OGX 602, 603, 603X , 650	SLC – Ogden Regional 455, 470, 600, 609	Midvalley 47, 50 , 227, 240 F590	4 , 17, 31 , 39, 45, 54, 62, (F) 126 , 209, 223, 236 , 248, 509, 513, 604, 613, F618, 626, 627, 631 , 640, 641 , 656 , 831, 833, 842 , 850, 871	Davis / Salt Lake Community Connector
TRAX Saturday 701, 703, 704, 720	200 South 2, 2A , 2B , 220	5600 West 256 , F556		Point of the Mountain
PC/SLC 901, 902	South Utah County 821, 822, 823	Northwest Utah County 806 (F)809	North Weber OD Lehi OD West Provo OD S. SLCo OD Sandy / C'wood Heights OD West Jordan OD	Central Corridor South Valley
MTC-PVU 830X	205			Cottonwood Canyons
Contingency Ogden Local 607 , 611 , 612, F618, 625, 645				FrontRunner Forward (Strategic Double-Tracking)

Font Key: **Bold** = new service, Plain = changed service, ~~Strikethrough~~ = discontinued service



August 2023

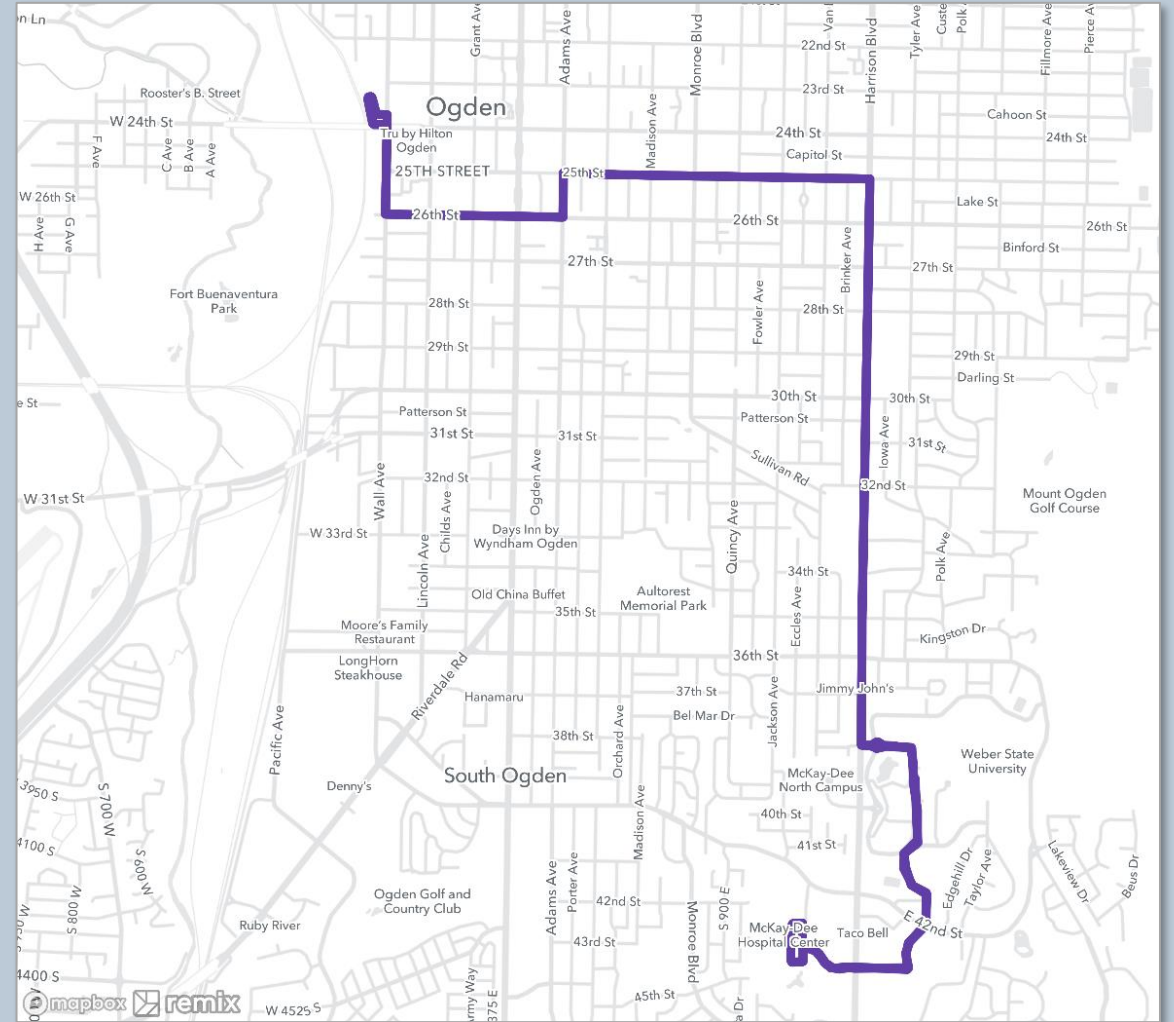
<https://www.rideuta.com/fysp>

OGX

602

603 603X

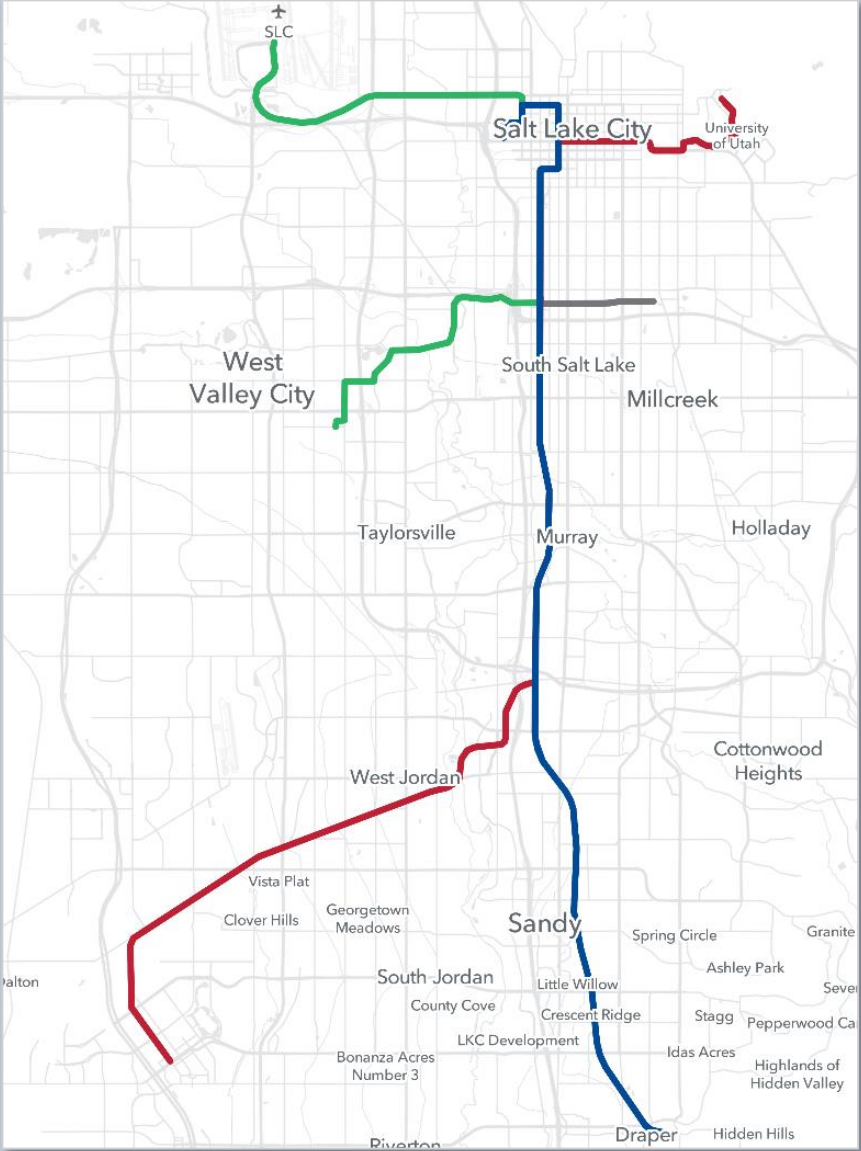
650



TRAX Saturday

Blue
Red
Green
S-Line

Increase Saturday
Frequency
to 15 min



PC/SLC Connect

901

902



MTC - PVU

UVX



Ogden Local

607

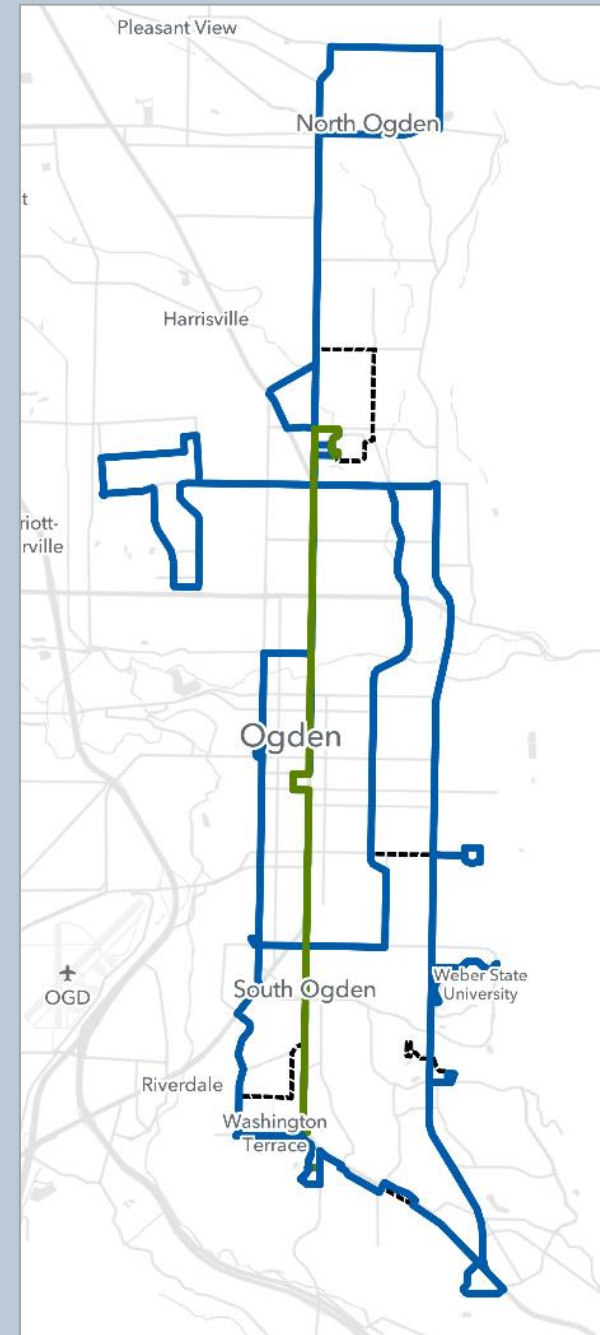
611

612

F618

625

645

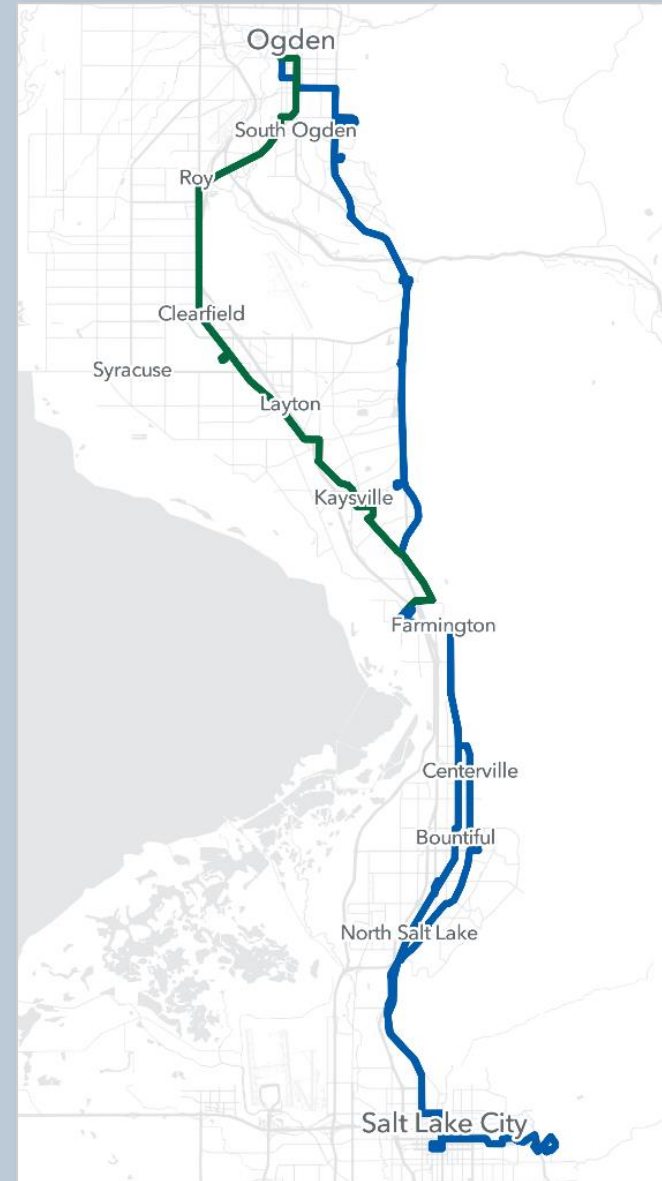


Planned but Not Phased

2024-2027

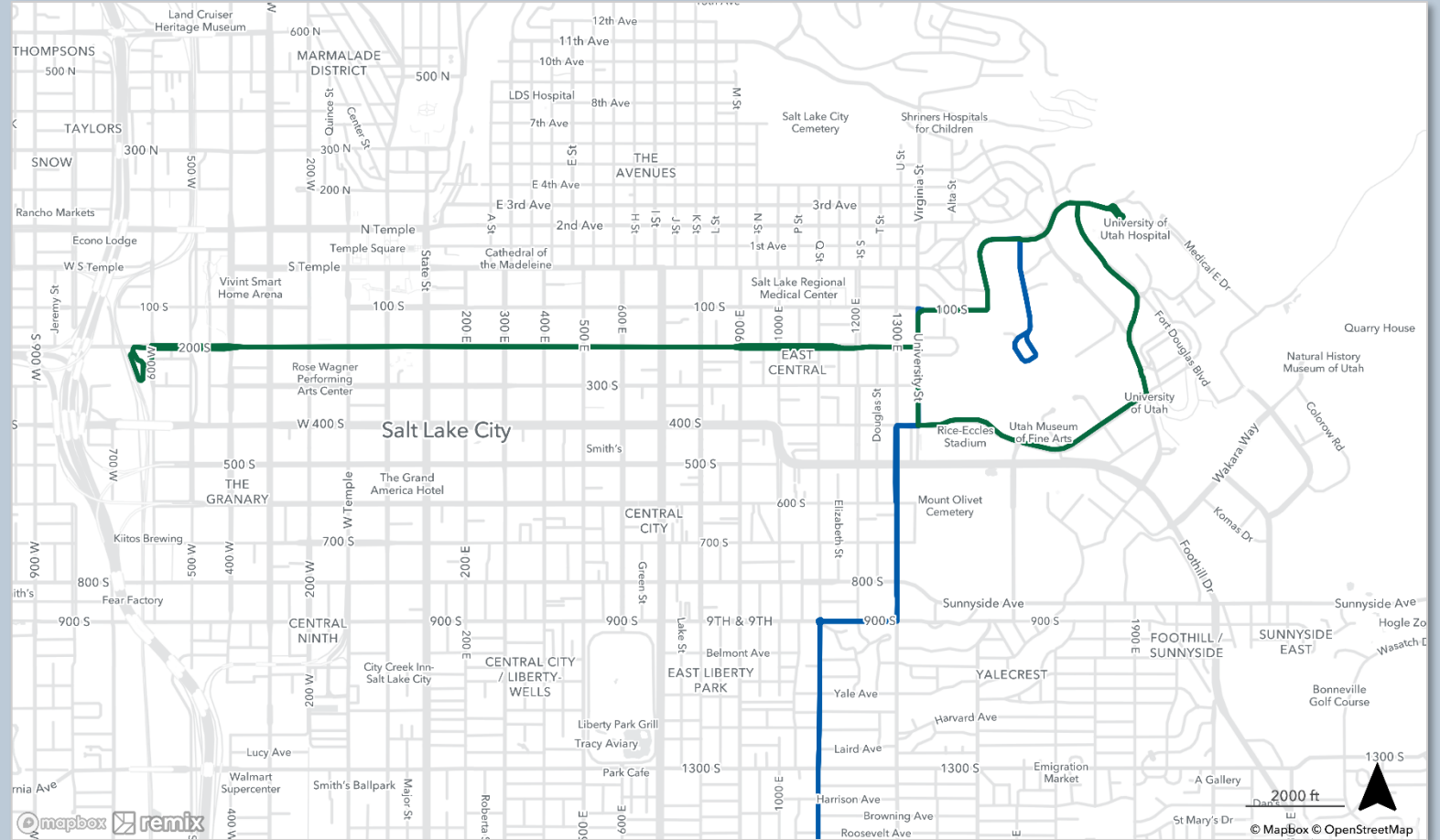
SLC – Ogden Regional

455
470
600
609



200 South

- 2
- 2A
- 2B
- 220

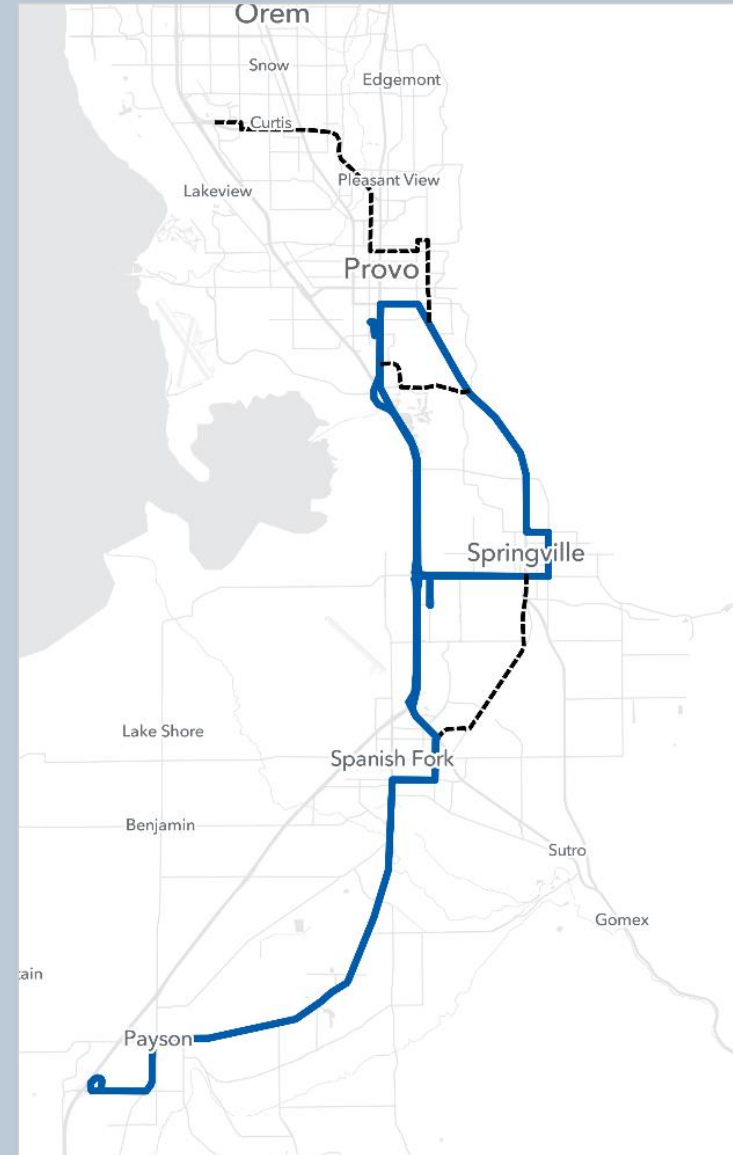


South Utah County

821

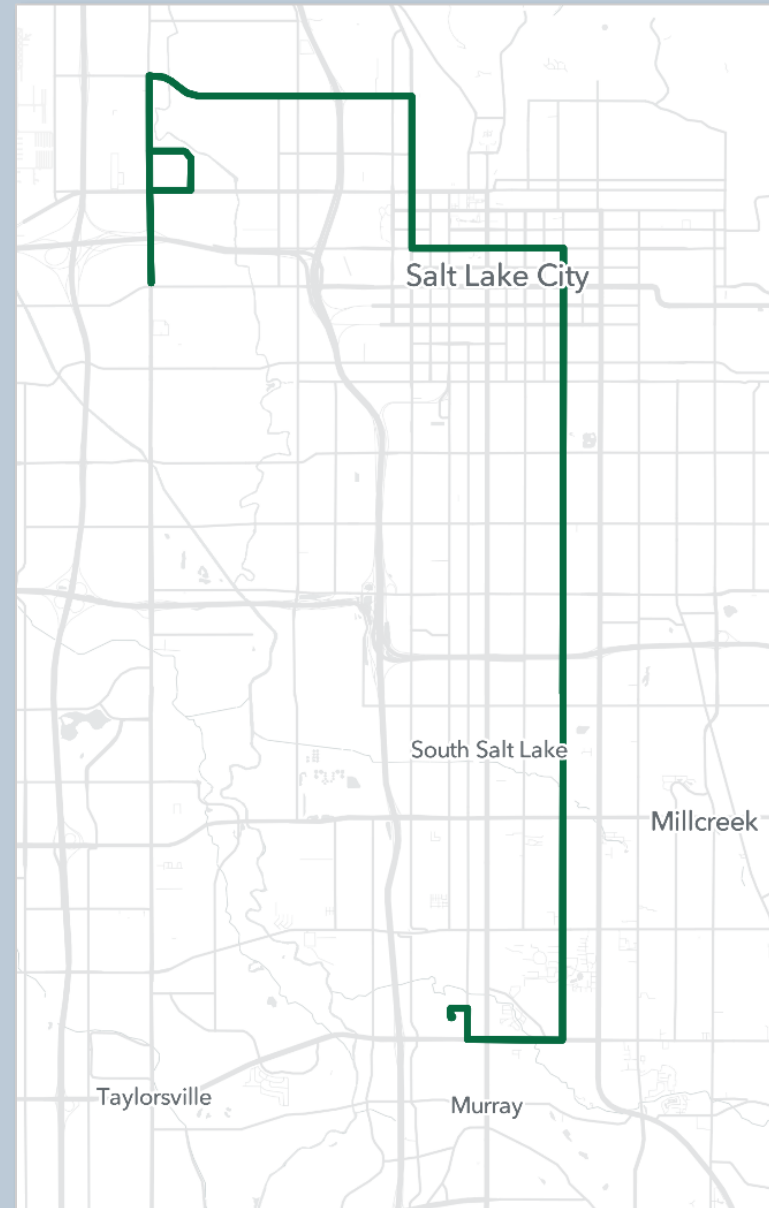
~~822~~

823



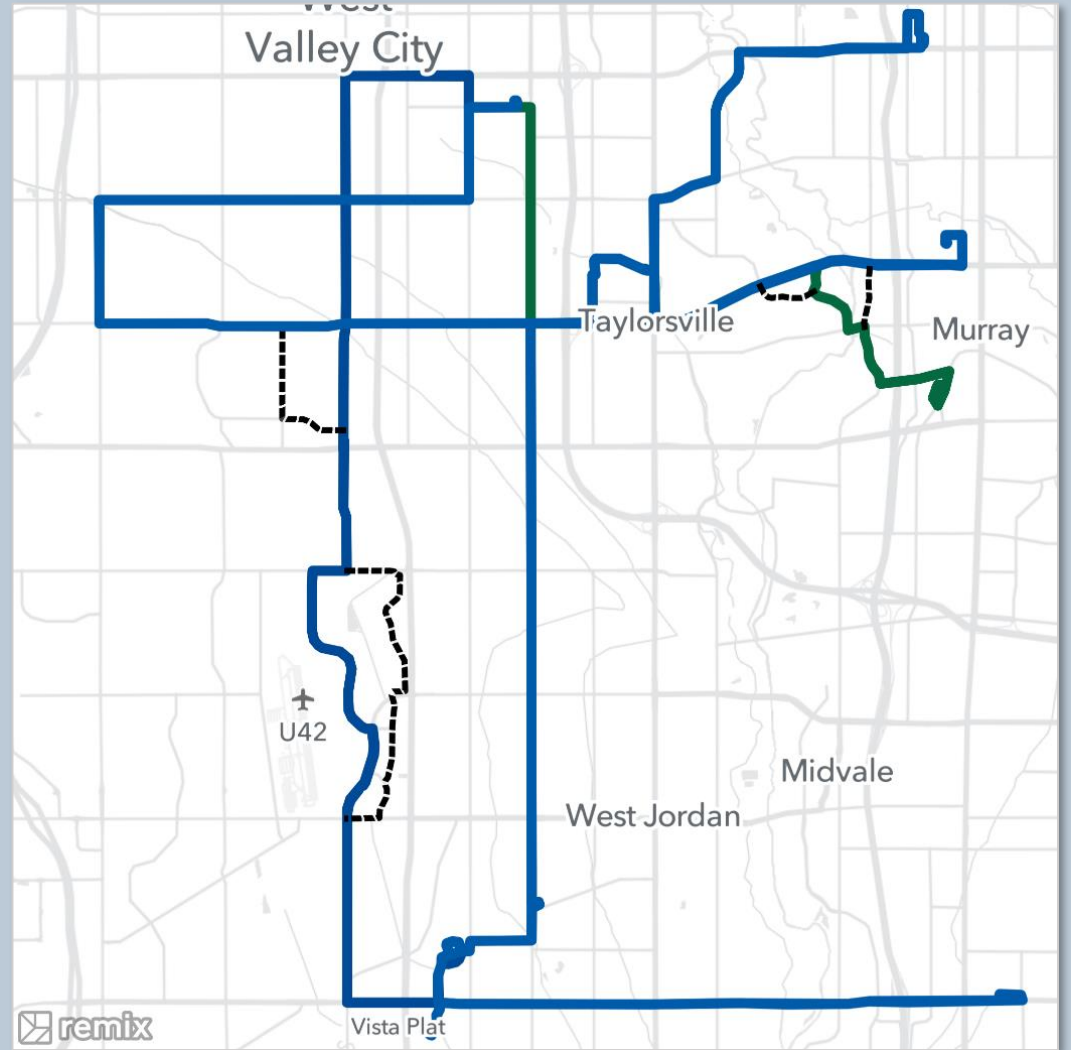
205

205



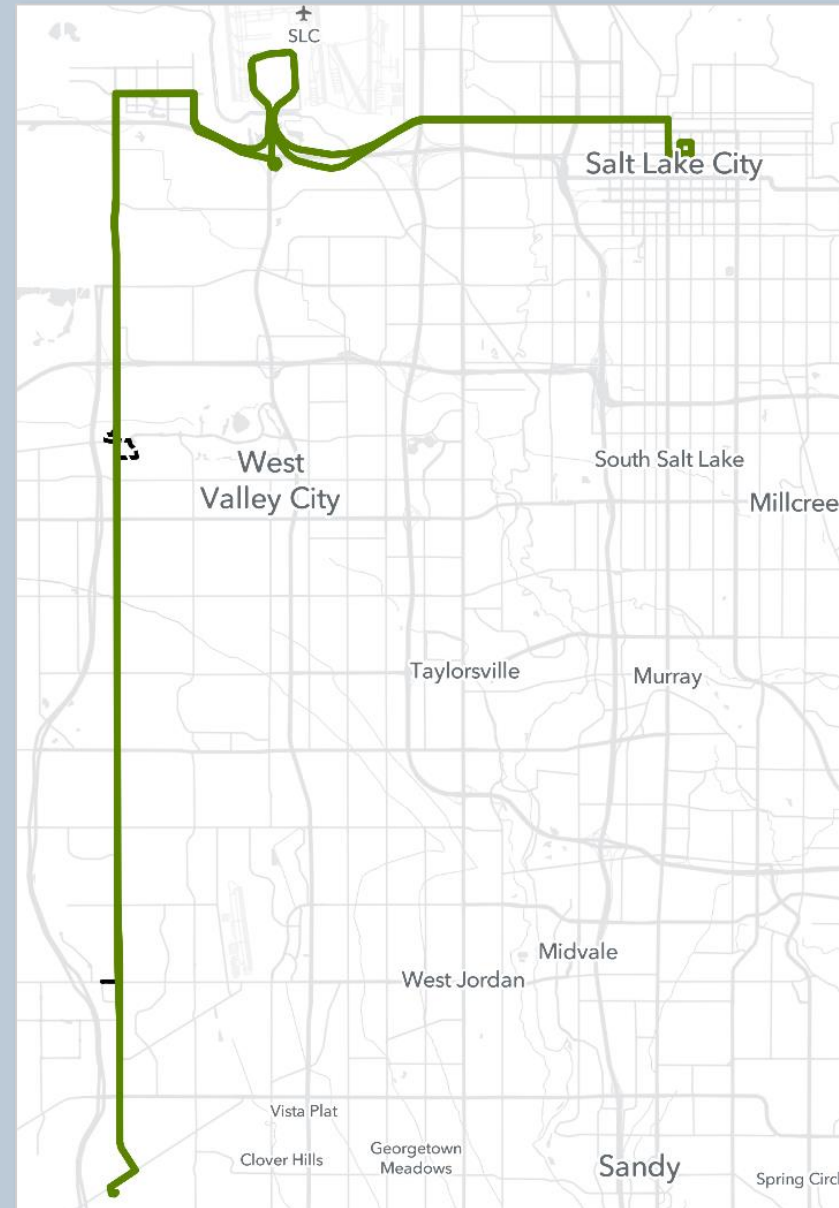
Midvalley Connector

47
50
227
240
F590



5600 West

256
F556



Northwest Utah County

806
809



Unconstrained

Pending staffing/resource availability

Unconstrained

4, 17, 31, 39, 45, 54, 62, (F)126, 209, 223, 236,
248, 509, 513, 604, 613, F618, 626, 627, 631,
640, 641, 656, 831, 833, 842, 850, 871

North Weber OD

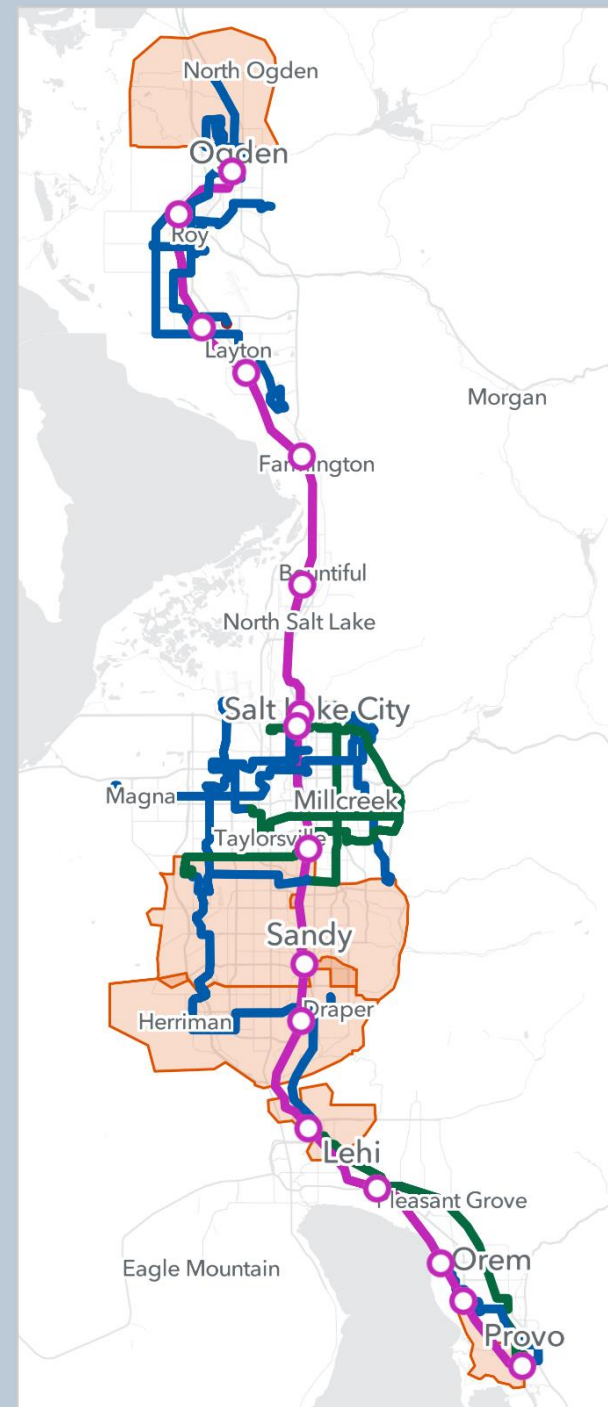
Lehi OD

West Provo OD

South Salt Lake County OD

Sandy / Cottonwood Heights OD

West Jordan OD

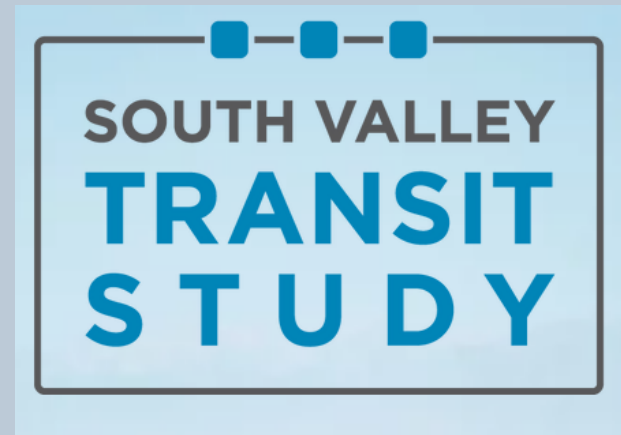


Vision

Future Projects

<https://www.rideuta.com/fyssp>

Vision



Next Steps

Community Engagement and Presentations

Public Engagement Process

Development of draft Engagement Plan
Analysis ongoing

Survey launched
Internal UTA Engagement efforts launched
Internal vetting at UTA and Board of Trustees (August to Dec)
Present (the draft network) to the Board of Trustees
Schedule government/stakeholder public presentations

Official Public Comment Period (November 30-January 15)

Final draft network presented to LAC & Board of Trustees for adoption

July 2022

Aug. 2022

Sep & Oct 2022

Nov. 2022

Dec. 2022

Jan 2023

Feb. 2023

Draft Engagement plan finalized
Engagement kick-off
ArcGIS Story map launched
Internal engagement scheduled

WE ARE HERE

Draft network presented to LAC
Board of Trustees Community Road Show ongoing
Final draft network presented to the BoT

Draft plan revision period
Memo submitted for Local Advisory Council and Board of Trustees meetings

Any Questions?