

Monthly Operating Financial Report May 2024

July 10, 2024



Agenda Item 6.b.

Utah Transit Authority

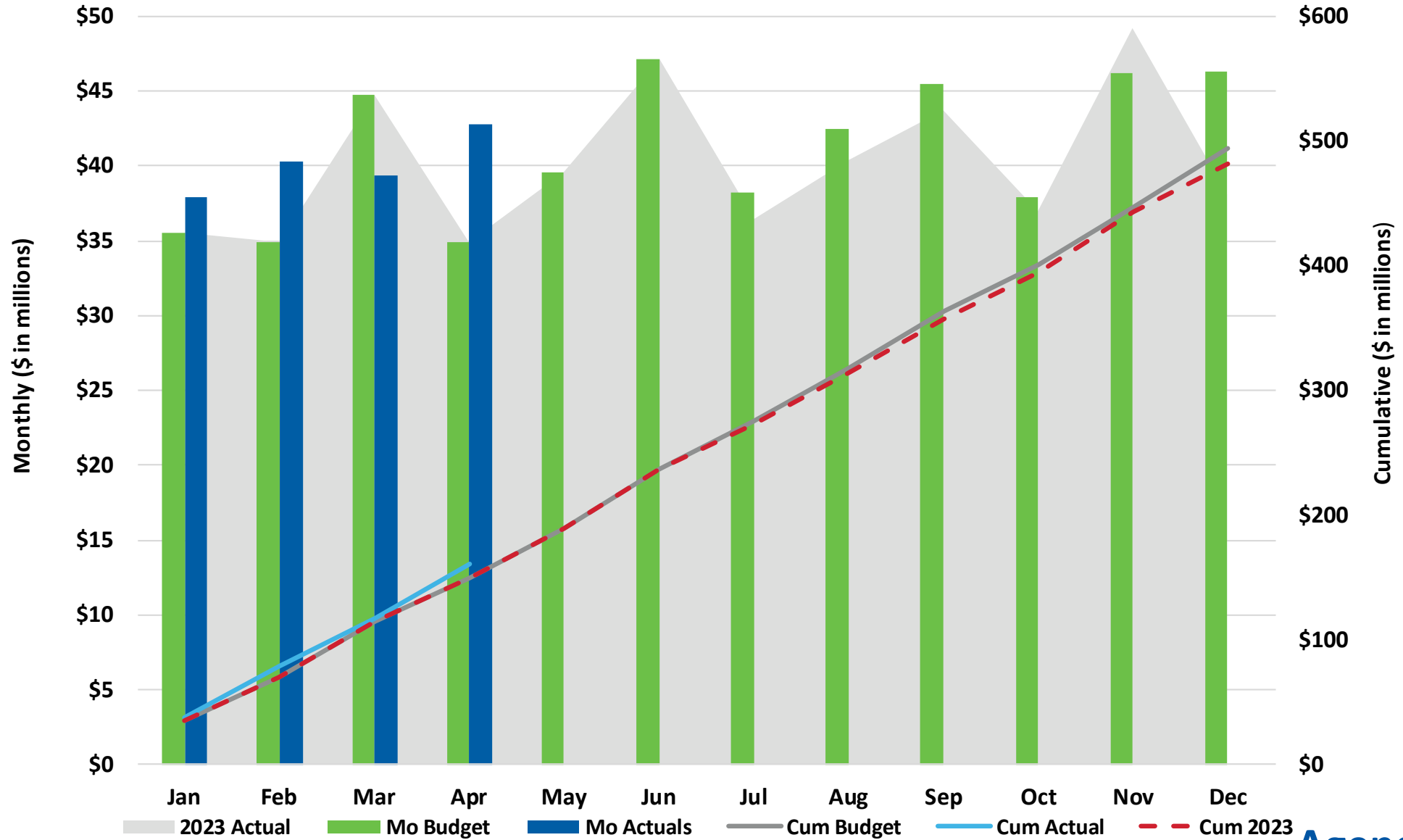
Board Dashboard: May 31, 2024

Financial Metrics	May Actual	May Budget	Fav / (Unfav)	%	YTD Actual	YTD Budget	Fav / (Unfav)	%
Sales Tax (Apr '24 mm \$)	\$ 42.8	\$ 34.9	\$ 7.86	● 22.5%	\$ 160.4	\$ 150.1	\$ 10.26	● 6.8%
Fare Revenue (mm)	\$ 3.6	\$ 3.1	\$ 0.50	● 16.3%	\$ 17.0	\$ 14.4	\$ 2.62	● 18.2%
Operating Exp (mm)	\$ 44.4	\$ 34.8	\$ (9.57)	● -27.5%	\$ 173.7	\$ 176.5	\$ 2.79	● 1.6%
Subsidy Per Rider (SPR)	\$ 11.95	\$ 11.64	\$ (0.31)	● -2.6%	\$ 9.35	\$ 10.78	\$ 1.43	● 13.3%
UTA Diesel Price (\$/gal)	\$ 2.55	\$ 4.03	\$ 1.48	● 36.7%	\$ 2.70	\$ 4.03	\$ 1.33	● 32.9%
Operating Metrics	May Actual	May-23	F / (UF)	%	YTD Actual	YTD 2023	F / (UF)	%
Ridership (mm)	3.41	3.03	0.4	● 12.5%	16.76	14.08	2.7	● 19.0%
Energy Cost by Type (Monthly Avg YTD)								
	Diesel Bus (Cost per Mile)				\$ 0.53			
	Diesel CR (Cost per Mile)				\$ 4.63			
	Unleaded Gas (Cost per Mile)				\$ 0.35			
	CNG (Cost per Mile)				\$ 0.23			
	Bus Propulsion Power (Cost per Mile)				\$ 0.96			
	TRAX Propulsion Power (Cost per Mile)				\$ 0.79			

"Sales Tax" lists the amount of sales tax revenue received for the month listed in bold. All other data reflects the month listed in the table title.

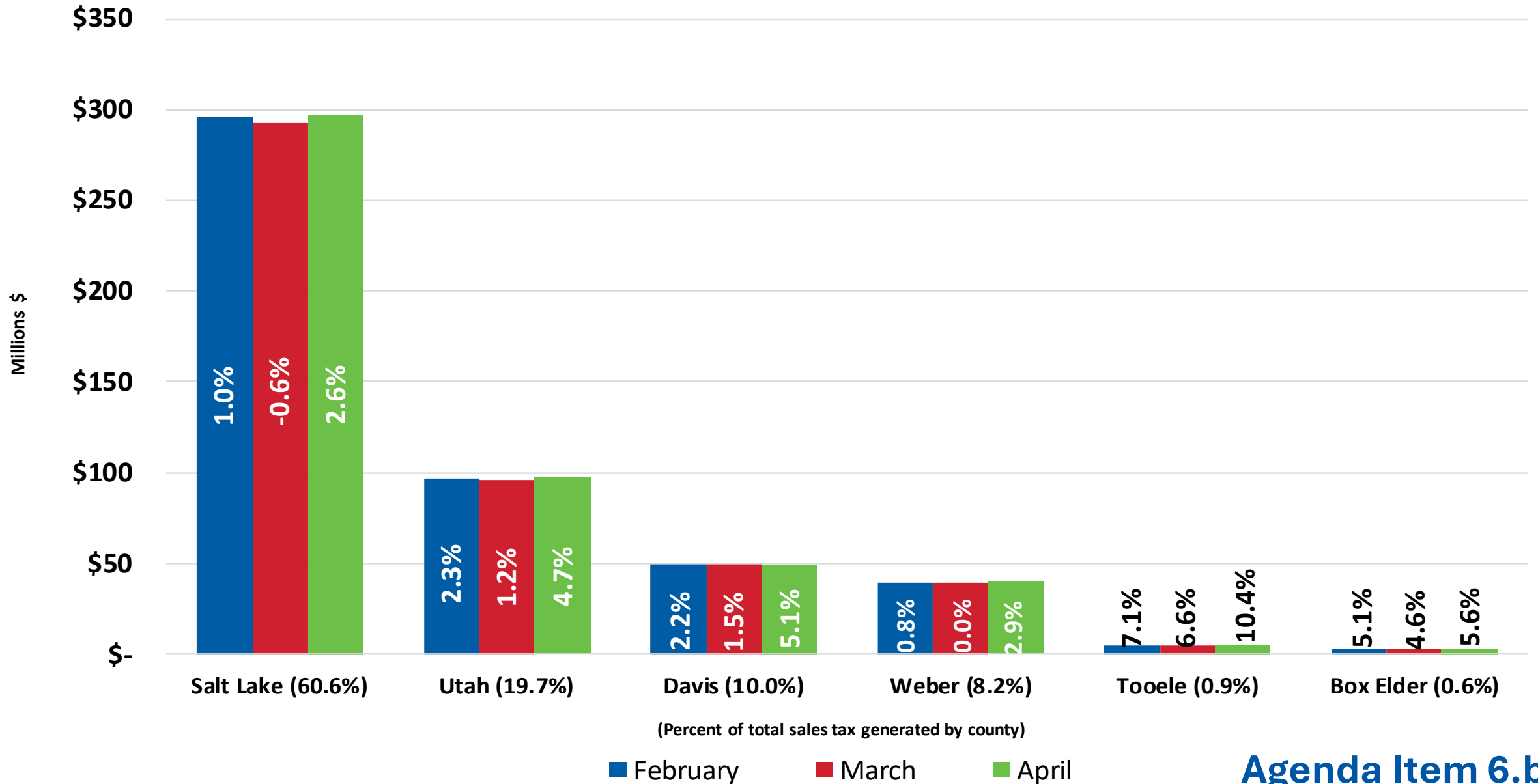
2024 Sales Tax

April YTD Variance \$10.3M Above Budget

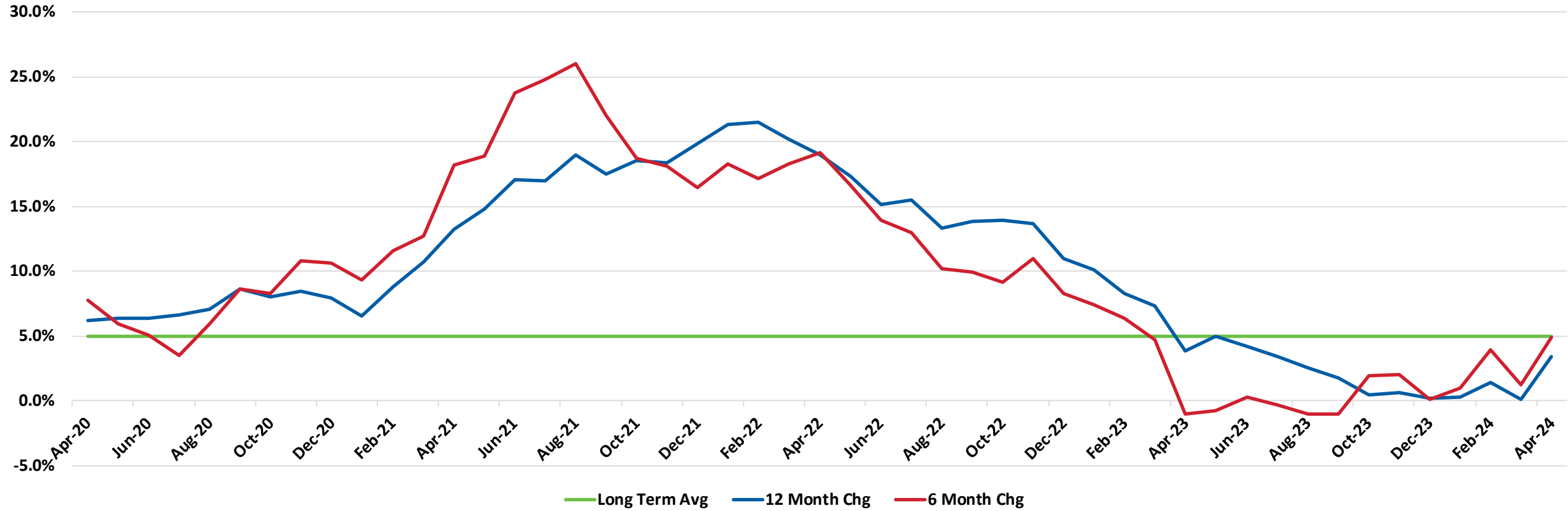


Sales Tax Collections

Percentage Change for 12 months ended April 30, 2024

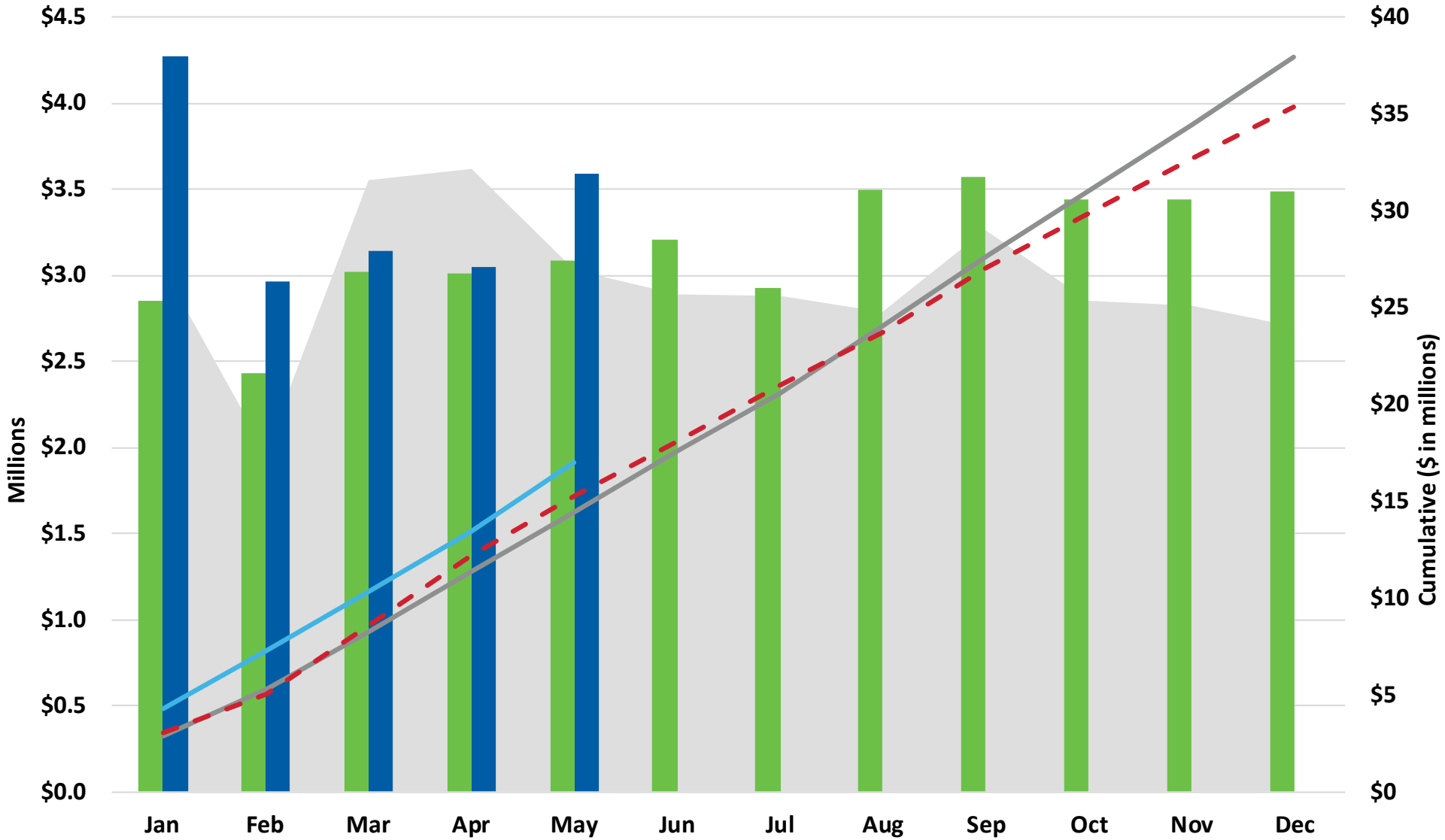


UTA Sales Tax Growth 2020 - 2024



2024 Passenger Revenue

May YTD \$2.6M > Budget



2023 Actual
 Mo Budget
 Mo Actuals
 Cum Budget
 Cum Actual
 Cum 2023

FTE Report May 2024



FTE Report

May-24

	Budget	May-24 Budget vs. Actual			Vacancy Rate		
		Actual	Variance	Vacancy Rate	Prior Month	Start of Year	Prior Year
Administrative FTE							
Admin Depts	633.9	609.5	24.4	3.8%	4.3%	7.1%	9.4%
Operating Depts	384.0	374.5	9.5	2.5%	3.3%	2.5%	5.1%
Subtotal	1,017.9	984.0	33.9	3.3%	3.9%	5.4%	7.8%

	Budget	Vacancy			Prior Month	Start of Year	Prior Year
		Actual	Variance	Rate			
Bargaining Unit FTE							
Admin Depts	47.0	94.0	-47.0	-100.0%	-88.3%	-54.8%	-117.1%
<i>Operating Modes</i>							
Bus	1,078.0	1,093.5	-15.5	-1.4%	1.1%	3.5%	13.8%
Light Rail	285.0	286.0	-1.0	-0.4%	-2.5%	-4.9%	2.5%
Commuter Rail	103.0	105.0	-2.0	-1.9%	-1.9%	3.9%	1.9%
Riverside	157.0	152.5	4.5	2.9%	1.6%	4.7%	8.2%
Asset Mgt	186.0	167.0	19.0	10.2%	10.8%	11.4%	10.9%
Subtotal	1,856.0	1,898.0	-42.0	-2.3%	-0.9%	1.8%	7.8%

Total FTE	2,873.9	2,882.0	-8.1	-0.3%	0.8%	3.0%	7.8%
------------------	----------------	----------------	-------------	--------------	-------------	-------------	-------------

May 2024 YTD Financial Results



OPERATING FINANCIALS

May 2024 YTD

FISCAL YEAR 2024 Dollars In Millions	YEAR-TO-DATE RESULTS					
	Prior Year Actual	Current Year				
		Actual	Budget	Variance		
Revenue						
Sales Tax (May accrual)	\$ 189.7	\$ 197.3	\$ 189.7	\$ 7.6	4.0%	
Fares	15.2	17.0	14.4	2.6	18.2%	
Federal	0.1	0.0	32.0	(32.0)	-99.9%	
Other *	22.1	31.2	9.3	21.8	233.5%	
TOTAL REVENUE	\$ 227.2	\$ 245.5	\$ 245.5	\$ 0.0	0.0%	
Expense						
Salary/Wages	\$ 70.5	\$ 79.8	\$ 78.1	\$ (1.8)	-2.3%	
Overtime	6.1	5.7	5.7	(0.0)	-0.7%	
Fringe Benefits	35.9	41.1	41.6	0.5	1.3%	
Total Compensation	\$ 112.5	\$ 126.7	\$ 125.4	\$ (1.3)	-1.0%	
Services	14.9	15.5	18.6	3.1	16.8%	
Parts	10.8	11.8	10.8	(1.0)	-8.9%	
Fuel	12.9	11.6	14.9	3.3	22.0%	
Utilities	4.3	3.4	3.2	(0.2)	-6.4%	
Other	5.0	10.2	8.8	(1.4)	-15.5%	
Capitalized Cost	(5.5)	(5.5)	(5.3)	(0.2)	3.9%	
TOTAL EXPENSE	\$ 154.9	\$ 173.7	\$ 176.5	\$ 2.8	1.6%	
Debt Service	33.6	32.1	34.8	2.7	7.6%	
Contrib. Capital/Reserves	\$ 38.7	\$ 39.7	\$ 34.2	\$ 5.5	16.0%	

*Does not include Sale of Assets (\$56.2K) or Non-Cash items

Favorable/(Unfavorable)

Agenda Item 6.b.

Questions?



Capital Program Update May 2024

July 10, 2024

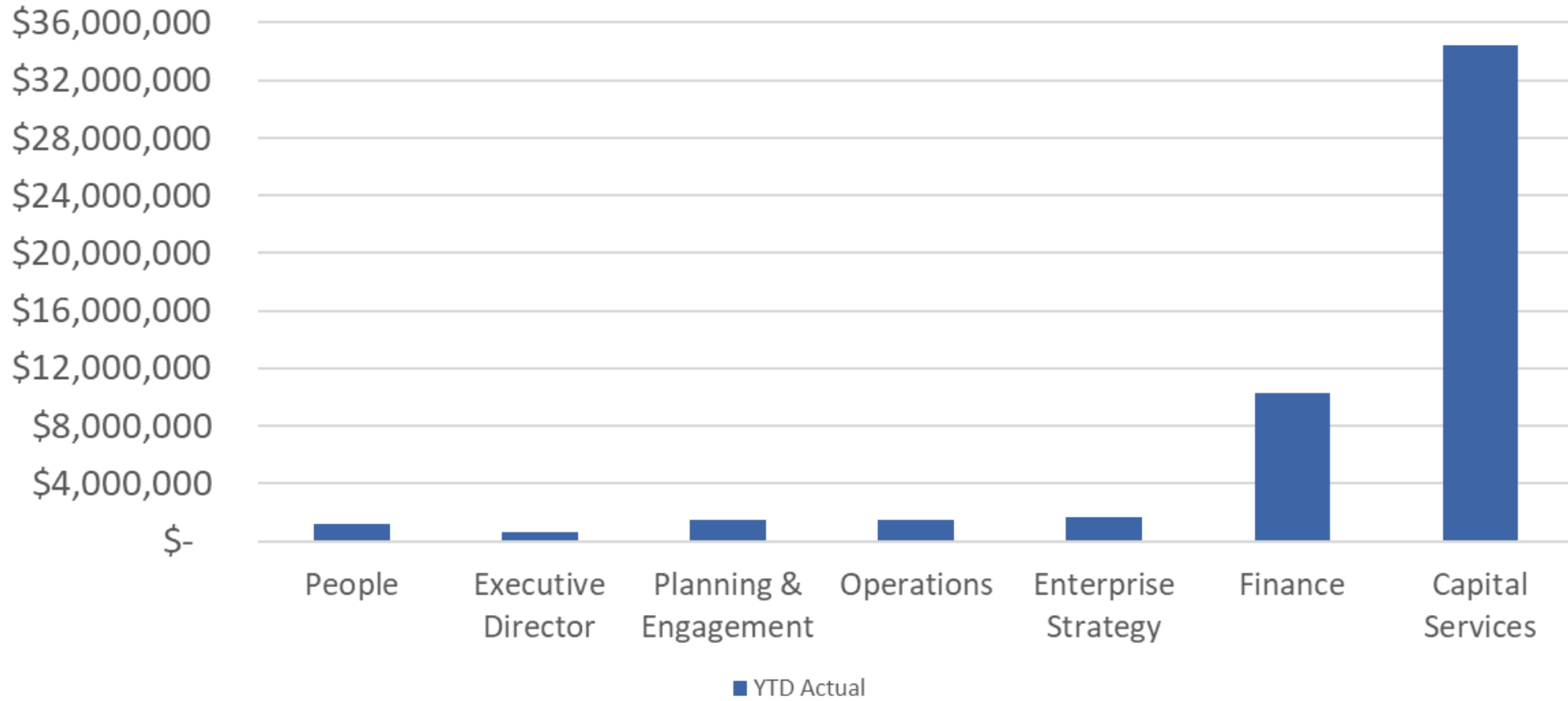


Utah Transit Authority Capital Program: May 31, 2024

Chief Office	May Actual	May Budget	Variance	%	YTD Actual	YTD Budget	Variance	%
People	\$ 0	\$ 0	\$ -	● 0.0%	\$ 1,170,013	\$ 1,239,000	\$ 68,987	● 5.6%
Executive Director	128,448	360,000	231,552	● 64.3%	\$ 623,547	\$ 888,000	264,453	● 29.8%
Planning & Engagement	345,354	486,000	140,646	● 28.9%	\$ 1,499,711	\$ 1,656,000	156,289	● 9.4%
Operations	305,584	305,000	(584)	● -0.2%	\$ 1,467,245	\$ 1,692,000	224,755	● 13.3%
Enterprise Strategy	604,515	1,080,000	475,485	● 44.0%	\$ 1,696,529	\$ 1,726,000	29,471	● 1.7%
Finance	348,087	6,282,000	5,933,913	● 94.5%	\$10,236,306	\$13,450,000	3,213,694	● 23.9%
Capital Services	9,075,068	11,426,000	2,350,932	● 20.6%	\$34,395,763	\$42,279,000	7,883,237	● 18.6%
Total	\$10,807,056	\$19,939,000	\$ 9,131,944	● 45.8%	\$51,089,114	\$62,930,000	\$ 11,840,886	● 18.8%



May YTD Capital Spend



Questions?

