

UTA LOCAL ADVISORY COUNCIL MEETING

February 15, 2023



CALL TO ORDER AND OPENING REMARKS



PLEDGE OF ALLEGIANCE



SAFETY FIRST MINUTE



PUBLIC COMMENT

Live comments are limited to 3 minutes per commenter

Public comment was solicited prior to the meeting through alternate means, including email, telephone, and the UTA website

Comments received through alternate means were distributed to the Local Advisory Council prior to meeting



CONSENT AGENDA

- a. Approval of November 2, 2022 Local Advisory Council Meeting Minutes



Recommended Action (by acclamation)

Motion to approve the consent agenda, with revised minutes



SERVICE PLANNING CONSULTATION



Regional Transportation Plan Process





2023-2050 Regional Transportation Plan

UTA Local Advisory Council // February 15, 2023



The Metropolitan Planning Organizations



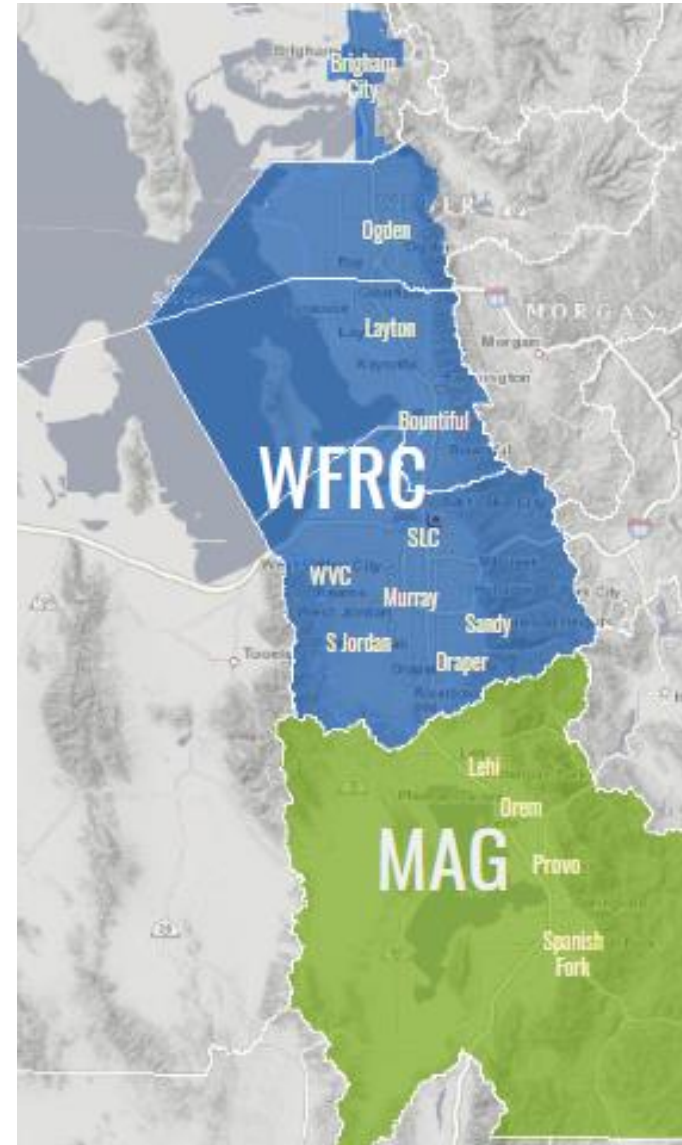
WASATCH FRONT REGIONAL COUNCIL



MAG

Expert Resources. Enriching Lives.

Mountainland Association of Governments



Wasatch Choice Vision



Economic Development

Comprehensive
Economic Development
Strategy

Land Use

Transportation
and Land Use
Connection

Transportation

Regional
Transportation
Plan

What is included in the Regional Transportation Plan (RTP)?



Cities & Counties



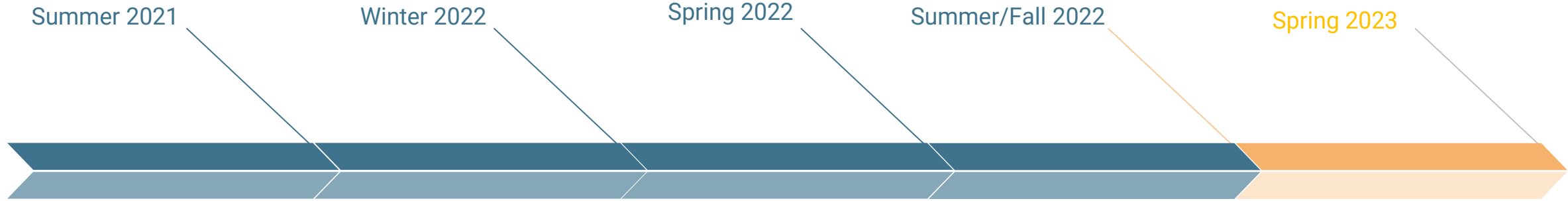
U T A



Regional Transportation Plan Overview



Regional Transportation Plan Development Timeline



Project Initiation

Draft Preferred Scenario

Needs-Based Phasing

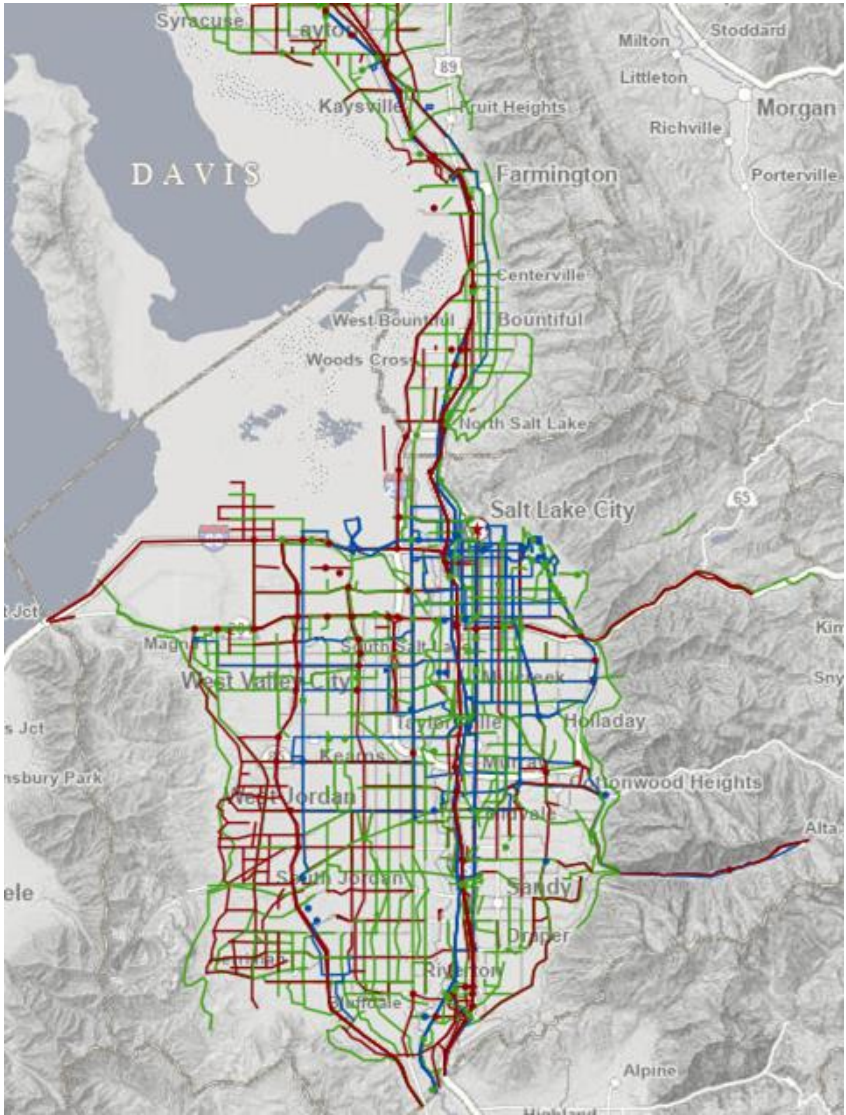
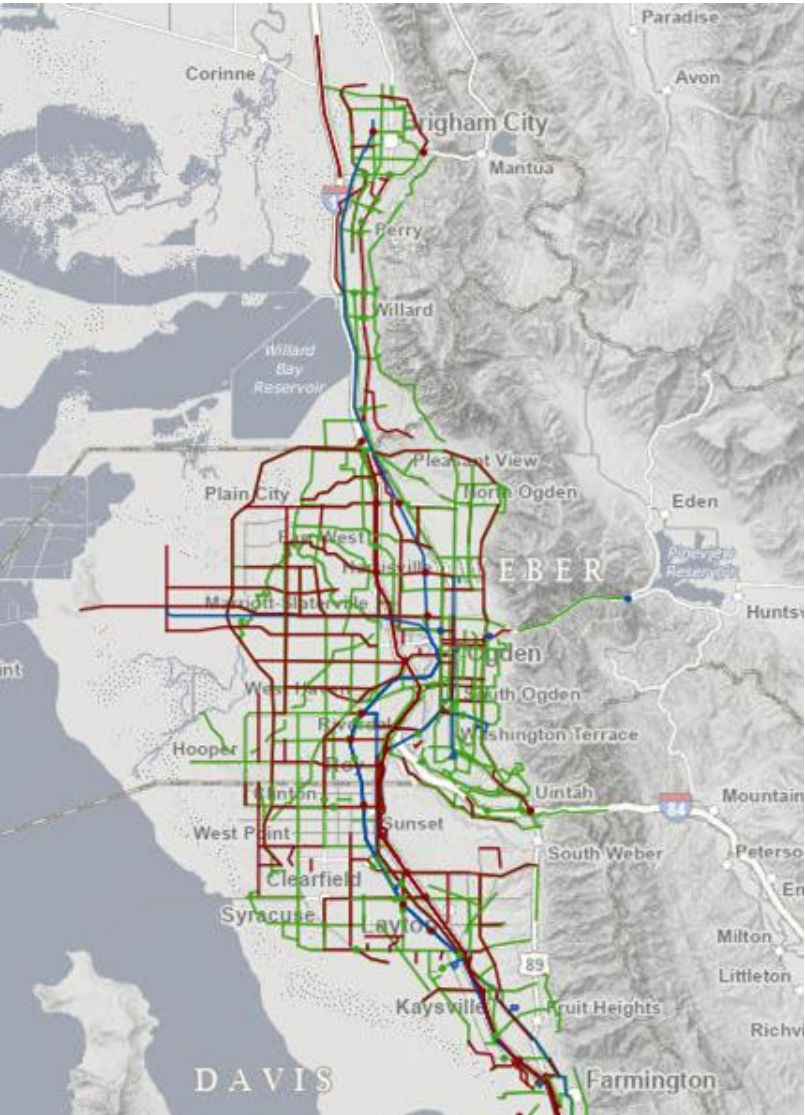
Fiscal Constraints

**Public Comment &
Final Adoption**



Community Engagement &
Outreach

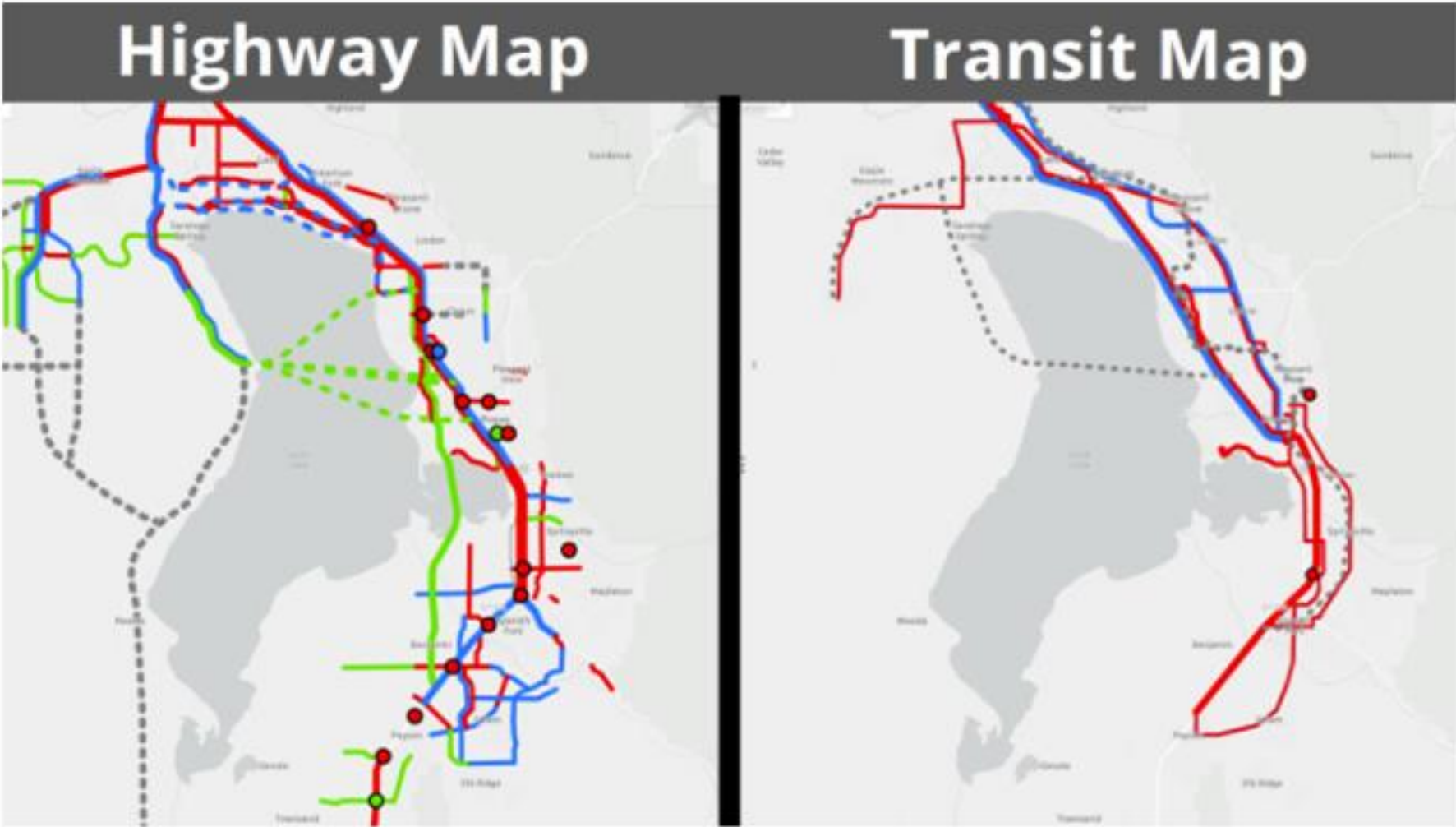
Roadway + Active Transportation + Transit RTP Projects



Legend

- — Active Transportation
- — Transit
- — Roadway

Roadway + Transit RTP Projects



Legend

- — Phase 1
2023-2032
- — Phase 2
2033-2042
- — Phase 3
2043-2050
- — Vision
- — WFR

Next Steps



Winter 2023

2023-2050 RTP and Air Quality
Memorandum #41 -

**WFRC Public Comment Period:
Jan 27th - Feb 26th**

**MAG Public Comment Period:
March 1st - March 31st**

RTP Documentation



Spring 2023

Review by WFRC and MAG
Committees and Councils

WFRC - May 2023 Adoption

MAG - June 2023 Adoption



Summer/Fall 2023

Utah's Unified Plan
Coordination and Outreach



2023-2050 Regional Transportation Plan

UTA Local Advisory Council// February 15, 2023



**AR2023-02-01 – Resolution
Approving the Proposed
2023-2027 Five-Year Service Plan
and Recommending Adoption by
the Authority’s Board of Trustees**



2023-2027

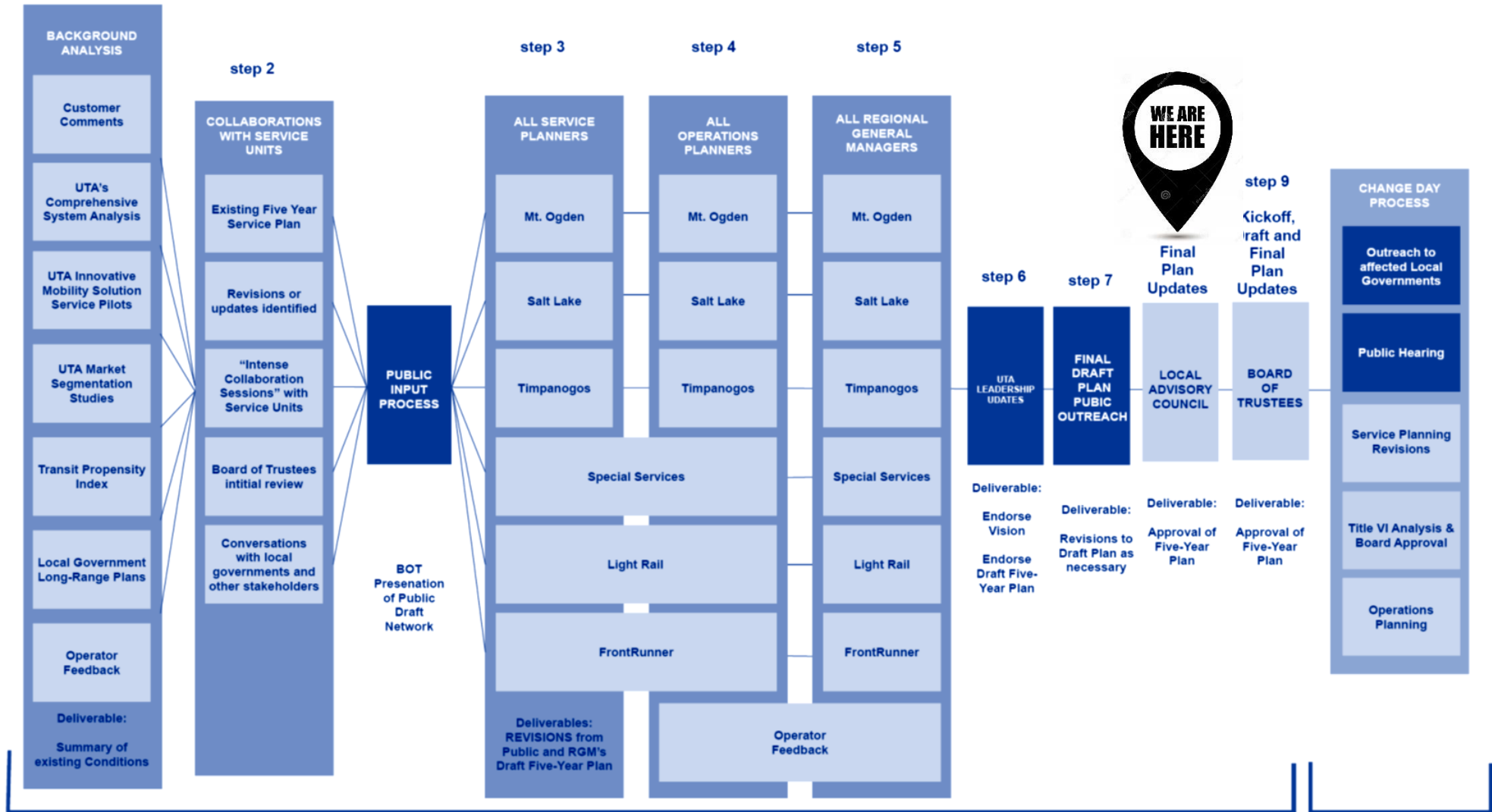
FIVE-YEAR SERVICE PLAN



PROCESS

Five-Year Service Plan Development Process

step 1



Five-Year Service Plan Development Process (2-year Update Cycle)

Operations Planning Process (Annual Cycle)

Public Engagement Overview

Community Engagement Efforts

- Transit Needs Survey
- Community/city notifications & communications
- Subscriber communications
- Engaged media outlets
- Social media & website
- Community meetings



Public Comment

- December 7, 2022 – January 23, 2023
 - Mail, email, comment form, phone
- Total Comments
- Comment Overview & Themes
- rideuta.com/FYSP



FIVE-YEAR SERVICE PLAN

www.rideuta.com/fysp



The Proposed Plan – at a Glance

2023	2024	2025	2026	2027	Vision (Long-Term)
August Park City/Salt Lake City 901, 902 OGX 602, 603 , 603X , 650 TRAX Saturday 701, 703, 704, 720 Flex Routes F202, F570, F638 Contingent Upon Resources 39, 201, 218 830X (MTC - PVU) December Contingent Upon Resources 953, 972, 994	August Ogden Local 607, 611, 612, F618, 625, 645 South Utah County 821, 822 , 823 , Paratransit Salt Lake County Local 205	August Salt Lake City 2, 2X , 2A, 2B, 220	August Midvalley 47, 50, 227, 240, F590 SLC - Ogden Regional 455, 470, 600 , 609 , 627	August 5600 West 256, F556 , Paratransit Northwest Utah County 806 , 809, Paratransit	4, 17, 31 , 39, 45, 54, 62, F126 , 146 , 201, 209, 218, 223, 236, 248, 509, 513 , 604, 613 , 616 , F618, 626, 627, 631 , 640, 641 , 656 , 831, 833 , 842 , 850, 864 , 871, Paratransit On Demand North Weber County Lehi West Provo <i>Southern Salt Lake County</i> Sandy/Cottonwood Heights West Jordan
Hours: 54,059 Miles: 640,131	Hours: 72,925 Miles: 342,642	Hours: 28,197 Miles: 190,265	Hours: 126,858 Miles: 1,446,047	Hours: 118,588 Miles: 1,195,468	

Font Key:
Bold = new service, *Italics* = changes service, ~~Strikethrough~~ = discontinued service

August 2023
December 2023



Proposed Service Hours: 54,059
Proposed Service Miles: 640,131

August 2023

Park City/Salt Lake City Connect

- Discontinue Routes 901 and 902. High Valley Transit to operate Route 107



August 2023

Bus Rapid Transit in Ogden

- New OGX service replaces route 603 and 650



August 2023

TRAX Service Improvements

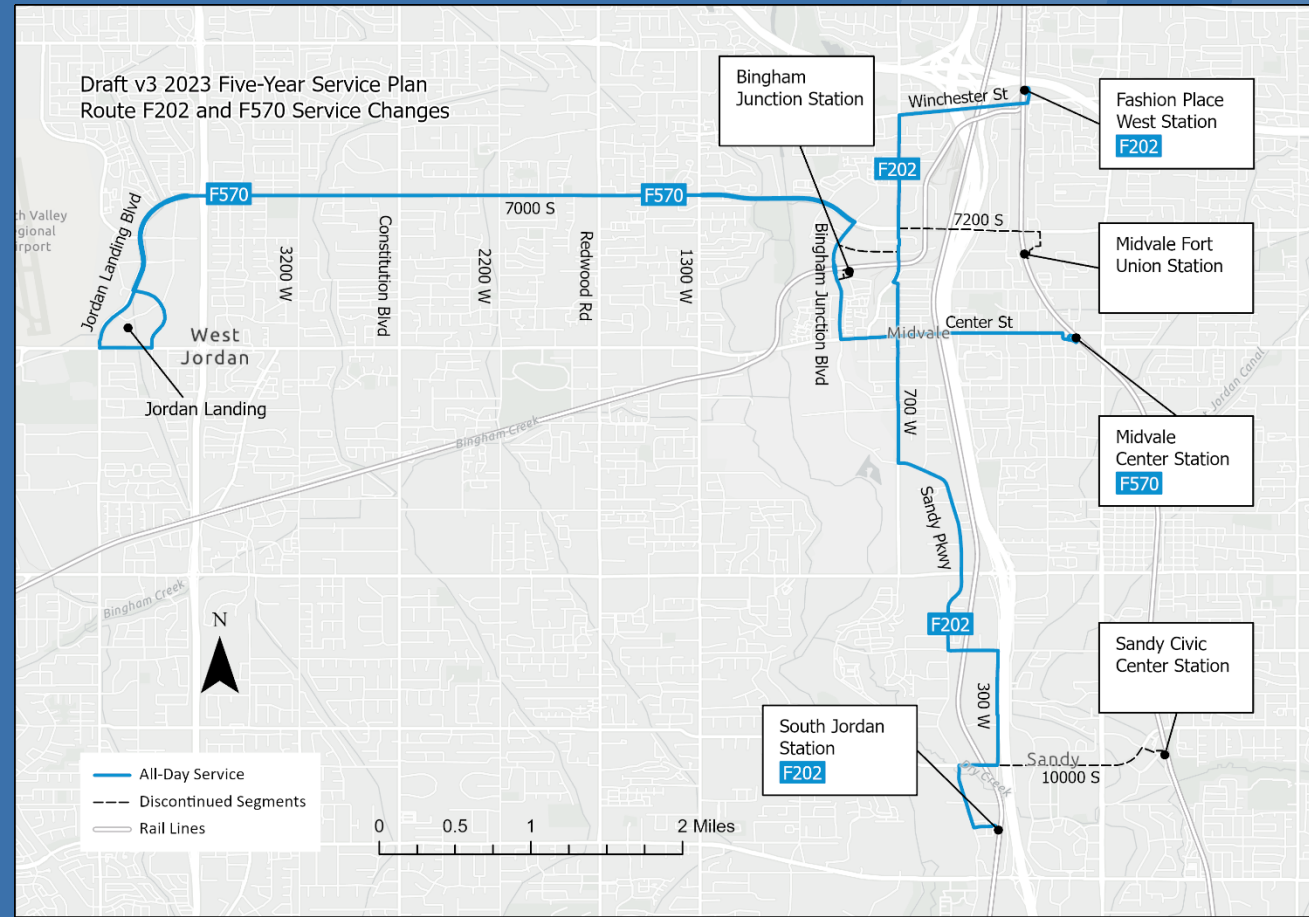
- TRAX and S-Line increased to 15-minute service on Saturdays



August 2023

Flex Route Improvements

- Routes F202 and F570 adjusted to improve reliability, increase coverage
- Additional stops on route F638 within Brigham City



August 2023: Contingent Upon Resources and Needs

Service Improvements

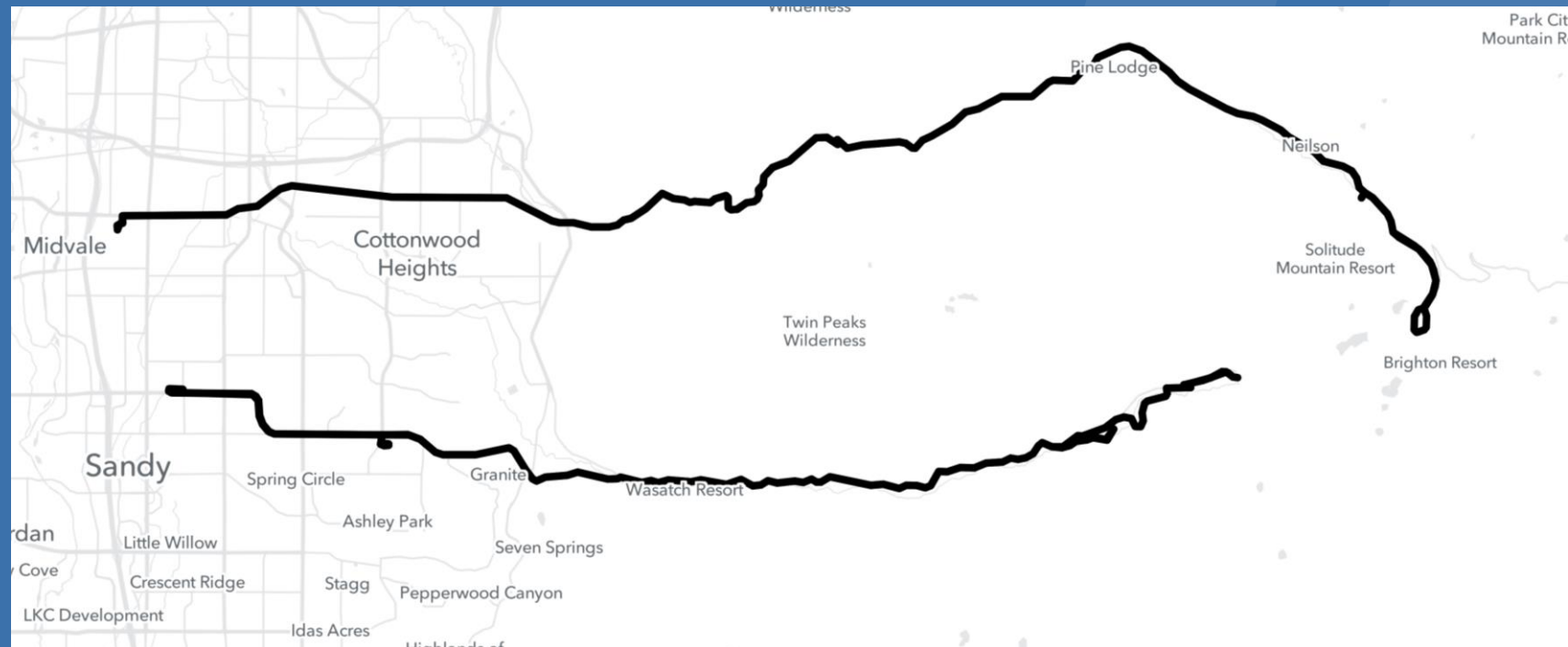
- Restore service on Routes 39, 201, and 218
- Implement UVX service to Provo Airport



December 2023: Contingent Upon Resources

Salt Lake County Ski

- Increase service on Routes 972 and 994
- Implement select trips on Route 953



August 2024

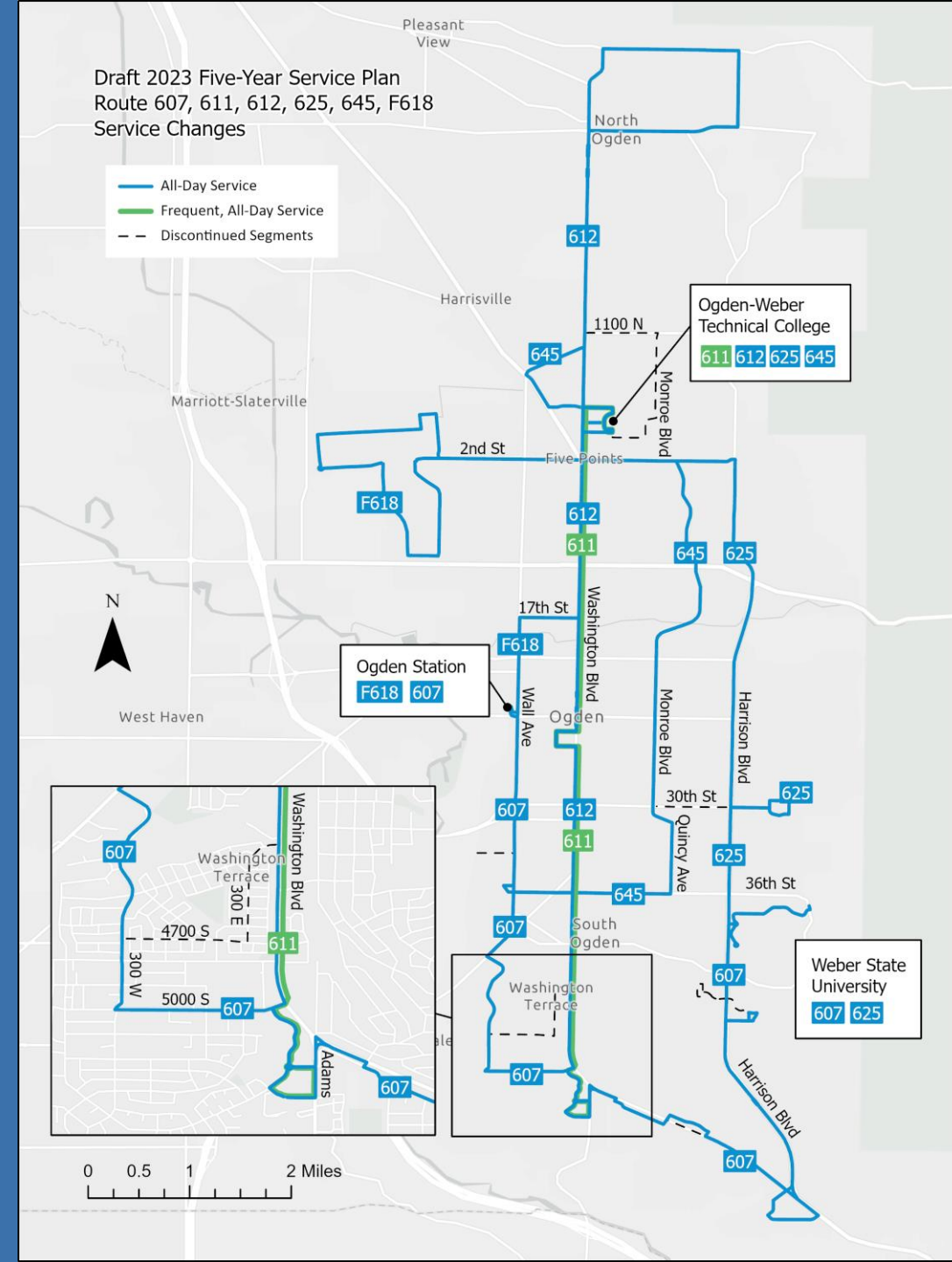


Proposed Service Hours: 72,925
Proposed Service Miles: 342,642

August 2024

Ogden Local

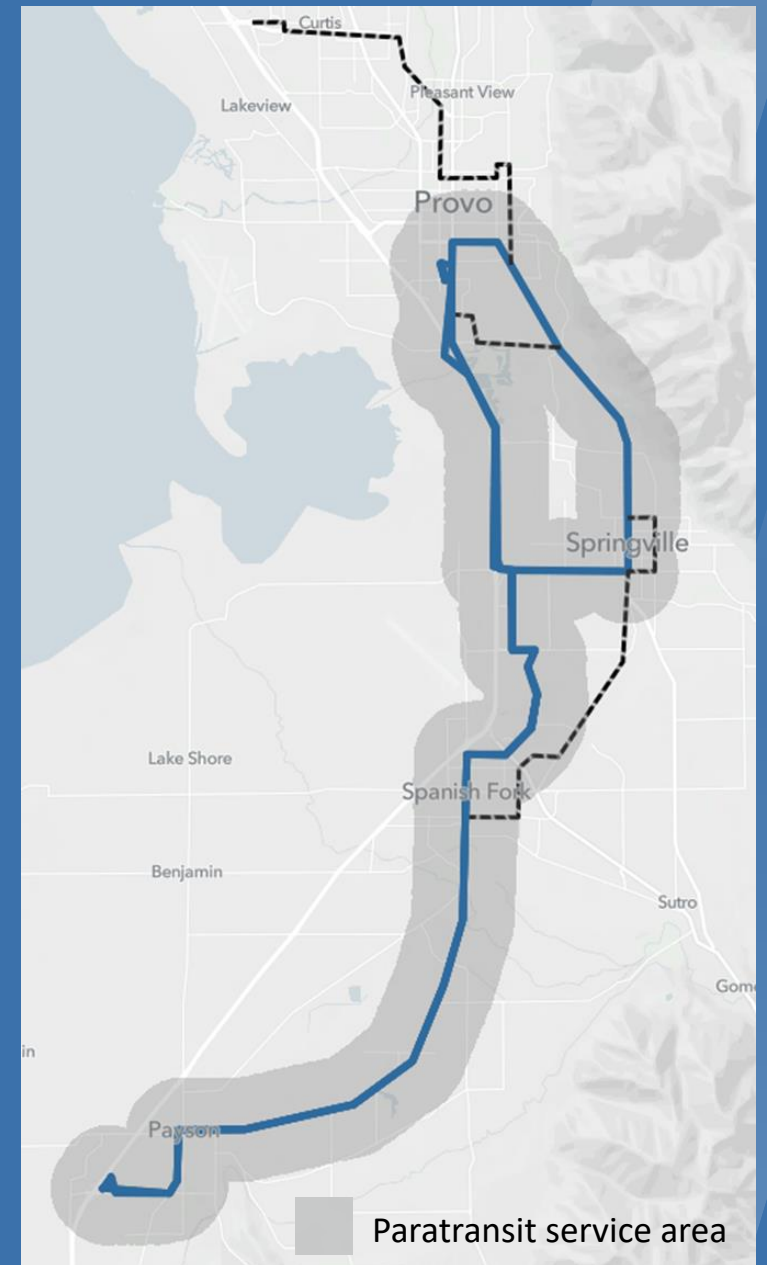
- New route 607 provides one seat ride to Weber State University, Wall Ave and Ogden Station
- New route 611 at 15-minute service weekdays between Washington Terrace and Ogden-Weber Technical College



August 2024

South Utah County

- Routes to Payson, Salem, Spanish Fork, and Springville streamlined to reduce travel time, serve additional destinations
- Adjustments to Paratransit service area

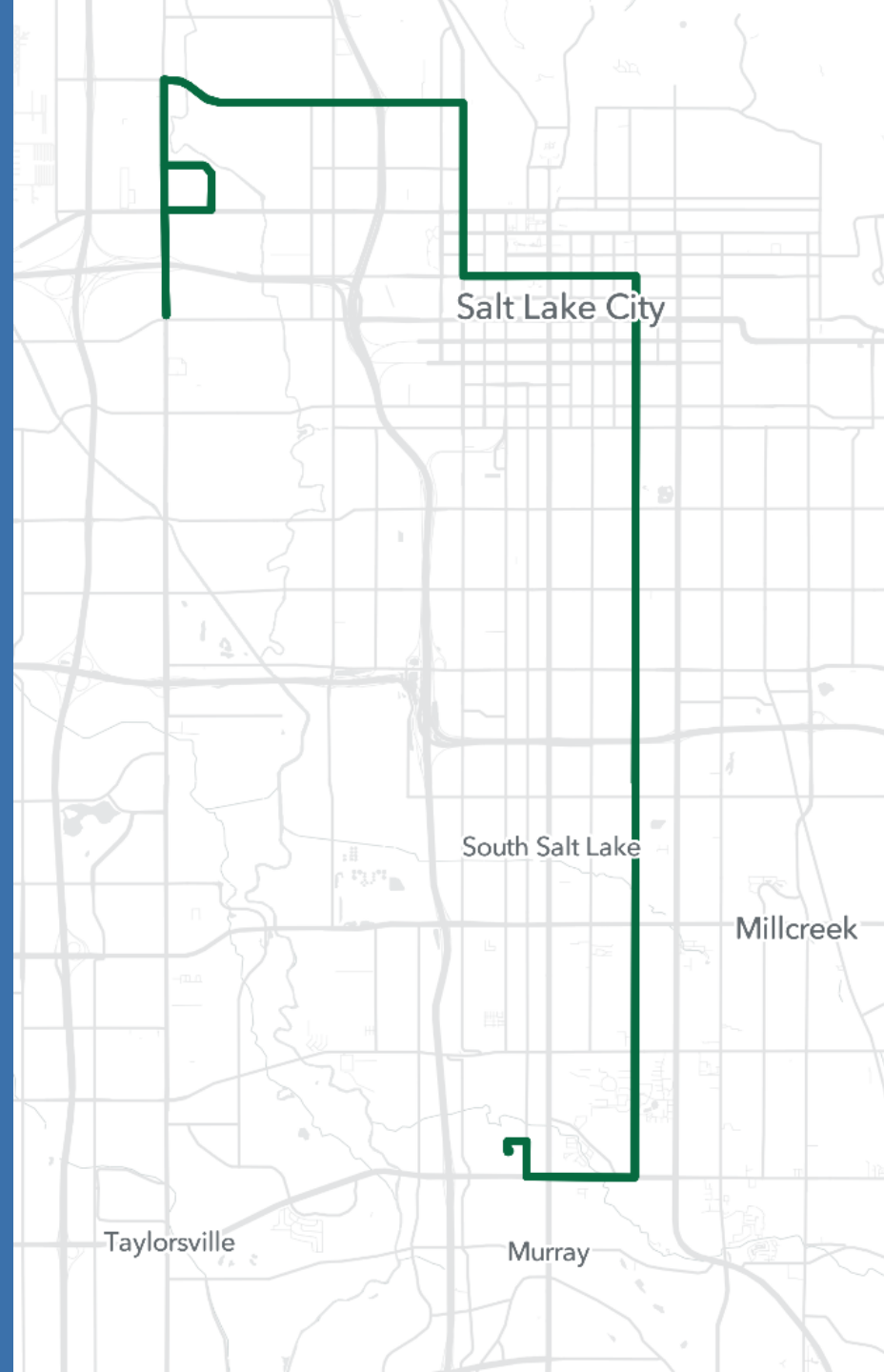


August 2024

Salt Lake County Local

- Increase frequency on Route 205

www.rideuta.com/fyfp



August 2025

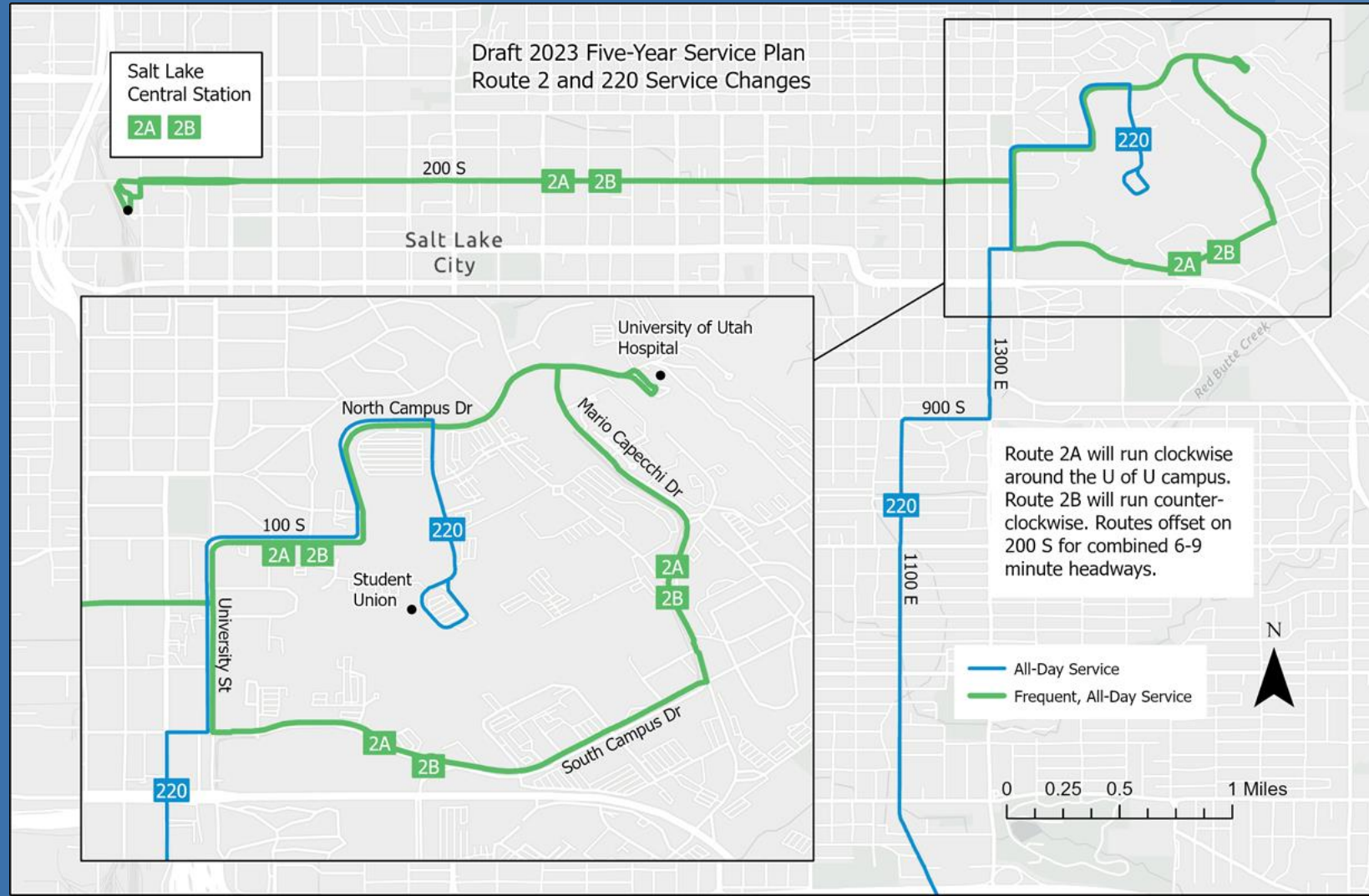
Proposed Service Hours: 28,197
Proposed Service Miles: 190,265



August 2025

Salt Lake City - 200 South and UofU

- End route 220 at the University
- Two new routes replace route 2, with combined 6 – 9 minute service
- Replaces route 2X



August 2026



Proposed Service Hours: 126,858
Proposed Service Miles: 1,446,047

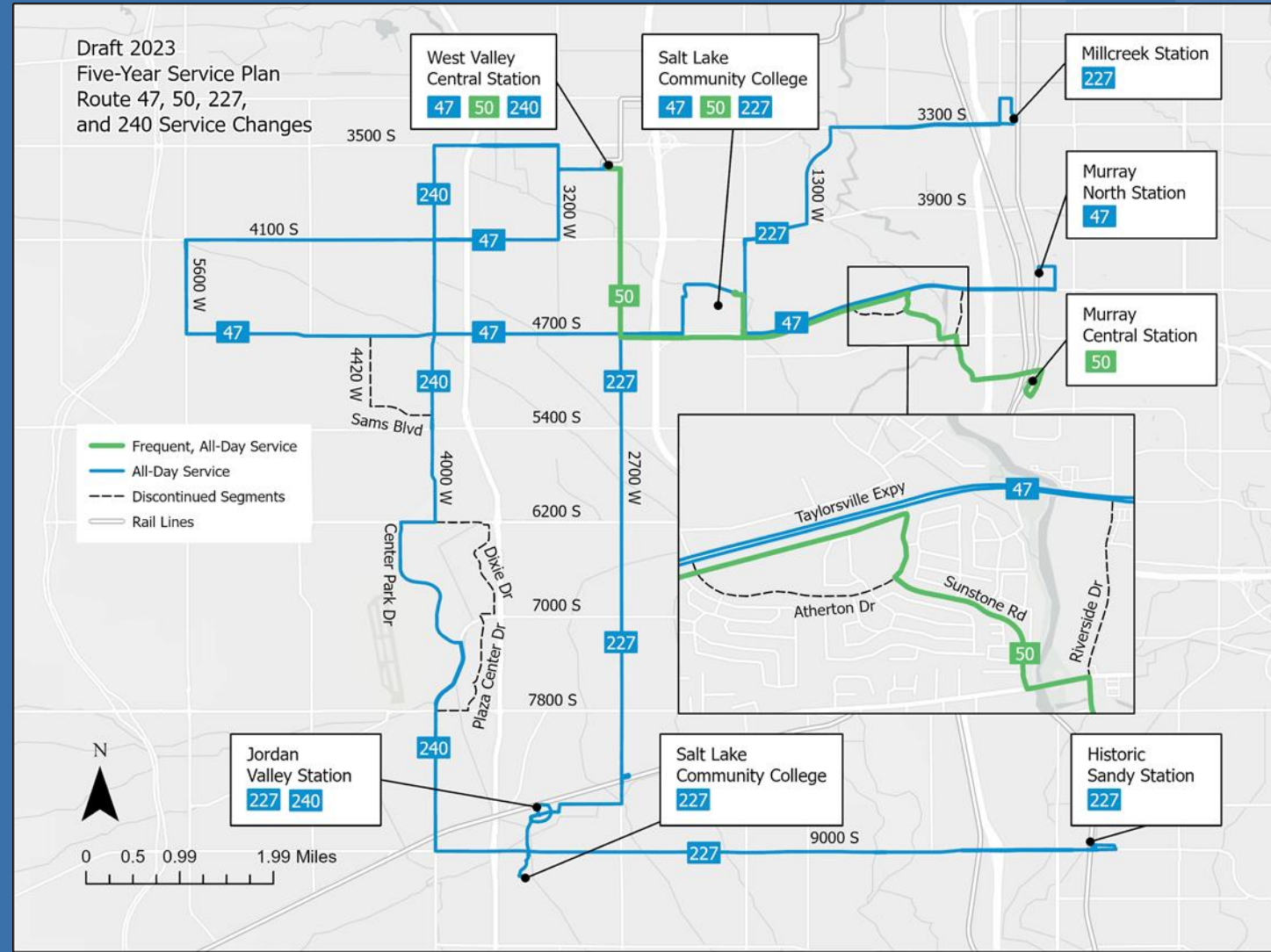
www.rideuta.com/fy26



August 2026

West SL Co - 3500 South to 9000 South

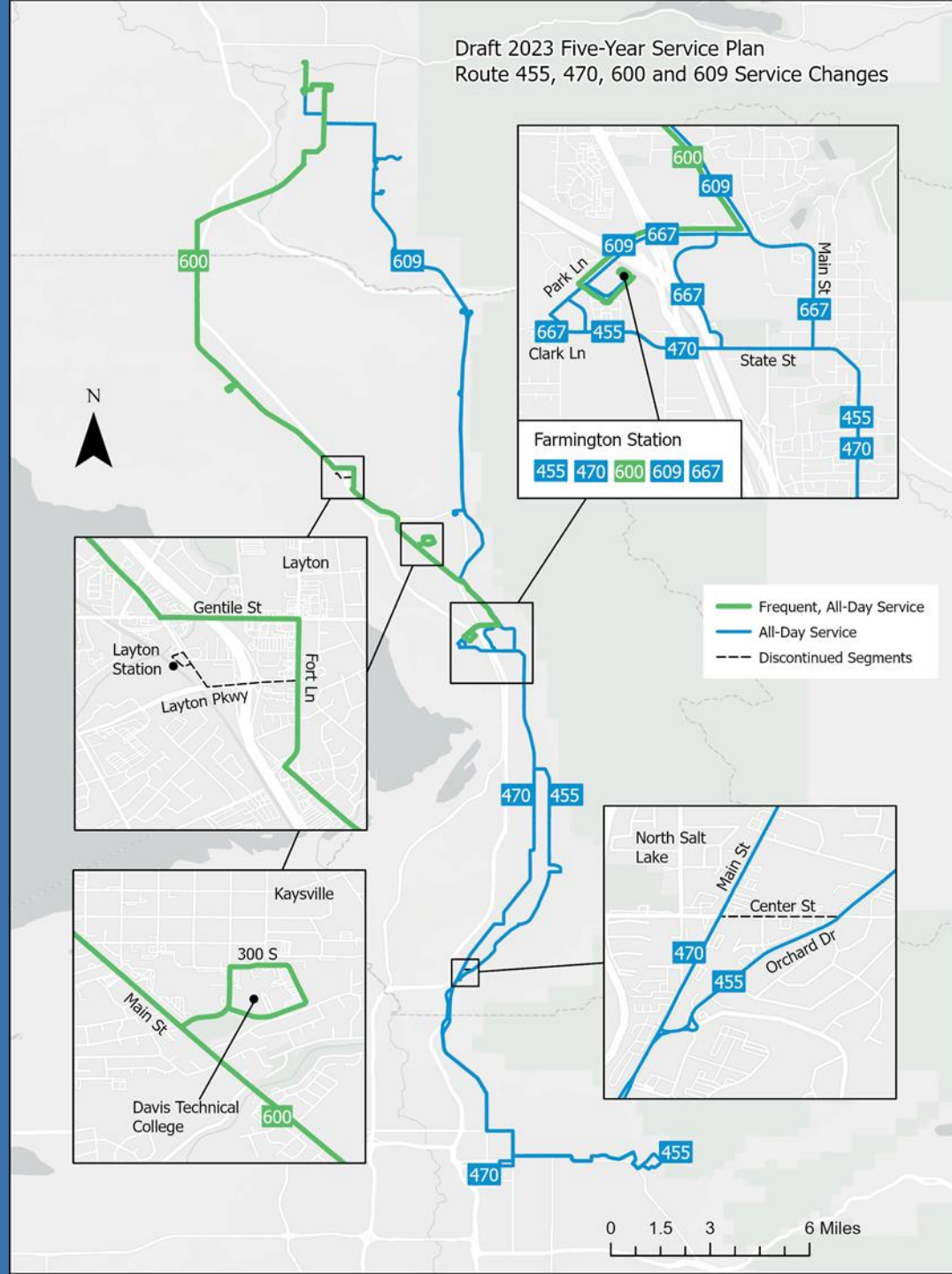
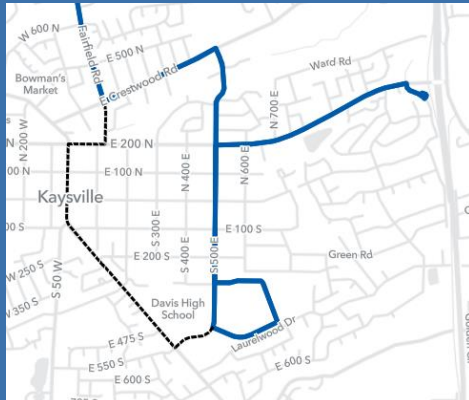
- Route changes to prepare for Midvalley Connector
- Route 227 extended to SLCC-WJ, SLCC-Redwood, and 9000 S



August 2026

SLC - Ogden Regional

- Split the long 455 and 470 routes at Farmington Station
- Northern segment of current 470 (State/Main) increased to 15-minute service
- 627 rerouted for additional connection at Fruit Heights Park 'n' Ride



August 2027

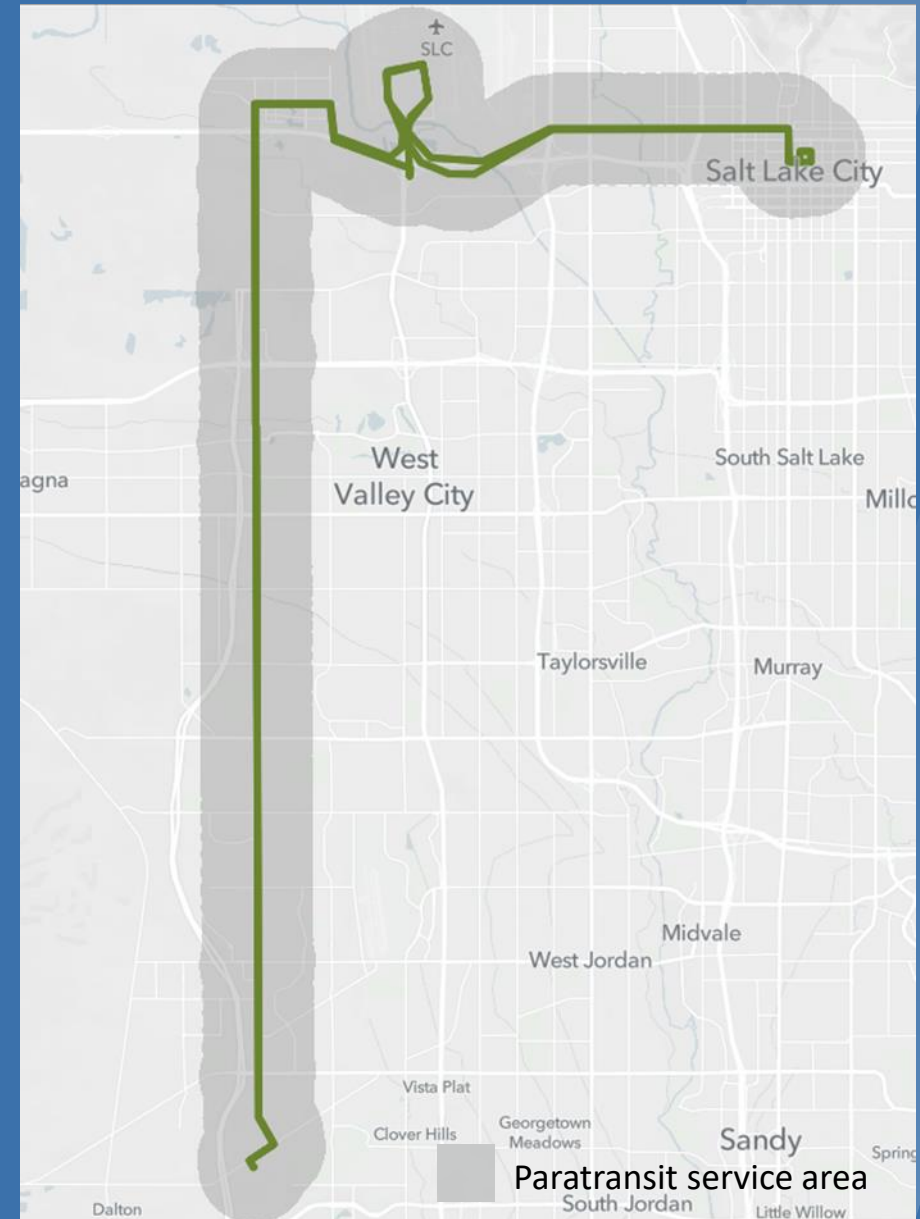


Proposed Service Hours: 118,588
Proposed Service Miles: 1,195,468

August 2027

West SL Co - 5600 W

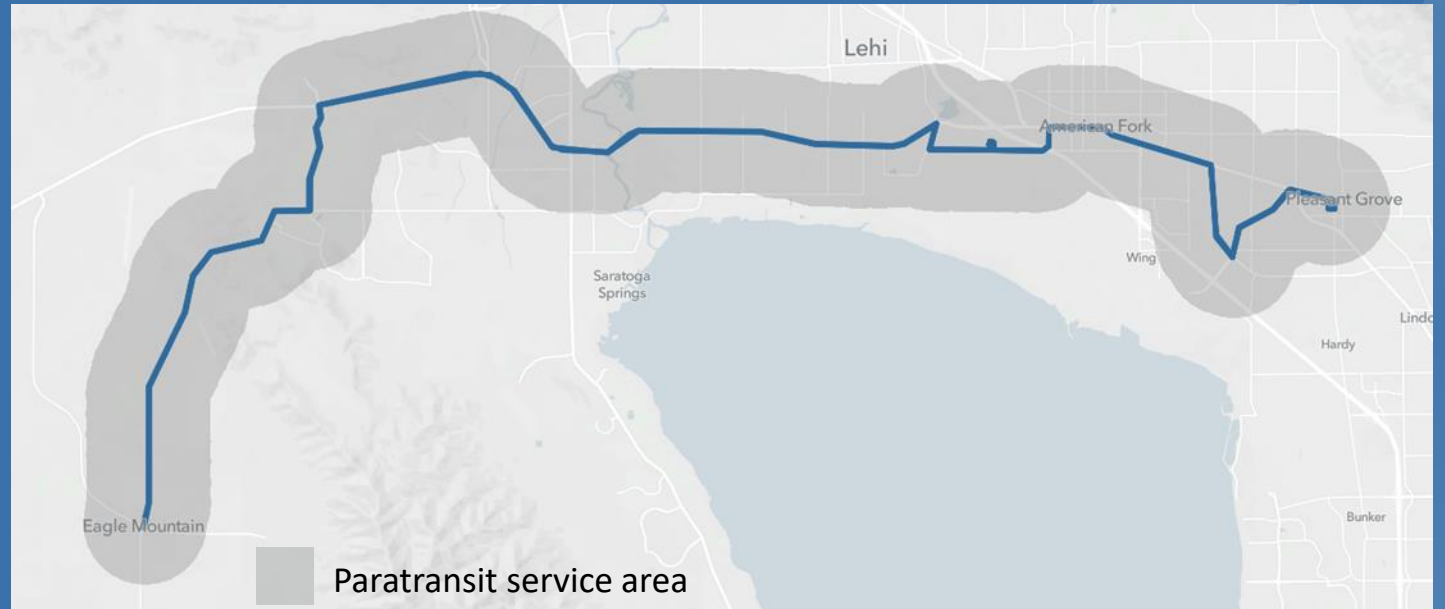
- New frequent service on 5600 W, the International Center, North Temple and Downtown SLC
- Increase to Paratransit Service Area



August 2027

Northwest Utah County

- New service on Pioneer Crossing and Pony Express Parkway
- Route will serve new Park & Ride locations
- Increase to Paratransit service area



VISION

Long Term

UTA Long Range Transit Plan



Vision (Longer Term)

Frequency Improvements

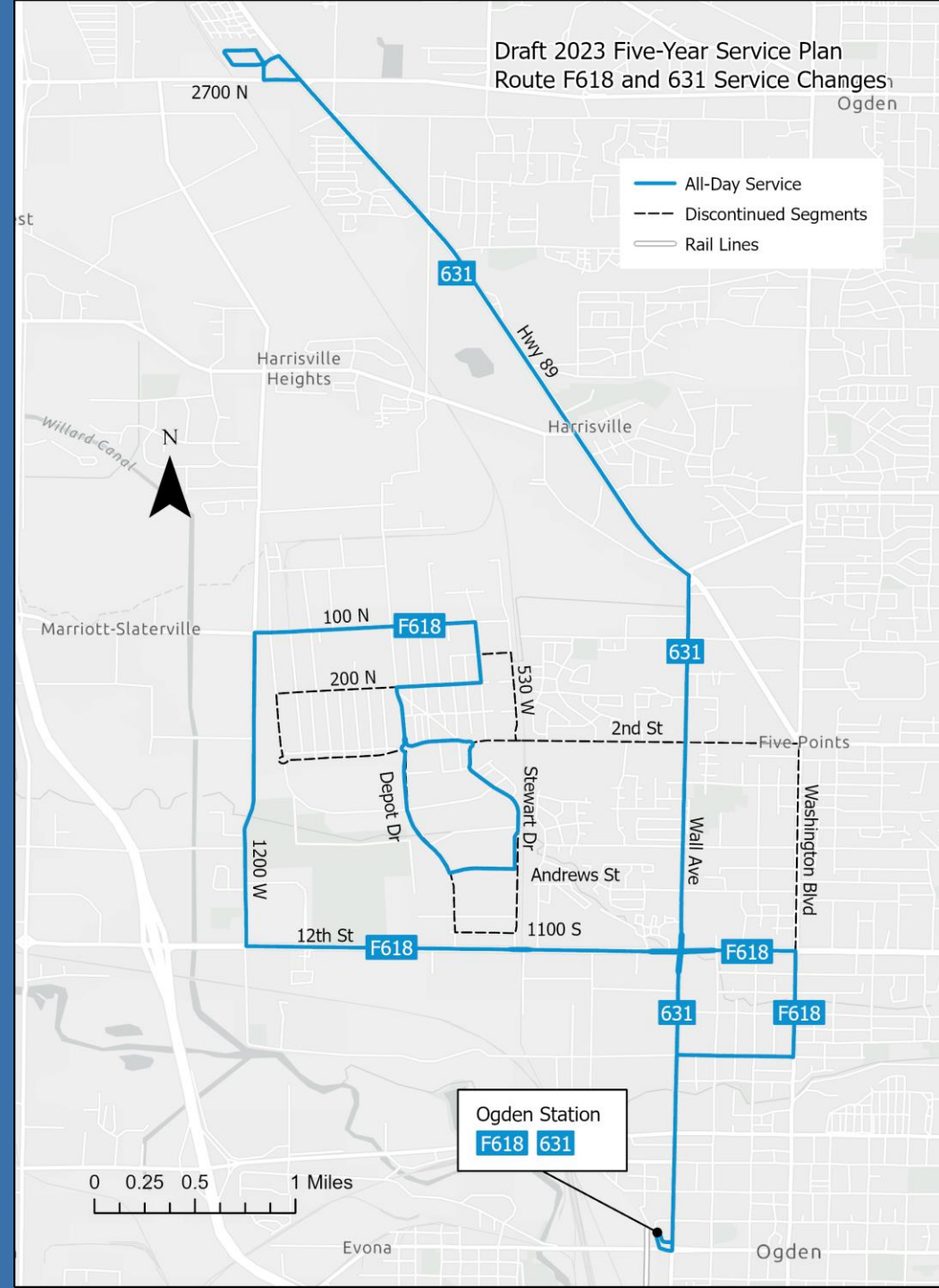
- Improved frequency on Routes 4, 17, 39, 45, 54, 62, 209, 223, and 850



Vision (Longer Term)

BDO and Pleasant View

- Route F618 realigned to serve Business Depot Ogden via 12th St (replaces 613)
- New service between Pleasant View Station and Ogden Station
- Deviation service on route F618 replaces Paratransit in BDO

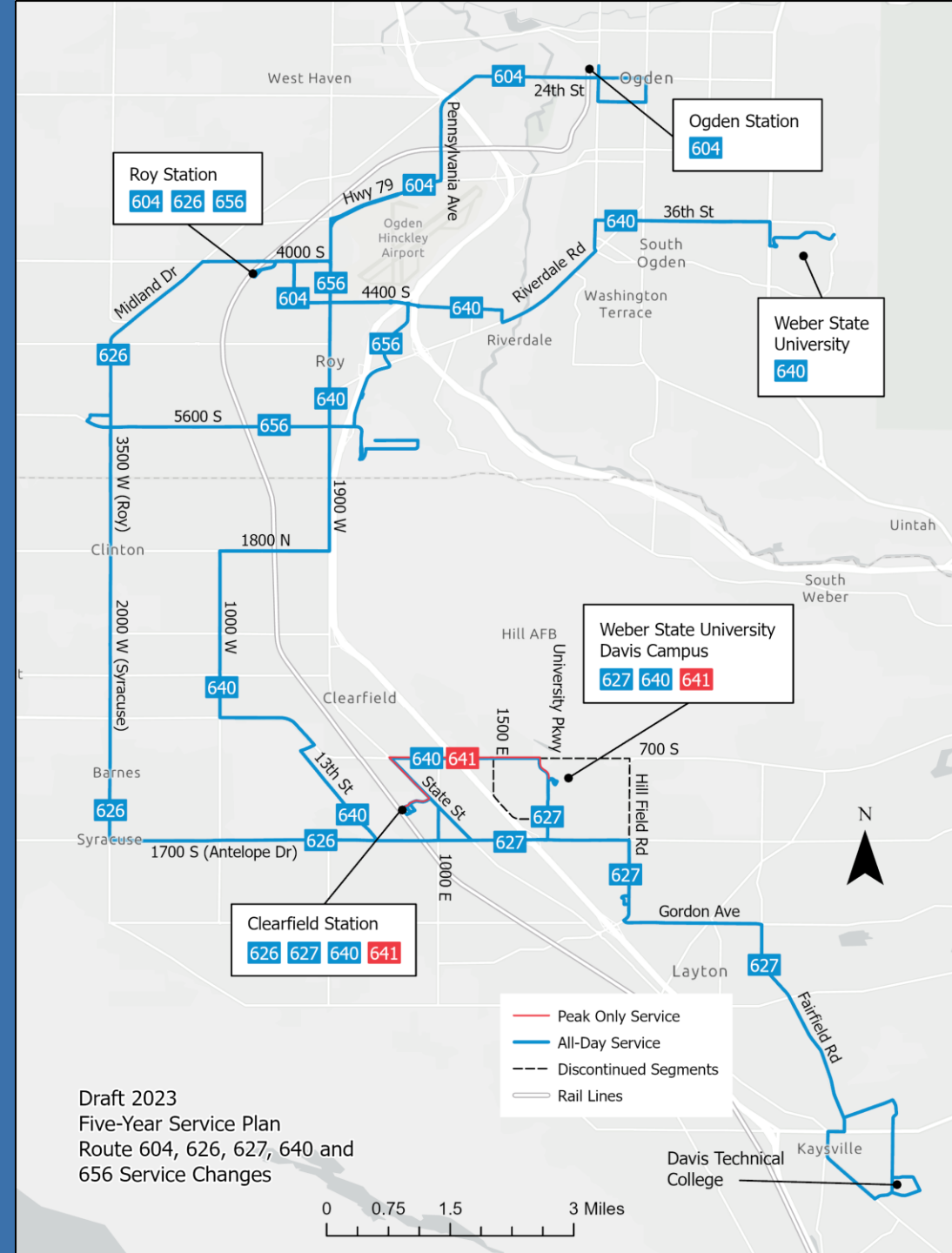


Vision (Longer Term)

North Davis and South Weber County

- New route serving Roy Innovation Center
- Route 626 extended to Roy FrontRunner Station
- Route 627 streamlined to Antelope Dr
- Frequency improvements on routes 604, 626, and 627

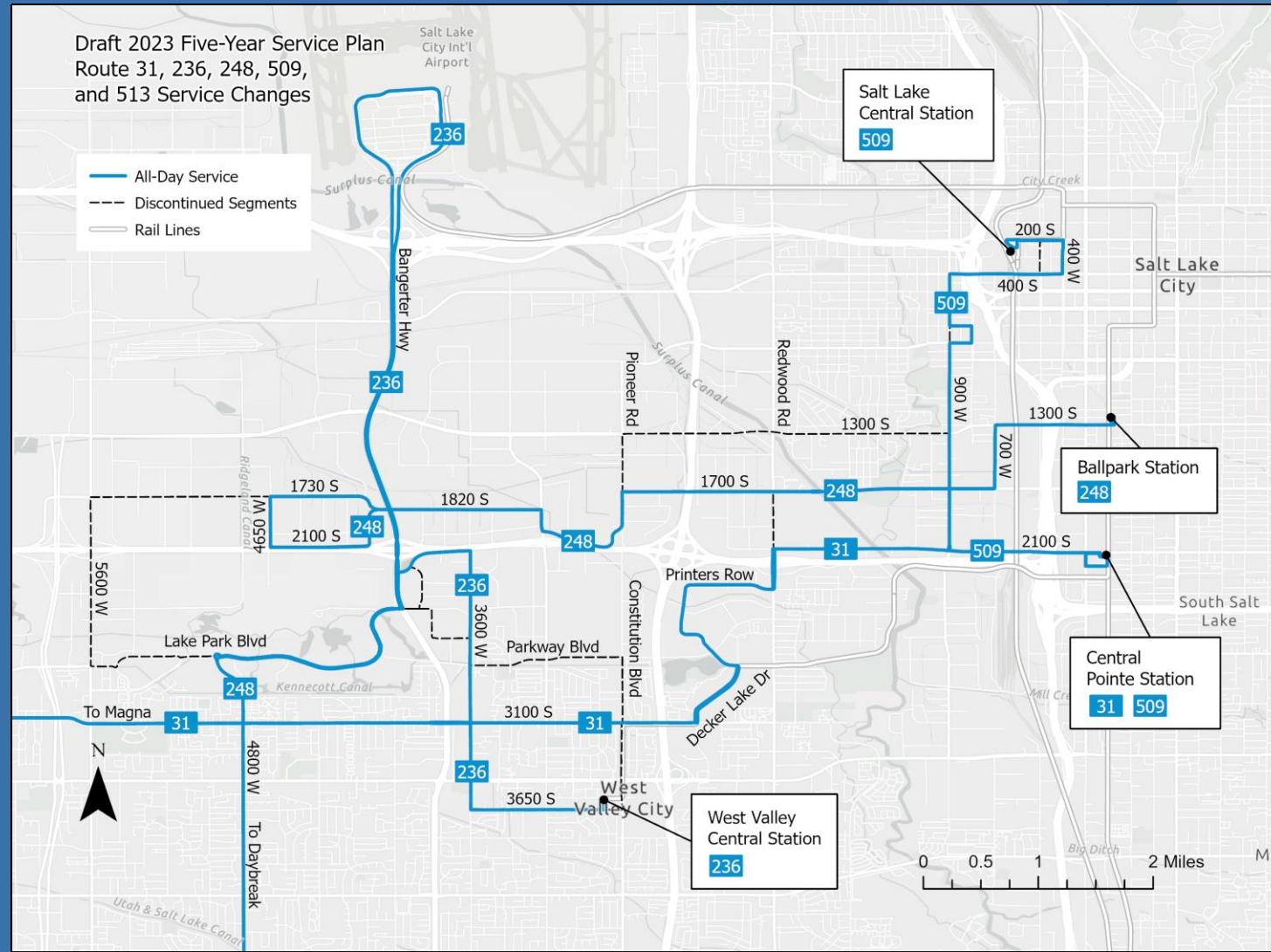
www.rideuta.com/fyssp



Draft 2023
Five-Year Service Plan
Route 604, 626, 627, 640 and
656 Service Changes

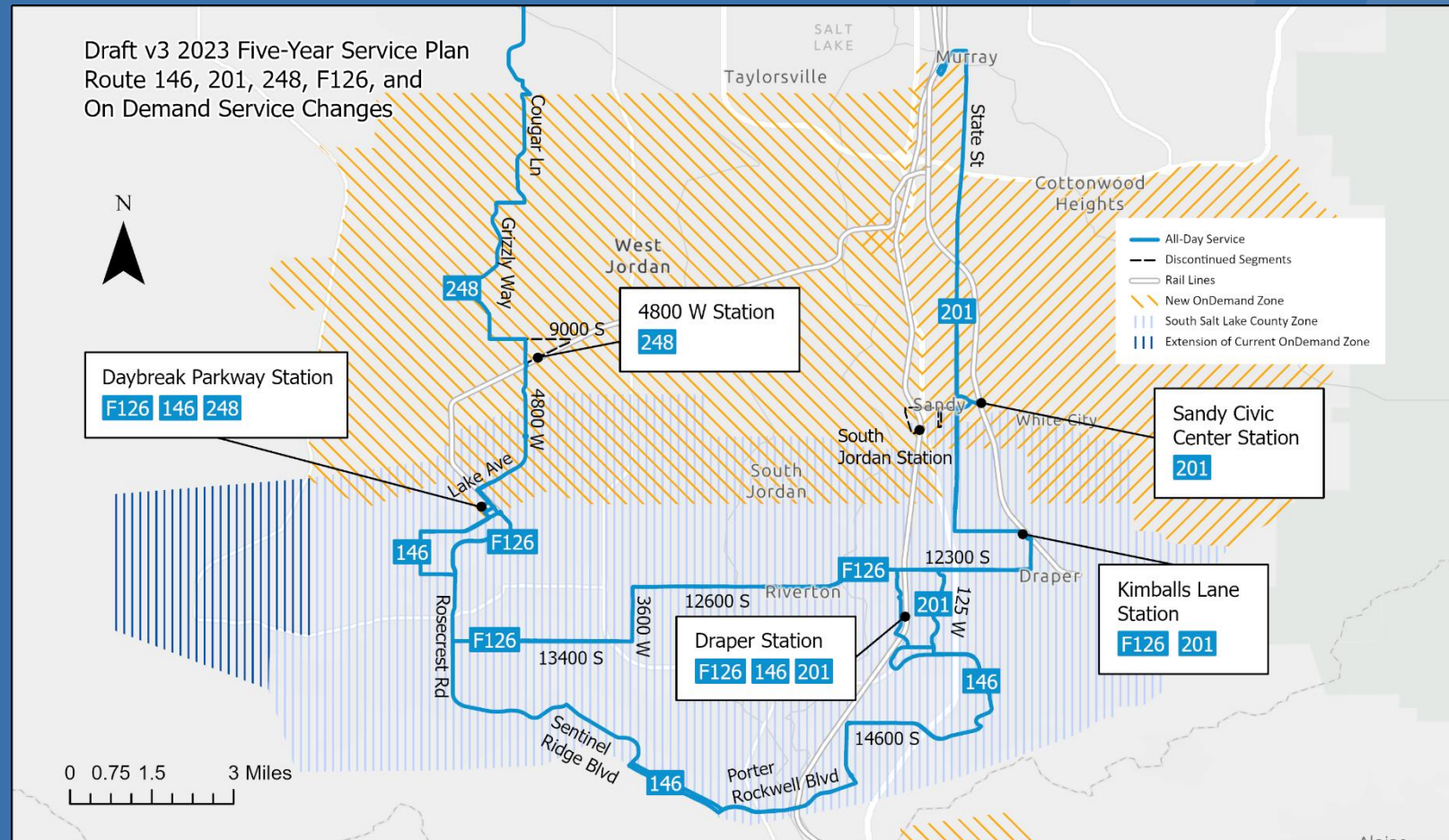
West SL Co – Airport to 3500 S

- New service on 3100 S
- New service on 3600 W between the Airport and WV Central Station
- Route 248 extended to serve Lake Park Corporate Center and 1700 S (replaces 513)



South Salt Lake County

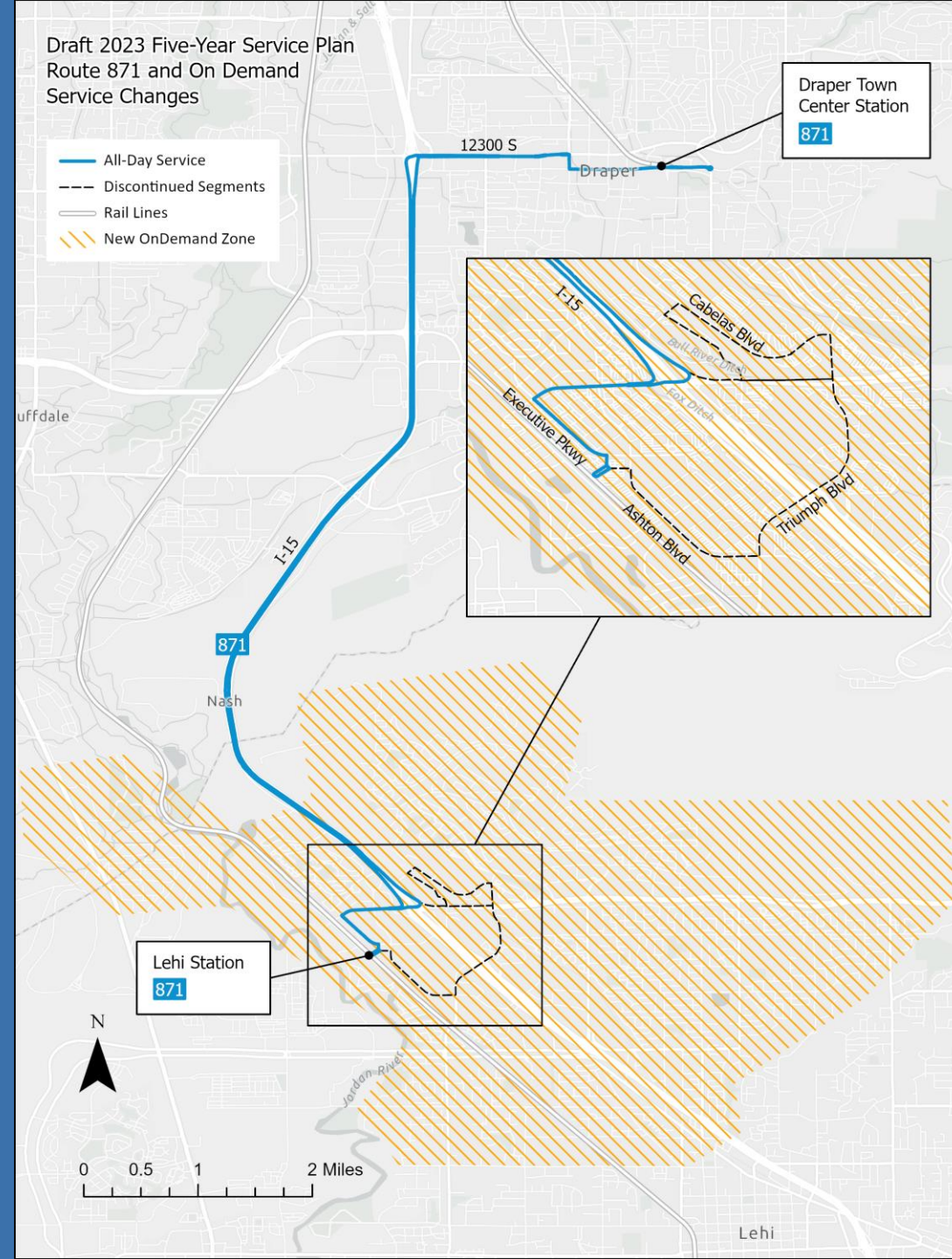
- New UTA On Demand Zones
- Increased Fixed Route service to handle demand
- Increased Paratransit coverage



Vision (Longer Term)

Utah County - Lehi

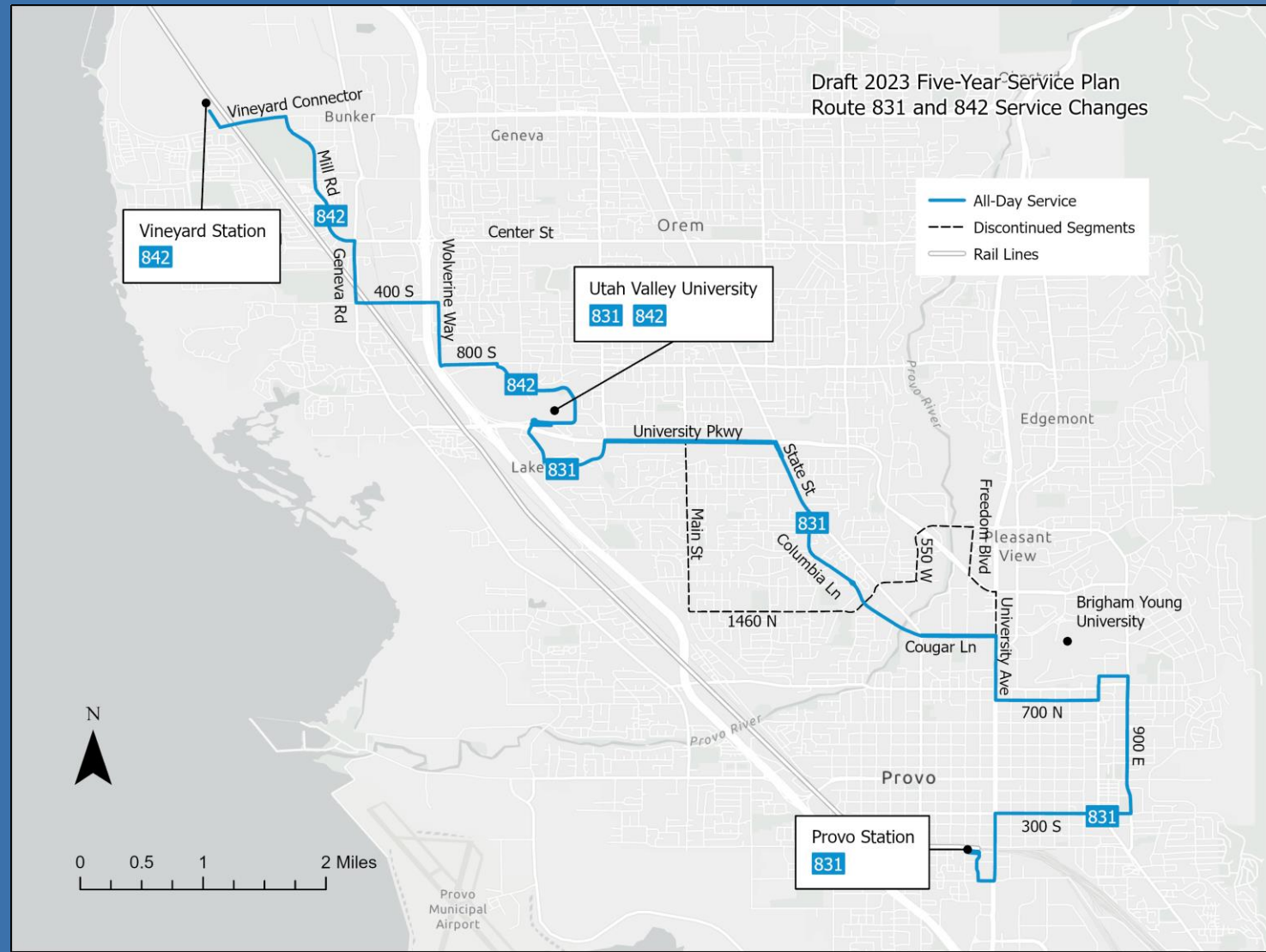
- New UTA On Demand Zone
- Route 871 streamlined between Lehi FrontRunner Station and Draper Town Center Station. Improved frequency.



Vision (Longer Term)

Utah County – Vineyard to Provo

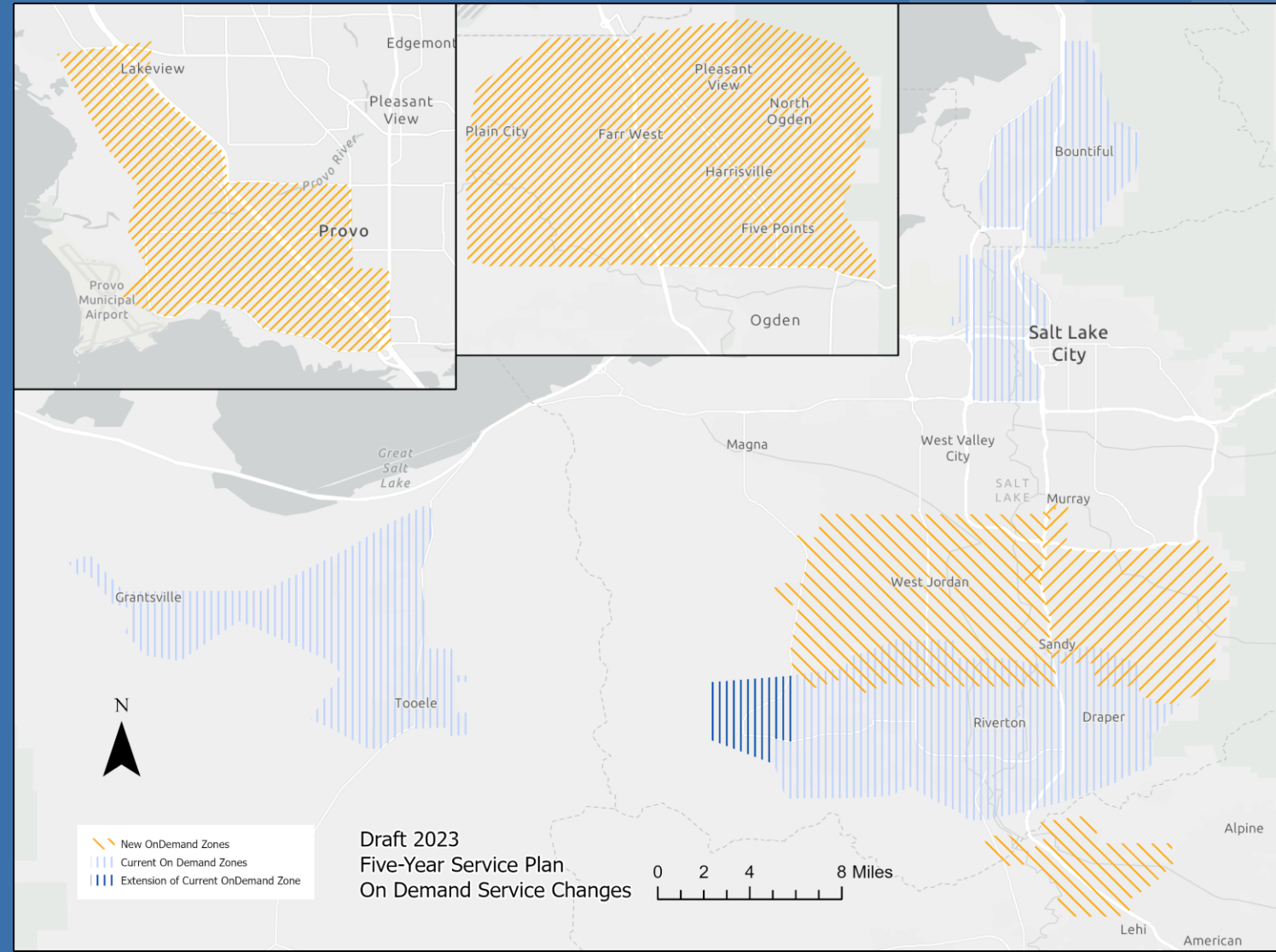
- Route 831 realigned to Columbia Ln and State St
- New service between Vineyard Station and UVU



Vision (Longer Term)

UTA On Demand

- New zones in north Weber County, Sandy, Cottonwood Heights, South Jordan, West Jordan, Lehi, and West Provo



Vision

Future Projects



Paratransit Forward



FrontRunner Forward

NEXT STEPS

Timeline



QUESTIONS & DISCUSSION

Recommended Action (by acclamation)

Motion to approve AR2023-02-01 – Resolution Approving the Proposed
2023-2027 Five-Year Service Plan and Recommending Adoption by the Authority's
Board of Trustees



TRANSIT-ORIENTED DEVELOPMENT CONSULTATION



**AR2023-02-02 – Resolution
Approving and Recommending
Adoption of the Station Area Plan
for Farmington Utah**

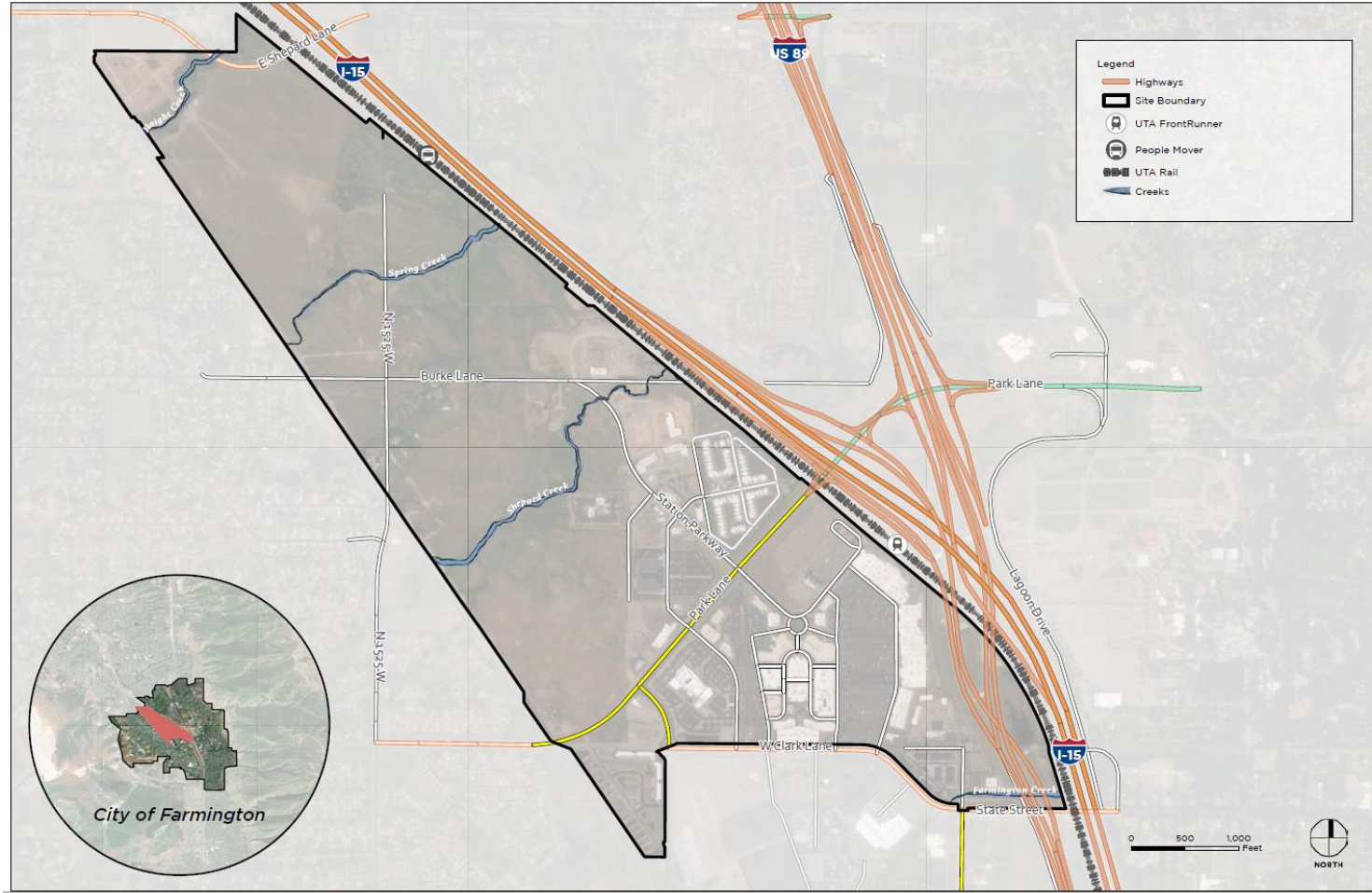


Farmington Station Area Plan

- **Funded by Wasatch Front Regional Council (WFRC), through the Transportation Land Use Connection (TLC) Program**
- **Plan adopted by Farmington City and certified by WFRC in Q4 of 2022**



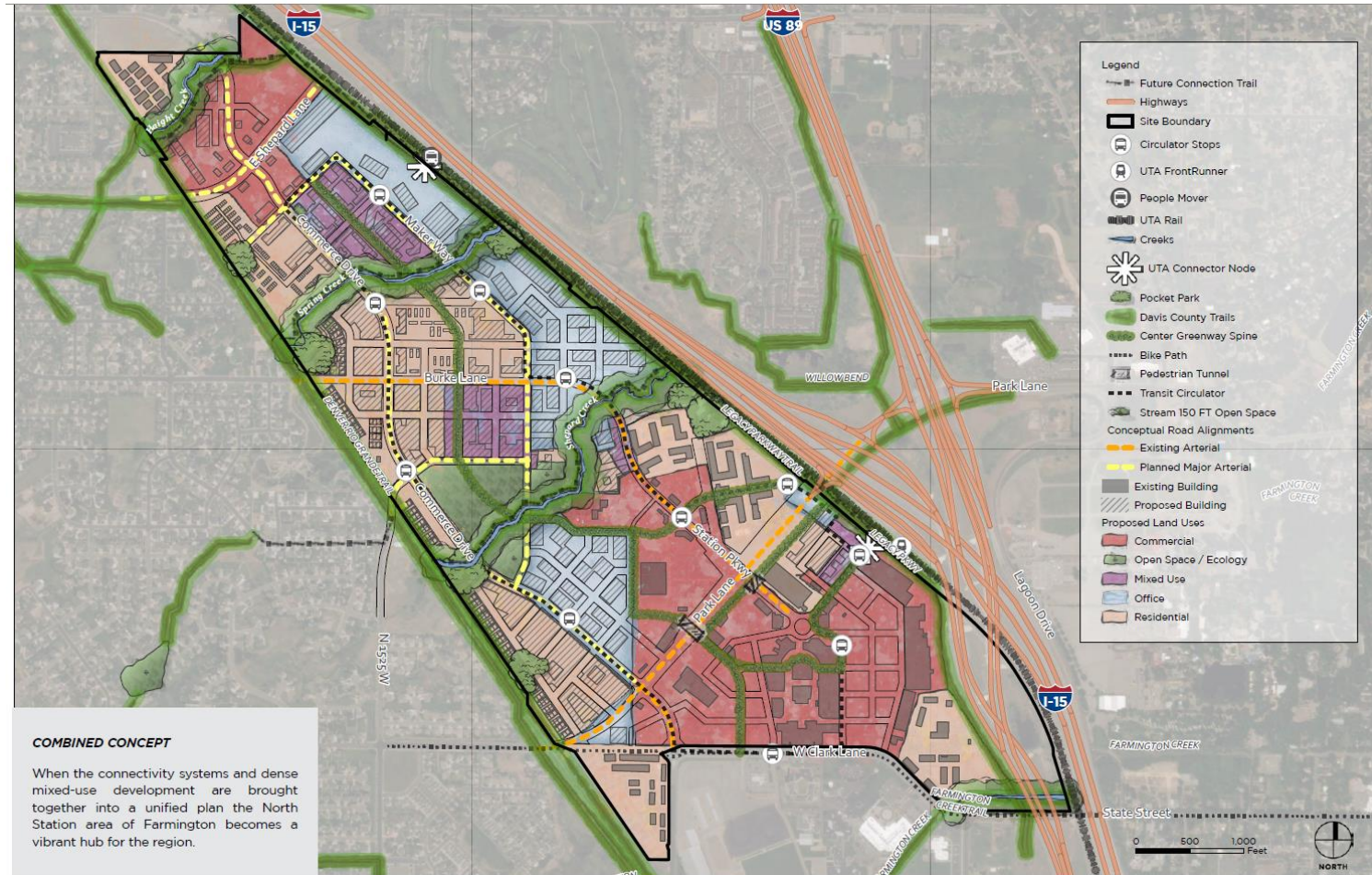
Farmington Station – Plan Area



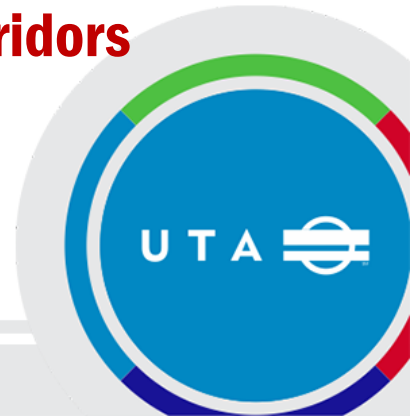
- **550 Acres**
- **Initially intended as a small area plan for properties north of Park Lane**
- **Southern portion added to better understand and improve station access**



Farmington Station – Plan Overview



- Well-connected grid of streets, trails, and bike paths
- Mix of Residential, Office, Retail, and Open Space
- UTA Connector nodes
- Preservation of natural riparian corridors

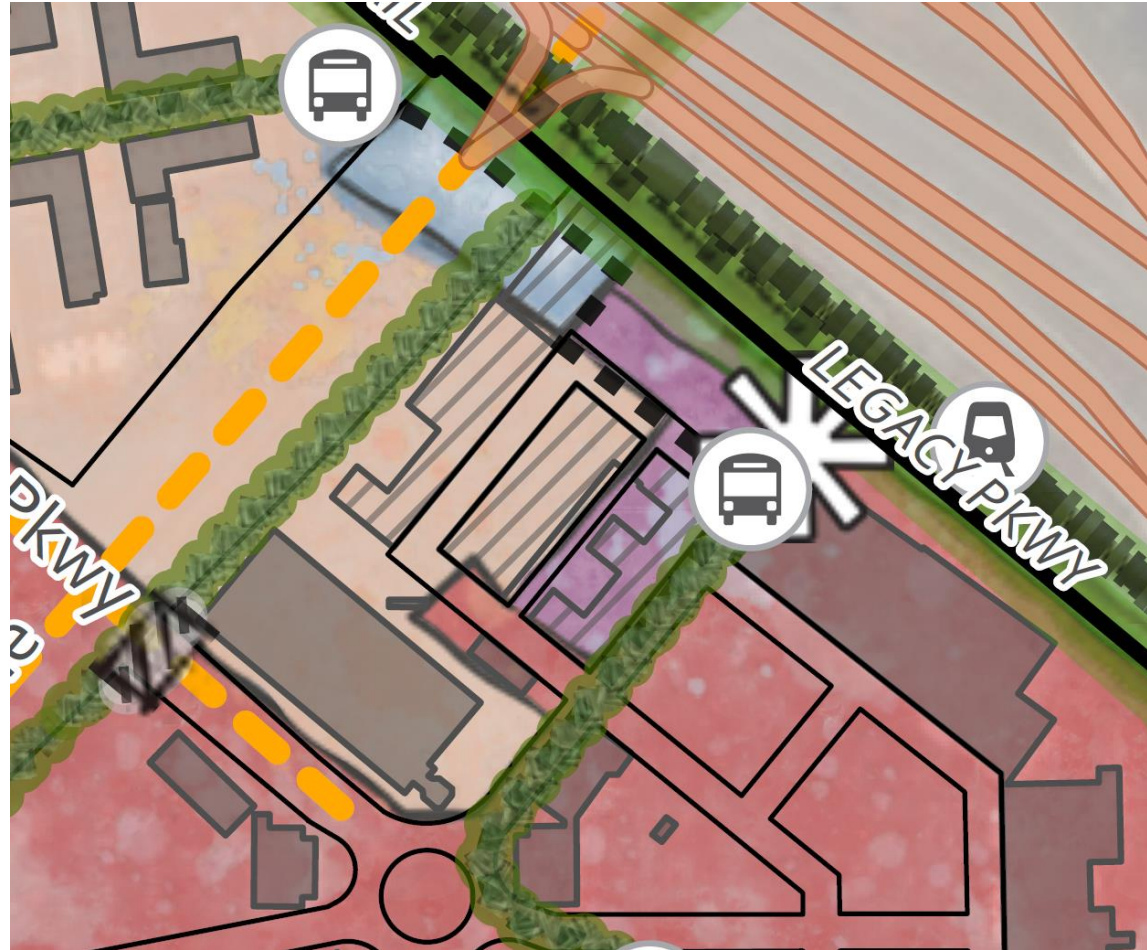


Farmington Station – UTA Property

- **8.6 Acres**
- **Current Use:**
Park & Ride lot (853 stalls)

Recommendation:

- **264 park & ride stalls**
(match pre-pandemic demand)
- **Mixed-Use, Residential, Commercial land uses:**
 - **Office: 150,000 sf**
 - **Retail: 36,000 sf**
 - **Residential: 330 units**



Questions & Comments



Recommended Action (by acclamation)

Motion to approve AR2023-02-02 – Resolution Approving and Recommending Adoption of the Station Area Plan for Farmington Utah



**AR2023-02-03 – Resolution
Approving and Recommending
Adoption of the Station Area Plan
for Lehi Utah**



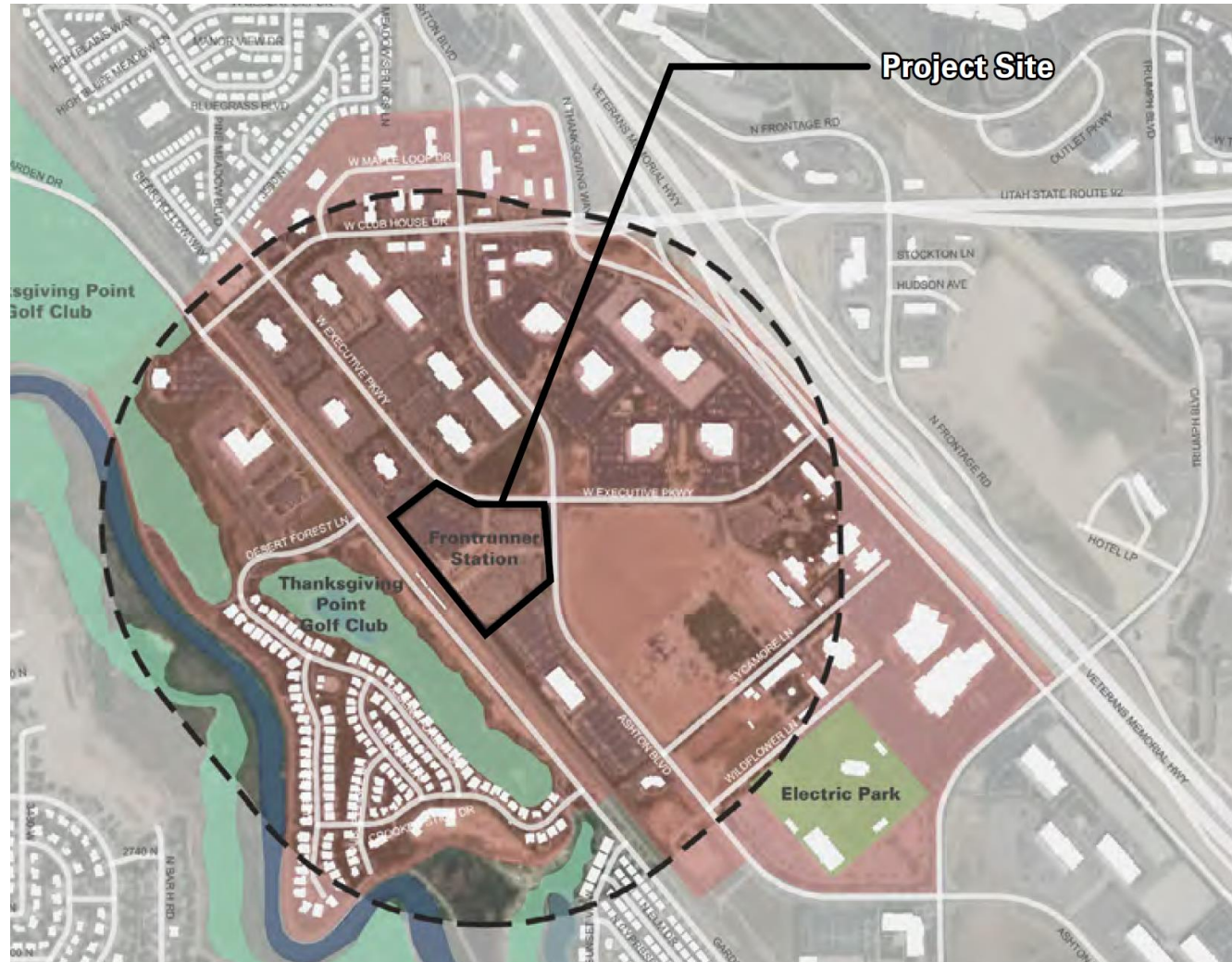
Lehi FrontRunner Station Area Plan



- **Funded by UTA and Lehi City**
- **Collaboration with Thanksgiving Point developers**
- **Officially adopted by Lehi City in Q1 2023.**



Lehi FrontRunner Station – Plan Area



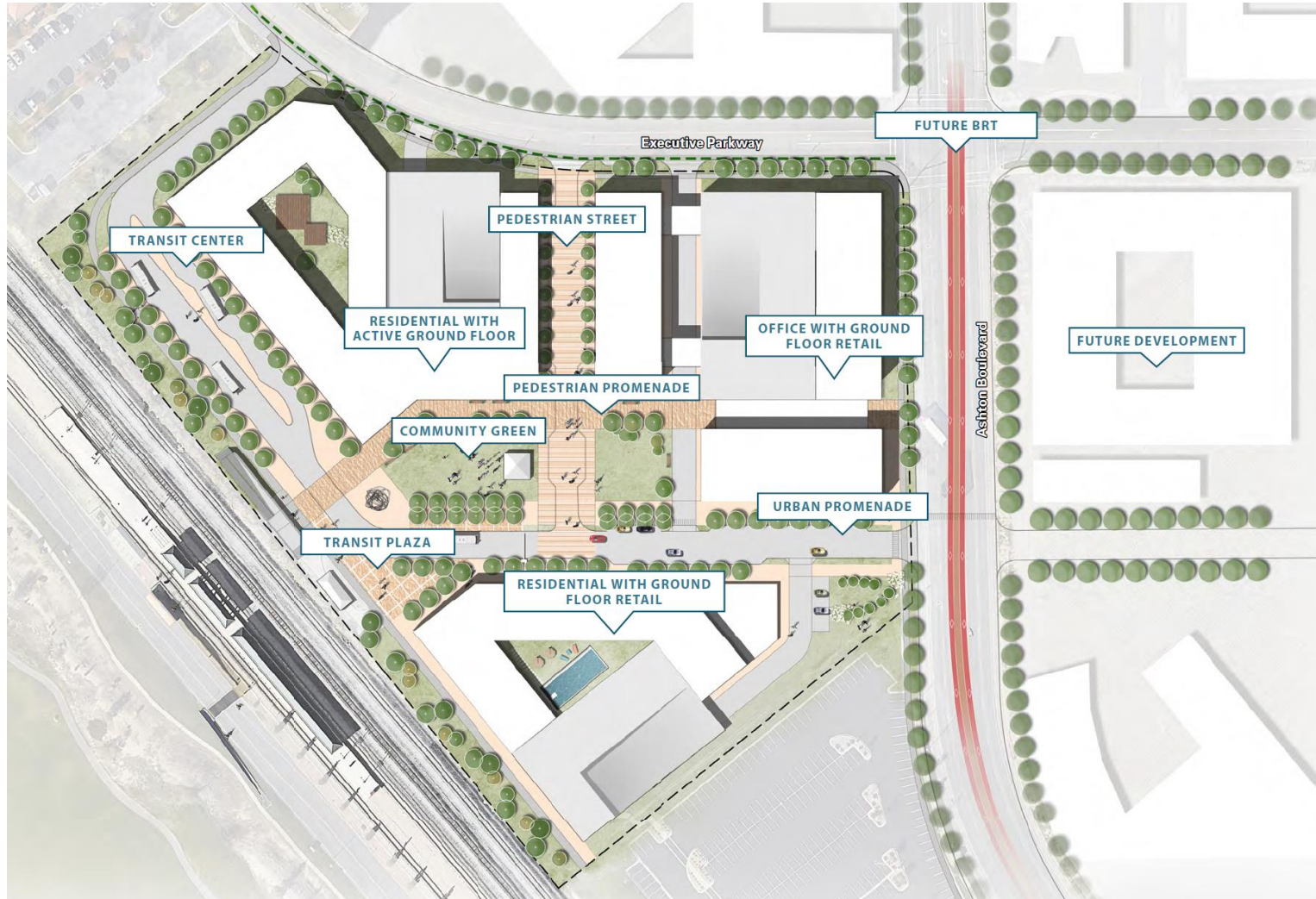
- **Approximately ½ mi from Lehi Frontrunner Station**
- **Includes much of Thanksgiving Point**

UTA Property

- **11 Acres**
- **Currently used as a park & ride facility**

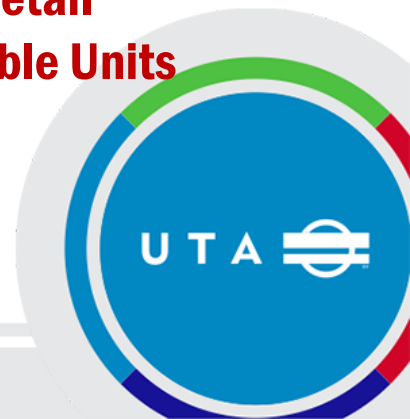


Lehi FrontRunner Station



Recommendation:

- **300 park & ride stalls**
- **Configure bus loop to accommodate future transit (mode TBD)**
- **Align intersections and pedestrian walkways with proposed Thanksgiving Point development**
- **Development Data:**
 - **270,000 SF Office**
 - **47,000 SF Retail**
 - **200 Affordable Units**



Questions & Comments



Recommended Action (by acclamation)

Motion to approve AR2023-02-03 – Resolution Approving and Recommending Adoption of the Station Area Plan for Lehi Utah



BUDGET & FINANCE CONSULTATION



2023 Budget Amendment #1 - Capital



Summary of Request

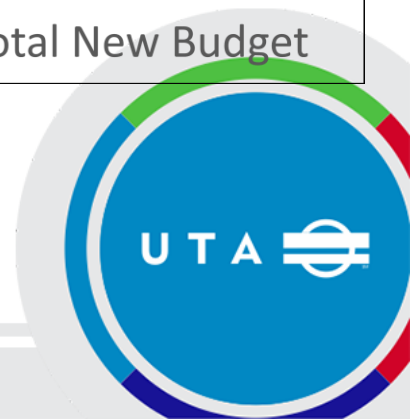
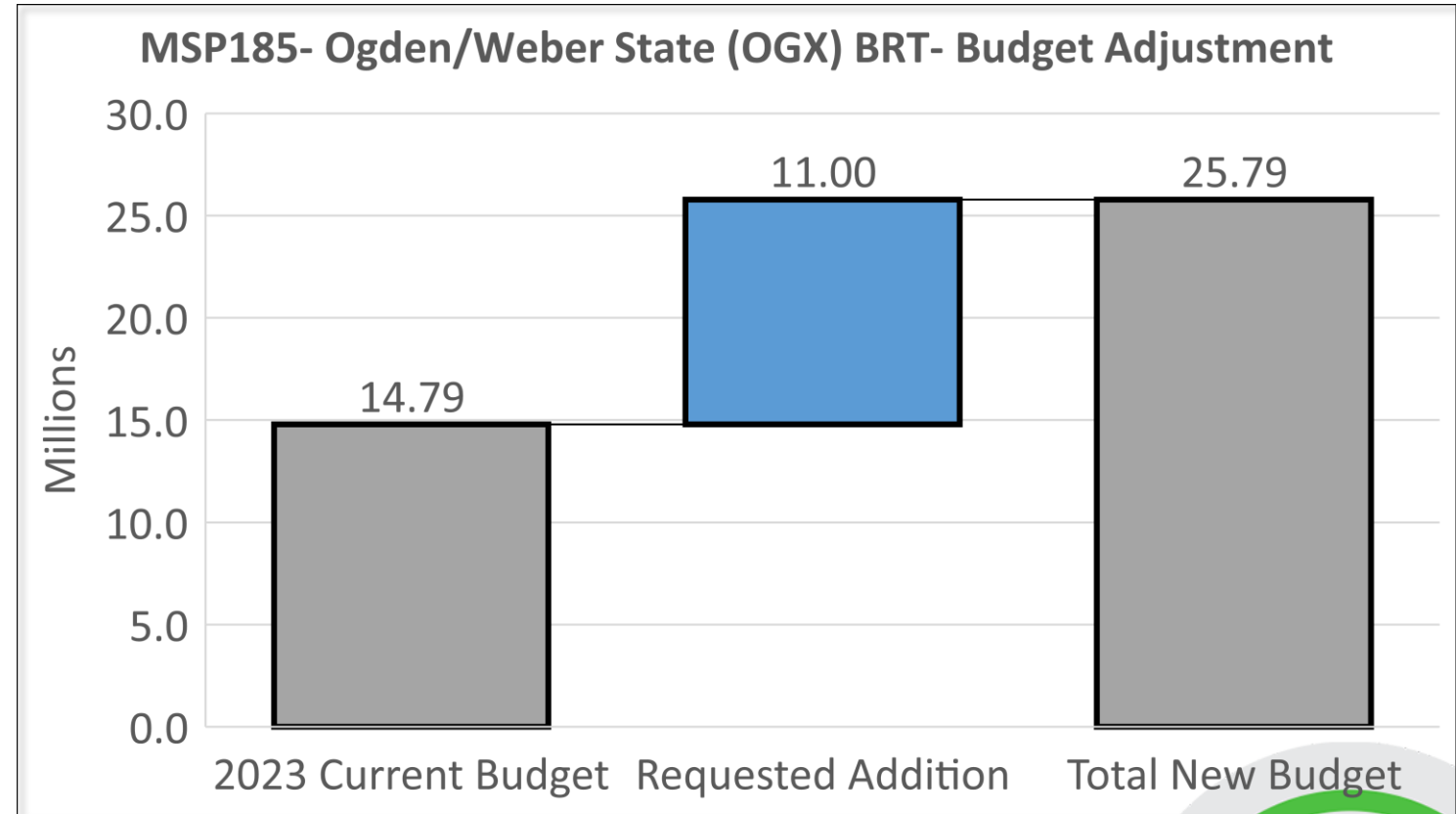
Request seeks to:

- Add \$11 M to the MSP185- Ogden/Weber State (OGX) BRT Project
- This corrects a budget preparation oversight and recognizes additional funding available to the project:
 - Additional fund request is 100% revenue backed from new and existing grants
 - Used to complete the project construction activities and be available for potential property resolutions needed to finish out construction.
- This action is fully revenue backed and does not impact UTA fund balances



MSP185- Ogden/Weber State (OGX) BRT Project

- Request seeks to add funding to advance and complete project
- Request adds \$11 M to the overall project budget.
- Funding Sources include:
 - ARPA and Small Starts Grants
 - Local Match



Questions



DISCUSSION



Legislative Priorities



Open Dialogue with the Board of Trustees



COUNCIL BUSINESS



**AR2023-02-04 – Resolution of the
Local Advisory Council of the Utah
Transit Authority Appointing
Council Officers for the Year 2023**



2023 UTA Local Advisory Council Officers

- In 2022, Resolution AR2022-02-01 established a succession of officers for 2023 appointing;
 - ✓ Mark Johnson as Chair
 - ✓ Troy Walker as Vice-Chair
 - ✓ New nominee for Second Vice-Chair to be elected by the Council
- The Council may nominate and elect a new Second Vice-Chair



Recommended Action (by acclamation)

Motion to approve AR2023-02-04 – Resolution of the Local Advisory Council of the Utah Transit Authority Appointing Council Officers for the Year 2023 with _____ as the new Second Vice-Chair



REPORTS & OTHER BUSINESS



Executive Director Report

- 2022 Year-End Ridership Report
- NBA All-Stars Service Update



2022 Year-End Ridership Report

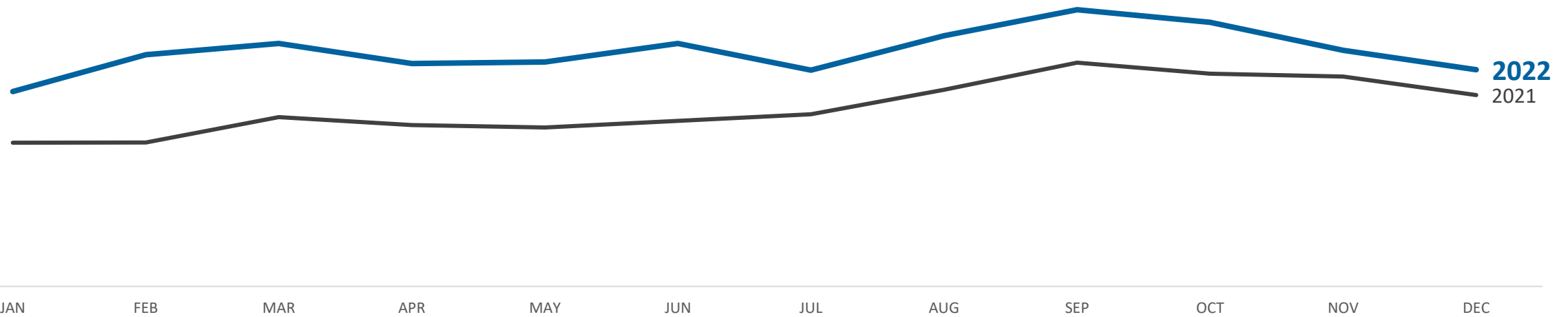


Ridership Report

UTA Systemwide Ridership Monthly Trend

Mode: All Modes

Service Type: WKD, SAT, SUN



Year	Total Ridership
2021	23,960,999
2022	31,439,582

% Growth
31.2%

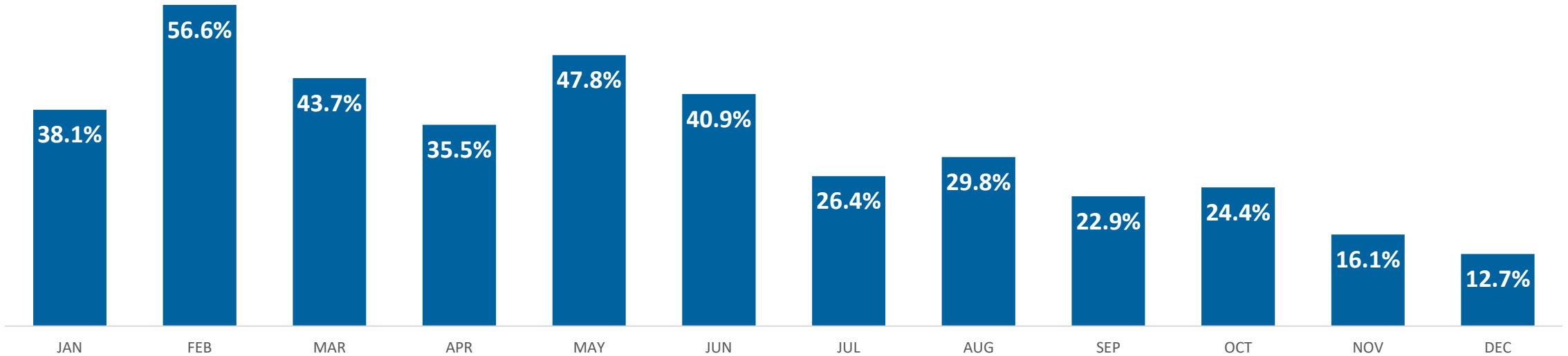


Ridership Report

Systemwide % Increase over Same Month in Previous Year

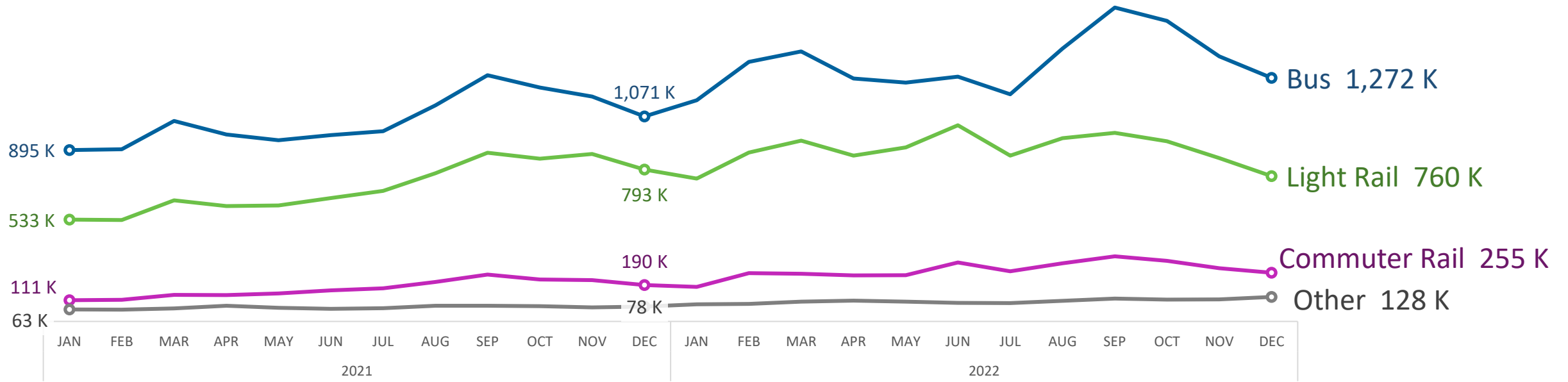
Mode: All Modes

Service Type: WKD, SAT, SUN



Ridership Report

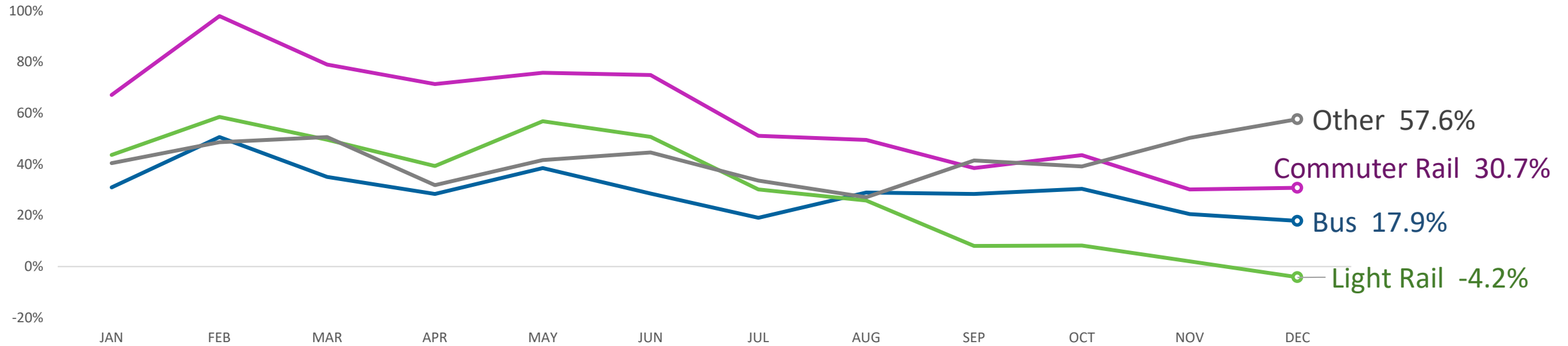
UTA Systemwide Ridership Monthly Trend by Mode
Service Type: WKD, SAT, SUN



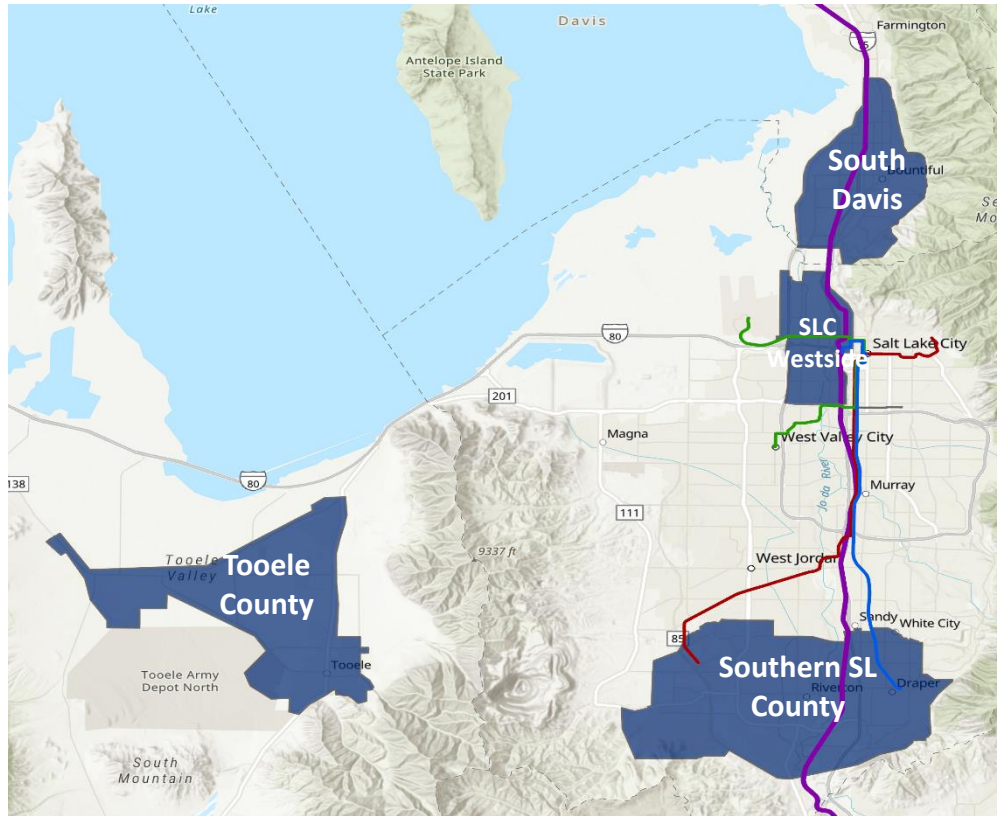
Ridership Report

% Increase of Same Month in Previous Year by Mode Group

Service Type: WKD, SAT, SUN



Ridership Report



2022 UTA On Demand

Total On Demand Ridership: 246,797

Southern SL County

Total Ridership: 165,410

Avg Monthly Growth: 9%

Annual Growth: 115%

SLC Westside

Total Ridership: 62,085

Avg Monthly Growth: 28%

South Davis

Total Ridership: 7,718

Avg Monthly Growth: 48%

Tooele County

Total Ridership: 11,584

Avg Monthly Growth: 29%



Questions?



NBA All-Stars Service Update



UTA Plan of Service

All-Star Week

February 12-21, 2023





Events

- 100,000+ anticipated visitors
- Week-long; 18 major events Feb 17-19
- Vivint, Salt Palace, Grand America, Huntsman Center

Partners

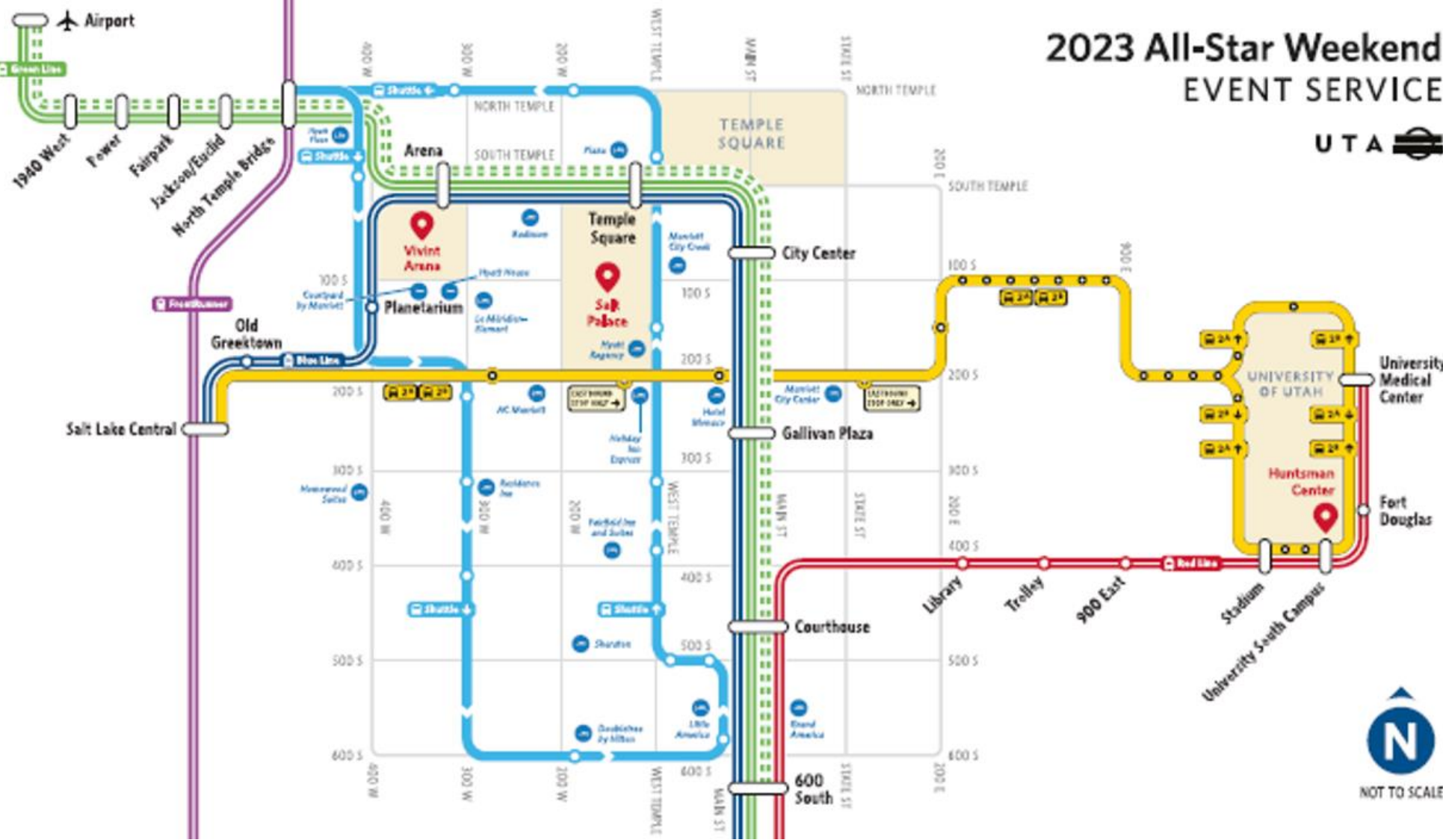
- NBA, Utah Jazz, Airport, UDOT, UofU, Salt Lake City, Salt Lake Chamber, Visit Salt Lake, TSA, State of Utah, and more

Zero Fare + Surge Plans

- Est. additional 3,000 hours extended service
- 24/7 airport service on TRAX Green Line
- Administrative transit ambassadors supporting Operations

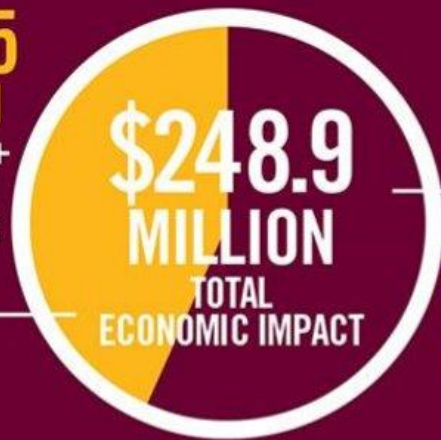


2023 All-Star Weekend EVENT SERVICE



NOT TO SCALE

\$107.5
MILLION
INDIRECT +
INDUCED
SPENDING



\$141.4
MILLION
DIRECT
SPENDING

TOTAL ECONOMIC IMPACT

The \$248.9 million in total economic impact includes \$141.4 million in direct spending, the injection of new revenue into the community from non-local attendees and corporations. The remaining impact accounts for indirect effect, additional spending occurring in the economy because of the initial injection of money and induced effect which estimates changes in household income attributed to hosting NBA All-Star 2022.

**All numbers contained in the Temple University report account for leakage, the amount of total direct spending not retained in the local economy.*

ATTENDEE INFORMATION



121,641
ATTENDEES

45
STATES



24
COUNTRIES



VISITOR SPENDING

\$362
PER DAY

Non-local attendee
average spending.

47,014
ROOM NIGHTS



\$413
ON LODGING
PER NIGHT

Non-local attendees
average spend
per night.



Audit Committee Report



**Next Meeting: Wednesday,
May 31, 2023 at 1:00 p.m.**



ADJOURN

