

# **Contract: Funding Agreement for the Historic Orchard Pathway Connection Project (Perry City)**

---



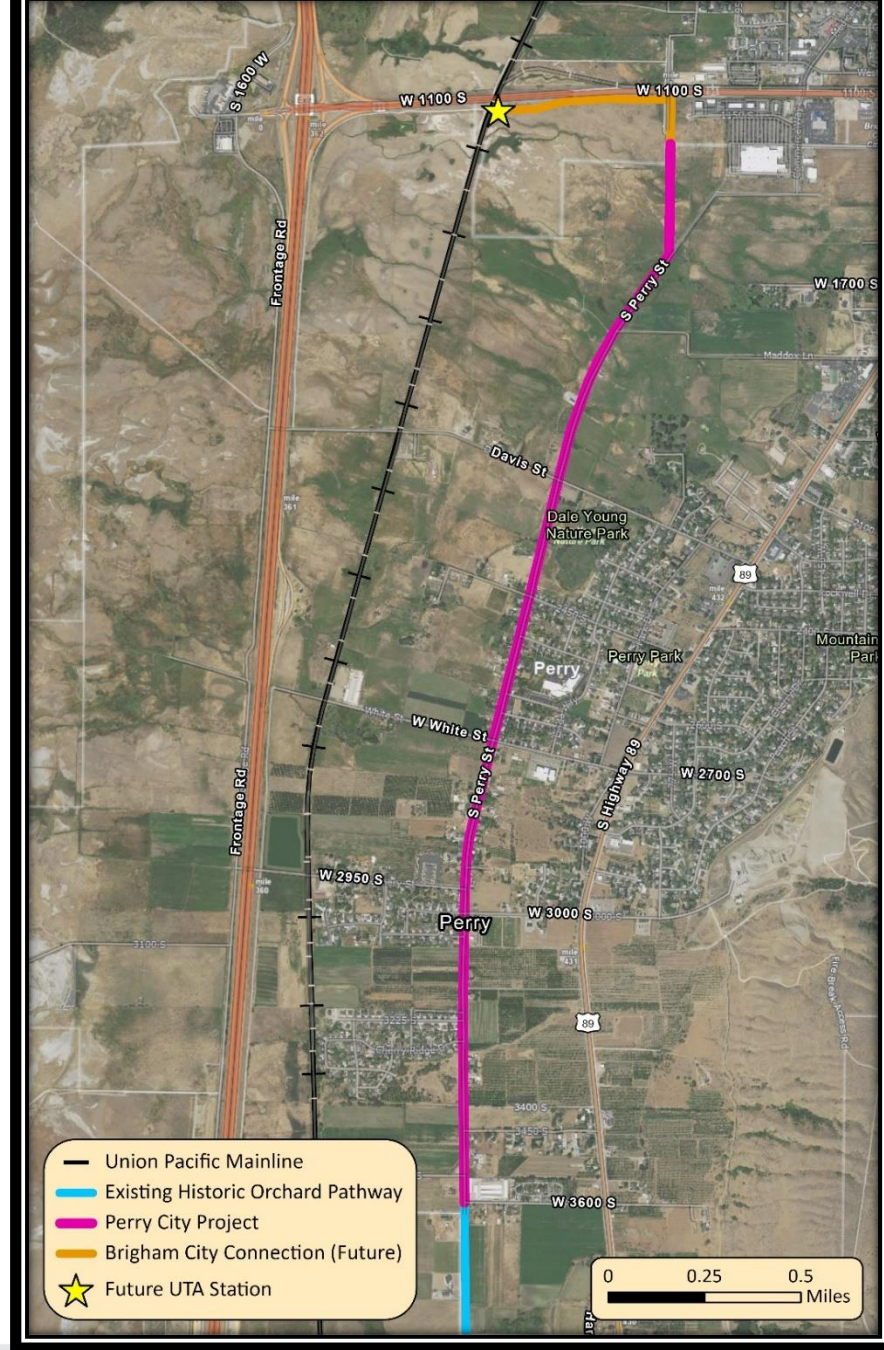
# Background

- Box Elder County residents passed 2nd quarter sales tax in 2007 to support the development of the extension of commuter rail
  - The Regional Transportation Plan identifies the need to preserve right of way for this future project
  - For the past five years, UTA has been working to advance corridor preservation efforts
- In 2020, the tax was expanded to also support active transportation projects as part of S.B. 150
- On September 20, 2022, the County Commissioners of Box Elder County unanimously approved Resolution 22-09 regarding Perry City's funding request to use 2nd quarter sales to partially pay for the design, construction and improvement of the Historic Orchard Pathway Connection



# Perry City Funding Agreement

- Perry City is requesting \$250,000 from the 2nd quarter sales tax to support the Historic Orchard Pathway Connection project
- The City will be responsible for the construction oversight and management of the project along with any professional or technical services that may be required



# **Contract: Funding Agreement for the Historic Orchard Pathway Connection Project (Perry City)**

---

## **Recommended Action (by acclamation)**

Motion to approve the funding agreement with Perry City for the Historic Orchard Pathway Connection Project, as presented

