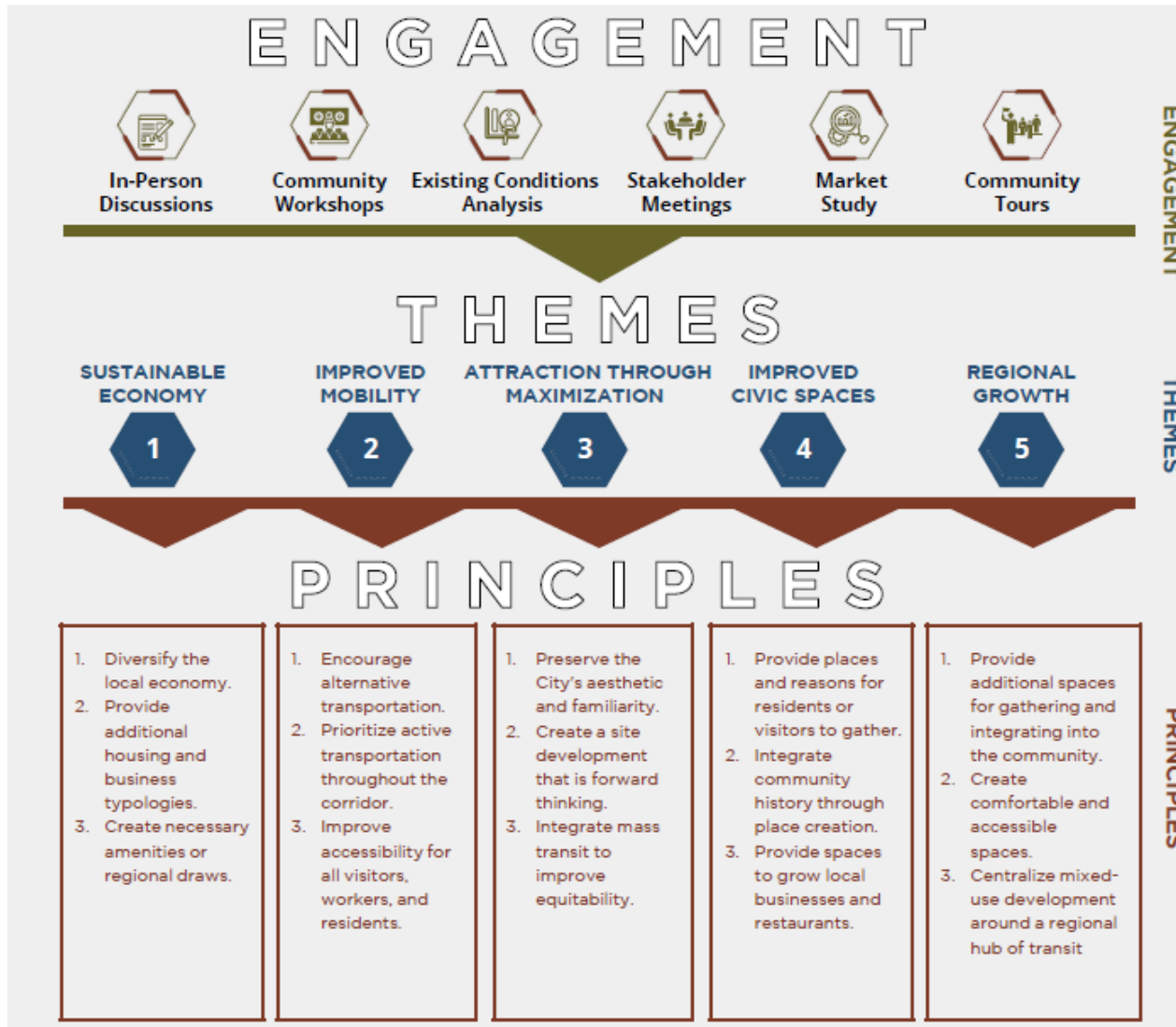


Roy Station Area Plan





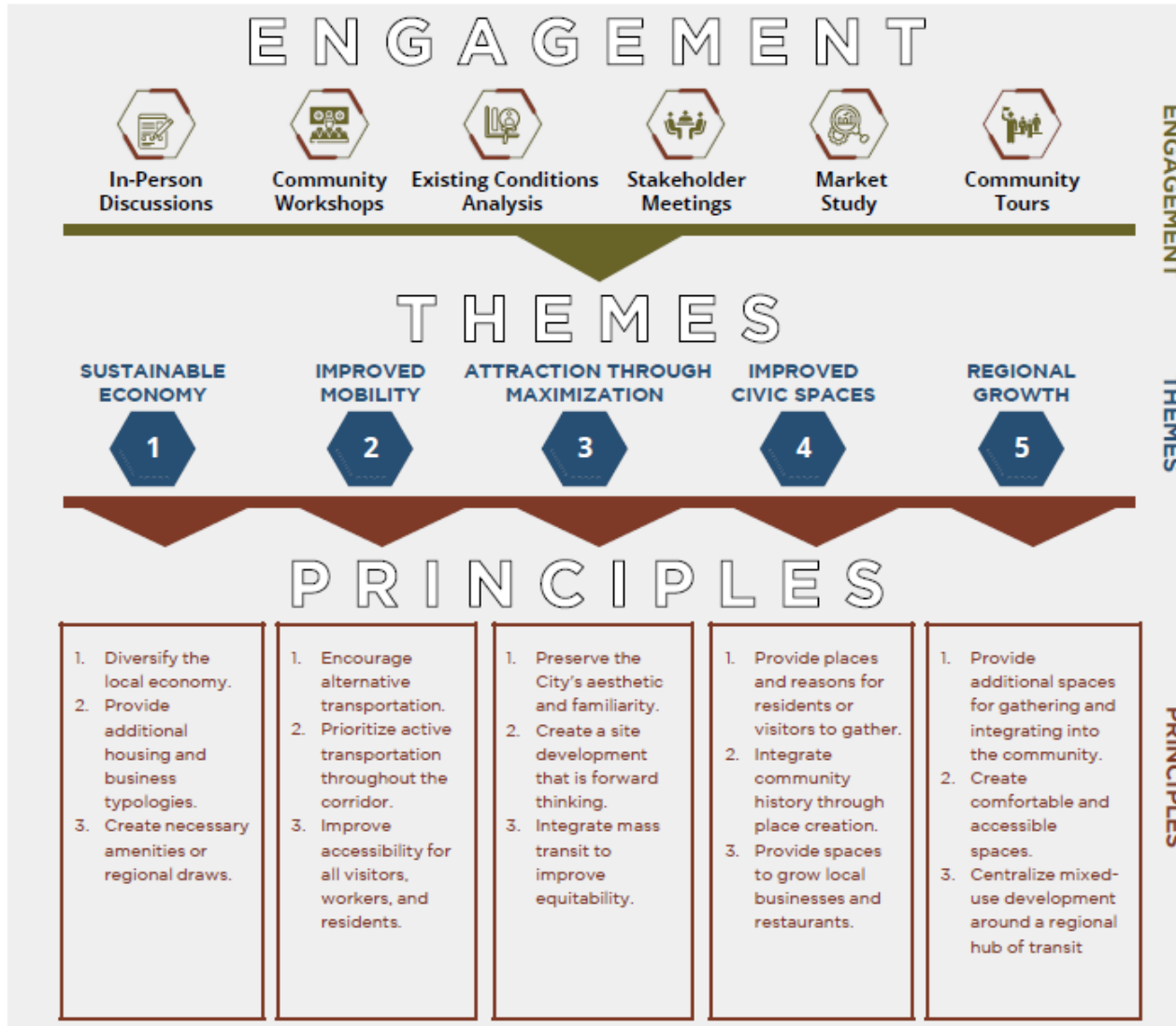
Key Themes

- Sustainable economy
- Improved mobility
- Attraction through maximization
- Improved Civic Spaces
- Regional Growth

Stakeholders

- City officials
- Adjacent Landowners
- Property Developers
- Utah Transit Authority
- Utah Department of Transportation
- Wasatch Front Regional Council
- Union Pacific Railroad Company





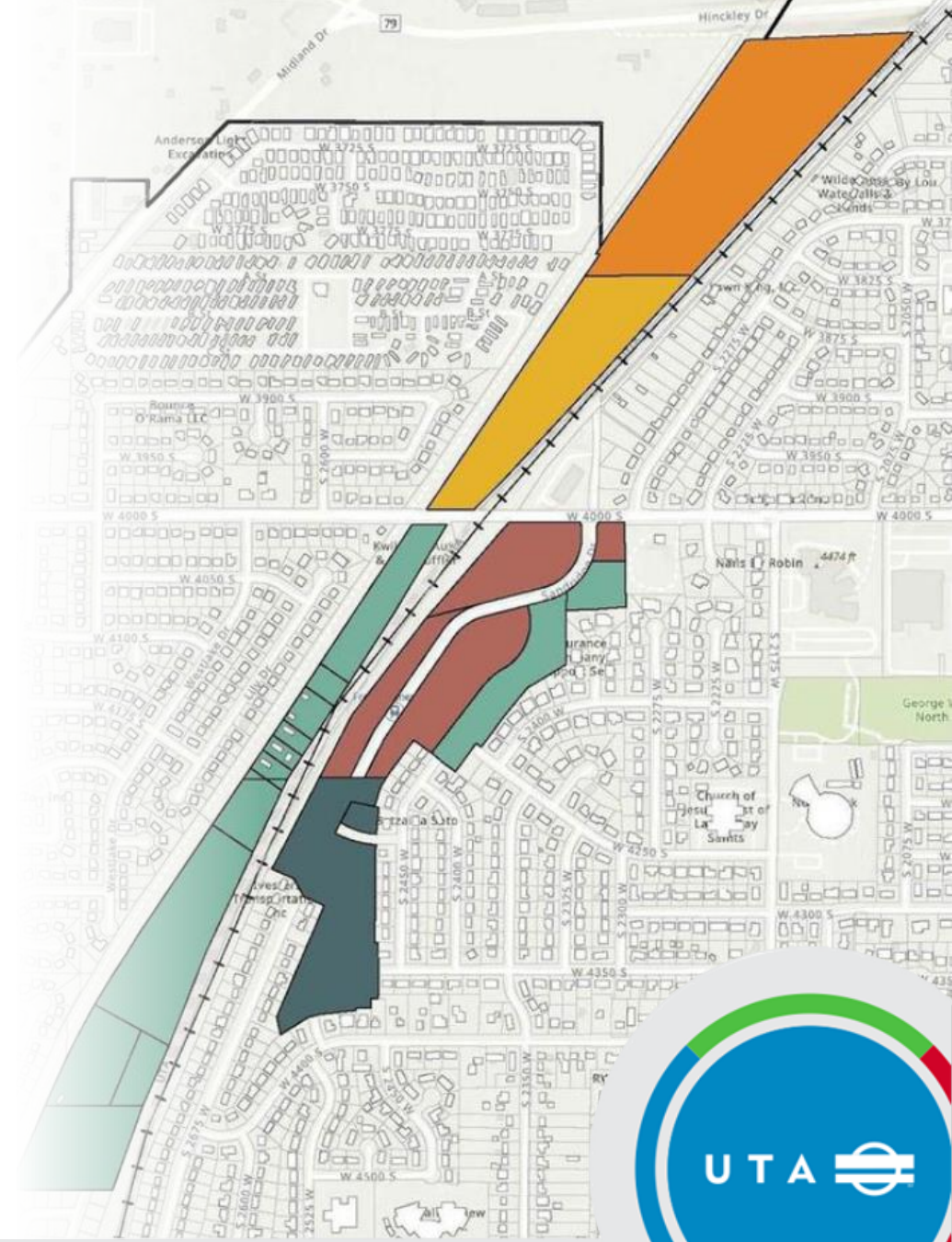
Highlighted Principles

- Diversify local economy
- Provide additional housing and business typologies
- Encourage alternative transportation
- Preserve City's aesthetic
- Integrate community history
- Grow local businesses and restaurants
- Centralize developments around regional transit hub



Plan Vision

- Thriving, mixed use and walkable district
- Regional destination
- Opportunities for employment, living, and recreation
- Increased number of jobs, retail space, and housing available in the station area



UTA Property

- Preserves station platform and bus loop.
- Recommends a variety of multi-family housing types and commercial space.
- Provides connections into existing neighborhoods.
- Park & Ride stalls to be integrated into the development
 - Parking analysis required to ensure sufficient supply.

