

Monthly Operating Financial Report December 2022 - Preliminary

February 22, 2023

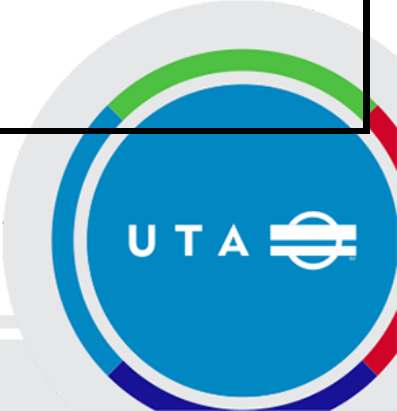


Utah Transit Authority

Board Dashboard: December 31, 2022 - Preliminary

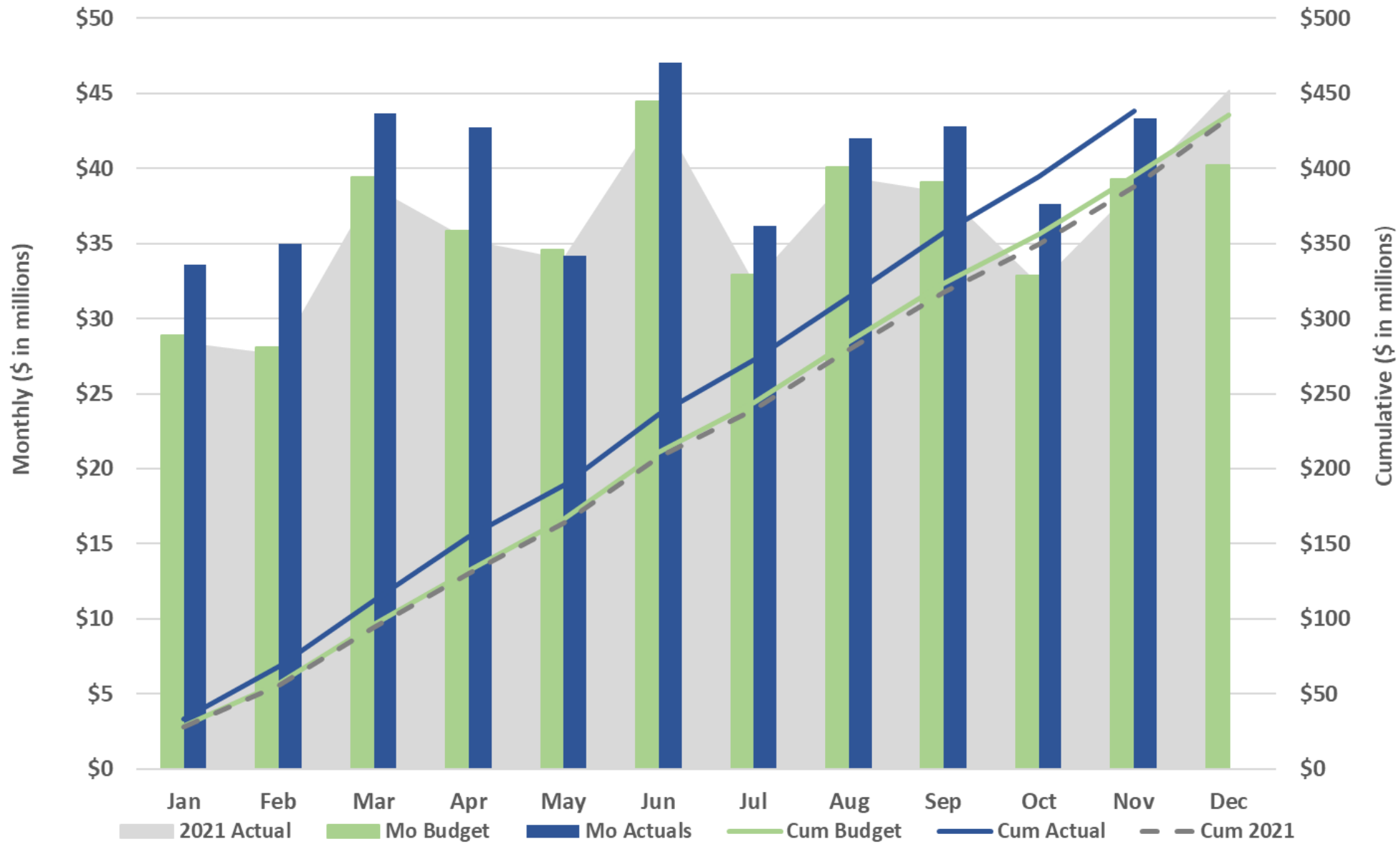
Financial Metrics	Dec Actual	Dec Budget	Fav/ (Unfav)	%	YTD Actual	YTD Budget	Fav/ (Unfav)	%
	Sales Tax (Nov '22 mm \$)	\$ 43.3	\$ 39.3	\$ 4.08	10.4%	\$ 438.1	\$ 395.4	\$ 42.71
Fare Revenue (mm)	\$ 2.9	\$ 3.0	\$ (0.12)	-3.9%	\$ 34.1	\$ 34.2	\$ (0.09)	-0.3%
Operating Exp (mm)	\$ 30.1	\$ 32.4	2.24	6.9%	\$ 346.3	\$ 363.2	\$ 16.84	4.6%
Subsidy Per Rider (SPR)	\$ 11.27	\$ 13.25	\$ 1.98	14.9%	\$ 9.93	\$ 13.25	\$ 3.32	25.1%
UTA Diesel Price (\$/gal)	\$ 3.13	\$ 2.75	\$ (0.38)	-13.6%	\$ 3.92	\$ 2.75	\$ (1.17)	-42.6%
Operating Metrics	Dec Actual	Dec-21	F/ (UF)	%	YTD Actual	YTD 2021	F/ (UF)	%
Ridership (mm)	2.41	2.13	0.3	13.2%	31.44	23.97	7.5	31.2%
Energy Cost by Type								
Diesel (Cost per Mile)					\$	0.78		
Unleaded Gas (Cost per Mile)					\$	0.49		
CNG (Cost per Mile)					\$	0.27		
Bus Propulsion Power (Cost per Mile)					\$	0.98		
TRAX Propulsion Power (Cost per Mile)					\$	0.79		

UTAH TRANSIT AUTHORITY



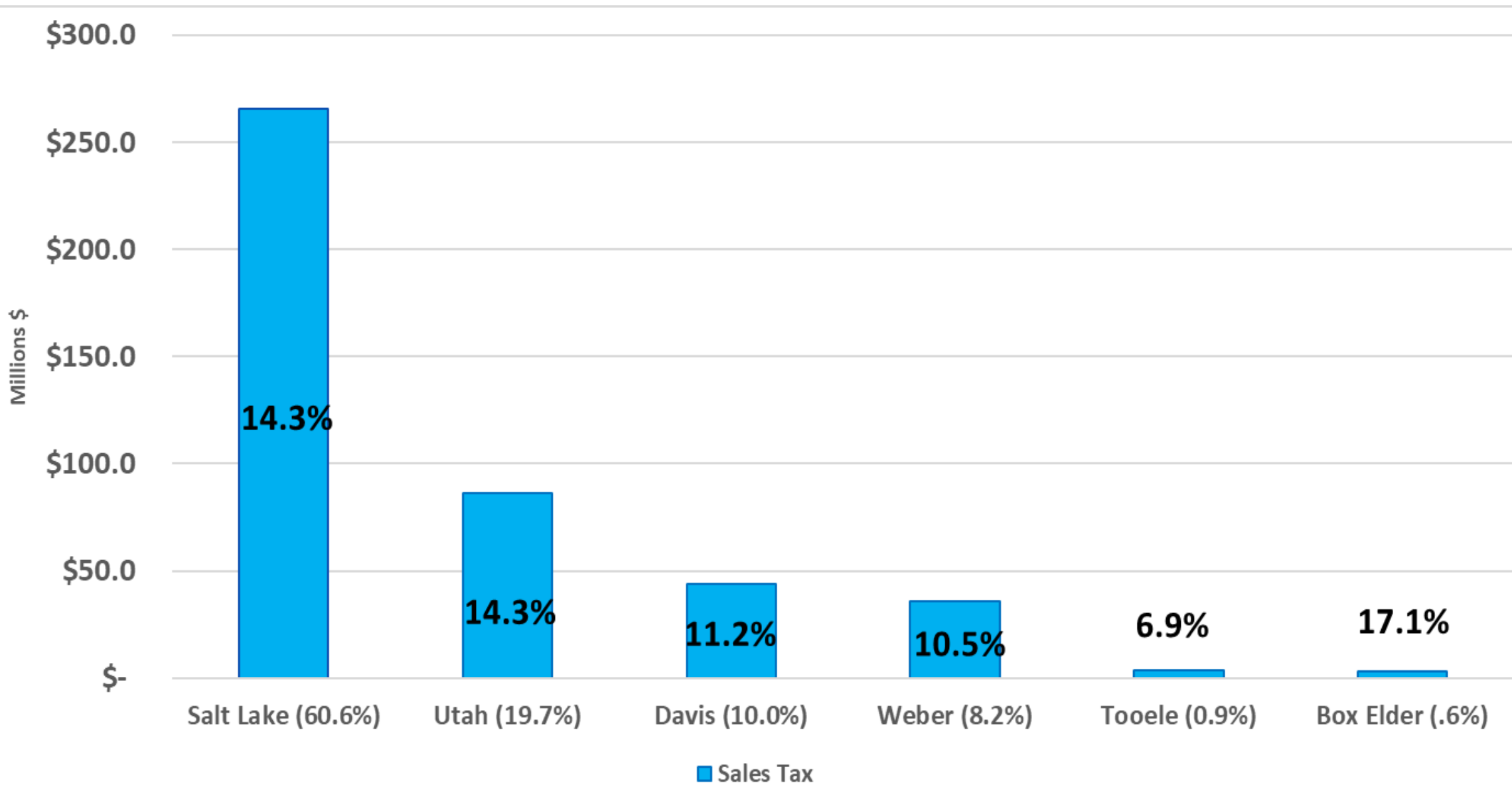
2022 Sales Tax

November (YTD Variance +\$42.7 million)

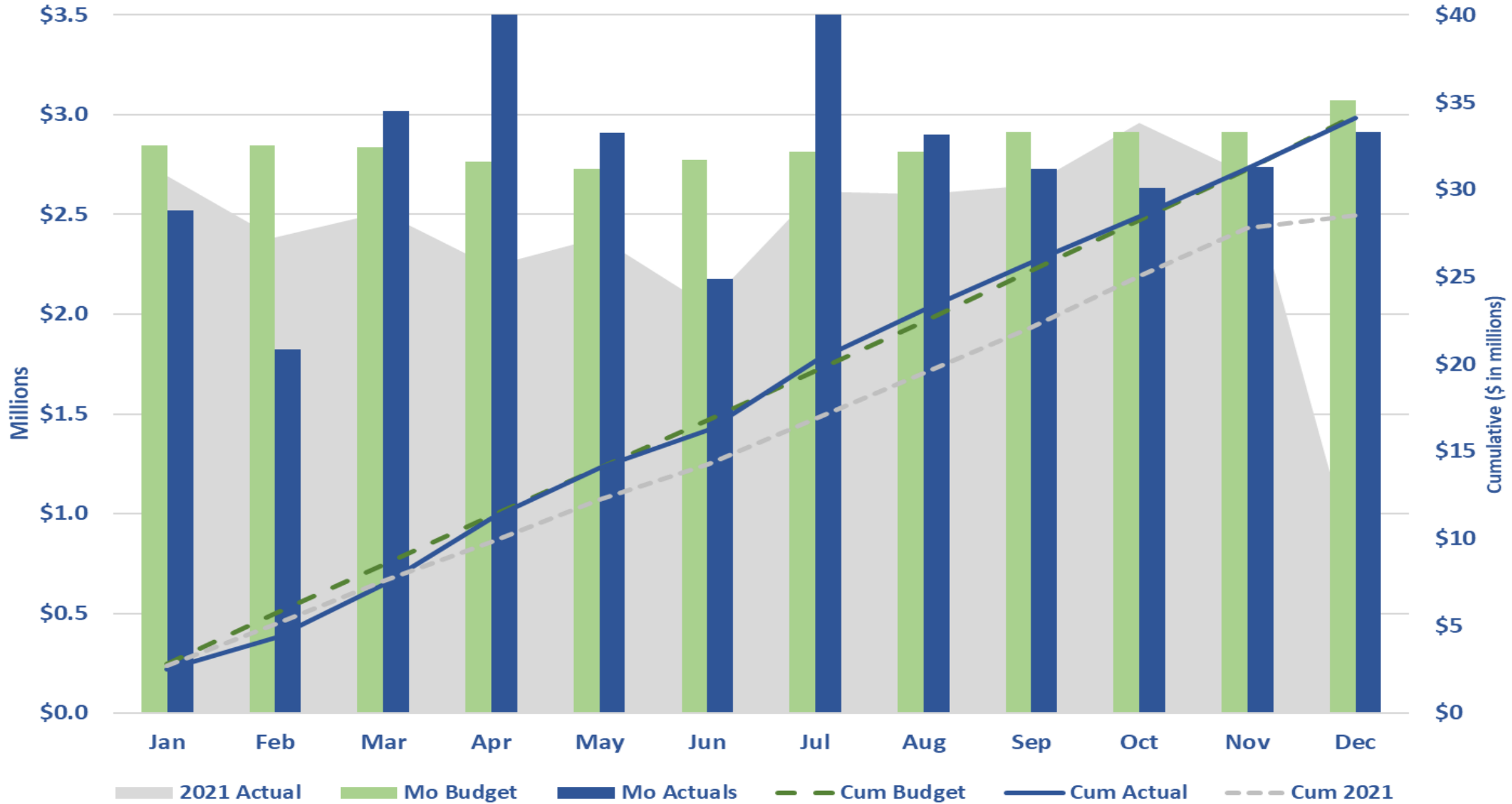


Sales Tax Collections

(Percentage Growth for 12 months ended November 30, 2022)



2022 Passenger Revenue December YTD (\$128K)



FTE Report: December 2022

Administrative FTEs	Dec-21	Dec 2022		Variance '22	
	Actual	Actual	Budget	Var	Percent
<i>Admin Depts</i>	492.8	528.0	567.3	39.3	6.9%
<i>Operating Depts</i>	355.5	357.5	384.5	27.0	7.0%
<i>Total FTE</i>	848.3	885.5	951.8	66.3	7.0%

Bargaining Unit FTEs	Dec-21	Dec 2022		Variance '22	
	Actual	Actual	Budget	Var	Percent
<i>Admin Depts</i>	55.0	58.5	48.0	(10.5)	-21.9%
<i>Operating Modes</i>					
<i>Bus</i>	942.5	939.0	1,066.0	127.0	11.9%
<i>Light Rail</i>	260.0	262.0	272.0	10.0	3.7%
<i>Commuter Rail</i>	92.0	101.0	103.0	2.0	1.9%
<i>Riverside</i>	142.0	149.0	157.0	8.0	5.1%
<i>Asset Mgt</i>	166.0	160.0	185.0	25.0	13.5%
<i>Total FTE</i>	1,657.5	1,669.5	1,831.0	161.5	14.3%



December 2022 – Preliminary

Preliminary

MONTHLY RESULTS					FISCAL YEAR 2022 Dollars in Millions	YEAR-TO-DATE RESULTS				
Prior Year	Current Year					Prior Year	Current Year			
Actual	Actual	Budget	Variance			Actual	Actual	Budget	Variance	
					Revenue					
\$ 56.4	\$ 45.1	\$ 40.3	\$ 4.8	11.9%	Sales Tax (Dec accrual)	\$ 433.4	474.3	\$ 435.7	\$ 38.6	8.9%
0.7	2.9	3.0	(0.1)	-3.9%	Fares	28.5	34.1	34.2	(0.1)	-0.3%
(101.7)	-	-	-	0.0%	Federal	130.6	217.4	159.6	57.8	36.2%
18.7	4.2	1.9	2.3	120.7%	Other *	30.1	26.4	21.7	4.7	21.8%
\$ (25.9)	\$ 52.2	\$ 45.2	\$ 7.0	15.4%	TOTAL REVENUE	\$ 622.6	\$ 752.2	\$ 651.2	\$ 101.0	15.5%
					Expense					
\$ 14.7	\$ 14.1	\$ 14.5	\$ 0.3	2.4%	Salary/Wages	\$ 157.9	\$ 167.9	\$ 172.3	\$ 4.4	2.6%
7.0	6.8	7.1	0.3	4.4%	Fringe Benefits	77.1	81.6	84.8	3.2	3.8%
2.6	5.6	3.2	(2.4)	-73.2%	Services	24.9	34.3	35.3	1.1	3.0%
0.9	1.5	1.9	0.5	23.6%	Parts	17.6	17.4	22.9	5.5	23.9%
0.6	2.4	2.0	(0.4)	-19.7%	Fuel	20.9	32.8	27.5	(5.3)	-19.5%
0.5	0.5	0.6	0.1	21.7%	Utilities	5.7	5.4	6.4	1.0	16.1%
31.7	1.6	3.8	2.2	58.6%	Other	42.3	14.9	24.7	9.8	39.9%
(0.4)	(2.4)	(0.8)	(1.5)	184.2%	Capitalized Cost	(7.5)	(7.9)	(10.7)	(2.8)	26.4%
\$ 57.6	\$ 30.1	\$ 32.4	\$ 2.2	6.9%	TOTAL EXPENSE	\$ 338.9	\$ 346.3	\$ 363.2	\$ 16.8	4.6%
\$ 17.2	\$ 6.3	\$ 8.3	\$ 1.9	23.4%	Debt Service	\$ 102.3	\$ 81.9	\$ 89.9	\$ 8.0	8.9%
\$ (100.7)	\$ 15.7	\$ 4.6	\$ 11.1	243.0%	Contrib. Capital/Reserves	\$ 180.1	\$ 324.0	\$ 198.1	\$ 125.9	63.5%

Favorable/(Unfavorable)

Favorable/(Unfavorable)

**Does not include Sale of Assets*

**Does not include Sale of Assets*

Questions?

