



CCO #001

Project: MSP287 - 900 East UVX Station

Contract Change Order #001: CO-001 900 East UVX Station

CONTRACT COMPANY:	HORROCKS ENGINEERS, INC.	CONTRACT FOR:	233750-OG:Commitment to HORROCKS ENGINEERS, INC.
DATE CREATED:	2/01/2024	CREATED BY:	Steven Bailess (HNTB Corporation)
CONTRACT STATUS:	Approved	REVISION:	0
REQUEST RECEIVED FROM:	Kristi Shinall	LOCATION:	
DESIGNATED REVIEWER:	Travis Colledge (Utah Transit Authority)	REVIEWED BY:	
DUE DATE:		REVIEW DATE:	02/01/2024
INVOICED DATE:		PAID DATE:	
REFERENCE:		CHANGE REASON:	Configuration Change
PAID IN FULL:	No	EXECUTED:	No
ACCOUNTING METHOD:	Amount Based	SCHEDULE IMPACT:	
FIELD CHANGE:	No	SIGNED CHANGE ORDER RECEIVED DATE:	
		TOTAL AMOUNT:	\$102,055.00

DESCRIPTION:

CO-001 900 East UVX Station

This contract modification addresses changes to the original project scope dated August 30, 2023. UTA has requested that the design include a snow melt system at each platform. Additionally, coordination with stakeholders has resulted in the need for development of multiple conceptual layouts at each platform location, screening of these alternatives, and development of a new concept layout one block south of the previously planned location. These scope changes will affect the project design schedule and fee.

ATTACHMENTS:

[UVX 900 East Mod1 Pricing Form_Horrocks_20240108_Rev 1.pdf](#), [UVX 900 East Mod1 Scope of Work_Horrocks_20240108_Rev 1.docx](#)

DIRECTION OR AUTHORIZATION TO PROCEED (DAP) PREVIOUSLY EXECUTED::

IT IS MUTUALLY AGREED UPON, THERE IS A SCHEDULE IMPACT DUE TO THIS CHANGE ORDER::

TIME COMPLETION CHANGE (DAYS/DATE):

CHANGE ORDER CHECKLIST

1. IS THERE A CLEAR DESCRIPTION OF THE PERTINENT FACTS FOR THIS CHANGE?: Yes

2. WAS AN INDEPENDENT ESTIMATE RECEIVED BEFORE THE CONTRACTOR ESTIMATE AND IS THERE A CLEAR RECORD OF NEGOTIA: Yes

3. IS THERE REFERENCE TO THE APPLICABLE CONTRACT SECTION ALLOWING THE CHANGE?: Yes

4. IS THERE ADEQUATE JUSTIFICATION FOR THE CHANGE; I.E., ADDED SCOPE, CHANGED: Yes



CCO #001

CONDITIONS,
BETTERMENT ETC.:

5. WAS AGREEMENT REACHED PRIOR TO STARTING ANY WORK ON THIS CHANGE?:	Yes	6. ARE THERE THIRD PARTY FUNDING PARTICIPANTS AND HAVE THEIR APPROVAL(S) BEEN RECEIVED IN WRITING?:	N/A
7. ARE UTILITY AND ROW AGREEMENTS IN PLACE?:	N/A	8. WAS THE CONTRACTOR INFORMED OF SUBSURFACE CONDITIONS?:	N/A
9. IF THE CHANGE MODIFIES A CONTRACTUAL MILESTONE, IS A SCHEDULE ANALYSIS INCLUDED?:	No	10. DID TIME ALLOW GOING OUT TO BID FROM ANOTHER CONTRACTOR?:	N/A
11. IS THE CHANGE DESIGN COMPLETE?:	N/A	12. HAS A LEGAL REVIEW BEEN PERFORMED?:	Yes
13. WERE PROJECT CONTINGENCY REQUIREMENTS OBSERVED?:	Yes	14. ARE ALL ASPECTS OF THIS CHANGE INCLUDING TIME AND PRICE AGREED UPON WITHOUT RESERVATION BY THE PARTIES IN:	Yes
15. WERE QUOTES FROM OTHER POTENTIAL CONTRACTORS RECEIVED? IF YES, ATTACH.:		16. IS THIS CHANGE CONSISTENT WITH THE ENVIRONMENTAL DOCUMENT AND /OR ENVIRONMENTAL PERMITS?:	Yes
17. ARE LABOR, MATERIAL, AND EQUIPMENT PRICES SUFFICIENTLY DETAILED AND ARE MARKUPS PER THE CONTRACT PROVISIO:	Yes	18. IS THE CHANGE ALLOWABLE AND APPLICABLE AND QUALIFY FOR FEDERAL PARTICIPATION?:	N/A
CHECKLIST NOTES, IF APPLICABLE:			

CHANGE ORDER APPROVAL

CHANGE ORDER LEGAL STATEMENT: The amount of any adjustment to time for Substantial Completion and/or Guaranteed Completion or Contract Price includes all known and stated impacts or amounts, direct, indirect and consequential, (as of the date of this Change Order) which may be incurred as a result of the event or matter giving rise to this Change Order. Should conditions arise subsequent to this Change Order that impact the Work under the Contract, including this Change Order, and justify a Change Order under the Contract, or should subsequent Change Orders impact the Work under this Change Order, UTA or the Contractor may initiate a Change Order per the General Provisions, to address such impacts as may arise.

REQUIRED SIGNATURES: **Project Manager** \$0 - 24,999
Legal Review \$25k or greater
Dir. of Capital Projects \$25k - 74,999



CCO #001

Chief Service Dev. Ofcr. \$75k - 199,999
 Executive Director \$200,000+
 Procurement/Contracts (for all)

DocuSigned by:
Sig Mike Bell
 By: 70E33A415BA44F6...
 Date: 2/1/2024

DocuSigned by:
Sig Vicki Woodward
 By: 730838A1B5E7493...
 Date: 2/1/2024

DocuSigned by:
Sig Travis Colledge (ger):
 By: 7D8BB84952DB4C4...
 Name: Travis Colledge
 Title: Project Manager III
 Date: 2/1/2024

DocuSigned by:
Sig [Signature]
 By: 91ABD751A0BD4BE...
 Name: [Name]
 Title: Dir. Capital Design & Construction
 Date: 2/8/2024

DocuSigned by:
Sig David Hancock (velopment Officer):
 By: 6CCB9A134C4E42A...
 Name: David Hancock, Chief Service Development Officer
 Date: 2/8/2024

Signature (Executive Director):

By: Jay Fox, Executive Director
 Date: _____

CHANGE ORDER LINE ITEMS:

#	Budget Code	Description	Amount
1	40-3287.68000.8001	Project Development 900 East UVX Station Contract Modification 1	\$102,055.00
Grand Total:			\$102,055.00

The original (Contract Sum)	\$ 488,618.00
Net change by previously authorized Change Orders	\$ 0.00
The contract sum prior to this Change Order was	\$ 488,618.00
The contract sum will be increased by this Change Order in the amount of	\$ 102,055.00
The new contract sum including this Change Order will be	\$ 590,673.00
The contract time will not be changed by this Change Order.	



CCO #001

HORROCKS ENGINEERS, INC.

DocuSigned by:

E97FA8B7158C4E1...
SIGNATURE

2/8/2024

DATE

SIGNATURE

DATE

900 East UVX Station A/E 23-03750VW Mod 1**Labor Summary**

Task	Hours	Subtotal
1. Project Management	108	22,950
2. Data Collection	92	13,093
3. 30% Design Submittal	110	17,485
4. 60% Design Submittal	157	27,269
5. Final Design Submittal Package	72	12,575
Total Labor	539	\$ 93,373
Total Direct Expenses		\$ 8,682
Total	539	\$ 102,055

Firm		HORROCKS ENGINEERS		23-03750VW 900 East UVX Station A/E Mod 1																								
Employee		Jodi Pearson	Ryan Kilchen	Mike Seely	Jeff Hansen	Heather Hamilton	Wayland Sorenson	Brett Brady	Mitch Mortimer	Kayla Hoover	Josh Fern	Jackson Boss	Victor Peterson	Jerry Slaugh	Tracy Olson	Brandon Carrick	Phil Moehle	Kim Hill		Heidi Preston	Dave Randall							
Title/Role	Project Manager	Lead Designer	BYU Liaison	Civil Design Lead	Site Design Lead	UBI/SUE Drainage Lead	Structures Lead	Civil/Site Design Support	Structures Design Support	SUE Manager	SUE Field Technician	SUE Field Technician	SUE CADD	SUE Support	SUE GIS Support	SUE Survey Support	CAD support	BYU Intern	Project Accountant	Project Schedule Support								
176.93%	Anticipated 2024 Base Rate	97.84	72.88	77.29	75.53	45.87	63.63	96.82	48.81	45.56	63.19	32.05	30.50	49.83	27.83	47.40	87.74	51.47	18.00	37.37	92.81							
11%	Fee	29.86	22.20	23.52	23.13	13.97	19.38	29.49	12.43	14.18	19.25	9.76	9.41	14.88	6.48	14.44	17.59	15.68	6.48	11.38	25.22							
Composite Rate		\$300.74	\$224.02	\$237.31	\$233.40	\$140.99	\$195.59	\$297.61	\$125.45	\$143.11	\$194.24	\$98.52	\$94.98	\$150.11	\$85.54	\$145.71	\$177.49	\$158.22	\$55.33	\$114.86	\$254.54							
Tasks and Subtasks																									Hours	Budget		
Task 1 - PROJECT MANAGEMENT																									72	\$ 15,919		
	Project Management Activities (3 additional months)	12	9		3	6	3	0	0	0	0	0	0	0	0	0	0	0	0	6	6	3	0			30	\$ 7,078	
	Project Team Meetings (bi-weekly for 3 more months) (virtual)	12	8	6	6	3	6	3												6	6	3	0			42	\$ 8,842	
Task 2 - DATA COLLECTION																									92	\$ 13,093		
	Data Collection (existing topo, ROW, design files from UVX)				2	4	0	0	0	2	20	20	24	2	2	4	0	0	0	0	0	0	0				0	\$ -
	Site Visit for New Station Location	4	4																							8	\$ 2,099	
	Utility Investigation/Mapping		2				4				2	20	20	24	2	2	4										80	\$ 10,254
	Supplemental Survey Coordination		2			2																					4	\$ 730
Task 3 - 30% DESIGN SUBMITTAL																									107	\$ 16,847		
	Conceptual Layouts & Screening	6	8		2	30	4		20										2	12							84	\$ 12,555
	Internal Team Design Meetings (3 additional meetings)	3	5	2	1	3	3		3																		23	\$ 4,292
Task 4 - 60% DESIGN SUBMITTAL																									82	\$ 15,193		
	Prepare 60% Drawings (2 sites) (snow melt integration and coord.)	2	4		2	16	4	10	2	26	0	0	0	0	0	0	0	0	0	4	0	0	0				50	\$ 9,005
	Internal Team Design Meetings (4 additional meetings)	4	6	2	2	4	4	2	2	2																	32	\$ 6,188
Task 5 - FINAL DESIGN SUBMITTAL PACKAGE																									30	\$ 5,533		
	Prepare 100% Drawings (2 sites) (snow melt integration and coord.)	2	4	0	0	8	0	4	0	12	0	0	0	0	0	0	0	0	0	0	0	0	0				30	\$ 5,533
						8		4		12																	0	\$ -
LABOR SUBTOTALS		45	50	10	8	65	18	14	25	38	2	20	20	24	2	2	4	2	25	6	3	0				383	\$ 66,586	
Total Direct Labor		#####	#####	\$ 2,373.10	\$ 1,867.18	\$ 9,164.10	\$ 3,520.65	\$ 4,166.55	\$ 3,136.25	\$ 5,438.00	\$ 388.47	\$ 1,970.49	\$ 1,899.58	\$ 3,602.74	\$ 171.07	\$ 291.43	\$ 709.95	\$ 316.45	\$ 1,383.25	\$ 689.13	\$ 763.61	\$ -						
Total Labor Budget		\$ 13,533	\$ 11,201	\$ 2,373	\$ 1,867	\$ 9,164	\$ 3,521	\$ 4,167	\$ 3,136	\$ 5,438	\$ 388	\$ 1,970	\$ 1,900	\$ 3,603	\$ 171	\$ 291	\$ 710	\$ 316	\$ 1,383	\$ 689	\$ 764	\$ -	\$ -	\$ -	\$ -	\$ -	\$ 66,586	
Direct Expenses																										\$ 8,682		
	Message (site visits and utility investigation)																									\$ 432		
	Topographic Survey and Existing ROW research/mapping - REDCON																									\$ 8,250		
Total Cost		\$ 13,533	\$ 11,201	\$ 2,373	\$ 1,867	\$ 9,164	\$ 3,521	\$ 4,167	\$ 3,136	\$ 5,438	\$ 388	\$ 1,970	\$ 1,900	\$ 3,603	\$ 171	\$ 291	\$ 710	\$ 316	\$ 1,383	\$ 689	\$ 764	\$ -	\$ 8,682	\$ -	\$ -	\$ 75,268		

Prepared By: Jodi Pearson
Date: 8-Jan-24

Jodi Pearson

Firm	PIVOT Architecture		23-03750VW 900 East UVX Station A/E Mod 1							
	Employee	Kari Turner	Scott Clarke	Architect 1	Designer 2					
	Title/Role	Project Manager	Associate	Architect 1	Designer 2			Direct Expense(s)	Totals	
	2024 Base Rate	72.82	51.73	33.60	28.00					
130.63%	OH	95.120	67.570	43.890	36.580	0.000				
11%	Fee	18.47	13.12	8.52	7.10	0.00				
	Composite Rate	\$186.41	\$132.42	\$86.01	\$71.68	\$0.00				
Tasks and Subtasks									Hours	Budget
Task 1 - PROJECT MANAGEMENT		14	10	0	0	0	0		24	\$ 3,934
	Project Management Activities (3 additional months)	6	2						8	\$ 1,383
	Project Team Meetings (bi-weekly for 3 more months) (virtual)	8	8						16	\$ 2,551
Task 2 - DATA COLLECTION		0	0	0	0	0	0		0	\$ -
Task 3 - 30% DESIGN SUBMITTAL		0	0	0	0	0	0		0	\$ -
		0	0		0				0	\$ -
Task 4 - 60% DESIGN SUBMITTAL		2	12	0	8	0	0		22	\$ 2,535
	Prepare 60% Drawings (2 sites) (snow melt integration and coord.)	2	12		8				22	\$ 2,535
Task 5 - FINAL DESIGN SUBMITTAL PACKAGE		2	8	0	4	0	0		14	\$ 1,719
	Prepare 100% Drawings (2 sites) (snow melt integration and coord.)	2	8		4				14	\$ 1,719
									0	\$ -
									0	\$ -
LABOR SUBTOTALS		18	30	0	12	0	0		60	\$ 8,188
Total Direct Labor		\$ 3,355.38	\$ 3,972.60	\$ -	\$ 860.16	\$ -	\$ -			
Total Labor Budget		\$ 3,355	\$ 3,973	\$ -	\$ 860	\$ -	\$ -	\$ -	\$ -	\$ 8,188
Direct Expenses		-	-	-	-	-	-	\$ -		
Total Cost		\$ 3,355	\$ 3,973	\$ -	\$ 860	\$ -	\$ -		\$ -	\$ 8,188

Check Hrs 24
 Check Cost \$ 3,934
 Check Hrs 0
 Check Hrs 0
 Check Hrs 22
 Check Cost \$ 2,535
 Check Hrs 14
 Check Cost \$ 1,719

Firm		SPECTRUM ENGINEERS		23-03750VW 900 East UVX Station A/E Mod 1						
Employee										
Title/Role		Project Manager	Principal Engineer	EIT	BIM Consultant	BIM Modeler	Clerical	Direct Expense(s)	Totals	
	2024 Base Rate	94.57	81.33	41.61	43.50	34.05	24.59			
164.37%	OH	155.440	133.680	68.390	71.500	55.970	40.420			
11%	Fee	27.50	23.65	12.10	12.65	9.90	7.15			
	Composite Rate	\$277.51	\$238.66	\$122.10	\$127.65	\$99.92	\$72.16			
Tasks and Subtasks									Hours	Budget
Task 1 - PROJECT MANAGEMENT		6	6	0	0	0	0		12	\$ 3,097
	Project Management Activities (3 additional months)	6	6						12	\$ 3,097
	Project Team Meetings (bi-weekly for 3 more months) (virtual)								0	\$ -
Task 2 - DATA COLLECTION		0	0	0	0	0	0		0	\$ -
Task 3 - 30% DESIGN SUBMITTAL		1	1	1	0	0	0		3	\$ 638
	Prepare Outline of Specifications/Special Provisions	1	1	1					3	\$ 638
		12	13	14	4	6	4		53	\$ 9,541
	Prepare 60% Drawings (2 sites)	8	10	9	4	6	4		41	\$ 7,104
	Prepare Cost Estimate	2	2	3					7	\$ 1,399
	Prepare Draft Project Specifications/Special Provisions	1	1	2					4	\$ 760
	Attend and Document 60% Review Meeting (in person)	1							1	\$ 278
Task 5 - FINAL DESIGN SUBMITTAL PACKAGE		8	7	6	2	3	2		28	\$ 5,323
	Prepare 100% Drawings	4	5	5	2	3	2		21	\$ 3,613
	Update Cost Estimate	1	1						2	\$ 516
	Prepare Final Project Specifications/Special Provisions	1	1	1					3	\$ 638
	Attend and Document 100% Review Meeting (in-person)	1							1	\$ 278
	Update 100% Documents for Final Submittal/Advertising								0	\$ -
	Provide Advertising Support	1							1	\$ 278
									0	\$ -
									0	\$ -
									0	\$ -
	LABOR SUBTOTALS	27	27	21	6	9	6		96	\$ 18,599
	Total Direct Labor	\$ 7,492.77	\$ 6,443.82	\$ 2,564.10	\$ 765.90	\$ 899.28	\$ 432.96			
	Total Labor Budget	\$ 7,493	\$ 6,444	\$ 2,564	\$ 766	\$ 899	\$ 433	\$ -	\$ -	\$ 18,599
Direct Expenses									\$ -	
	Total Cost	\$ 7,493	\$ 6,444	\$ 2,564	\$ 766	\$ 899	\$ 433	\$ -	\$ -	\$ 18,599

Check Hrs 12
 Check Cost \$ 3,097
 Check Hrs 0
 Check Hrs 3
 Check Hrs 53
 Check Cost \$ 9,541
 Check Hrs 28
 Check Cost \$ 5,323
 Check Hrs 96

Scope of Work

900 East UVX Station Contract Modification 1

Prepared by:

Horrocks

08 JAN 2024



SCOPE OF WORK

SUMMARY

This contract modification addresses changes to the original project scope dated August 30, 2023. UTA has requested that the design include a snow melt system at each platform. Additionally, coordination with stakeholders has resulted in the need for development of multiple conceptual layouts at each platform location, screening of these alternatives, and development of a new concept layout one block south of the previously planned location. These scope changes will affect the project schedule and fee. The following scope of work describes these scope changes in more detail.

PROJECT TASKS

TASK 1 Project Management

Horrocks will continue to provide overall direction and control for the work tasks. We estimate that the project design will be extended by approximately 3 months to accommodate the additional work. This scope includes providing the same tasks outlined in the original scope of work for 3 additional months. It also includes coordinating this contract modification and providing the associated documentation.

Additional Deliverables:

- Project schedule updates (3 additional months)
- Monthly progress reports with invoices (3 additional months)
- Meeting agendas and summaries (3 additional months)
- Subconsultant coordination (3 additional months)

TASK 2 Data Collection

Horrocks will gather additional data and information necessary to complete the final design for the new southbound platform location. The expanded data collection area is outlined in red in the map on the next page. The additional data collection will impact the project schedule. Data gathering for the expanded area will include:

- Site visit by the Project Manager and Lead Designer
- Aerial imagery
- Topographic survey using GPS to establish additional survey control and conventional field surveying techniques to locate all physical features lying within the expanded area. Visible utilities will be identified along with any Blue Stake demarcations present at the time of survey. (REDCON)
- Field survey of physical evidence pertinent to the right-of-way of the subject properties around the expanded area. Analysis of public record information including plans, maps, deeds, notes and other relevant documents versus physical evidence. Survey work does not include an ALTA or Record of Survey, ortho photogrammetry, or setting property corners. (REDCON)
- Utility Company Record Maps
- Utility locating to provide Subsurface Utility Engineering (SUE) Quality Level (QL) B and C data

Additional Deliverable:

- Updated topographic and utility survey base files

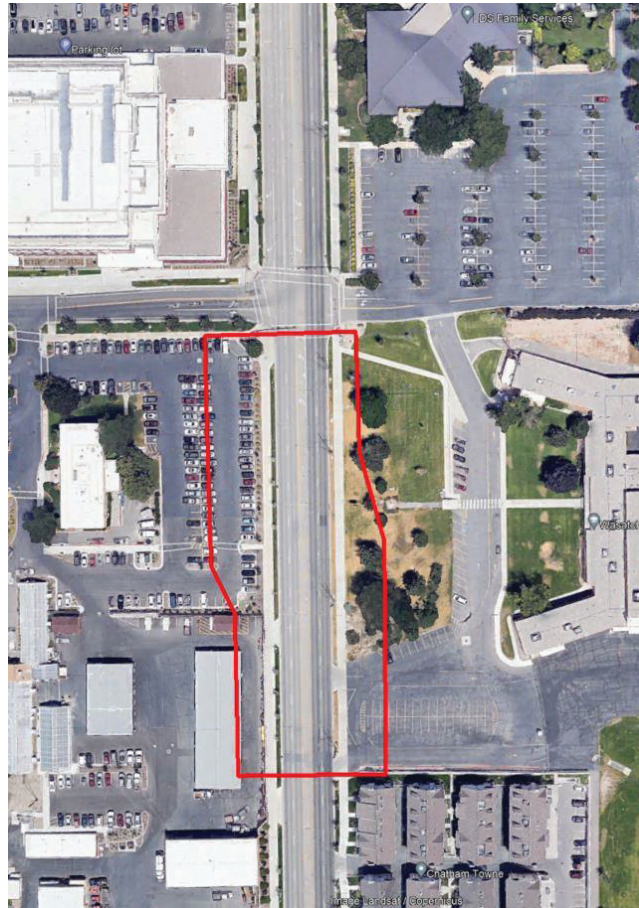


Figure 1: Expanded Area

TASK 3 30% Design Submittal

The additional work items include providing multiple conceptual layouts and exhibit drawings and assisting with screening the alternatives. It also includes attending additional internal design team meetings for the extended duration of the 30% design phase. We assume the project design will be extended by approximately 3 months to accommodate the additional work. The production of the 30% design plans will only be completed once. Even though the platform sites have moved, the production work for the 30% design plans is included with the original scope.

Additional Deliverables:

- Platform Conceptual Layout Exhibits (8 concepts prepared for NB platform and 4 prepared for SB platform)
- Document outlining the pros and cons of each platform’s conceptual layouts

TASK 4 60% Design Submittal

The contract modification includes adding an electric snow melt system design for each of the platforms. We will complete a 60% level design as part of this task to complement the other discipline designs included in the original scope of work. This work includes completing the coordination, design, plan and detail production, specifications, and estimating necessary to incorporate a snow melt system into the 60% design submittal. We assume that this work will not impact the project schedule (though the 60% design phase will be extended while we wait for additional data collection effort described in Task 2). Additional internal design team meetings for the 60% design phase are included. We also assume that it will not complicate work already defined in the original scope except to coordinate site electrical connections into the utility designs, and incorporate snow melt into the platform structural design and any associated above-ground electrical boxes/cabinets into the station layout and architecture design.

Additional Deliverables:

- 60% Snow Melt System Design Drawings in PDF format (electronic)
- Snow Melt System Draft Construction Specifications/Special Provisions
- Addition of the Snow Melt System to the Capital Cost Estimate

TASK 5 100% Final Design Submittal Package

We will refine and finalize the snow melt system design to the 100% level to complement the other discipline designs. Revisions will be made to address the comments received during the 60% design review and updates/refinements will be made to progress all plan sheets and details to a state necessary for construction of the project. This work includes completing the coordination, design, plan production, specifications, and estimating necessary to incorporate a snow melt system into the 100% design submittal. We assume that this work will not impact the project schedule (except for starting the 100% design phase later due to additional data collection effort described in Task 2). We also assume that it will not complicate work already defined in the original scope except to coordinate site electrical connections into the utility designs, and incorporate snow melt into the platform structural design and any associated above-ground electrical boxes/cabinets into the station architecture design and station layout.

Additional Deliverables:

- 100% Snow Melt System Design Drawings in PDF format (electronic)
- Stamped and Signed “Released for Construction” Snow Melt System Design Drawings
- Snow Melt System Final Construction Specifications/Special Provisions
- Addition of the Snow Melt System to the Capital Cost Estimate