

# Executive Director's Report



# Financial Report – May 2022



# Operating

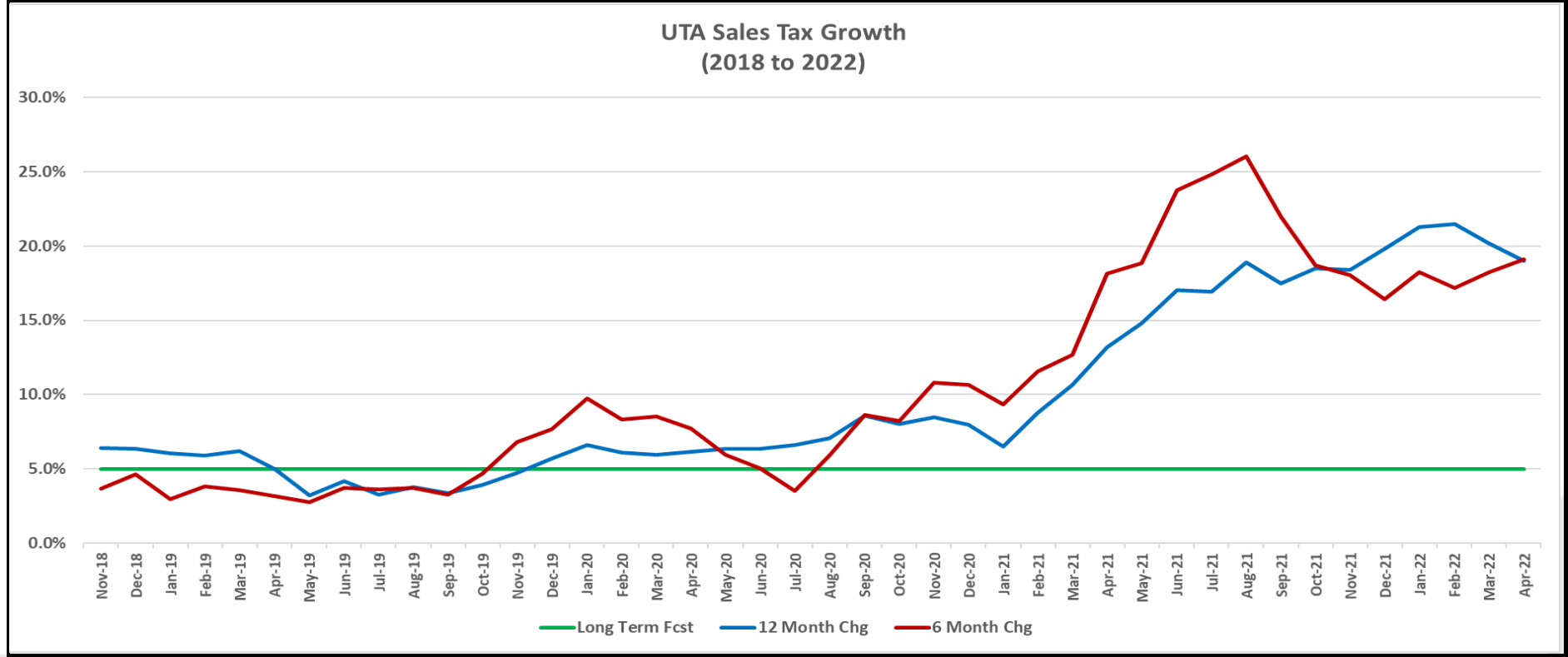


# UTA Board Dashboard

## May 2022

UTAH TRANSIT AUTHORITY

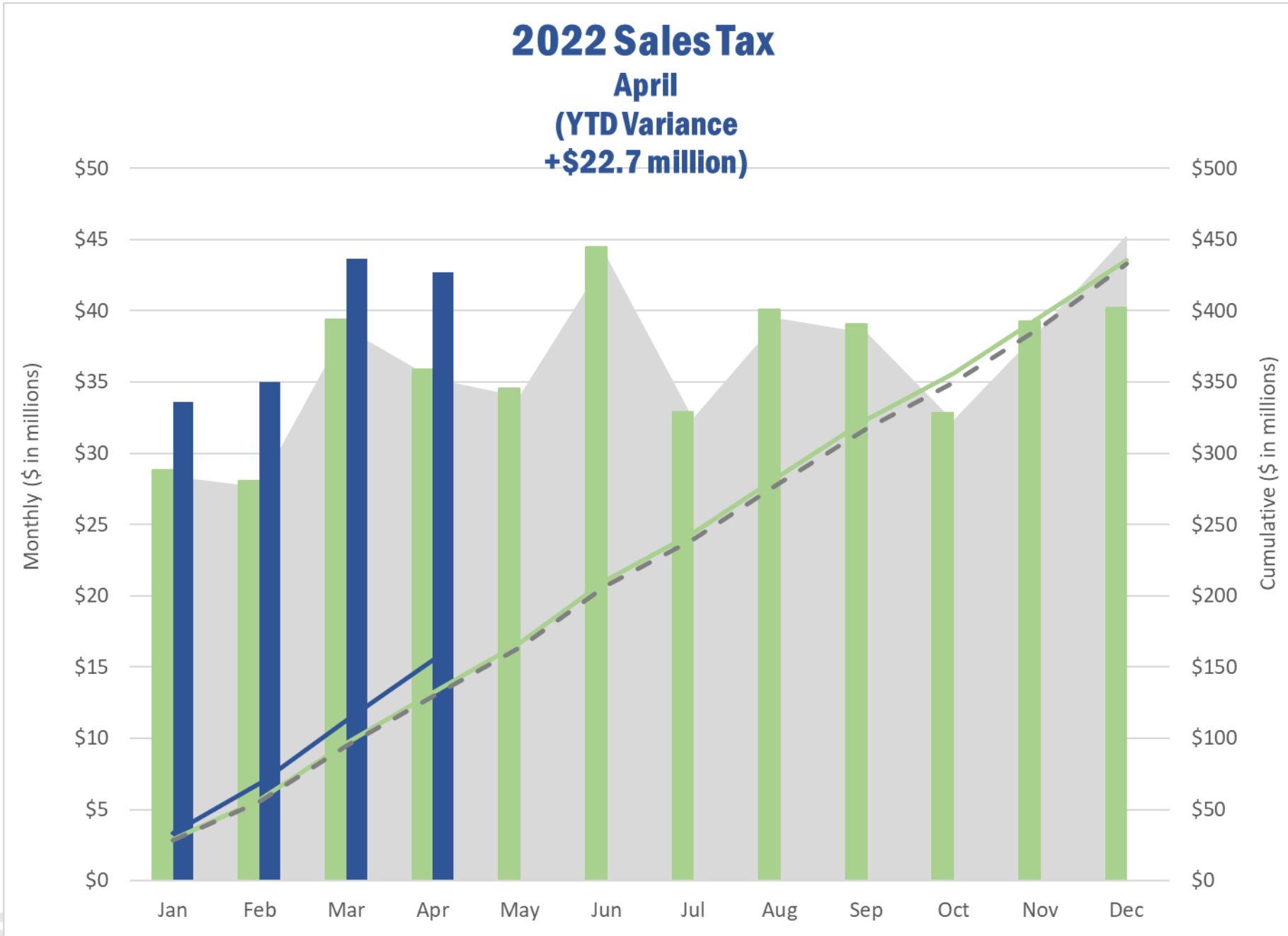
Financial Metrics	Fav/ (Unfav)				Fav/ (Unfav)			
	May Actual	May Budget		%	YTD Actual	YTD Budget		%
Sales Tax (Apr '22 mm \$)	\$ 42.7	\$ 35.9	\$ 6.85	19.1%	\$ 154.9	\$ 132.2	\$ 22.71	17.2%
Fare Revenue (mm)	\$ 2.9	\$ 2.7	\$ 0.18	6.6%	\$ 14.0	\$ 14.0	\$ 0.02	0.1%
Operating Exp (mm)	\$ 27.4	\$ 29.1	1.67	5.7%	\$ 134.8	\$ 147.0	\$ 12.22	8.3%
Subsidy Per Rider (SPR)	\$ 9.80	\$ 13.25	\$ 3.45	26.0%	\$ 9.70	\$ 13.25	\$ 3.55	26.8%
UTA Diesel Price (\$/gal)	\$ 4.58	\$ 2.75	\$ (1.83)	-66.6%	\$ 3.71	\$ 2.75	\$ (0.96)	-34.8%
Operating Metrics	May Actual	May-21	F/ (UF)	%	YTD Actual	YTD 2021	F/ (UF)	%
Ridership (mm)	2.50	1.77	0.7	41.3%	12.45	8.67	3.8	43.7%
Alternative Fuels	CNG Price (Diesel Gal Equiv)		\$ 1.82					



# Sales Tax

- 2021 Actual
- Mo Budget
- Mo Actuals
- Cum Budget
- Cum Actual
- Cum 2021

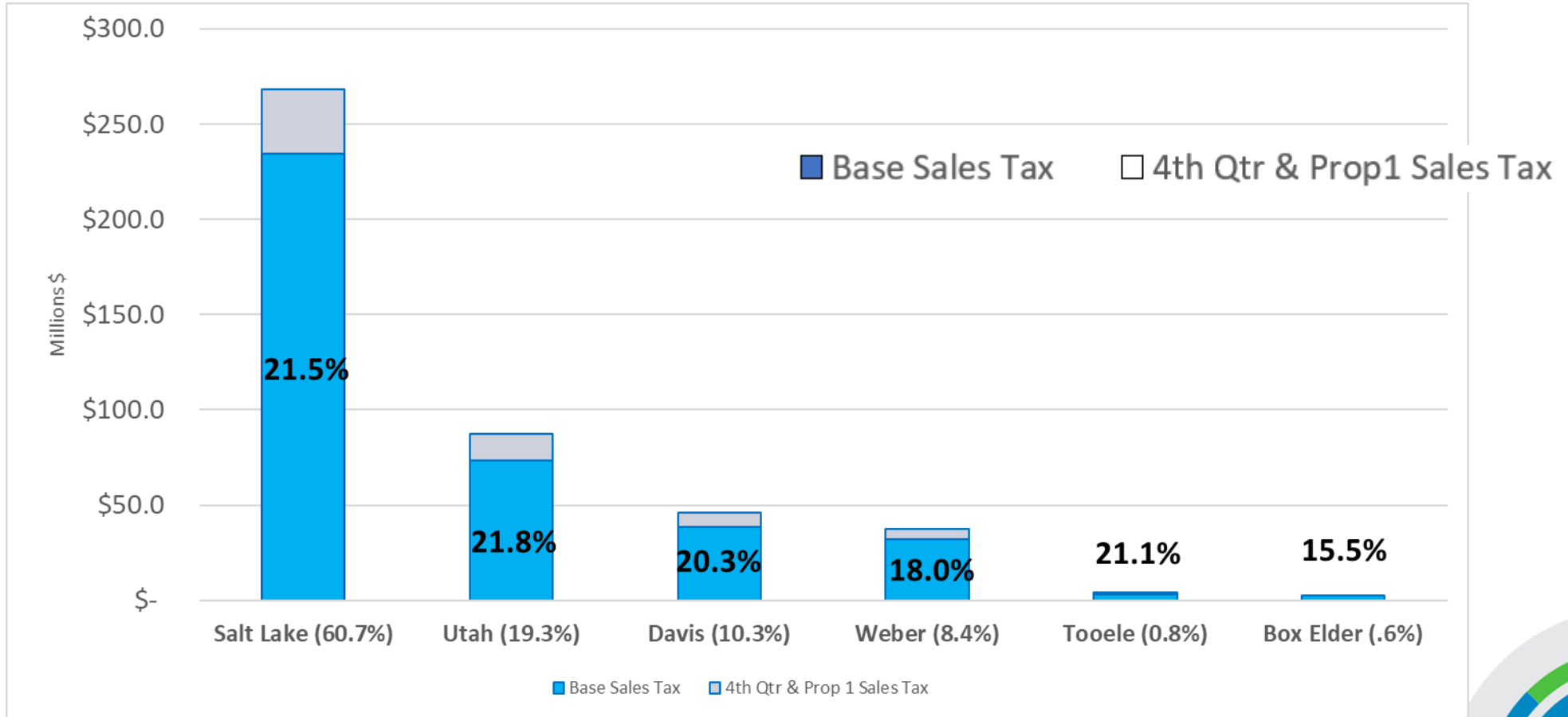
## 2022 Sales Tax April (YTD Variance +\$22.7 million)



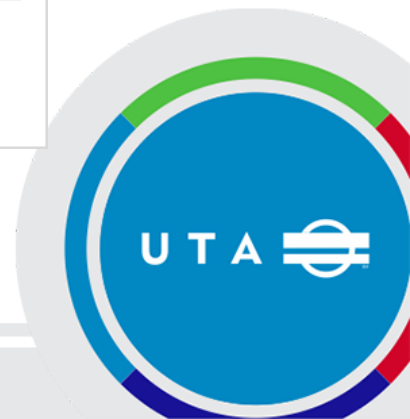
UTAH TRANSIT AUTH



## Sales Tax Collections (Percentage Growth for 12 months ended April 30, 2022)



- % growth in base sales tax revenues over prior year
- (includes impact of Prop1 and 4<sup>th</sup> quarter rate changes in 2019).

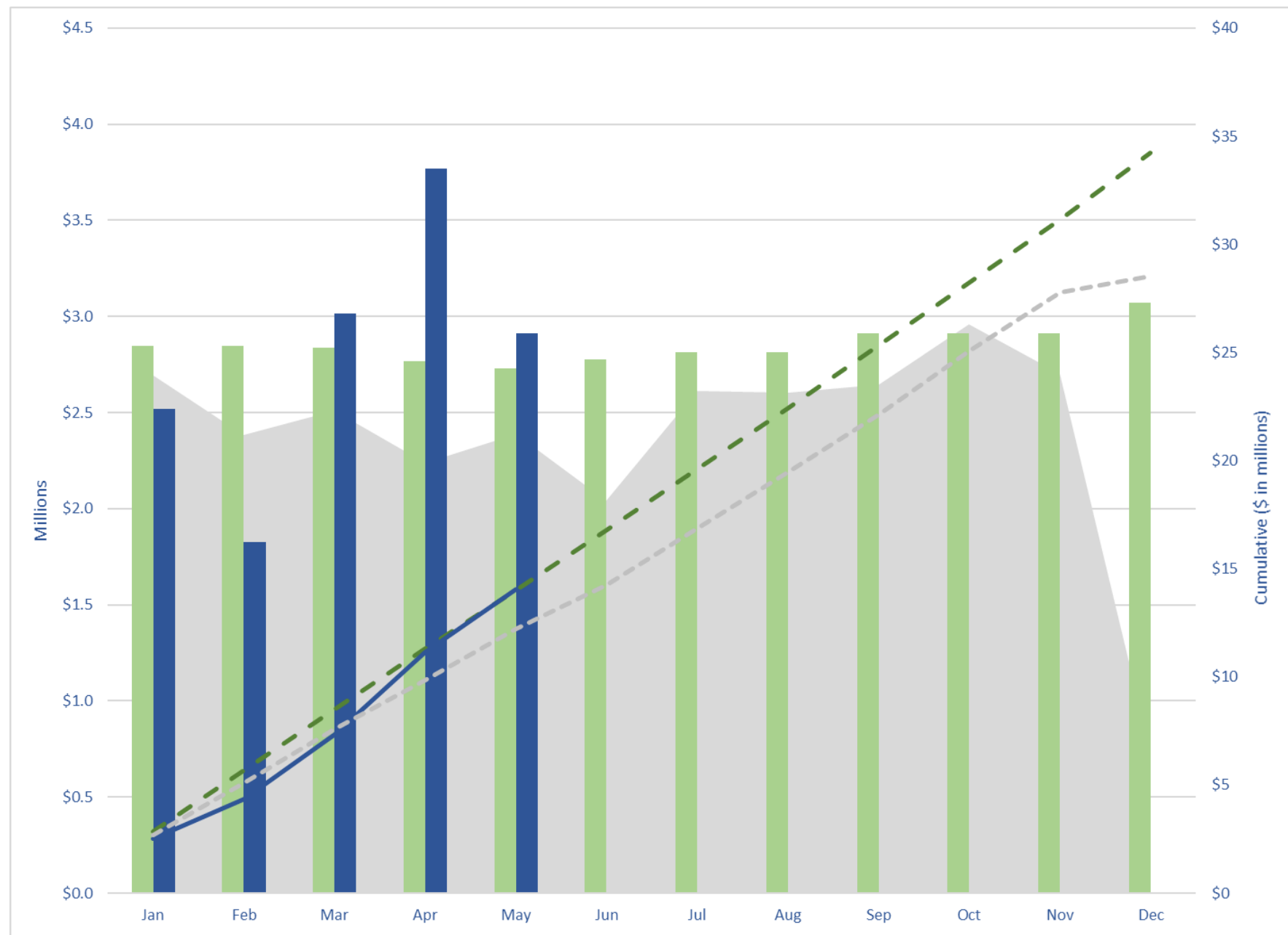


# 2022 Passenger Revenues

**May Variance = \$0.182 million**

UTAH TRANSIT AUTHORITY

- 2021 Actual
- Mo Budget
- Mo Actuals
- Cum Budget
- Cum Actual
- Cum 2021



# May 2022

MONTHLY RESULTS					FISCAL YEAR 2022 Dollars in Millions	YEAR-TO-DATE RESULTS				
Prior Year	Current Year					Prior Year	Current Year			
Actual	Actual	Budget	Variance			Actual	Actual	Budget	Variance	
					<b>Revenue</b>					
\$ 38.1	\$ 38.8	\$ 34.6	\$ 4.2	12.2%	Sales Tax <i>(Apr accrual)</i>	\$ 150.6	182.7	\$ 166.8	\$ 15.9	9.5%
2.4	2.9	2.7	0.2	6.6%	Fares	12.2	14.0	14.0	0.0	0.1%
77.8	35.7	19.7	16.1	81.8%	Federal	135.6	161.1	102.4	58.7	57.4%
1.2	1.4	1.7	(0.3)	-19.3%	Other *	3.9	6.5	6.9	(0.4)	-5.9%
<b>\$ 119.4</b>	<b>\$ 78.8</b>	<b>\$ 58.7</b>	<b>\$ 20.2</b>	<b>34.4%</b>	<b>TOTAL REVENUE</b>	<b>\$ 302.4</b>	<b>\$ 364.3</b>	<b>\$ 290.1</b>	<b>\$ 74.2</b>	<b>25.6%</b>
					<b>Expense</b>					
\$ 11.6	\$ 13.7	\$ 14.3	\$ 0.6	4.3%	Salary/Wages	\$ 63.4	\$ 69.1	\$ 71.3	\$ 2.2	3.1%
6.2	6.6	7.0	0.4	5.4%	Fringe Benefits	31.0	33.5	35.3	1.8	5.1%
1.7	3.2	2.4	(0.7)	-29.7%	Services	9.1	10.9	13.4	2.5	19.0%
2.0	1.4	1.9	0.5	28.8%	Parts	8.2	7.1	9.5	2.4	25.4%
1.4	2.2	2.3	0.1	2.8%	Fuel	8.4	10.2	11.3	1.0	9.2%
0.2	0.1	0.5	0.3	74.3%	Utilities	2.6	2.5	2.6	0.1	2.7%
0.6	0.9	1.6	0.7	43.0%	Other	3.7	4.5	8.1	3.6	44.3%
(0.7)	(0.6)	(0.9)	0.2	-27.5%	Capitalized Cost	(3.7)	(3.0)	(4.5)	1.5	-32.9%
<b>\$ 23.0</b>	<b>\$ 27.4</b>	<b>\$ 29.1</b>	<b>\$ 1.7</b>	<b>5.7%</b>	<b>TOTAL EXPENSE</b>	<b>\$ 122.7</b>	<b>\$ 134.8</b>	<b>\$ 147.0</b>	<b>\$ 12.2</b>	<b>8.3%</b>
\$ 7.6	\$ 6.8	\$ 6.8	\$ 0.1	0.9%	Debt Service	\$ 38.3	\$ 34.1	\$ 34.2	\$ 0.0	0.1%
<b>\$ 88.7</b>	<b>\$ 44.6</b>	<b>\$ 22.7</b>	<b>\$ 21.9</b>	<b>96.2%</b>	<b>Contrib. Capital/Reserves</b>	<b>\$ 141.4</b>	<b>\$ 195.4</b>	<b>\$ 108.9</b>	<b>\$ 86.5</b>	<b>79.4%</b>

Favorable/(Unfavorable)

\* Does not include loss on Sale of Assets: 2021 \$7.5M & 2022 \$3.5M.

Favorable/(Unfavorable)

**Questions?**

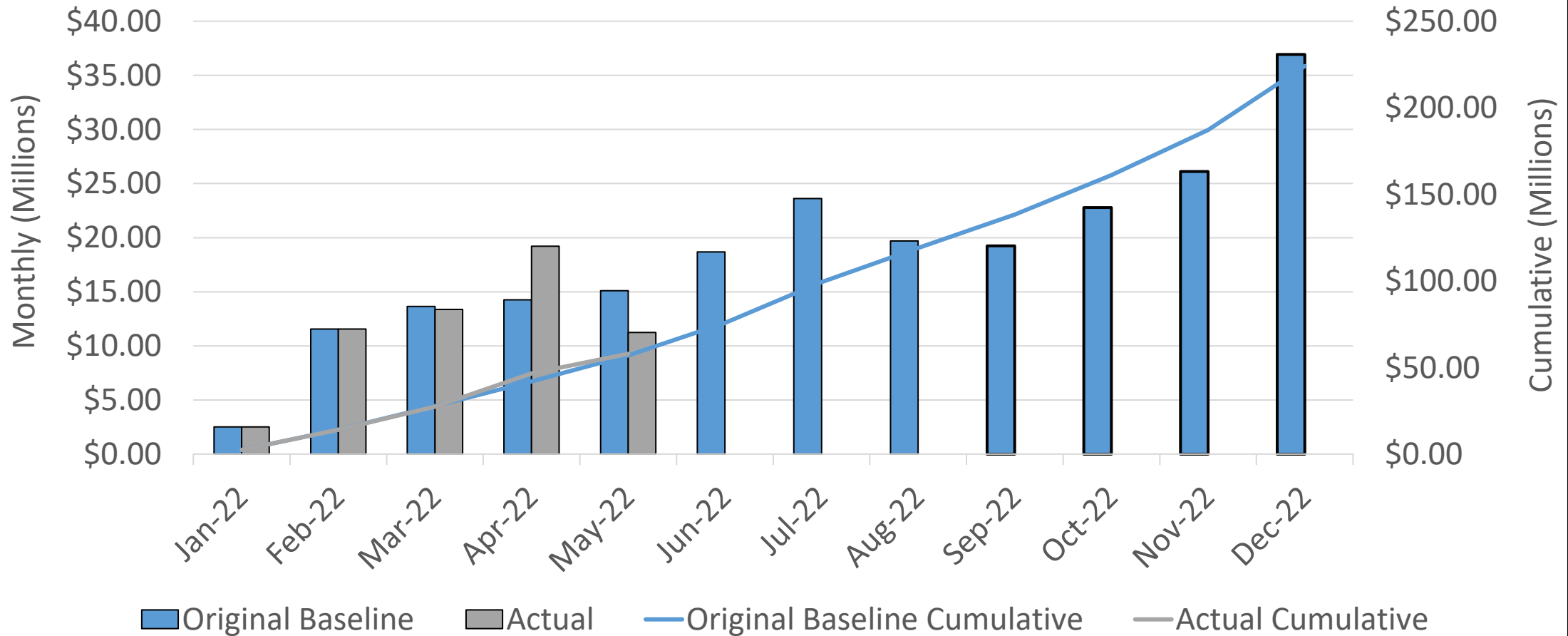


# Capital



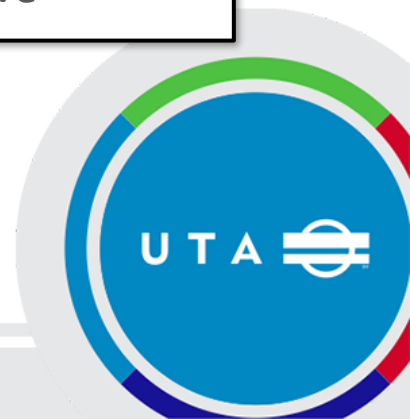
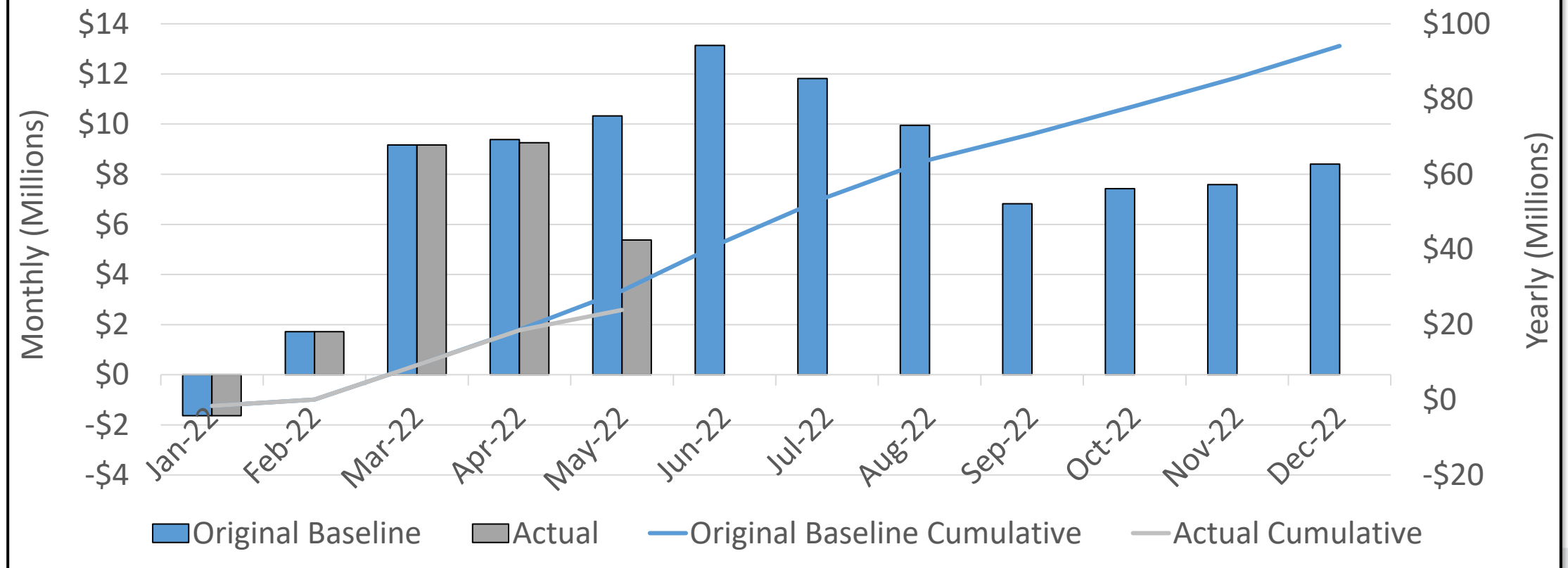
# Program Summary

2022 Capital Spending Program Summary- Total Spent \$57.2M of Planned \$56.6M, 1%



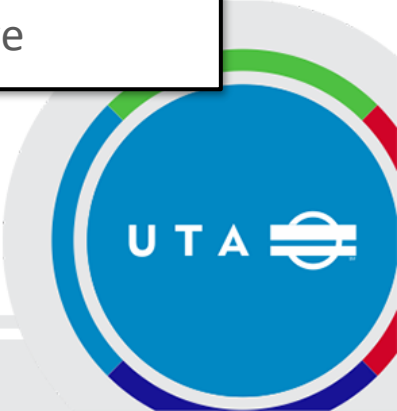
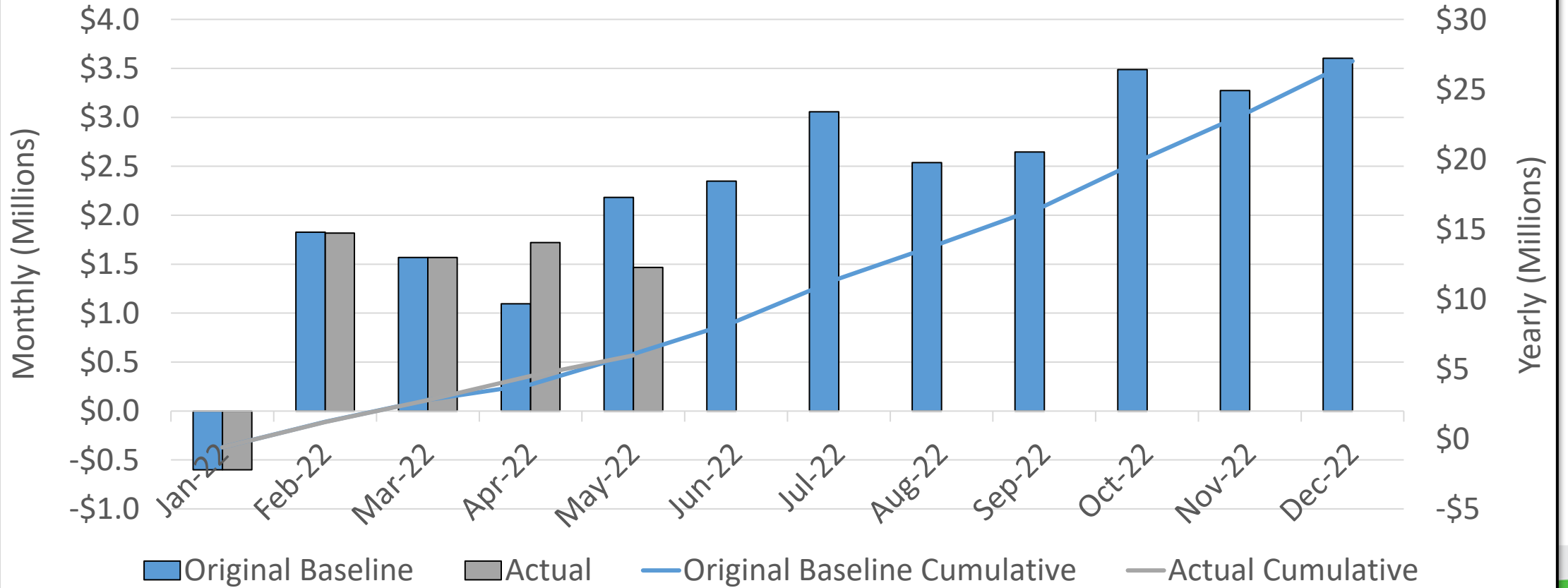
# Capital Construction

Capital Construction- Total Spent \$23.9M of Planned \$28.97M, -18%

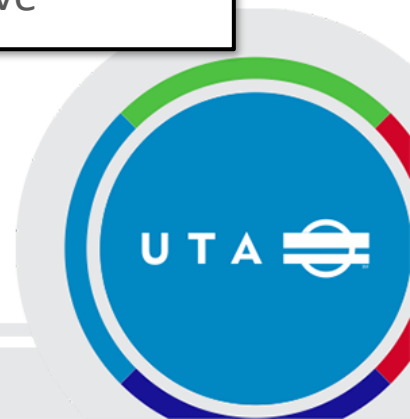
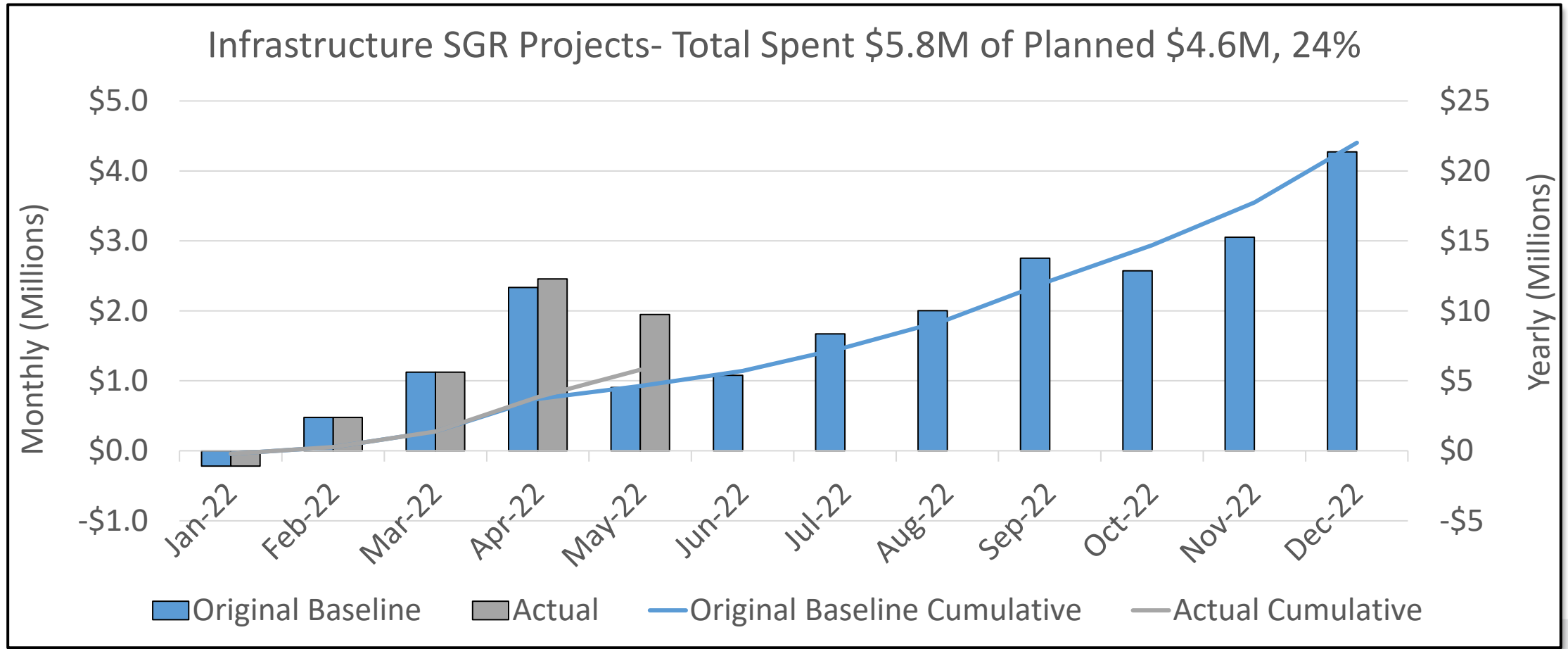


# Capital Development

Capital Development- Total Spent \$5.98 M of Planned \$6.1M, -1%

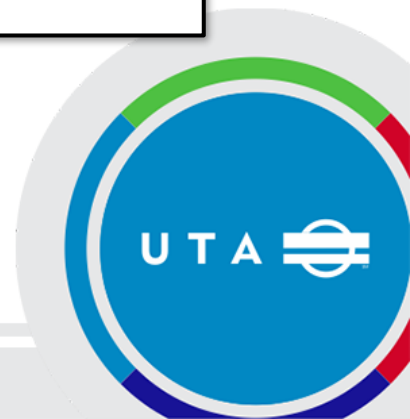
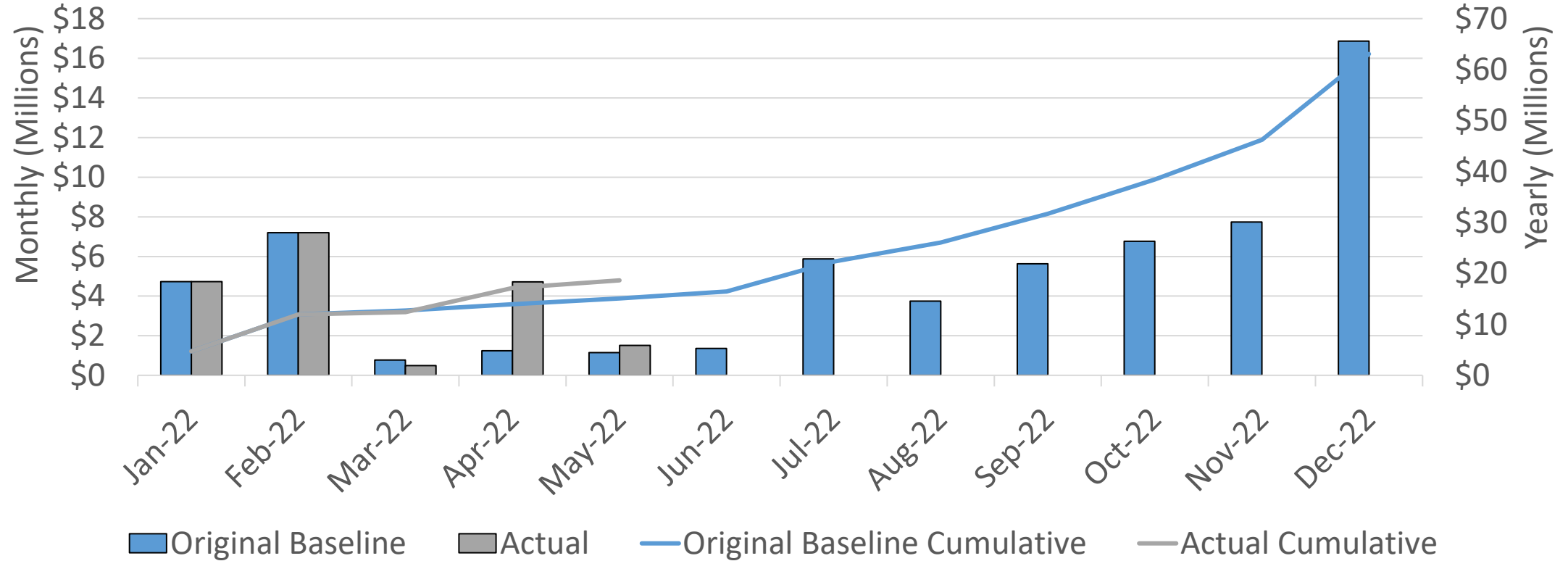


# Infrastructure SGR Projects



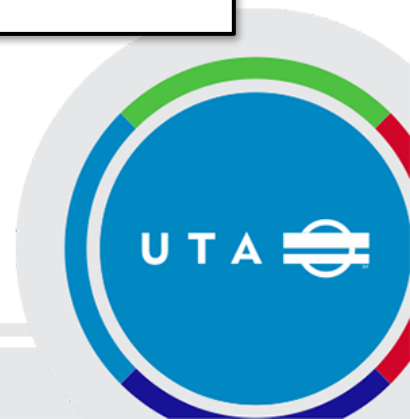
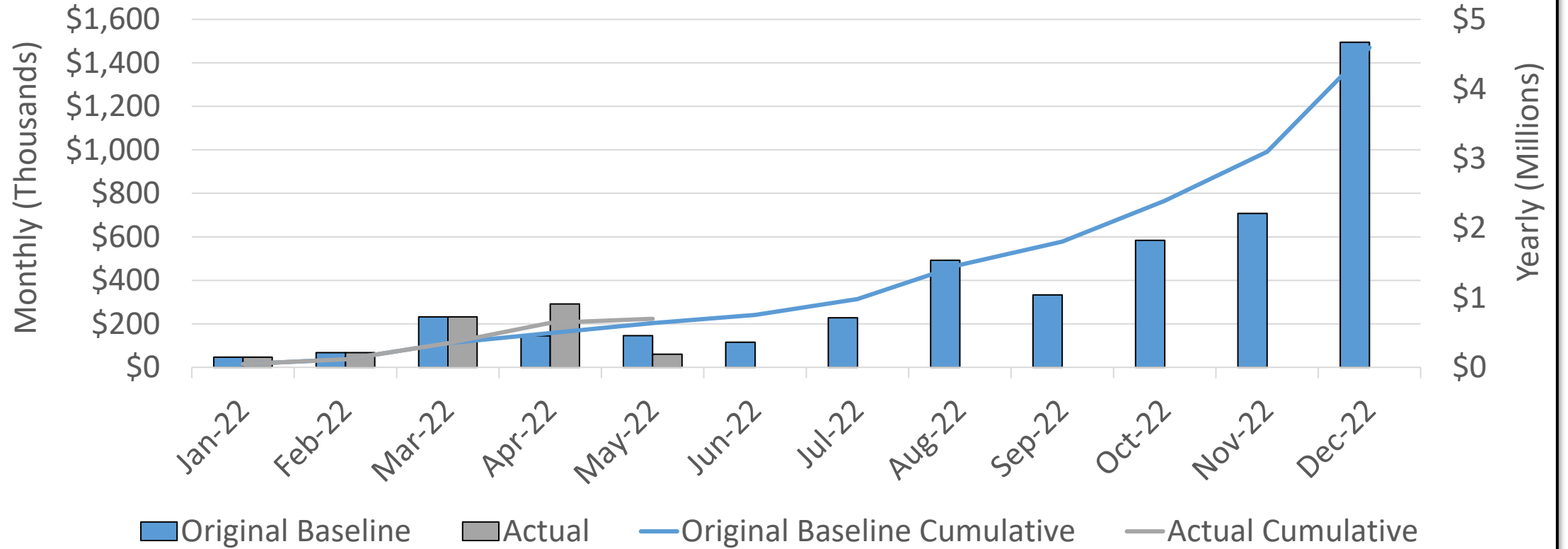
# Revenue/Service Vehicles

Revenue/Service Vehicles- Total Spent \$18.7M of Planned \$15.1, 24%

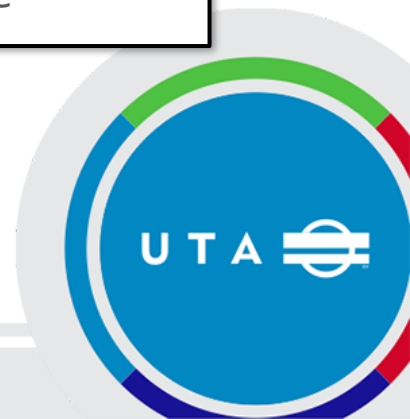
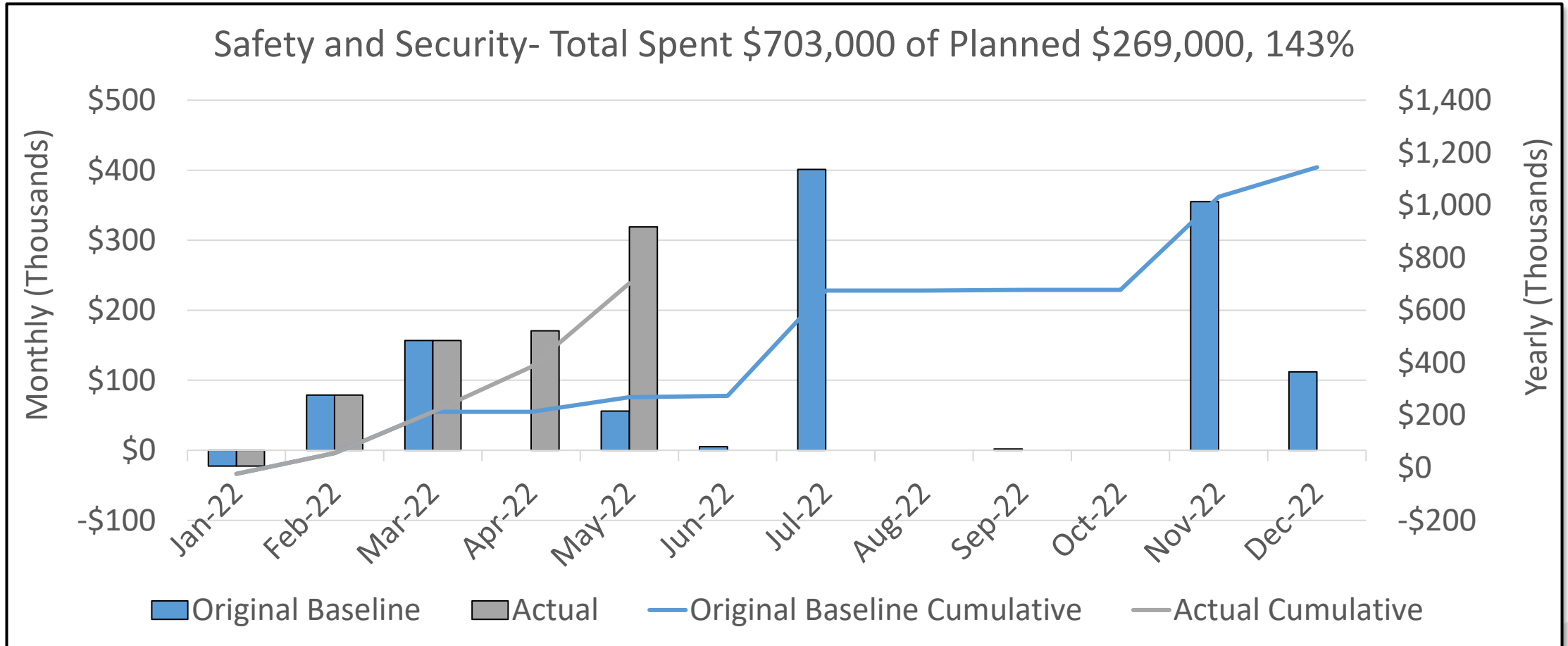


# Facilities- SGR

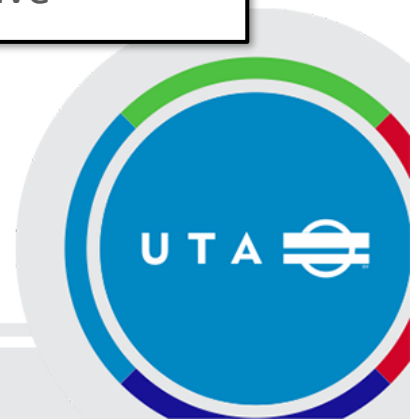
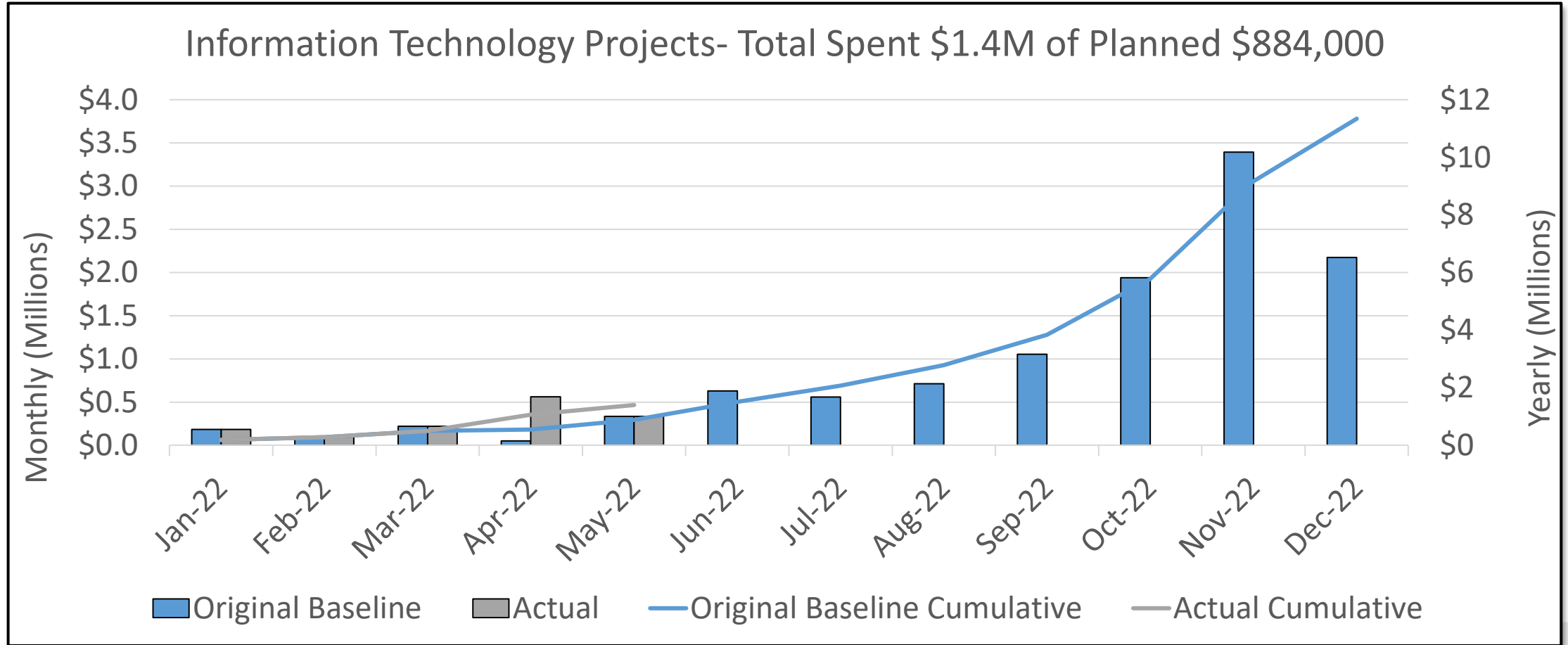
Facilities- SGR- Total Spent \$700,000 spent of planned \$638,000, 10%



# Safety and Security

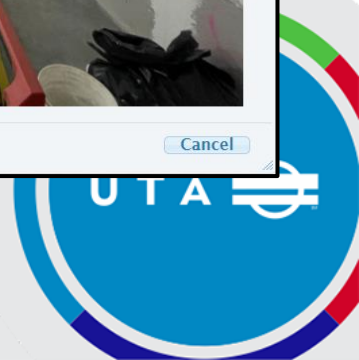
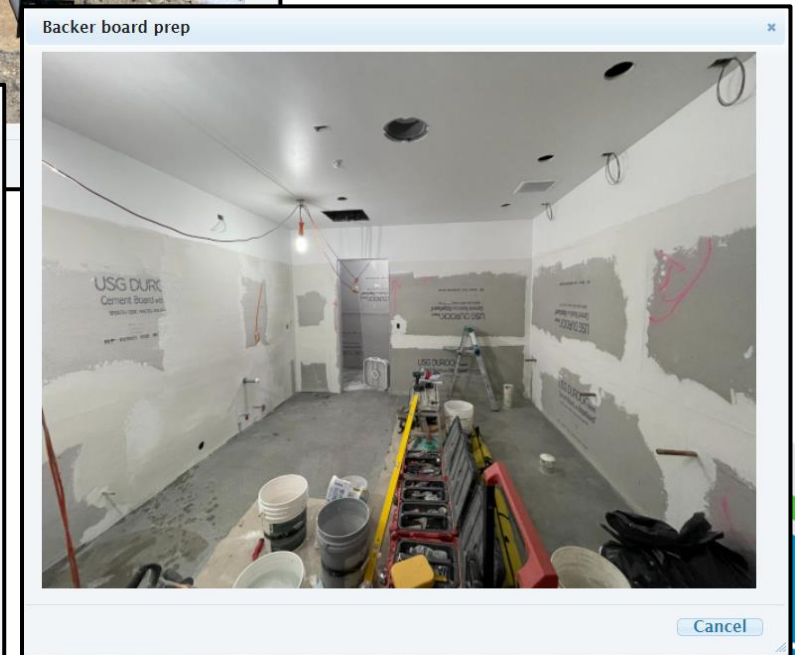
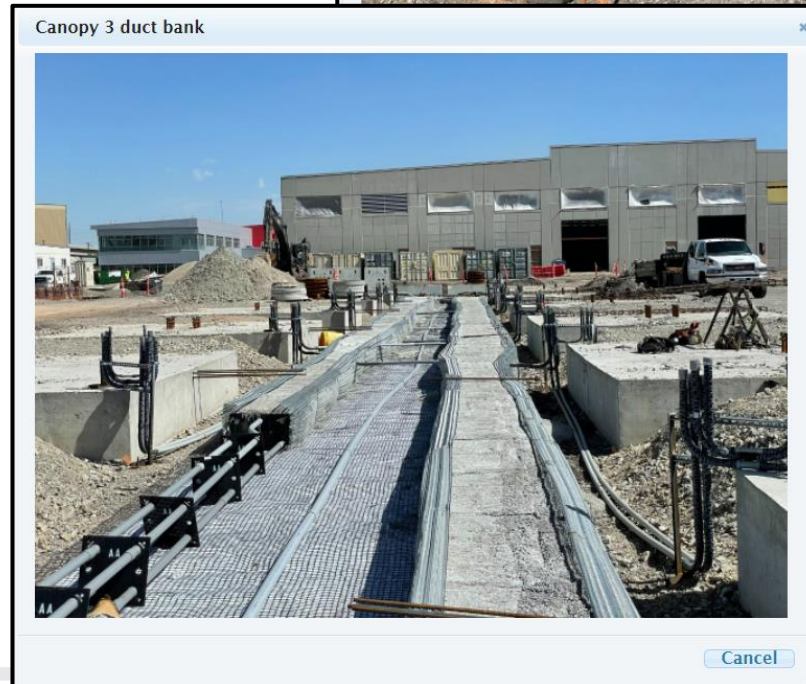


# Information Technology Projects



# MSP102- Depot District

- Interior work is progressing
  - Concrete sealant occurring
  - Plumbing fixtures being installed in one area
- Outside utility work occurring



# Questions?

