

Capital Program Update Preliminary January – December 2023

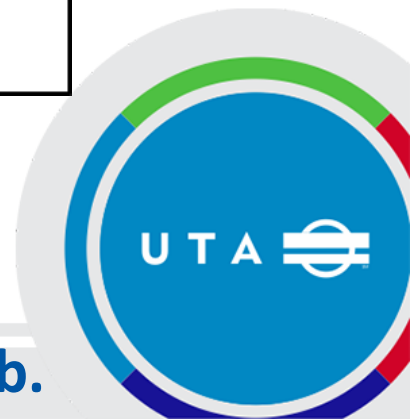
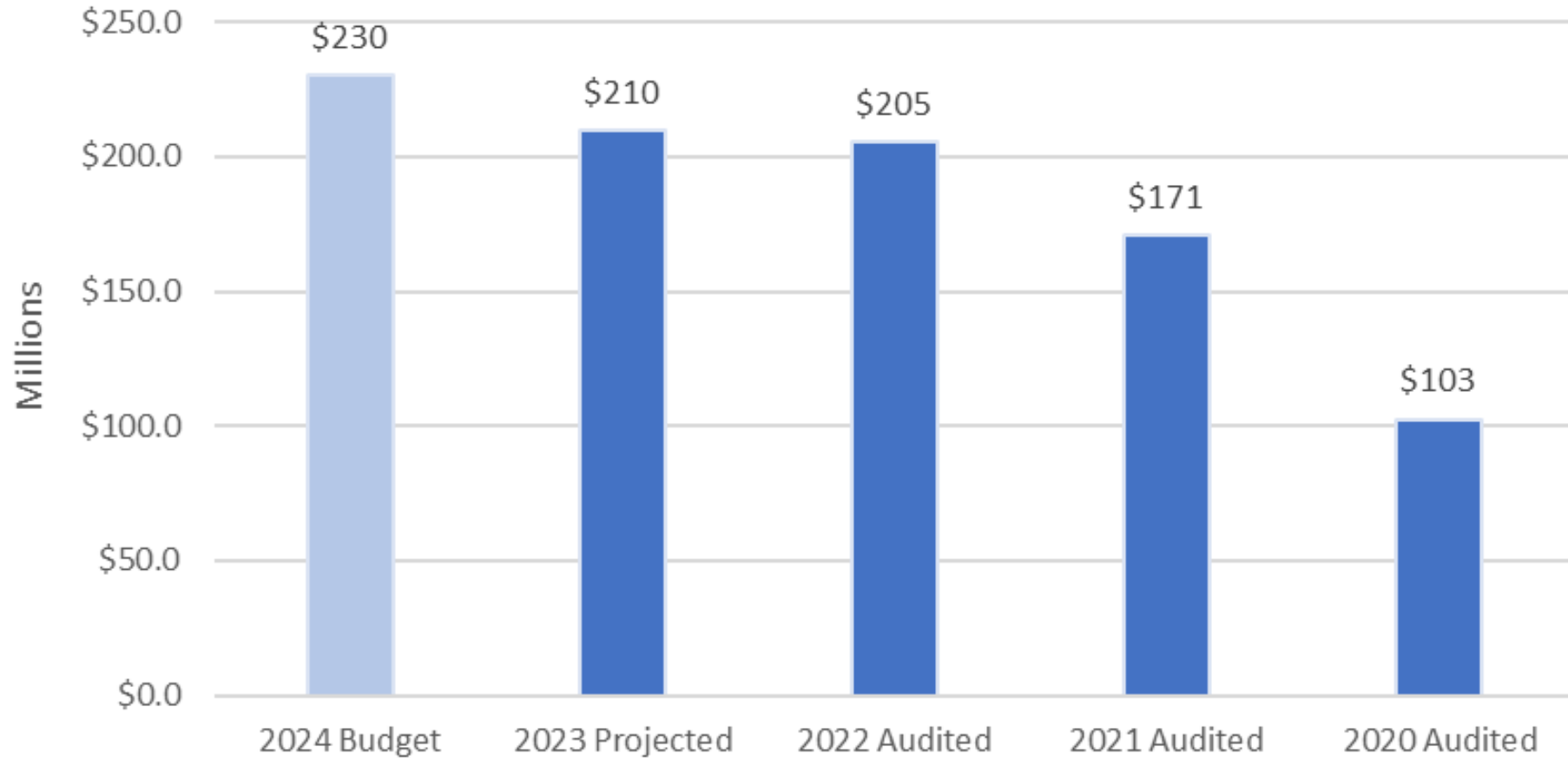
March 13, 2024



Follow Up to last Capital Presentation

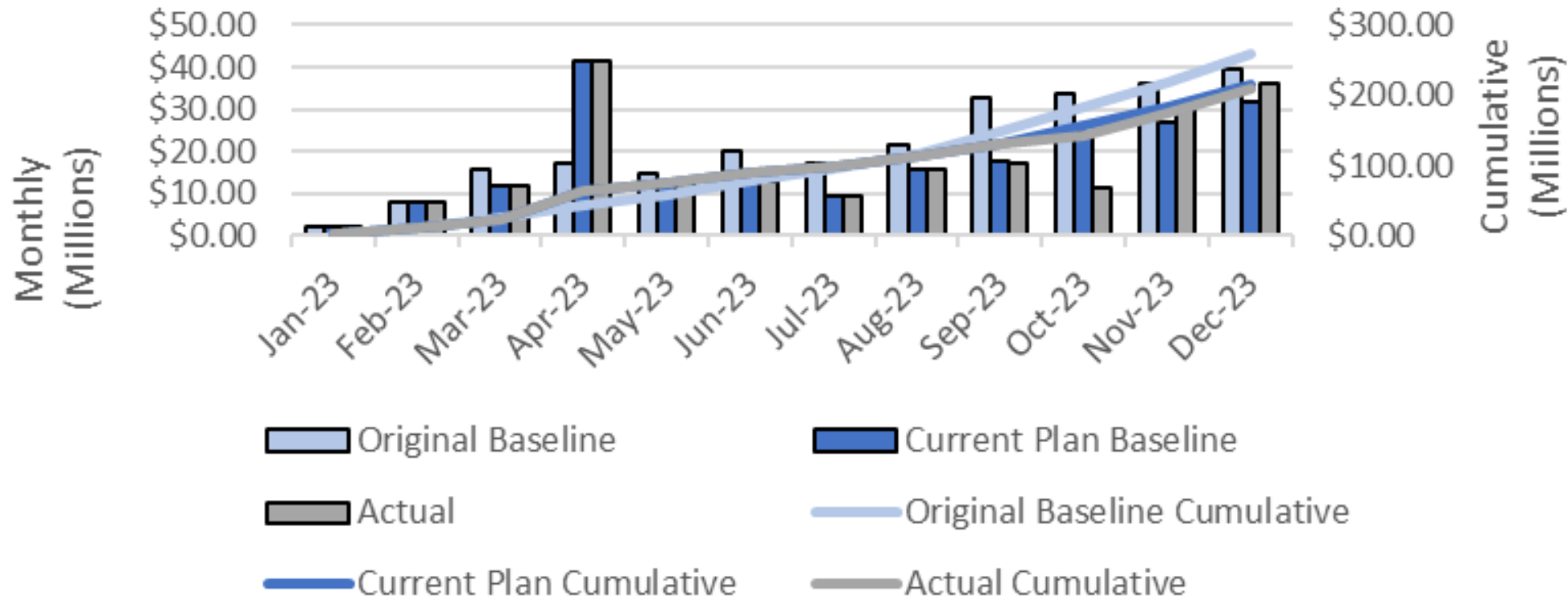


5 Year Capital Expense Summary



Preliminary Program Summary

2023 Capital Spending Program Summary- \$209.9 M Spent of Planned \$214.9 M, 2%



REV233 – Commuter Rail Vehicle Procurement – Used

Project Objectives

- Procure Five North County Transit District (NCTD) Bilevel coach cars.
- Perform overhauls/upgrades on these vehicles to ensure reliability and compatibility with current commuter rail fleet.

Current Accomplishment

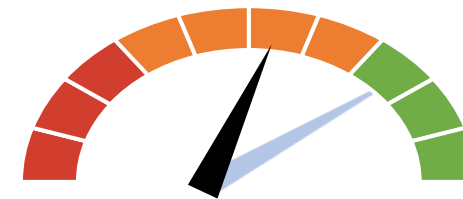
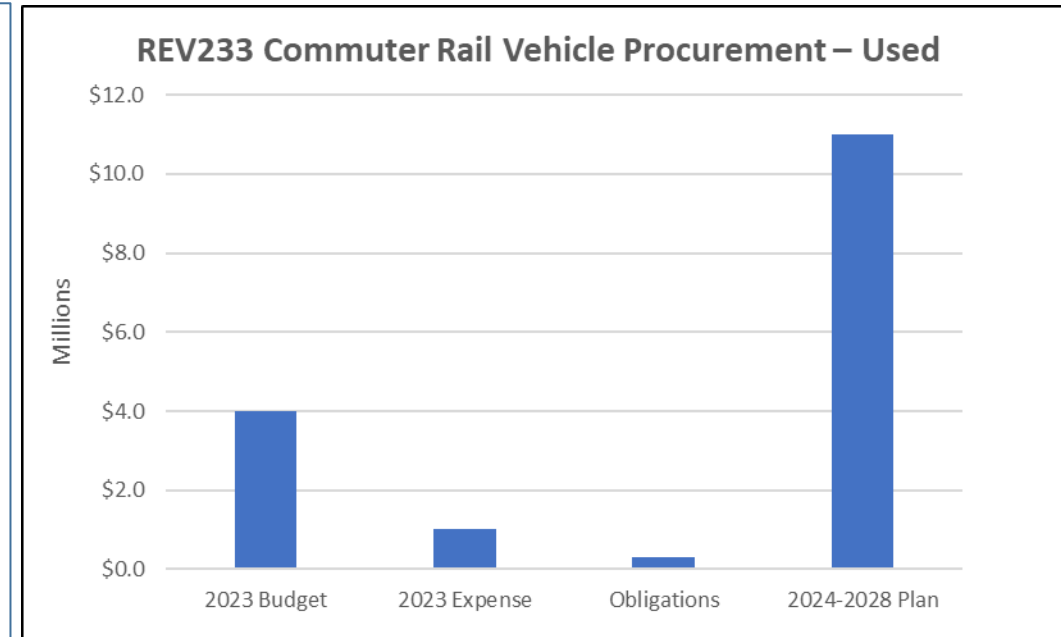
- Overhaul Technical Specification are being reviewed.
- Last Update from NCTD, receive vehicles by October 2024.

Next Steps

- Finalize Technical Specifications.
- Review and finalize General Conditions.
- Refine production schedule with contractor.

Challenges

- Further delays from NCTD on release of vehicles effect on Schedule.



Current Project Status

- Managed challenges/On schedule/Within budget





SGR391 – Commuter Rail Vehicle Rehab and Replacement

Project Objectives

- State of Good Repair to maintain reliability and safety of the Commuter Rail vehicles.
- Address obsolescence issues.

Current Accomplishment

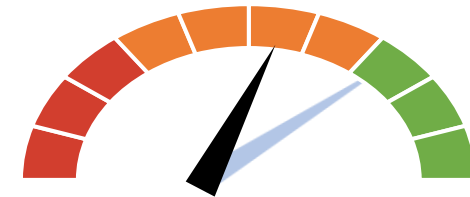
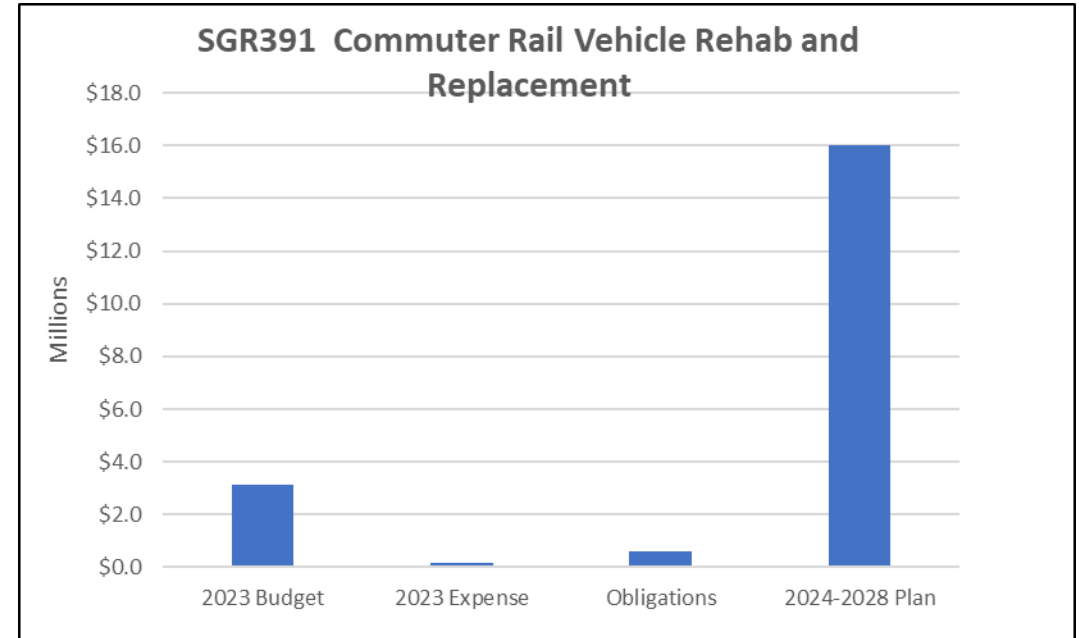
- Four Locomotive truck frames overhauled bringing total to 16 of 32.

Next Steps

- Working with Fleet Engineering and Commuter Rail Operations.
 - Prioritize projects.
 - Develop the scope Bilevel vehicles.
- Refine production schedule with contractor.

Challenges

- Closure of MPI's Boise location.



Current Project Status

- Managed challenges/On schedule/Within budget



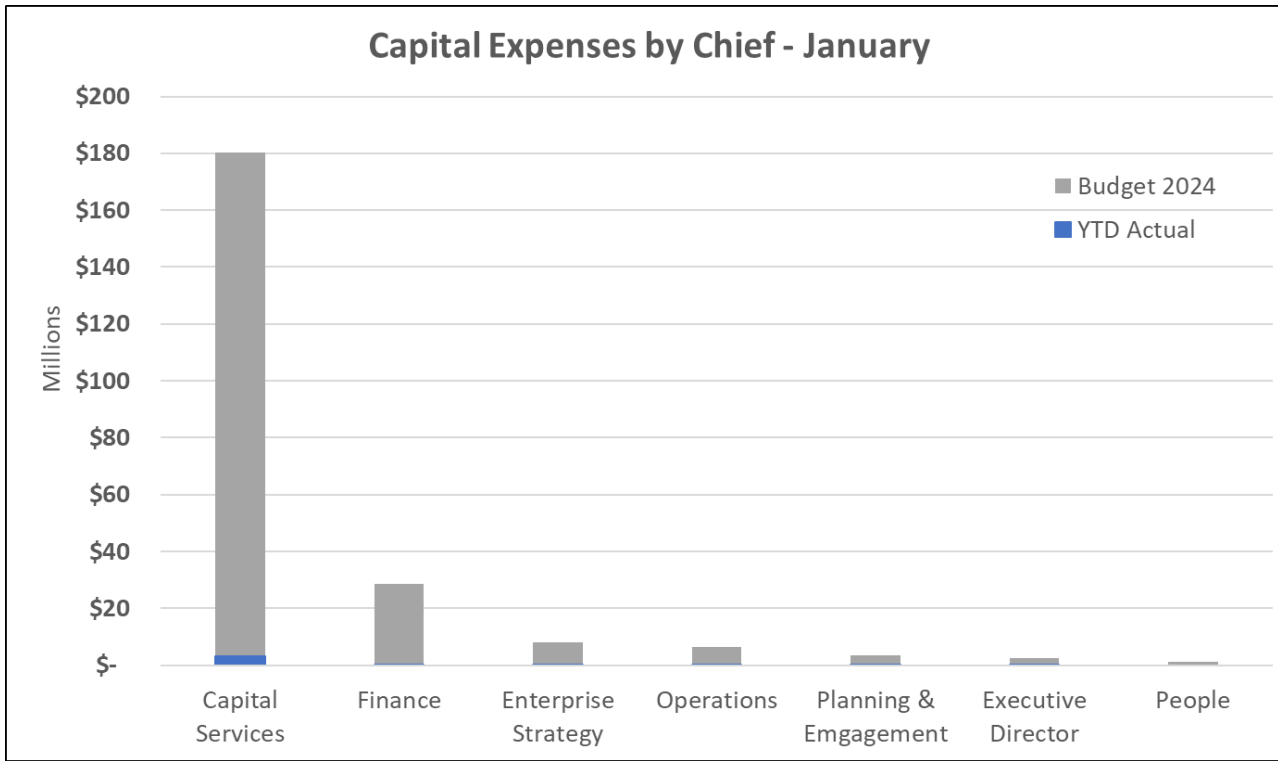


Capital Program Update January 2024

March 13, 2024



Agenda Item 6.b.



	Project			Percent
	January 2024	Count	Budget 2024	Budget Spent
Capital Services	84	\$ 180,438,000	\$ 3,170,063	1.8%
Finance	29	28,535,000	74,668	0.3%
Enterprise Strategy	21	8,050,000	277,589	3.4%
Operations	13	6,277,000	264,961	4.2%
Planning & Emgagement	0	3,555,000	6,015	0.2%
Executive Director	6	2,448,000	8,529	0.3%
People	3	1,130,000	-	0.0%
Grand Total	156	\$ 230,433,000	\$ 3,801,825	1.6%



Questions

