

# Station Area Plans

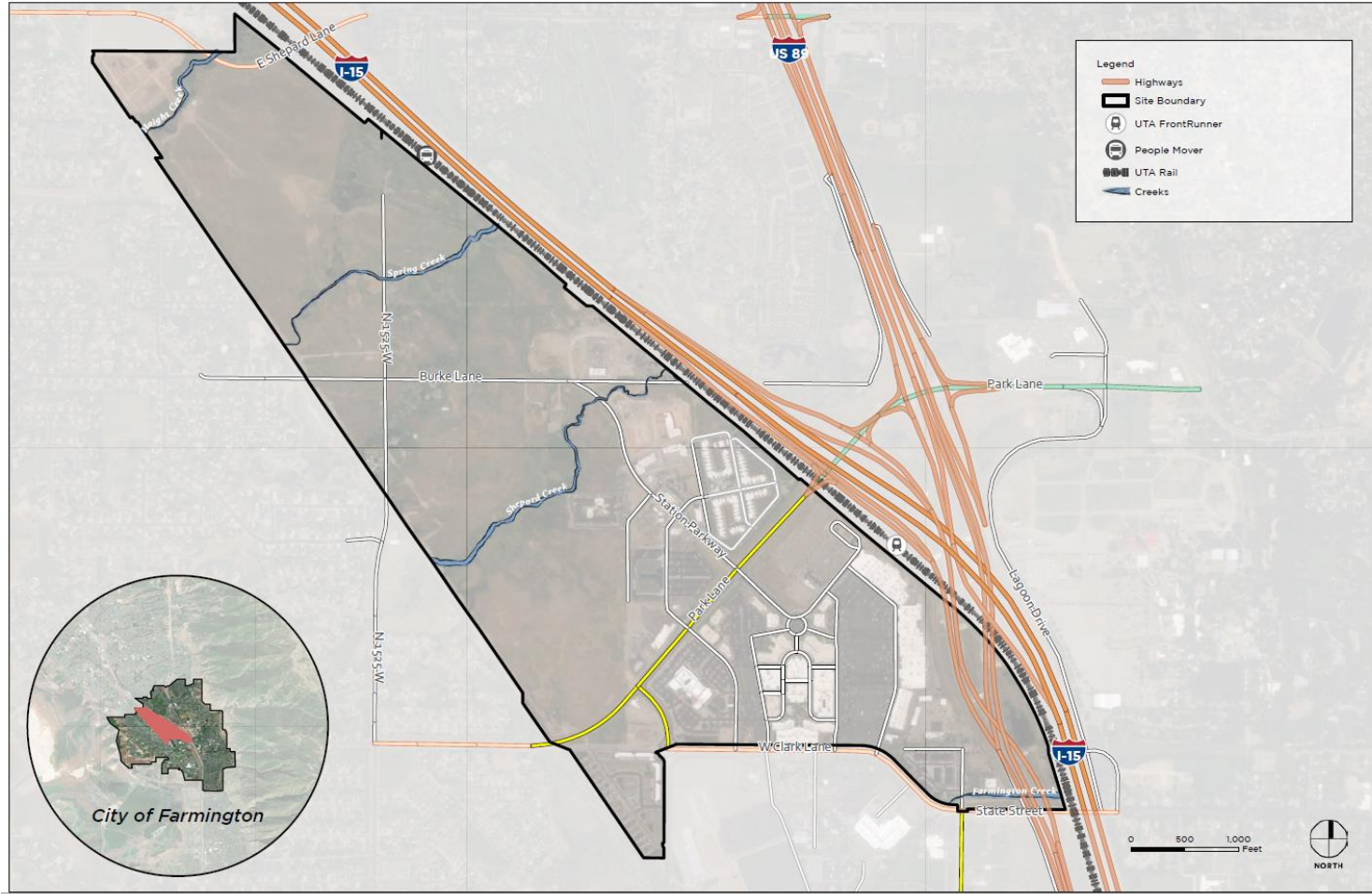
- Farmington FrontRunner
- 1300 South TRAX (Ballpark)
- Lehi FrontRunner



# Farmington Frontrunner



# Farmington Frontrunner – Plan Area



- 550 Acres
- Plan Area initially intended as a small area plan for properties north of Park Lane
- Southern portion added during the process to better understand station access





# Farmington Frontrunner – UTA Property

- 8.6 Acres
- Currently being used as a park & ride facility (853 stalls)

**Recommendation:**

- Relocate 264 park & ride stalls into a transit-oriented development



# Ballpark TRAX

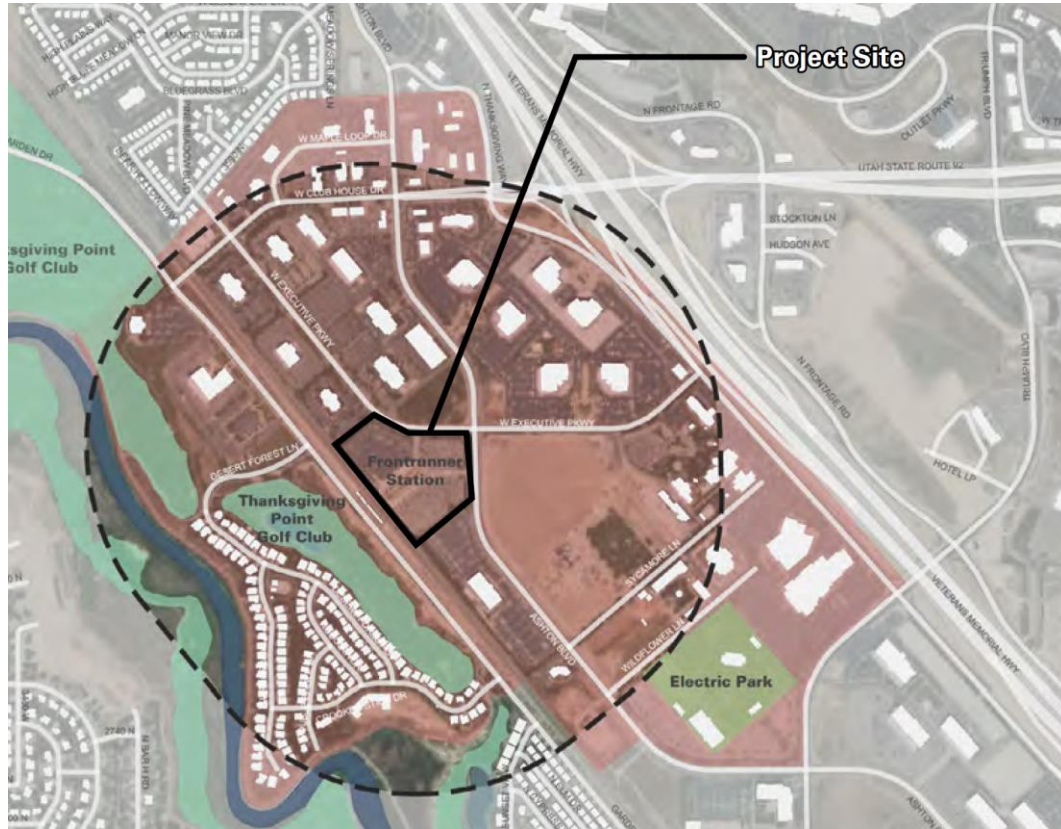
UTAH TRANSIT AUTHORITY



# Lehi Frontrunner



# Lehi Frontrunner – Plan Area



- Approx ½ mi from Lehi Frontrunner Station
- Includes much of Thanksgiving Point
- Collaborative effort with local development interests

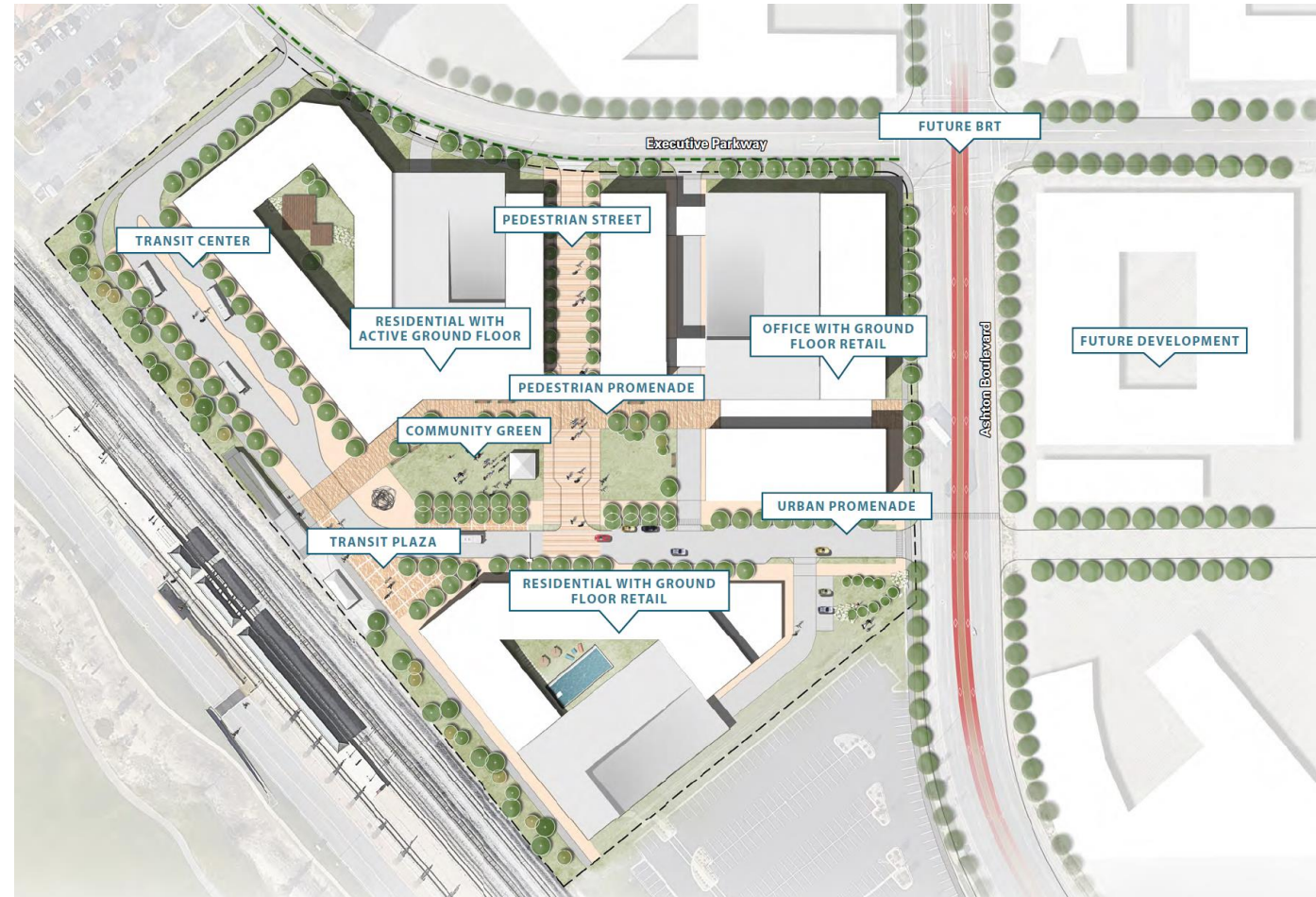


# Lehi Frontrunner – UTA Property

- 11 Acres
- Currently being used as a park & ride facility

## Recommendation:

- Relocate 300 park & ride stalls into transit-oriented development
- Reconfigure bus loop to allow integration of future BRT route
- 200 Affordable Units
- 270,000 SF Office
- 47,000 SF Retail



# Questions & Comments

