

**AR2023-02-02 – Resolution
Approving and Recommending
Adoption of the Station Area Plan
for Farmington Utah**

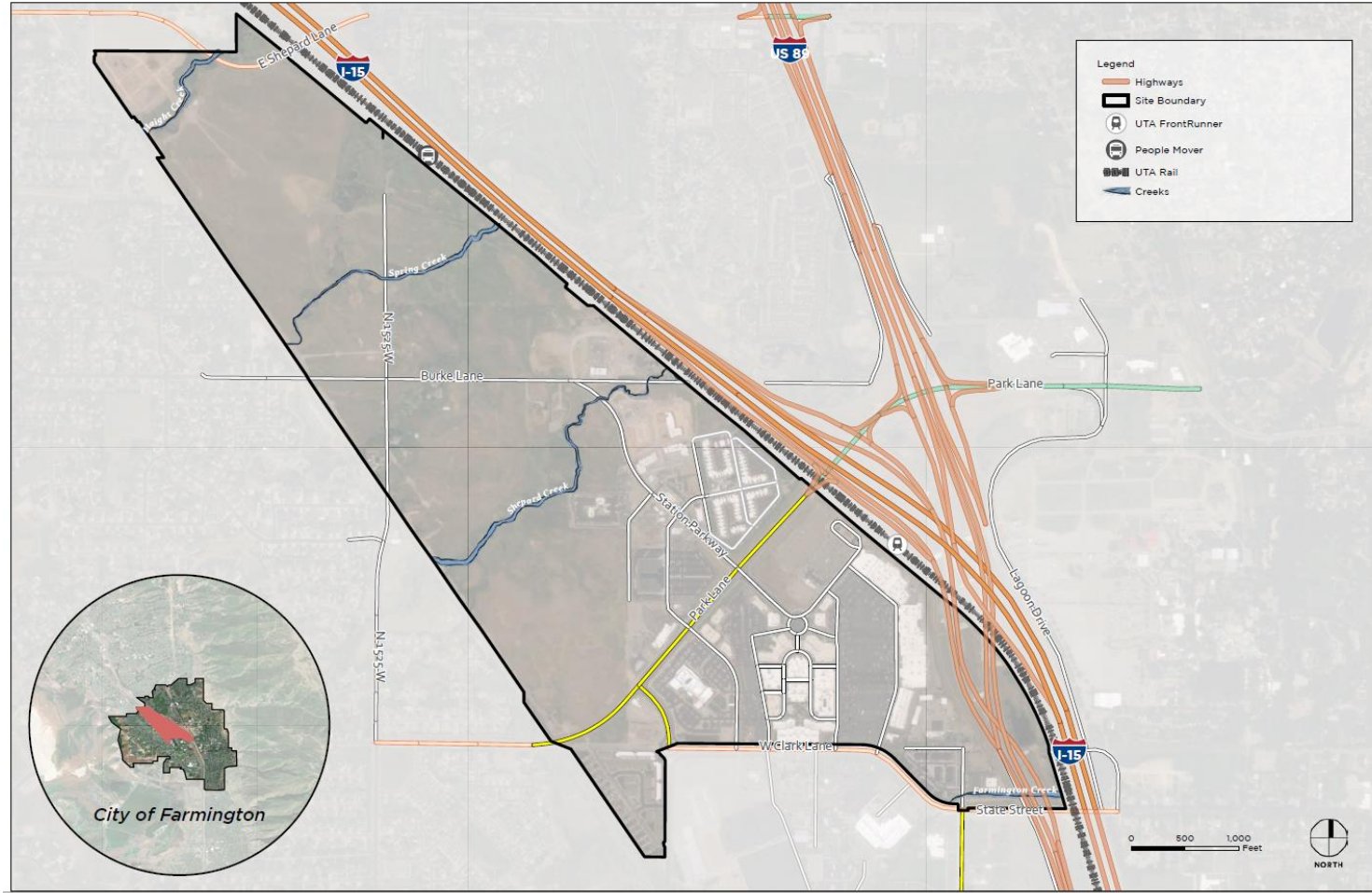


Farmington Station Area Plan

- **Funded by Wasatch Front Regional Council (WFRC), through the Transportation Land Use Connection (TLC) Program**
- **Plan adopted by Farmington City and certified by WFRC in Q4 of 2022**



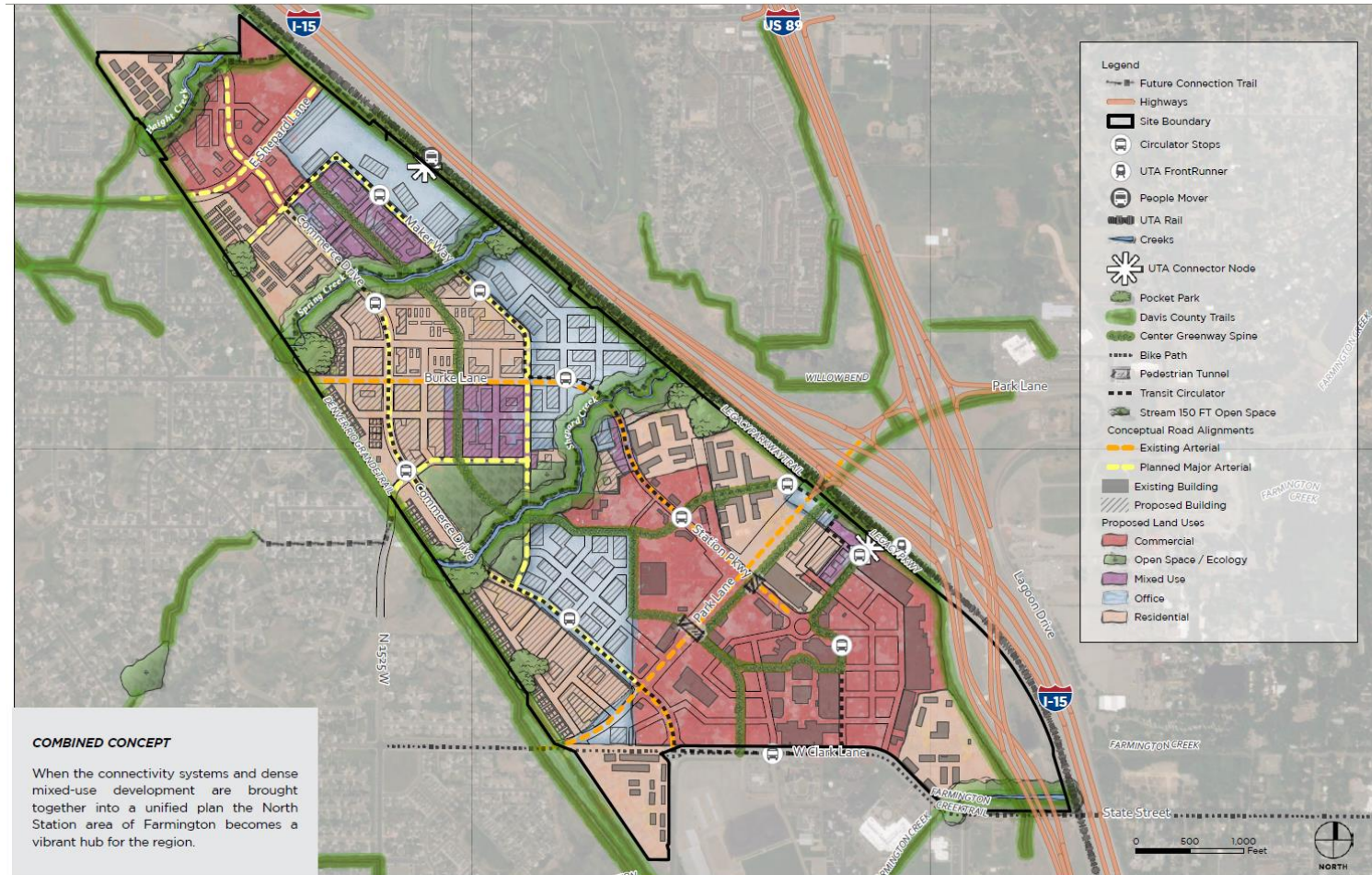
Farmington Station – Plan Area



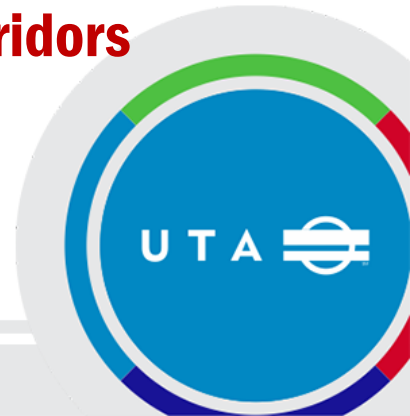
- **550 Acres**
- **Initially intended as a small area plan for properties north of Park Lane**
- **Southern portion added to better understand and improve station access**



Farmington Station – Plan Overview



- Well-connected grid of streets, trails, and bike paths
- Mix of Residential, Office, Retail, and Open Space
- UTA Connector nodes
- Preservation of natural riparian corridors



Farmington Station – UTA Property

- **8.6 Acres**
- **Current Use:**
Park & Ride lot (853 stalls)

Recommendation:

- **264 park & ride stalls**
(match pre-pandemic demand)
- **Mixed-Use, Residential, Commercial land uses:**
 - **Office: 150,000 sf**
 - **Retail: 36,000 sf**
 - **Residential: 330 units**



Questions & Comments

